



@WFP/Jessica Lawson

### Highlights

o In September, the national average price of WFP's standard reference food basket reached its highest ever recorded level since monitoring started (2013), increasing by seven percent between August and September 2021 and reaching SYP 186,319 (USD 75 at the official exchange rate of SYP 2,500/USD).

o In Dar'a Al-Balad, the average food basket price reached SYP 225,169 in September 2021, marking an increase of 18 percent from the level recorded in July 2021 (pre-escalation of hostilities in Dar'a Al-Balad).

o The informal national average price of transport diesel and one butane gas cylinder (25,000 L) increased respectively by 22 and 48 percent in September compared to August 2021, reaching SYP 2,796/litre and SYP 73,482/refill respectively.

o In September 2021, the Syrian pound's informal exchange rate weakened by two percent, reaching SYP 3,443/USD. Compared to September 2020, the informal Syrian pound exchange rate has depreciated by 36 percent and by 82 percent compared to October 2019 (start of Lebanese financial crises).

o For further information, please contact:

Jan Michiels at  
Jan.Michiels@wfp.org

Abdelrahman Hamza at  
Abdelrahman.Hamza@wfp.org

### Standard Food Basket

In September 2021, the national average price of a standard reference food basket<sup>1</sup> increased by seven percent since August 2021, reaching SYP 186,319. The national average food basket price was three percent higher than that of March 2021 (six months ago) and 123 percent higher compared to September 2020 (Figure 1). September marked the highest ever recorded monthly average reference food basket price, up by three percent from the previous record reached in March 2021 (SYP 180,792).

The increase in the food basket price is mainly attributed to the ongoing fuel shortage countrywide, the continued increase in the price of informal diesel and the increase in the informal SYP/USD exchange rate that are contributing to the price increase of many food-items.

M-o-m, all 14 governorates recorded an increasing average reference food basket price in September 2021. The highest m-o-m increase of 16 percent was reported in Idlib reaching SYP 227,811, while the lowest m-o-m increase of two percent was reported in Rural Damascus and Deir-ez-Zor reaching SYP 181,340 and SYP 165,312 respectively.

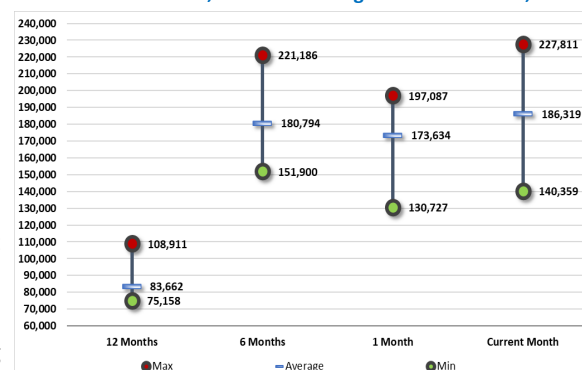
Year-on-year (y-o-y), the price of the reference food basket has significantly increased across all 14 governorates. Aleppo recorded the highest increase (up 141 percent) while Al-Hasakeh recorded the lowest increase (up 76 percent).

The gap between the highest and lowest average food basket prices increased by 32 percent from SYP 66,360 in August 2021 to SYP 87,452 in September 2021 and by 159 percent since September 2020 (Chart 1).

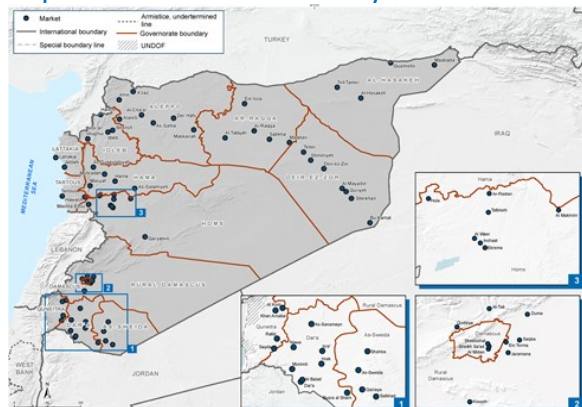
Figure 1: Food basket cost and changes, SYP

Governorate	Price September 2021	1 month change	6 months changes	12 months changes
Aleppo	SYP 195,078	13%	3%	141%
Damascus	SYP 184,489	4%	13%	134%
Dar'a	SYP 195,260	10%	11%	129%
Deir-ez-Zor	SYP 165,312	2%	4%	120%
Hama	SYP 191,613	8%	2%	133%
Al-Hasakeh	SYP 140,359	7%	-8%	76%
Homs	SYP 183,436	4%	-2%	124%
Idlib	SYP 227,811	16%	3%	165%
Lattakia	SYP 195,635	10%	0%	129%
Ar-Raqqa	SYP 191,857	7%	9%	141%
Rural Damascus	SYP 181,340	2%	9%	124%
As-Sweida	SYP 181,934	7%	3%	115%
Tartous	SYP 182,267	7%	-8%	118%
Quneitra	SYP 192,071	5%	5%	124%
Average	SYP 186,319	7%	3%	123%

Chart 1: National min., max. and average food basket cost, SYP



Map 1: Location of markets monitored by WFP



1. The standard food basket is a group of essential food commodities. In Syria, the food basket is set at a group of dry goods providing 2,060 kcal a day for a family of five during a month. The basket includes 37 kg bread, 19 kg rice, 19 kg lentils, 5 kg of sugar, and 7 litres of vegetable oil.

# Special Focus: Dar'a Al-Balad, Dar'a Governorate

## Overview

On 28 July, heavy shelling and intensified ground clashes were reported in Dar'a Al-Balad neighbourhood in Dar'a governorate in southern Syria<sup>2</sup>. Dar'a Al-Balad has an estimated population of around 55,000 people and due to the ongoing hostilities, more than 36,424 civilians were reportedly displaced. Additionally, Sijneh and Saraya crossing points, main humanitarian corridors between Dar'a Al Balad and Dar'a city, were closed during most of August; however, they were reportedly re-opened on 6 September 2021.

Access to services and goods within Dar'a Al-Balad was extremely challenging, with critical shortages of electricity, fuel and bread. As a result of the continued insecurity, delivery of wheat flour to two bakeries (Tishreen and Al-Balad) had been delayed, and thus Al-Balad bakery was functioning at sub-optimal levels and relying on wheat flour stocks provided by the local community. Moreover, security incidents in southern Syria, specifically in Dar'a Al-Balad, have threatened agricultural operations and affected the smooth movement of agriculture inputs and commodities, preventing farmers from conducting agriculture activities as the surrounding fields became inaccessible<sup>3</sup>.

Following the 9 September ceasefire agreement between the Government of Syria and the Dar'a Central Committee, the security situation in Dar'a Al-Balad has somewhat stabilized and most public services have reportedly resumed since hostilities ceased. Nonetheless, the disruption to the food supply chain during the ongoing hostilities has further affected the price of essential food items in the local markets. In September 2021, the average price of WFP's standard reference food basket in Dar'a Al-Balad reached SYP 225,169 (USD 90 at the official exchange rate of SYP 2,500/USD), thus exceeding the national average by 21 percent and the average price for Dar'a governorate by 15 percent. This incident illustrates the susceptibility of local markets to shocks such as escalation of hostilities and supply chain disruptions.

## Food-items prices\*

In September 2021, the retail price of all cereals increased in Dar'a Al-Balad. Between July and September 2021, the average price of bulgur increased by eight percent, reaching SYP 2,450/kg. The price of Egyptian white rice increased by six percent, reaching SYP 4,022/kg, and that of wheat flour increased by five percent, reaching SYP 2,317kg (Chart 2). Y-o-y, cereal prices have dramatically increased by 137 percent for bulgur, 119 percent for Egyptian white rice and by 132 percent for wheat flour.

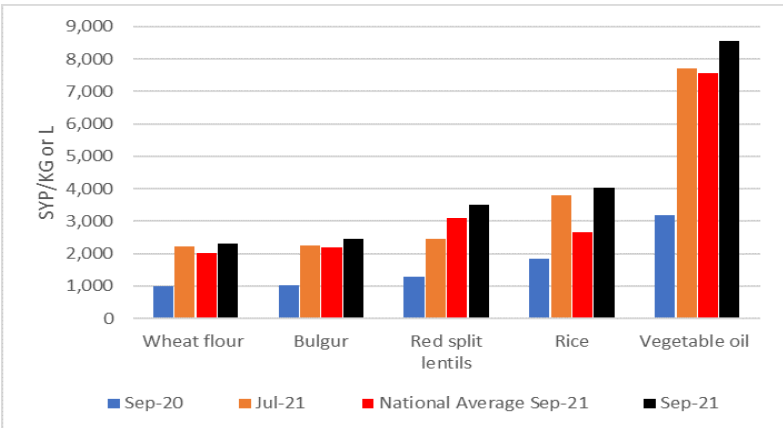
The price of meat products also increased. Between July and September 2021, the average price of a whole clean chicken soared by 40 percent reaching SYP 9,400/kg, and the average price of a carton of eggs increased by seven percent reaching SYP 9,500/30 pieces (Chart 3). Y-o-y, the average price of protein products have significantly increased by 83 percent for a whole cleaned chicken and by 116 percent for eggs. Other main food-items prices like vegetable oil, bread bakery and red split lentils also increased between July and September 2021 by 11, 33 and 43 percent reaching SYP 8,567/litre, SYP 253/bundle and SYP 3,500/kg, respectively. Y-o-y, prices have skyrocketed by 169 percent for vegetable oil, 497 percent for bakery bread and by 169 percent for red split lentils.

Comparing food-items prices in Dar'a Al-Balad to the national average prices in September, Dar'a Al-Balad prices were higher than the national average prices by 51 percent for Egyptian white rice, by 27 percent for a whole cleaned chicken, by 14 percent for wheat flour, by 13 percent for vegetable oil, by 13 percent for red split lentils, and by 12 percent for bulgur.

## Fuel prices

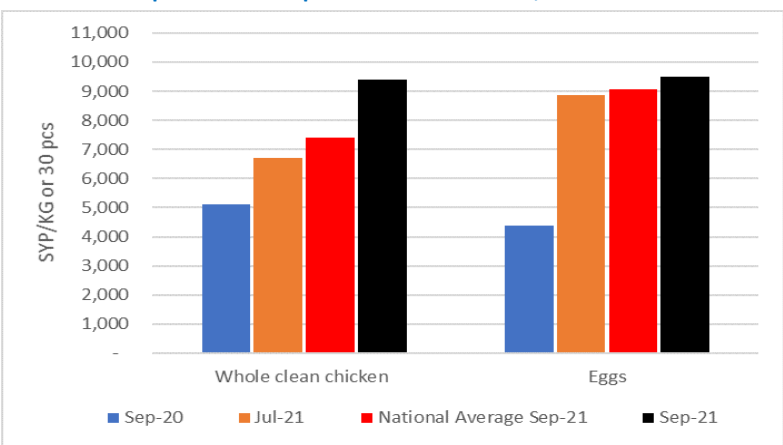
Moreover, between July and September 2021, the prices of informal diesel for transport and the informal butane gas cylinder in Dar'a Al-Balad increased by 23 and 25 percent, reaching SYP 3,300/litre and SYP 89,722/refill, respectively in September 2021. Even when comparing fuel prices in Dar'a Al-Balad to the national average prices, Dar'a Al-Balad's prices were higher than the national average prices by 18 percent for informal diesel for transport and by 22 percent for the informal butane gas cylinder.

Chart 2: Main food-items retail prices in Dar'a Al-Balad, SYP



Source: WFP

Chart 3: Meat products retail prices in Dar'a Al-Balad, SYP



Source: WFP

<sup>2</sup> Hostilities in Dar'a Governorate: [https://reliefweb.int/sites/reliefweb.int/files/resources/210823\\_OCHA%20Syria\\_Dar%27a%20Flash%20Update-3\\_FINAL.pdf](https://reliefweb.int/sites/reliefweb.int/files/resources/210823_OCHA%20Syria_Dar%27a%20Flash%20Update-3_FINAL.pdf)

<sup>3</sup> Agriculture input and commodity bulletin in August 2021: [https://fscluster.org/sites/default/files/documents/fao\\_agriculture\\_input\\_commodity\\_bulletin\\_aug21\\_0.pdf](https://fscluster.org/sites/default/files/documents/fao_agriculture_input_commodity_bulletin_aug21_0.pdf)

\* WFP did not manage to collect the food-items prices in Dar'a Al-Balad during August 2021, due to the escalation of hostilities.

**Legend on regions of analysis:** 'Northwest'=Aleppo; 'Cross-border'=Idlib & Aleppo [A'zaz, Atarib & Afrin]; 'Coastal'=Lattakia & Tartous; 'Northeast'=Ar-Raqqqa, Al-Hasakeh & Deir-ez-Zor; 'Middle'=Hama, Homs and Idlib [Senjar]; 'South'=Damascus, Rural Damascus, Dar'a, As-Sweida & Quneitra.

## Staple cereals retail prices

### Wheat Flour

M-o-m, the national average retail price of wheat flour throughout Syria increased by six percent in September 2021, reaching SYP 2,027/kg. The price of wheat flour has also increased by two percent compared to March 2021 and by 91 percent y-o-y. Tartous recorded the highest average wheat flour price in September at SYP 2,222/kg (up 15 percent m-o-m), while Idlib recorded the lowest average monthly price of SYP 1,718/kg (up 10 percent m-o-m).

Broken down by regions, Northwest Syria recorded the highest monthly average retail price at SYP 2,266/kg (up six percent m-o-m), followed by the Coastal region at SYP 2,171/kg (up 17 percent m-o-m). The Cross-border region recorded the lowest average retail price at SYP 1,745/kg (up nine percent m-o-m), followed by the Middle region at SYP 1,982/kg (up six percent m-o-m) - Chart 4.

### Rice

The national average retail price of Egyptian white rice increased by six percent compared to August 2021 and by 84 percent y-o-y, reaching SYP 2,670/kg in September 2021. Quneitra recorded the highest average price at SYP 3,152/kg (up six percent m-o-m), while Al-Hasakeh recorded the lowest average price at SYP 2,358/kg (up 10 percent m-o-m).

M-o-m, the Cross-border region recorded the highest average price at SYP 3,008/kg (up 10 percent m-o-m), followed by the Southern region at SYP 2,829/kg (up eight percent m-o-m). Northeast Syria recorded the lowest average Egyptian white rice price by region at SYP 2,454/kg (up seven percent m-o-m), followed by Northwest Syria at SYP 2,521/kg (up three percent m-o-m) - Chart 5.

### Bulgur

M-o-m, the national average retail price of bulgur increased by four percent at SYP 2,196/kg in September 2021, whereas y-o-y, the price of bulgur increased by 80 percent. Tartous recorded the highest bulgur average retail price at SYP 2,503/kg (up four percent m-o-m), while Idlib recorded the lowest average monthly price at SYP 1,789/kg (up seven percent m-o-m).

Syria's Middle region recorded the highest average bulgur price by region at SYP 2,410/kg (up three percent m-o-m), followed by the Coastal region at SYP 2,371/kg (up four percent m-o-m). The Cross-border region recorded the lowest average bulgur price at SYP 1,657/kg (up seven percent m-o-m), followed by Northeast Syria at SYP 2,012/kg (up seven percent m-o-m) - Chart 6.

### Bread\*\*

The national average price of subsidized bread in September 2021 remained unchanged m-o-m at SYP 237/bundle; it however witnessed an increase by 367 percent since September 2020.

The price of commercial bread increased by six percent m-o-m and by 106 percent y-o-y, reaching SYP 1,985/bundle. Lattakia recorded the highest average commercial bread price at SYP 2,576/bundle (up 11 percent m-o-m), while Al-Hasakeh recorded the lowest average price at SYP 1,421/bundle (up 37 percent m-o-m). Broken down by region, the southern region recorded the highest average price of SYP 2,015/bundle (up two percent m-o-m) followed by northwest Syria at 2,000/bundle (up one percent m-o-m), while northeast Syria recorded the lowest average price at SYP 1,222/bundle (unchanged m-o-m) - Chart 7.

Chart 4: Retail Prices of Wheat Flour, SYP

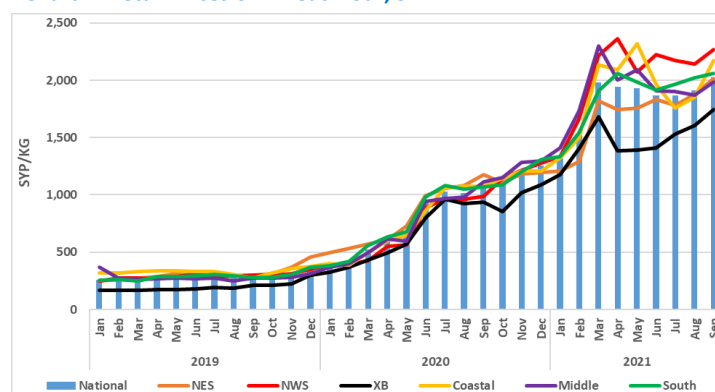


Chart 5: Retail Prices of Rice, SYP

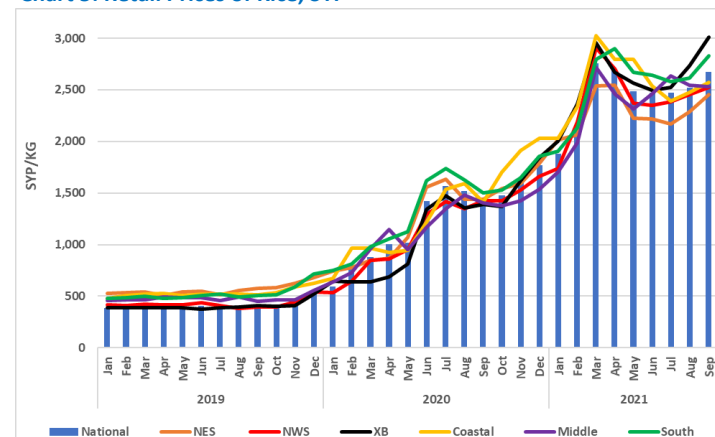


Chart 6: Retail Prices of Bulgur, SYP

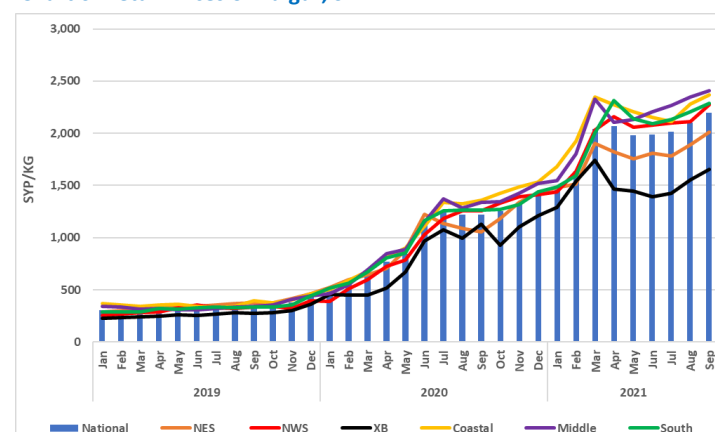
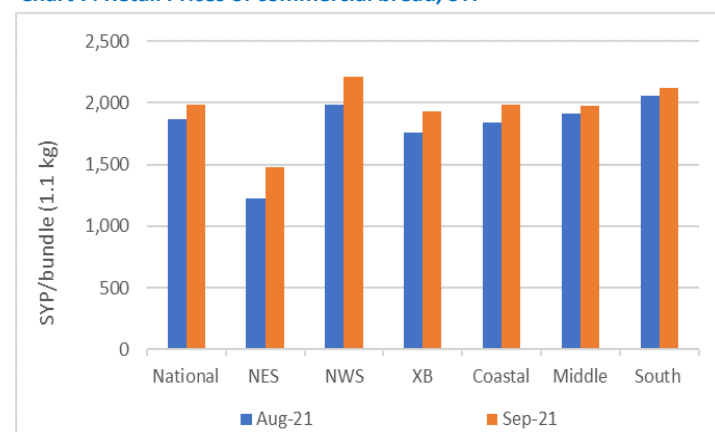


Chart 7: Retail Prices of commercial bread, SYP



Source: WFP Field Offices

\*\*Starting from March 2021, WFP-monitored commercial bread has been switched from resold public bread bundles to commercial bread sold at shops. Prices for the past year have been adjusted to include commercial bread resold from shops. Moreover, all prices have been adjusted to reflect bread bundle size of 1.1 kg instead of 1.3 kg since November 2020.

### Exchange rate\*\*\*

In September 2021, the informal SYP/USD exchange rate depreciated m-o-m by two percent, reaching SYP 3,443/USD. Moreover, compared to a year ago, the Syrian pound has depreciated by 36 percent.

The highest informal exchange rate was reported in Damascus and Rural Damascus at SYP 3,471/USD (depreciated by two percent m-o-m for each governorate), followed by Idleb at SYP 3,466/USD (depreciated by five percent m-o-m). The lowest average exchange rate in September was reported in Deir-ez-Zor at SYP 3,400/USD (depreciated by two percent m-o-m), followed by Tartous at SYP 3,425/USD (depreciated by two percent m-o-m) - Table 1.

The formal exchange rate and the UN operational rate have both remained unchanged m-o-m at SYP 2,500/USD.

### Diesel

In September 2021, the formal national average price of diesel increased by three percent compared to August 2021 and by 161 percent y-o-y, reaching SYP 455/litre.

Moreover, the informal national average price of transport diesel increased by 22 percent m-o-m and by 373 percent since September 2020 reaching SYP 2,796/litre. The informal price remains five times higher than the formal price (SYP 455/litre) - Chart 8. Tartous recorded the highest informal price at SYP 3,775/litre (up 33 percent m-o-m), while Al-Hasakeh recorded the lowest price at SYP 229/litre (unchanged m-o-m).

Broken down by regions, Northwest Syria recorded the highest average monthly price of informal transport diesel at SYP 3,416/litre (up 25 percent m-o-m), while Northeast Syria recorded the lowest average monthly price at SYP 1,024/litre (up 13 percent m-o-m) - Chart 8.

Moreover, the informal national average price of heating diesel has increased by 14 percent m-o-m, reaching SYP 2,813/litre. Broken down by regions, Northwest Syria recorded the highest average monthly price at SYP 3,950/litre (up 13 percent m-o-m), while Northeast Syria recorded the lowest average monthly price at SYP 1,250/litre (unchanged m-o-m).

### Butane gas prices

In September 2021, the formal butane gas cylinder price (25,000 litres) increased by nine percent m-o-m reaching SYP 4,504/refill. However, compared to September 2020, the price has increased by 62 percent.

Moreover, the informal national average price of one butane gas cylinder (25,000 litres) increased by 48 percent m-o-m, reaching SYP 73,482/refill in September 2021. The price also increased compared to September 2020 by 547 percent. Tartous recorded the highest monthly average price at SYP 170,694/refill (up 122 percent m-o-m), while Al-Hasakeh recorded the lowest average price at SYP 12,125/refill (up three percent m-o-m).

Broken down by regions, the Coastal region recorded the highest average informal butane gas refill price at SYP 108,875/refill (up 106 percent m-o-m), followed by the Middle region at SYP 97,876/refill (up 65 percent m-o-m). Northeast Syria recorded the lowest average monthly price at SYP 21,311/refill (down three percent m-o-m), followed by the Cross-border region at SYP 38,750/refill (up seven percent m-o-m) - Chart 9.

Table 1: Informal market exchange rate, 1 USD to SYP

Governorate	September 2021	% change (m-o-m)	% change (y-o-y)
Aleppo	3,442	-3%	-37%
Al-Hasakeh	3,438	-3%	-36%
Ar-Raqqa	3,439	-3%	-36%
As-Sweida	3,453	-2%	-36%
Damascus	3,471	-2%	-35%
Dar'a	3,453	-3%	-36%
Deir-ez-Zor	3,400	-2%	-34%
Hama	3,433	-1%	-36%
Homs	3,435	-1%	-36%
Idleb	3,466	-5%	-39%
Lattakia	3,438	-3%	-35%
Quneitra	3,436	-2%	-36%
Rural Damascus	3,471	-2%	-35%
Tartous	3,425	-2%	-35%
National average	3,443	-2%	-36%
Official rate	2,500	0%	-50%

Source: WFP field offices

Chart 8: Formal and informal transport diesel prices, SYP\*\*\*\*

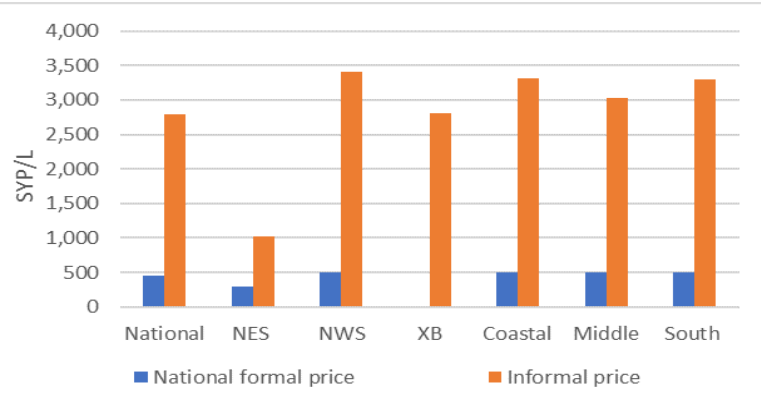
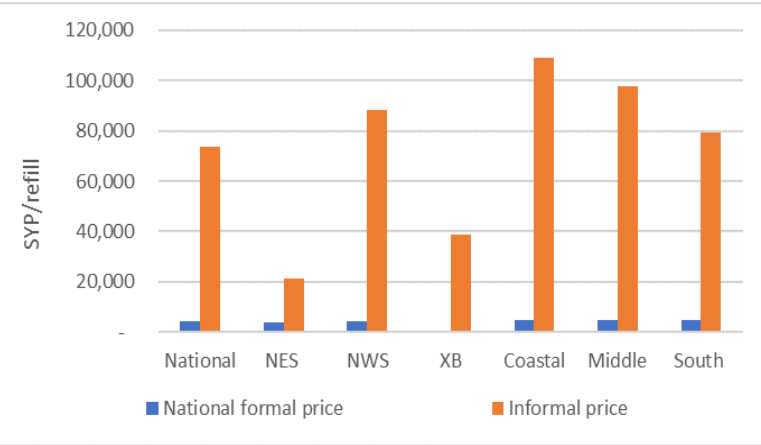


Chart 9: Formal and informal butane gas cylinder prices, SYP\*\*\*\*



Source: WFP

\*\*\*When measuring exchange rates, there are two quotations. The first is the direct quotation where the US dollar is the base of measuring the change in exchange rate against the local currency. The second one is the indirect quotation where the local currency is the base of measuring the change in the exchange rate against the US dollar. The change in the exchange rate used below reflects the indirect quotation (measuring how much has the Syrian pound improved (appreciated) or worsened (depreciated) against the US dollar).  
\*\*\*\*No formal prices have been reported in the cross-border region because there is no subsidized diesel or butane gas in the region.

Terms of Trade (ToT)<sup>4</sup>

ToT between wage labour and wheat flour

The national average non-skilled labour wage, representing construction, off-loading and agricultural labour, was recorded at SYP 7,540/day (up four percent m-o-m) in September 2021. Moreover, the wage rate was 64 percent above its y-o-y level and 30 percent above levels recorded in March 2021 - Chart 10.

Damascus recorded the highest daily wage rate at SYP 10,667/day (unchanged m-o-m), while Deir-ez-Zor recorded the lowest daily wage rate at SYP 4,500/day (unchanged m-o-m). Broken down by region, the Coastal region recorded the highest wage rate of SYP 10,167/day (up 36 percent m-o-m), while Northeast Syria recorded the lowest wage rate of SYP 5,875/day (up five percent m-o-m).

The national average ToT between wheat flour and wage labour, a proxy indicator for purchasing power, decreased by two percent between August and September 2021, reaching 3.7 kgs of wheat flour/daily wage compared to 3.8 kgs of wheat flour in August 2021.

The national average ToT between wheat flour and wage labour increased by 28 percent compared to March 2021 (six months ago), while it decreased by 14 percent compared to September 2020. In other words, the national average daily wage of a non-skilled labourer could buy 3.7 kgs of wheat flour in August 2021 compared to 2.9 kgs in March 2021, and 4.3 kgs in September 2020.

Broken down by region, the Cross-border region recorded the highest ToT at 4.9 kgs (down one percent m-o-m), while Northwest Syria recorded the lowest ToT at 2.7 kgs (up five percent m-o-m) - Chart 11.

ToT between sheep and wheat flour

The national average price of a two-year old alive male sheep increased by two percent m-o-m and by 36 percent since September 2020, reaching SYP 524,063/sheep in September 2021 (Chart 12).

Homs recorded the highest average price of a two-year old alive male sheep at SYP 624,667/head (unchanged m-o-m), while Deir-ez-Zor recorded the lowest price at SYP 411,579/head (down five percent m-o-m).

Broken down by region, Syria's Middle region recorded the highest average price across Syria at SYP 600,365/sheep (down one percent m-o-m), followed by Syria's Coastal region at SYP 571,181/sheep (up four percent m-o-m). Northeast Syria recorded the lowest price at SYP 451,296/sheep (unchanged m-o-m), followed by Northwest Syria at SYP 473,167/sheep (also unchanged m-o-m).

In September 2021, the ToT between an alive two-year old male sheep and wheat flour was 259 kg/sheep (down four percent m-o-m). However, the ToT worsened by 29 percent since September 2020.

Broken down by region, the Middle region recorded the highest ToT at 303 kg/sheep (down seven percent m-o-m), followed by the Cross-border region at 291 kg/sheep (down four percent m-o-m). Northwest Syria recorded the lowest ToT at 209 kg/sheep (down five percent m-o-m), followed by the Northeast Syria at 224 kg/sheep (down seven percent m-o-m) - Chart 13.

Chart 10: Daily wage for unskilled labour, SYP

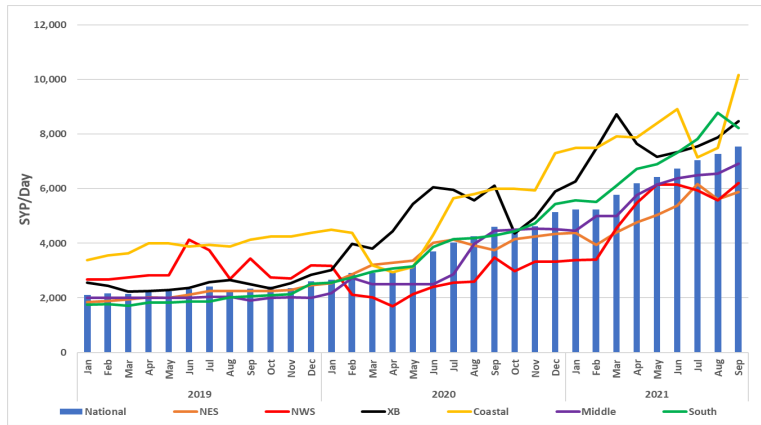


Chart 11: Terms of Trade (ToT) between wheat flour and wage rate

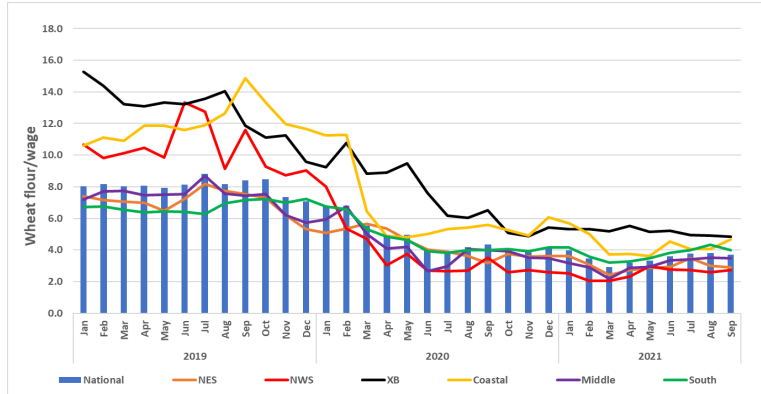


Chart 12: Price of livestock, SYP/one 2Y old sheep

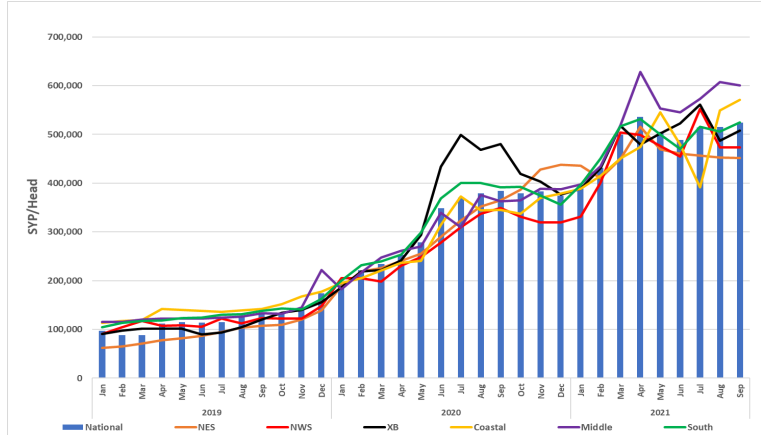
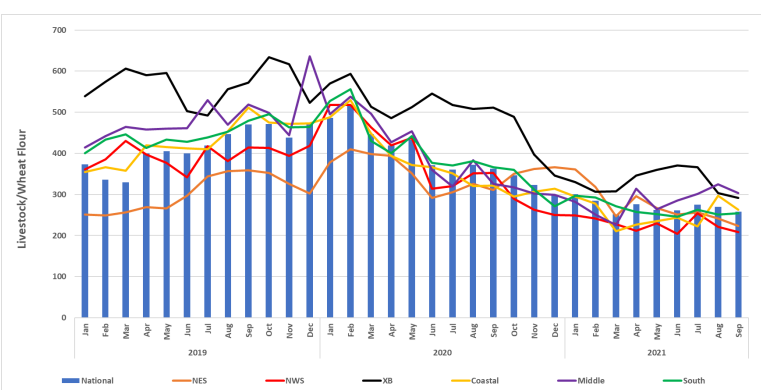


Chart 13: Terms of Trade (ToT) between wheat flour and the price of a 2 year old sheep



Source: WFP

4. The ToT are proxy indicators of the purchasing power of households that rely on livestock and/or casual labour as their main source of income for the purchase of cereals from local markets. ToT are important components of food security analysis. Changes in the terms of trade between wages/livestock and staple food commodities are indicative of the trends in purchasing power and the impact on the food security situation of households dependent on food purchases through income from daily wage labour and/or the sale of livestock.

Table 2: Prices of key COVID-19 items, week-on-week in September 2021, SYP

National average	Week 1 (SYP)	Week 2 (SYP)	Week 3 (SYP)	Week 4 (SYP)	% Change (September W4 & W1)
Surgeon mask	393	396	391	392	-0.5%
Gloves (pair)	674	670	680	704	4%
Alcohol spray (200 ml)	2,399	2,420	2,430	2,498	4%
Bleach bottle (L)	1,532	1,537	1,556	1,549	1%
Hand gel (50 ml)	1,113	1,130	1,151	1,186	7%
Soap bar	545	552	544	565	4%

## COVID-19 NFIs

Between August and September 2021, the price of all monitored COVID-19 items increased. M-o-m, the price of surgeon masks and plastic gloves increased by six and 12 percent, reaching SYP 393/mask and SYP 682/pair, respectively. Moreover, m-o-m, the price of bleach and soap bars increased by seven percent for both items and by six and three percent for alcohol spray and hand gel, reaching SYP 1,543/litre, SYP 551/bar, SYP 2,437/200 ml and SYP 1,145/50 ml respectively.

Compared to September 2020, the price of all COVID-19 items have increased. The prices of surgeon masks, alcohol spray and plastic gloves increased by six, 52, and 104 percent, respectively. Moreover, the price of hand gel, bleach and soap bars increased by 24, 47 and 48 percent, respectively.

Additionally, compared to February 2020 (prior to the COVID-19 outbreak in Syria), the price of all items in September 2021 significantly increased. For example the price of hand gel, alcohol spray and plastic gloves increased by 375, 483 and 918 percent, respectively. Also, the price of soap bars, bleach and surgeon masks increased by 270, 271 and 398 percent, respectively.

## Key food-items retail prices

### Red Split Lentils

M-o-m, the national average retail price of red split lentils has increased by nine percent throughout Syria, reaching SYP 3,098/kg. The price of red split lentils also increased by 18 percent since March 2021 (six months ago) and by 123 percent since September 2020.

Ar-Raqqa recorded the highest monthly average red split lentils price at SYP 4,150/kg (up five percent m-o-m), followed by Aleppo at SYP 3,546/kg (up 26 percent m-o-m). Al-Hasakeh recorded the lowest monthly average price at SYP 2,135/kg (up nine percent m-o-m), followed by Deir-ez-Zor at SYP 2,198/kg (down five percent m-o-m).

Broken down by region, Northwest Syria recorded the highest monthly average price at SYP 3,842/kg (up 21 percent m-o-m), followed by the Cross-border region at SYP 3,427/kg (up 34 percent m-o-m). While Northeast Syria recorded the lowest monthly average price of red split lentils at SYP 2,881/kg (up nine percent m-o-m), followed by the Southern region at SYP 2,950/kg (up one percent m-o-m) - Chart 14.

### Sugar

In September 2021, the national average retail price of sugar increased by 18 percent m-o-m, reaching SYP 2,732/kg. Moreover, the national average price increased by 16 percent since March 2021 (six months ago) and by 125 percent since September 2020. Rural Damascus recorded the highest monthly average sugar price at SYP 2,962/kg (up 32 percent m-o-m), while Al-Hasakeh recorded the lowest monthly average price of SYP 2,081/kg (up 12 percent m-o-m). Broken down by region, the Syria's Southern region recorded the highest monthly average price of SYP 2,850/kg (up 20 percent m-o-m), followed by the Coastal region at SYP 2,763/kg (up 20 percent m-o-m). The Cross-border region recorded the lowest monthly average price at SYP 2,450/kg (up 15 percent m-o-m), followed by Northeast Syria at SYP 2,638/kg (up 16 percent m-o-m) - Chart 15.

Table 3: Monthly price changes of key COVID-19 items, SYP

National average	Feb-20 (SYP)	Sep-21 (SYP)	% Change
Surgeon mask	79	393	398%
Gloves (pair)	67	682	918%
Alcohol spray (200 ml)	418	2,437	483%
Bleach bottle (L)	416	1,543	271%
Hand gel (50 ml)	241	1,145	375%
Soap bar	149	551	270%

Source: WFP

Chart 14: Retail Prices of Red Split Lentils, SYP

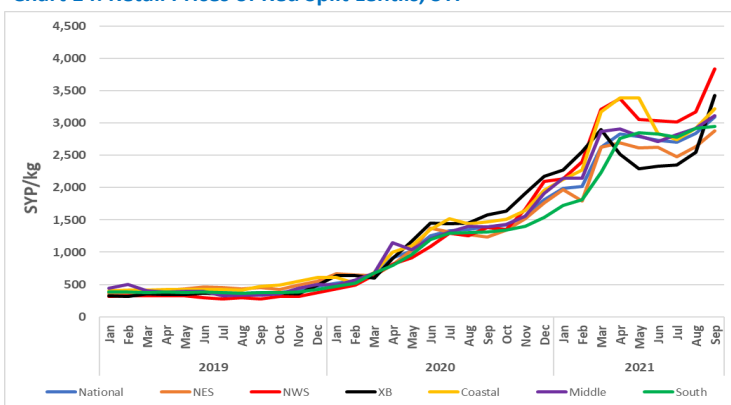
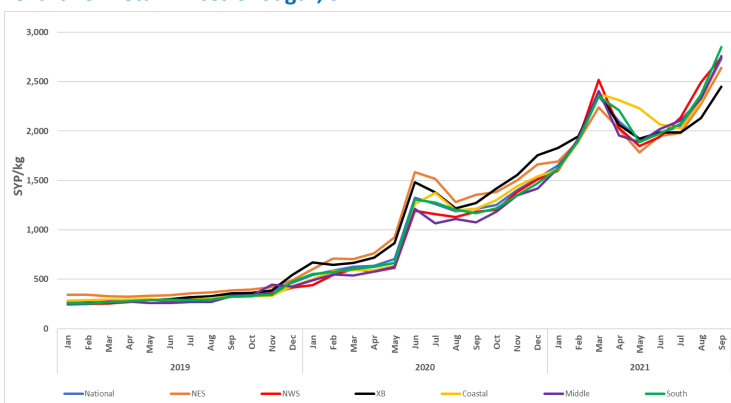


Chart 15: Retail Prices of Sugar, SYP



Source: WFP

Table 4. Market Price of Main Commodities in Syrian Pounds: September 2021

Commodity	Governorate	Current Price	Price change 1M (%)	Price change 6 M (%)	Price change 12 M (%)	Average Change 1M	Average Change 6 M	Average Change 12 M	Commodity	Governorate	Current Price	Price change 1M (%)	Price change 6 M (%)	Price change 12 M (%)	Average Change 1M	Average Change 6 M	Average Change 12 M
Bread Public (1.1 kg)	Aleppo*	246	2	98	481	↗	↑	↑	Dates (kg)	Aleppo	5,806	23	10	61	↗	↗	↑
	Damascus	200	-	88	357	↔	↑	↑		Damascus	5,792	5	12	55	↗	↗	↑
	Dar'a	249	3	78	365	↗	↑	↑		Dar'a	5,855	16	14	57	↗	↗	↑
	Deir-ez-Zor	286	2	73	350	↗	↑	↑		Deir-ez-Zor	3,607	12	4	47	↗	↗	↑
	Hama	250	-	150	491	↔	↑	↑		Hama	5,800	16	7	47	↗	↗	↑
	Al-Hasakeh	200	-	100	373	↔	↑	↑		Al-Hasakeh	4,396	1	4	73	↗	↗	↑
	Homs	250	1	150	491	↗	↑	↑		Homs	4,887	22	-10	24	↗	↓	↗
	Idleb*	NA	-	-	-	↔	↔	↔		Idleb	4,474	9.2	-11	68	↗	↓	↑
	Lattakia	249	-1	149	488	↓	↑	↑		Lattakia	6,125	24	11	43	↗	↗	↑
	Quneitra	250	-	81	491	↔	↑	↑		Quneitra	5,975	33	16	68	↑	↗	↑
	Ar-Raqqa	212	-	89	189	↔	↑	↑		Ar-Raqqa	4,025	0.2	-2	38	↗	↓	↑
	Rural Damascus	202	-6	102	235	↓	↑	↑		Rural Damascus	5,081	0.3	0.2	42	↗	↗	↑
	As-Sweida	200	-	100	373	↔	↑	↑		As-Sweida	5,583	4	-3	62	↗	↓	↑
	Tartous	250	-	68	257	↔	↑	↑		Tartous	4,542	-16	-28	20	↓	↓	↗
Bread Shop (1.1 kg)	Aleppo	2,099	12	9	119	↗	↗	↑	Diesel (parallel market, L)	Aleppo	3,116	19	45	204	↗	↑	↑
	Damascus	2,239	6	8	70	↗	↗	↑		Damascus	3,114	3	92	509	↗	↑	↑
	Dar'a	2,069	7	10	151	↗	↗	↑		Dar'a	3,345	20	103	432	↗	↑	↑
	Deir-ez-Zor	NA	-	-	-	↔	↔	↔		Deir-ez-Zor	1,596	20	123	480	↗	↑	↑
	Hama	2,023	2	130	84	↗	↑	↑		Hama	3,222	20	75	544	↗	↑	↑
	Al-Hasakeh	1,421	37	22	55	↑	↗	↑		Al-Hasakeh	229	-	-	53	↔	↔	↑
	Homs	1,949	5	11	77	↗	↗	↑		Homs	2,848	26	57	470	↑	↑	↑
	Idleb	1,843	9	0.3	94	↗	↗	↑		Idleb	2,984	12	6	135	↗	↗	↑
	Lattakia	2,576	11	95	329	↗	↑	↑		Lattakia	2,847	46	105	481	↑	↑	↑
	Quneitra	2,125	2	6	18	↗	↗	↗		Quneitra	3,041	18	126	595	↗	↑	↑
	Ar-Raqqa	1,595	-0.01	17	190	↓	↗	↑		Ar-Raqqa	1,213	5	79	396	↗	↑	↑
	Rural Damascus	2,137	0.2	6	62	↗	↗	↑		Rural Damascus	3,429	28	116	654	↑	↑	↑
	As-Sweida	2,091	2	6	90	↗	↗	↑		As-Sweida	3,375	33	130	546	↑	↑	↑
	Tartous	1,397	3	9	16	↗	↗	↗		Tartous	3,775	33	151	844	↑	↑	↑
Bulgur (kg)	Aleppo	2,035	7	3	71	↗	↗	↑	US Dollar exchange rate (parallel market, \$1)	Aleppo	3,442	-4	15	-37	↓	↗	↓
	Damascus	2,192	3	11	68	↗	↗	↑		Damascus	3,471	-2	16	-35	↓	↗	↓
	Dar'a	2,430	6	22	99	↗	↗	↑		Dar'a	3,453	-3	16	-36	↓	↗	↓
	Deir-ez-Zor	2,038	1	6	141	↗	↗	↑		Deir-ez-Zor	3,400	-2	20	-34	↓	↗	↓
	Hama	2,277	5	-2	71	↗	↓	↑		Hama	3,433	-1	17	-36	↓	↗	↓
	Al-Hasakeh	1,867	9	2	48	↗	↗	↑		Al-Hasakeh	3,438	-3	12	-36	↓	↗	↓
	Homs	2,492	1	7	86	↗	↗	↑		Homs	3,435	-1	17	-36	↓	↗	↓
	Idleb	1,789	7	10	45	↗	↗	↑		Idleb	3,466	-5	11	-39	↓	↗	↓
	Lattakia	2,239	4	9	68	↗	↗	↑		Lattakia	3,438	-3	16	-35	↓	↗	↓
	Quneitra	2,132	0.4	14	99	↗	↗	↑		Quneitra	3,436	-2	16	-36	↓	↗	↓
	Ar-Raqqa	2,100	11	8	80	↗	↗	↑		Ar-Raqqa	3,439	-3	13	-36	↓	↗	↓
	Rural Damascus	2,202	5	12	62	↗	↗	↑		Rural Damascus	3,471	-2	15	-35	↓	↗	↓
	As-Sweida	2,403	-0.3	8	72	↓	↗	↑		As-Sweida	3,453	-2	16	-36	↓	↗	↓
	Tartous	2,503	4	-5	81	↗	↓	↑		Tartous	3,425	-2	16	-35	↓	↗	↓
Butane Cylinder (parallel market, 25 kg)	Aleppo	66,172	34	110	426	↑	↑	↑	Eggs (carton)	Aleppo	8,978	16	33	123	↗	↑	↑
	Damascus	76,667	133	277	411	↑	↑	↑		Damascus	9,056	11	35	102	↗	↑	↑
	Dar'a	93,500	10	246	445	↗	↑	↑		Dar'a	9,283	13	35	128	↗	↑	↑
	Deir-ez-Zor	29,444	7	31	194	↗	↑	↑		Deir-ez-Zor	9,227	13	35	131	↗	↑	↑
	Hama	69,000	29	105	791	↑	↑	↑		Hama	8,962	19	25	117	↗	↑	↑
	Al-Hasakeh	12,125	3	16	117	↗	↗	↑		Al-Hasakeh	9,090	16	40	146	↗	↑	↑
	Homs	117,321	82	256	1414	↑	↑	↑		Homs	9,060	15	26	120	↗	↑	↑
	Idleb	51,080	28	24	187	↑	↑	↑		Idleb	9,167	13	41	139	↗	↑	↑
	Lattakia	47,056	47	71	435	↑	↑	↑		Lattakia	8,903	17	28	89	↗	↑	↑
	Quneitra	62,792	24	244	457	↗	↑	↑		Quneitra	8,171	1	25	93	↗	↗	↑
	Ar-Raqqa	26,250	-13	37	204	↓	↑	↑		Ar-Raqqa	8,969	15	40	169	↗	↑	↑
	Rural Damascus	83,369	102	294	488	↑	↑	↑		Rural Damascus	9,281	19	35	112	↗	↑	↑
	As-Sweida	64,792	10	167	323	↗	↑	↑		As-Sweida	9,471	11	33	114	↗	↑	↑
	Tartous	170,694	122	463	1908	↑	↑	↑		Tartous	8,906	13	27	114	↗	↑	↑
Cheese (kg)	Aleppo	9,286	11	44	118	↗	↑	↑	Eggplant (kg)	Aleppo	801	12	-47	107	↗	↓	↑
	Damascus	8,186	16	39	121	↗	↑	↑		Damascus	1,022	3	-4	197	↗	↓	↑
	Dar'a	8,053	14	59	119	↗	↑	↑		Dar'a	799	18	-31	154	↗	↓	↑
	Deir-ez-Zor	7,765	12	50	106	↗	↑	↑		Deir-ez-Zor	565	-8	-57	132	↓	↓	↑
	Hama	7,858	1	42	92	↗	↑	↑		Hama	815	14	-39	117	↗	↓	↑
	Al-Hasakeh	5,771	2	7	92	↗	↗	↑		Al-Hasakeh	985	21	-33	133	↗	↓	↑
	Homs	7,367	11	34	80	↗	↑	↑		Homs	929	6	-31	147	↗	↓	↑
	Idleb	8,530	13	-0	175	↗	↓	↑		Idleb	949	26	-59	58	↑	↓	↑
	Lattakia	9,931	11	53	65	↗	↑	↑		Lattakia	1,008	59	-12	111	↑	↓	↑
	Quneitra	7,458	16	47	62	↗	↑	↑		Quneitra	774	10	-32	178	↗	↓	↑
	Ar-Raqqa	6,775	-0.1	40	109	↓	↑	↑		Ar-Raqqa	858	7	-43	129	↗	↓	↑
	Rural Damascus	8,177	21	39	135	↗	↑	↑		Rural Damascus	938	18	-16	174	↗	↓	↑
	As-Sweida	7,548	1	15	105	↗	↗	↑		As-Sweida	580	27	-54	140	↑	↓	↑
	Tartous	8,883	-7	54	110	↓	↑	↑		Tartous	837	-16	-27	93	↓	↓	↑
Chickpeas (kg)	Aleppo	2,325	1	1	111	↗	↗	↑	Fish (tuna, canned) - 160 gm	Aleppo	2,404	9	0.3	110	↗	↗	↑
	Damascus	3,400	5	43	136	↗	↑	↑		Damascus	2,958	9	28	71	↗	↑	↑
	Dar'a	3,286	7	52	154	↗	↑	↑		Dar'a	2,869	17	9	86	↗	↗	↑
	Deir-ez-Zor	2,421	-1	16	145	↓	↗	↑		Deir-ez-Zor	2,448	0.1	29	98	↗	↑	↑
	Hama	3,588	4	30	157	↗	↑	↑		Hama	3,017	12	-14	63	↗	↓	↑
	Al-Hasakeh	2,698	31	56	81	↑	↑	↑		Al-Hasakeh	2,271	3	-6	30	↗	↓	↑
	Homs	3,226	2	17	129	↗	↗	↑		Homs	2,974	11	-15	61	↗	↓	↑
	Idleb	2,964	26	46	192	↑	↑	↑		Idleb	2,478	18	1	115	↗	↗	↑
	Lattakia	3,781	6	32	170	↗	↑	↑		Lattakia	2,897	7	9	108	↗	↗	↑
	Quneitra	3,030	-4	47	182	↓	↑	↑		Quneitra	2,755	10	7	63	↗	↗	↑
	Ar-Raqqa	4,875	32	75	257	↑	↑	↑		Ar-Raqqa	2,562	12	11	61	↗	↗	↑
	Rural Damascus	3,381	16	50	157	↗	↑	↑		Rural Damascus	2,898	13	20	59	↗	↗	↑
	As-Sweida	3,285	12	32	159	↗	↑	↑		As-Sweida	2,655	5	7	75	↗	↗	↑
	Tartous	3,740	8	23	167	↗	↗	↑		Tartous	2,746	40	-9	60	↑	↓	↑
Key:	↑	Price increase equal to or greater than 25 percent															

Commodity	Governorate	Current Price	Price change 1M (%)	Price change 6 M (%)	Price change 12 M (%)	Average Change 1M	Average Change 6 M	Average Change 12 M	Commodity	Governorate	Current Price	Price change 1M (%)	Price change 6 M (%)	Price change 12 M (%)	Average Change 1M	Average Change 6 M	Average Change 12 M
Iodised salt (kg)	Aleppo	838	7	4	86	↗	↗	↑	Sheep 2Y old Male (head)	Aleppo	488,722	2	0.2	20	↗	↗	↗
	Damascus	639	1	48	265	↗	↑	↑		Damascus	541,111	-1	5	19	↓	↗	↗
	Dar'a	603	5	11	97	↗	↗	↑		Dar'a	517,889	-0.3	-0.1	54	↓	↓	↑
	Deir-ez-Zor	456	-4	5	291	↓	↗	↑		Deir-ez-Zor	411,579	-5	-3	1	↓	↓	↗
	Hama	723	0.5	-22	-5	↗	↓	↓		Hama	561,250	-2	8	55	↓	↗	↑
	Al-Hasakeh	548	7	13	37	↗	↗	↗		Al-Hasakeh	461,667	2	4	21	↗	↗	↗
	Homs	933	3	0.3	25	↗	↗	↗		Homs	624,667	-0.4	20	72	↓	↗	↑
	Idleb	687	35	7	262	↑	↗	↗		Idleb	531,358	3	-4	12	↗	↓	↗
	Lattakia	635	-1	-9	226	↓	↓	↑		Lattakia	531,250	0.1	18	52	↗	↗	↑
	Quneitra	391	-1	-12	26	↓	↓	↑		Quneitra	536,422	9	3	37	↗	↗	↑
	Ar-Raqqa	818	9	41	130	↗	↑	↑		Ar-Raqqa	481,250	2	0.1	48	↗	↗	↑
	Rural Damascus	733	50	73	454	↑	↑	↑		Rural Damascus	539,020	8	3	30	↗	↗	↑
As-Sweida	803	-1	46	141	↓	↑	↑	As-Sweida	497,500	4	-0.2	30	↗	↓	↑		
Tartous	814	-7	55	365	↓	↑	↑	Tartous	611,111	8	36	80	↗	↑	↑		
Red split lentils (kg)	Aleppo	3,546	26	14	148	↑	↗	↑	Sugar (kg)	Aleppo	2,552	11	6	114	↗	↗	↑
	Damascus	3,253	4	50	131	↗	↑	↑		Damascus	2,909	19	30	149	↗	↑	↑
	Dar'a	2,909	8	45	120	↗	↑	↑		Dar'a	2,756	13	16	150	↗	↗	↑
	Deir-ez-Zor	2,198	-5	-17	110	↓	↓	↑		Deir-ez-Zor	2,764	13	27	98	↗	↑	↑
	Hama	3,270	10	14	133	↗	↗	↑		Hama	2,855	19	19	165	↗	↗	↑
	Al-Hasakeh	2,135	9	-2	50	↗	↓	↑		Al-Hasakeh	2,081	12	-5	58	↗	↓	↑
	Homs	2,994	1	4	115	↗	↗	↑		Homs	2,676	18	11	149	↗	↗	↑
	Idleb	3,517	33	24	123	↑	↗	↑		Idleb	2,659	19	7	114	↗	↗	↑
	Lattakia	3,453	12	18	130	↗	↗	↑		Lattakia	2,661	12	15	122	↗	↗	↑
	Quneitra	2,825	1	24	147	↗	↗	↑		Quneitra	2,784	18	20	150	↗	↗	↑
	Ar-Raqqa	4,150	5	37	190	↗	↑	↑		Ar-Raqqa	2,935	24	25	130	↗	↑	↑
	Rural Damascus	3,026	-6	30	125	↓	↑	↑		Rural Damascus	2,962	32	32	133	↑	↑	↑
As-Sweida	2,733	2	7	98	↗	↗	↑	As-Sweida	2,867	19	11	153	↗	↗	↑		
Tartous	2,993	9	-12	109	↗	↓	↑	Tartous	2,857	29	17	132	↑	↗	↑		
Meat (beef, kg)	Aleppo	22,208	0.4	20	75	↗	↗	↑	Tomato (kg)	Aleppo	1,112	36	-16	191	↑	↓	↑
	Damascus	21,535	-2	7	53	↓	↗	↑		Damascus	1,264	28	29	234	↑	↑	↑
	Dar'a	19,856	1	7	77	↗	↗	↑		Dar'a	1,095	47	-1	199	↑	↓	↑
	Deir-ez-Zor	16,654	-1	10	34	↓	↗	↑		Deir-ez-Zor	1,017	7	-1	183	↗	↓	↑
	Hama	20,100	1	10	58	↗	↗	↑		Hama	1,257	26	17	163	↑	↗	↑
	Al-Hasakeh	18,375	1	24	25	↗	↗	↑		Al-Hasakeh	1,198	32	-6	116	↑	↓	↑
	Homs	19,808	-3	9	55	↓	↗	↑		Homs	1,262	26	18	159	↑	↗	↑
	Idleb	20,241	2	4	54	↗	↗	↑		Idleb	1,806	22	-6	337	↗	↓	↑
	Lattakia	22,000	-	11	83	↔	↗	↑		Lattakia	1,314	33	1	163	↑	↗	↑
	Quneitra	21,833	4	23	59	↗	↗	↑		Quneitra	1,064	37	6	267	↑	↗	↑
	Ar-Raqqa	16,000	4	20	76	↗	↗	↑		Ar-Raqqa	1,260	30	-7	107	↑	↓	↑
	Rural Damascus	20,498	-5	1	58	↓	↗	↑		Rural Damascus	1,141	22	18	237	↗	↗	↑
As-Sweida	20,000	-	16	76	↔	↗	↑	As-Sweida	1,097	33	-9	205	↑	↓	↑		
Tartous	23,222	-2	11	98	↓	↗	↑	Tartous	1,482	17	26	202	↗	↑	↑		
White beans (kg)	Aleppo	5,825	14	2	105	↗	↗	↑	Unskilled Labor wage*	Aleppo	7,208	12	19	65	↗	↗	↑
	Damascus	6,582	3	0.03	81	↗	↗	↑		Damascus	10,667	-	46	70	↔	↑	↑
	Dar'a	7,186	7	5	100	↗	↗	↑		Dar'a	7,500	11	41	110	↗	↑	↑
	Deir-ez-Zor	6,735	9	9	231	↗	↗	↑		Deir-ez-Zor	4,500	-0.4	57	80	↓	↑	↑
	Hama	6,293	8	-6	90	↗	↓	↑		Hama	6,800	0.8	36	53	↗	↑	↑
	Al-Hasakeh	4,940	13	1	128	↗	↗	↑		Al-Hasakeh	7,396	20	37	48	↗	↑	↑
	Homs	6,364	2	-5	93	↗	↓	↑		Homs	7,256	9	45	62	↗	↑	↑
	Idleb	5,425	7	15	199	↗	↗	↑		Idleb	7,766	5	-16	41	↗	↓	↑
	Lattakia	6,919	8	1	108	↗	↗	↑		Lattakia	10,444	13	44	74	↗	↑	↑
	Quneitra	5,667	-0.2	14	211	↓	↗	↑		Quneitra	7,750	-	30	114	↔	↑	↑
	Ar-Raqqa	5,908	31	-5	156	↑	↓	↑		Ar-Raqqa	6,583	-2	15	42	↓	↗	↑
	Rural Damascus	5,822	-9	-11	102	↓	↓	↑		Rural Damascus	8,542	-14	17	74	↓	↗	↑
As-Sweida	6,500	-	-14	318	↔	↓	↑	As-Sweida	7,750	10	60	210	↗	↑	↑		
Vegetable oil (L)	Tartous	6,504	5	-12	124	↗	↓	↑	Wheat Flour (kg)	Tartous	9,889	71	15	65	↑	↗	↑
	Aleppo	7,249	8	-7	148	↗	↓	↑		Aleppo	2,050	6	7	109	↗	↗	↑
	Damascus	7,642	2	-10	150	↗	↓	↑		Damascus	2,186	4	13	93	↗	↗	↑
	Dar'a	8,354	8	-8	168	↗	↓	↑		Dar'a	2,189	5	15	102	↗	↗	↑
	Deir-ez-Zor	7,493	4	15	169	↗	↗	↑		Deir-ez-Zor	2,031	4	-2	90	↗	↓	↑
	Hama	8,435	13	-10	168	↗	↓	↑		Hama	1,943	6	-16	74	↗	↓	↑
	Al-Hasakeh	5,406	3	-21	128	↗	↓	↑		Al-Hasakeh	2,069	22	25	61	↗	↑	↑
	Homs	8,179	11	-12	160	↗	↓	↑		Homs	2,010	6	-12	81	↗	↓	↑
	Idleb	6,512	4	1	222	↗	↗	↑		Idleb	1,718	10	-5	89	↗	↓	↑
	Lattakia	8,281	17	-10	168	↗	↓	↑		Lattakia	2,119	20	8	110	↗	↗	↑
	Quneitra	8,025	6	-9	159	↗	↓	↑		Quneitra	1,940	4	11	73	↗	↗	↑
	Ar-Raqqa	6,365	1	-12	185	↗	↓	↑		Ar-Raqqa	1,933	-3	19	96	↓	↗	↑
Rural Damascus	7,833	3	-9	148	↗	↓	↑	Rural Damascus	1,963	-0.1	3	98	↓	↗	↑		
As-Sweida	8,104	6	-9	150	↗	↓	↑	As-Sweida	1,998	-3	-2	86	↓	↓	↑		
Tartous	7,917	4	-12	152	↗	↓	↑	Tartous	2,222	15	-4	96	↗	↓	↑		
Parsley (packet)	Aleppo	474	56	184	90	↑	↑	↑	Pasta (spaghetti)	Aleppo	4,005	7	29	176	↗	↑	↑
	Damascus	279	3	40	214	↗	↑	↑		Damascus	3,450	6	34	125	↗	↑	↑
	Dar'a	351	32	103	193	↑	↑	↑		Dar'a	3,651	11	35	162	↗	↑	↑
	Deir-ez-Zor	248	13	50	297	↑	↑	↑		Deir-ez-Zor	2,514	-15	33	160	↓	↑	↑
	Hama	380	49	90	110	↑	↑	↑		Hama	3,912	14	-1	134	↗	↓	↑
	Al-Hasakeh	208	-	-	40	↔	↔	↑		Al-Hasakeh	1,265	7	-45	-13	↗	↓	↓
	Homs	256	56	28	43	↑	↑	↑		Homs	4,375	7	11	161	↗	↗	↑
	Idleb	630	49	115	69	↑	↑	↑		Idleb	2,522	12	8	149	↗	↗	↑
	Lattakia	374	24	126	274	↗	↑	↑		Lattakia	3,503	9	4	81	↗	↗	↑
	Quneitra	272	11	66	120	↗	↑	↑		Quneitra	3,079	-2	19	148	↓	↗	↑
	Ar-Raqqa	587	39	230	522	↑	↑	↑		Ar-Raqqa	1,912	12	5	5	↗	↗	↗
	Rural Damascus	293	31	46	213	↑	↑	↑		Rural Damascus	3,620	10	46	144	↗	↑	↑