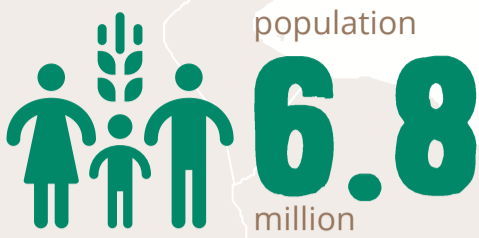


## COUNTRY CONTEXT

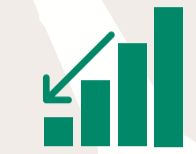


nascent **social protection** system



high levels of **inequality**

more than half of the population live in **poverty**



**financial default and political crisis**

## COUNTRY STRATEGIC PLAN focused on four strategic outcomes



**1**

Access to **life-saving, nutritious and affordable food**

**2**

Improved **livelihoods**

**3**

Access to **safety nets** for vulnerable Lebanese

**4**

Strengthened national **humanitarian response capacity**

## EVALUATION assesses progress to deliver the Country Strategic Plan from 2018 to mid-2020 and operations since 2016

January **2020**

April **2021**

*Evidence and lessons to inform the development of the new Country Strategic Plan in Lebanon*



**89**  
interviews with stakeholders



## CONCLUSIONS



WFP demonstrated its core comparative advantage through swift ability to adapt programming in a timely and effective way



The CSP introduced an integrated and coherent approach to addressing the root causes of vulnerability



WFP made a strategic shift to national capacity strengthening through support for the development of social safety nets



Need to work with partners to achieve better coordination of emergency cash assistance with livelihood interventions



Despite WFP efforts, the CSP did not help increase flexible funding



A major strength of WFP in-country capacity: vulnerability analysis and monitoring and evaluation

## RECOMMENDATIONS

**1**

Clarify WFP's core mandate, added value and strategic approaches

**2**

Enhance the strategic approaches, effectiveness and integration

**3**

Focus donor engagement on core funding, flexibility and response to national priorities

**4**

Expand emergency preparedness and response

**5**

Strengthen performance management strategy and learning

**6**

Ensure sufficient human resources capacity for responding to the increased challenges