

FAMINE IS THE EXTREME END OF A SPECTRUM OF HUNGER

FOOD SECURITY

IPC PHASE 1

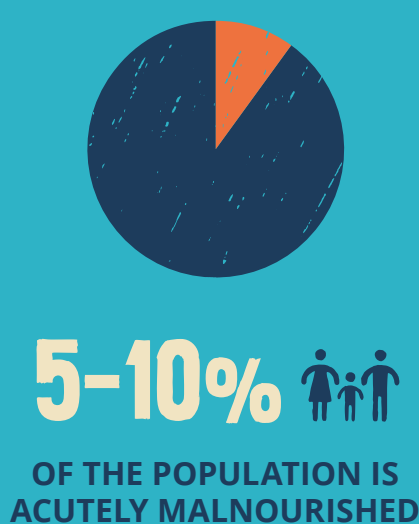
People have access to enough nutritious food without major changes to their daily lives at all times



FOOD INSECURITY

IPC PHASE 2

People are eating minimally adequate diets but must make significant changes to support non-food needs



ACUTE FOOD INSECURITY

IPC PHASE 3

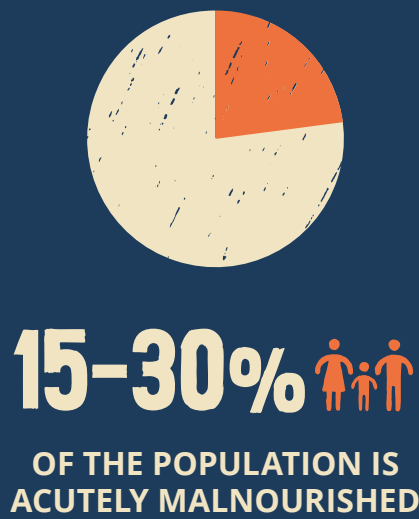
Some people are not consuming enough food and have high levels of malnutrition. Others are using up essential resources to support a limited diet



HUMANITARIAN EMERGENCY

IPC PHASE 4

People face extreme food shortages. Acute malnutrition and disease levels are high. Risk of hunger-related death is rapidly increasing. This is the final warning for action



FAMINE

IPC PHASE 5

Complete lack of food access and other basic needs. Every day at least two out of every 10,000 people die of starvation or disease – often mothers, the elderly and young children.

