



@WFP/Jessica Lawson

Highlights

o In January, the national average price of WFP’s standard reference food basket increased by two percent compared with December 2021, reaching SYP 225,398 (USD 90 at the official exchange rate of SYP 2,500/USD). This is the fifth consecutive month registering the highest ever recorded average price since monitoring started (2013).

o FAO’s annual Food Price Index for 2021 reached 125.7 points, edging closer to its all-time high 131.9 points in 2011. FAO’s Food Price Index for January 2022 was at 135.7 points, increasing by 1.1 points since December 2021.

o WFP’s Minimum Expenditure Basket in Syria covering 28 commodities 20 of which food items, increased by 4.8 percent m-o-m and by 18.1 percent since September 2021.

o In January 2022, the national average non-skilled labour wage, representing construction, off-loading and agricultural labour, was recorded at SYP 9,557/day (up 11 percent m-o-m) trailing the ever increasing price of goods in Syria.

o In January 2022, the Syrian pound’s informal exchange rate weakened by 1 percent, reaching SYP 3,586/USD. The Syrian pound’s informal exchange rate has depreciated by 19 percent since January 2021. The Official exchange rate is at SYP 2,500/USD.

o For further information, please contact:

Jan Michiels at Jan.Michiels@wfp.org

Moammar Alhosaen at Moammar.Alhosaen@wfp.org

Standard Food Basket

In January 2022, the national average price of a standard reference food basket¹ increased by two percent since December 2021, reaching SYP 225,398. The national average food basket price was 34 percent higher than that of July 2021 (six months ago) and 86 percent higher compared to January 2021 (Figure 1). January marked the highest ever recorded monthly average reference food basket price since monitoring started in 2013, representing the fifth consecutive month with record levels for the national average reference food basket price.

Month-on-month (m-o-m), 13 governorates recorded an increasing average reference food basket price in January 2022. Idleb remains the governorate with the highest average food basket price at SYP 259,539, up four percent m-o-m while Al-Hasakeh reported the lowest average price at SYP 206,506 also up four percent m-o-m.

The highest m-o-m increase of five percent was reported in Ar-Raqqa, where the price of the basket reached SYP 227,104. The lowest m-o-m increase (one percent) was reported in Aleppo, Lattakia and As-Sweida. While Quneitra saw a reduction by minus one percent m-o-m (Figure 1).

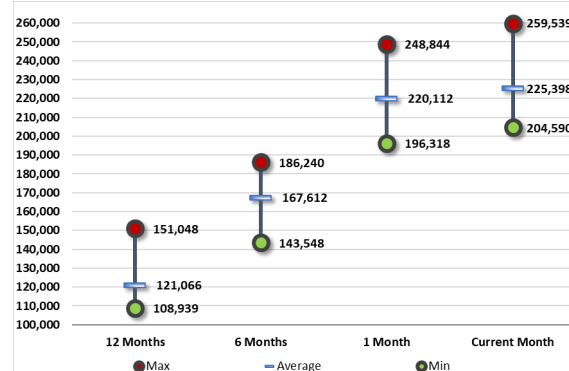
Year-on-year (y-o-y), the price of the reference food basket has significantly increased across all 14 governorates. Dar’a recorded the highest increase (up 111 percent), while Idleb recorded the lowest increase (up 72 percent).

The gap between the highest and lowest average food basket prices increased by five percent from SYP 52,527 in December 2021 to SYP 54,948 in January 2022 (Chart 1).

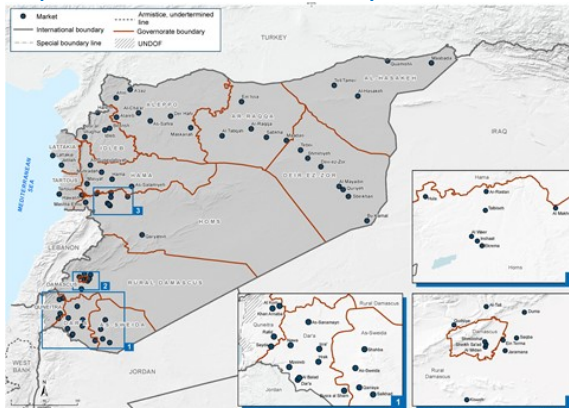
Figure 1: Food basket cost and changes, SYP

Governorate	Price January 2022	1 month change	6 months changes	12 months changes
Aleppo	SYP 219,671	1%	34%	76%
Damascus	SYP 219,176	2%	30%	92%
Dar’a	SYP 237,597	2%	38%	111%
Deir-ez-Zor	SYP 204,590	4%	43%	88%
Hama	SYP 225,511	5%	33%	87%
Al-Hasakeh	SYP 206,506	4%	42%	83%
Homs	SYP 214,123	1%	22%	77%
Idleb	SYP 259,539	4%	39%	72%
Lattakia	SYP 225,113	1%	27%	76%
Ar-Raqqa	SYP 227,104	5%	28%	84%
Rural Damascus	SYP 220,361	2%	31%	87%
As-Sweida	SYP 214,317	1%	26%	81%
Tartous	SYP 252,609	3%	69%	102%
Quneitra	SYP 229,352	-1%	28%	95%
Average	SYP 225,398	2%	34%	86%

Chart 1: National min., max. and average food basket cost, SYP



Map 1: Location of markets monitored by WFP



1. The standard food basket is a group of essential food commodities. In Syria, the food basket is set at a group of dry goods providing 2,060 kcal a day for a family of five during a month. The basket includes 37 kg bread, 19 kg rice, 19 kg lentils, 5 kg of sugar, and 7 litres of vegetable oil.

Minimum Expenditure Basket (MEB)

Overview and composition

A minimum expenditure basket (MEB) is defined as what a household requires in order to meet their essential needs on a regular or seasonal basis, as well as its cost. Essential (or basic) needs are defined as “the essential goods and services required on a regular or seasonal basis by households to ensure survival and minimum living standards, without resorting to negative coping mechanisms or compromising their health, dignity and essential livelihoods assets”². The MEB is a monetary threshold and is conceptually comparable to a poverty line. It describes the cost of meeting a household’s month worth of essential needs. The MEB is a complementary measure of inflation to the standard reference food basket as it comprises a diverse set of commodities covering both food and non-food items.

In Syria, the MEB has been designed following a collaborative process with the Cash Working Group (CWG). The MEB is used by the CWG as a comprehensive measure of the minimum cost of living in Syria, to measure how this cost evolves over time, and to help guide the setting of transfer values³. The MEB is calculated per person and per household covering the needs for one month. The MEB in Syria is composed of 28 commodities; 20 food commodities (fulfilling 2,075 kcal per person per month and the Sphere Standards for macro nutrients, covering cereals, oils tubers, animal protein, fruits and vegetables, pulses, dairy, sugar and salt), and 7 non-food commodities as well as a non-itemized non-food lump sum (covering hygiene, communication, energy, health, transport, clothing, housing/utilities, education and social events).

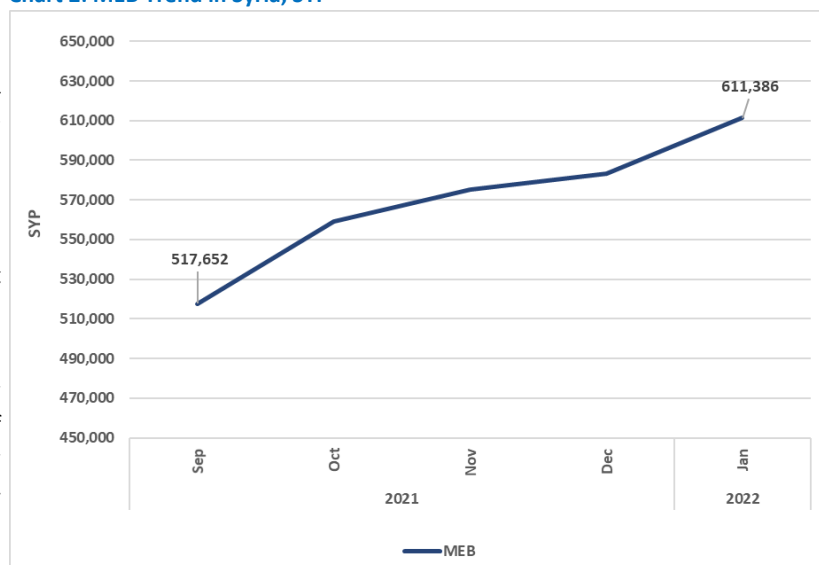
MEB Trend

In January 2022, the national average MEB for a household of five members was recorded at SYP 611,386 (US \$245), up 4.8 percent m-o-m and up 18.1 percent since September 2021. The rate of increase fluctuates considerably between months with a high of 8 percent recorded in October 2021 and a low of 1.4 percent recorded in December 2021.

On average, since monitoring of this MEB started (September 2021), the value of the MEB has increased by around SYP 23,434 per month representing around a 3.6 percent increase on a monthly basis (Chart 2).

The category of MEB items that increased the most in price since September 2021 are: communication services (up 89 percent), followed by tubers (up 48 percent) and pulses (31 percent). While the category of MEB items that increased the least since September 2021 are: energy (up three percent), followed by cooking oil, and sugar and salt (up seven percent each) and hygiene items (up 16 percent).

Chart 2: MEB Trend in Syria, SYP



Source: WFP

Inflation a worldwide phenomenon

Food prices have not only been increasing in Syria, The United Nations Food and Agriculture Organization’s Food Price Index, an index tracking monthly changes in the international prices of commonly-traded food commodities⁴, has outlined an increasing index since mid-2020 (Chart 3).

The index of food commodity prices rose by 1.1% in January 2022, pushed up by more expensive vegetable oils and dairy among other commodities. The gauge is edging closer to 2011’s all-time high, and unfavorable weather for crops and the fallout from an energy crisis threaten to keep prices high going forward. Thus, outlining worsening purchasing power trends for consumers worldwide which will affect the poorest and most vulnerable consumers more as they will find it more difficult to make ends meet⁵.

Rising food and oil prices as well as government expansionary monetary policies to address the Corona Virus pandemic, have meant that countries worldwide are experiencing price increases across all categories from food to services to industry. Many countries are now faced with increasing inflation rates⁶. In January 2022, The Euro-area’s annual inflation rate stood at 5.1 percent, representing the highest rate since 1991. The United States of America’s inflation rate stood at 7.5 percent, representing a 40-year national high (since 1982), and Turkey’s inflation rate stood at 48.7 percent, representing a 20-year national high. In January 2022, Lebanon’s annual inflation rate stood at a staggering 224 percent, representing a record high for the country.

Chart 3: International Food Price Index Trend since 2010



Source: UN's FAO

Bloomberg

² For more see: WFP’s Minimum Expenditure Basket Guidance Note <https://docs.wfp.org/api/documents/WFP-0000074198/download/>

³ For more information see: <https://www.humanitarianresponse.info/en/operations/syria/document/syria-htc-cash-working-group-minimum-expenditure-basket-meb-revision>

⁴ FAO “Food Price Index” <https://www.fao.org/worldfoodsituation/foodpricesindex/en/>

⁵ Aljazeera “World food prices jumped to toward a record last month” <https://www.aljazeera.com/economy/2022/2/3/world-food-prices-jumped-toward-a-record-last-month>

⁶ Trading Economics “Inflation Rate” <https://tradingeconomics.com/country-list/inflation-rate?continent=asia>

Legend on regions of analysis: 'Northwest'=Aleppo; 'Cross-border'=Idleb & Aleppo [A'zaz, Atarib & Afrin]; 'Coastal'=Lattakia & Tartous; 'Northeast'=Ar-Raqqa, Al-Hasakeh & Deir-ez-Zor; 'Middle'=Hama, Homs and Idleb [Senjar]; 'South'=Damascus, Rural Damascus, Dar'a, As-Sweida & Quneitra.

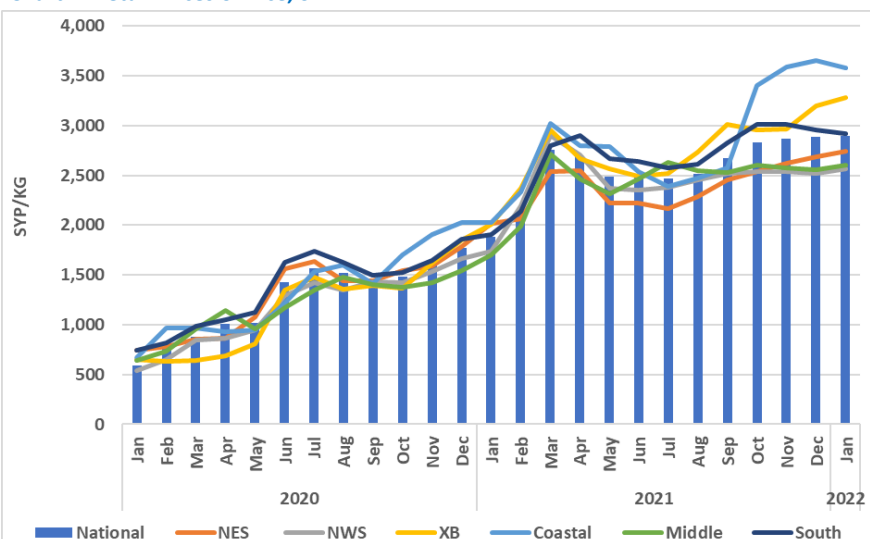
Staple cereals retail prices

Rice

The national average retail price of Egyptian white rice increased by one percent compared to December 2021 and by 54 percent y-o-y, reaching SYP 2,899/kg in January 2022. Tartous recorded the highest monthly average price at SYP 4,378/kg (down two percent m-o-m), followed by Dar'a at SYP 3,328/kg (down three percent m-o-m). Damascus recorded the lowest price at SYP 2,504/kg (down two percent m-o-m), followed by Hama at SYP 2,525 (up 0.5 percent m-o-m).

M-o-m, the Coastal region recorded the highest monthly average price at SYP 3,582/kg (down two percent m-o-m), followed by the Cross-border region at SYP 3,286/kg (up three percent m-o-m). Northwest Syria recorded the lowest average Egyptian white rice price by region at SYP 2,564/kg (up two percent m-o-m), followed by the Middle region at SYP 2,604/kg (up two percent m-o-m) - Chart 4.

Chart 4: Retail Prices of Rice, SYP

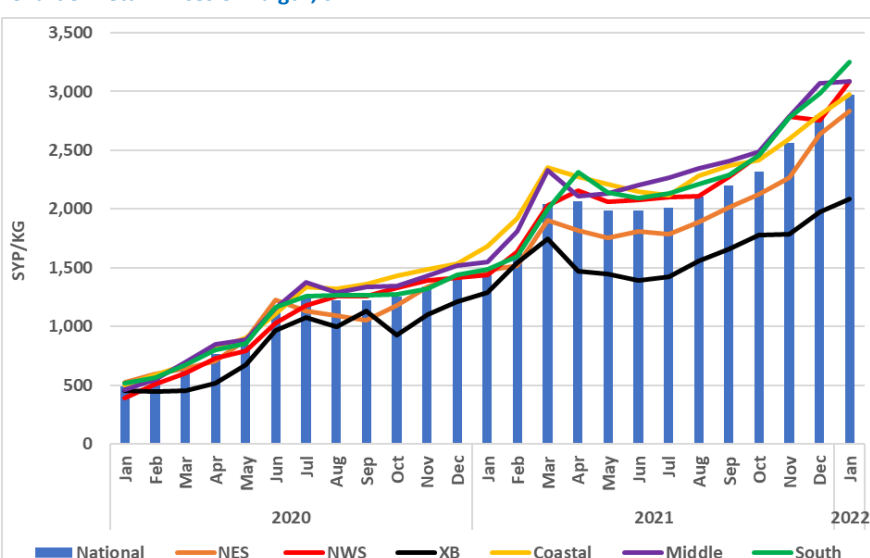


Bulgur

M-o-m, the national average retail price of bulgur increased by six percent at SYP 2,974/kg in January 2022, whereas y-o-y, the price of bulgur doubled, increasing by 100 percent. Rural Damascus recorded the highest bulgur retail price at SYP 3,385/kg (up 12 percent m-o-m), followed by Damascus at SYP 3,333/kg (up 13 percent m-o-m). While Idleb recorded the lowest price at SYP 2,285/kg (up six percent m-o-m), followed by Deir-ez-Zor at SYP 2,733/kg (up seven percent m-o-m).

The Southern Syria region recorded the highest monthly average bulgur price by region at SYP 3,253/kg (up nine percent m-o-m), followed by Northwest Syria at SYP 3,091/kg (up 12 percent m-o-m). On the other hand, the Cross-border region recorded the lowest average bulgur price at SYP 2,088/kg (up six percent m-o-m), followed by Northeast Syria at SYP 2,832/kg (up seven percent m-o-m) - Chart 5.

Chart 5: Retail Prices of Bulgur, SYP



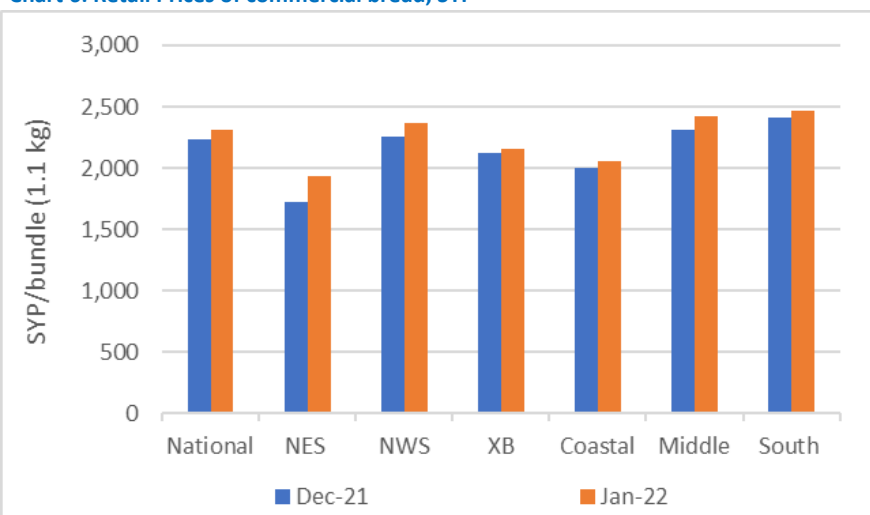
Bread*

The national average price of subsidized bread remained unchanged m-o-m at SYP 243/bundle in January 2022; whereas it has increased by 124 percent compared to 12 months ago.

Moreover, the price of commercial bread increased by four percent m-o-m and by 68 percent y-o-y, reaching SYP 2,310/bundle. Lattakia recorded the highest commercial bread price of SYP 2,703/bundle (down one percent m-o-m) followed by Hama at SYP 2,560 (up seven percent m-o-m). While Tartous recorded the lowest price of SYP 1,419/bundle (up 11 percent m-o-m) followed by Ar-Raqqa at SYP 1,595 (unchanged m-o-m) - Chart 6.

Broken down by region, the Southern region recorded the highest price of SYP 2,462/bundle (up two percent m-o-m), while the Northeast Syria region recorded the lowest price at SYP 1,932/bundle (up 12 percent m-o-m).

Chart 6: Retail Prices of commercial bread, SYP



Source: WFP Field Offices

*Starting from March 2021, WFP-monitored commercial bread has been switched from resold public bread bundles to commercial bread sold at shops. Prices for the past year have been adjusted to include commercial bread resold from shops. Moreover, all prices have been adjusted to reflect bread bundle size of 1.1 kg instead of 1.3 kg since November 2020.

Exchange rate**

In January 2022, the informal SYP/USD exchange rate depreciated by one percent m-o-m, reaching SYP 3,586/USD. Moreover, compared to a year ago, the Syrian pound has depreciated by 19 percent.

The highest informal exchange rate was reported in Damascus and Rural Damascus at SYP 3,618/USD (both depreciating by one percent m-o-m), followed by Idleb at SYP 3,598/USD (depreciating by one percent m-o-m). While the lowest informal exchange rate was reported in Tartous and Lattakia at SYP 3,571/USD (both depreciating by one percent m-o-m), followed by As-Sweida, Dar'a and Quneitra all at SYP 3,583/USD (with As-Sweida and Dar'a depreciating by one percent m-o-m while Quneitra by two percent) - Table 1.

Moreover, the formal exchange rate and the UN operational rate have both remained unchanged m-o-m at SYP 2,500/USD.

Diesel

The formal national average price of diesel remained unchanged compared to December 2021 remaining at SYP 474/litre in January 2022. This price though is 172 percent higher than 12 months earlier (SYP 174/litre).

Moreover, the informal national average price of transport diesel decreased by two percent m-o-m, while it increased by 138 percent y-o-y, reaching SYP 2,702/litre in January 2022. The informal price remains almost five times higher than the formal price (SYP 474/litre) - Chart 7.

Damascus recorded the highest informal price at SYP 3,544/litre (unchanged m-o-m), while Al-Hasakeh recorded the lowest price at SYP 557/litre (up 15 percent m-o-m).

Broken down by region, the Coastal region recorded the highest price of informal transport diesel at SYP 3,381/litre (up five percent m-o-m), while Northeast Syria recorded the lowest price at SYP 1,445/litre (up 15 percent m-o-m).

Moreover, the informal national average price of heating diesel decreased by six percent m-o-m, reaching SYP 2,686/litre. Broken down by region, the Coastal region recorded the highest price at SYP 3,250/litre (unchanged m-o-m), while Cross-border Syria recorded the lowest price at SYP 1,813/litre (unchanged m-o-m).

Butane gas prices

The national average price of formal butane gas cylinder (25,000 L) increased by one percent m-o-m and by 276 percent y-o-y, reaching SYP 10,469/refill in January 2022.

Moreover, the informal national average price of one butane gas cylinder (25,000 L) decreased by four percent m-o-m, while it increased by 194 percent y-o-y, reaching SYP 69,585/refill in January 2022. Damascus recorded the highest price at SYP 112,361/refill (up 12 percent m-o-m), while Al-Hasakeh recorded the lowest price at SYP 14,104/refill (up 6 percent m-o-m).

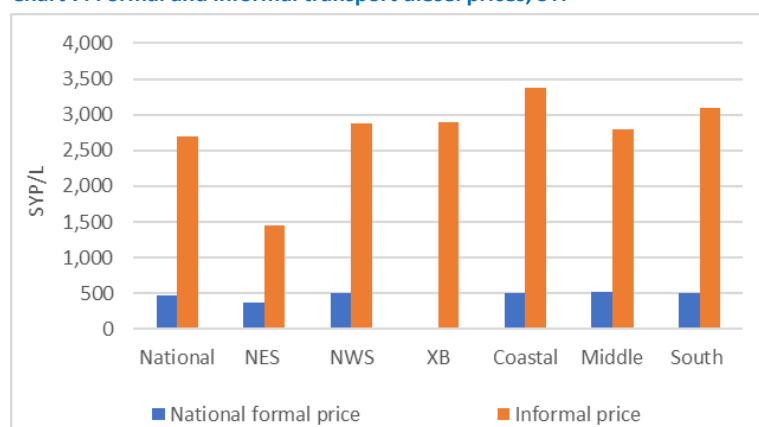
Broken down by region, the Southern region recorded the highest informal butane gas refill price at SYP 92,613/refill (down one percent m-o-m) followed by the Coastal region at SYP 81,959 (down 11 percent), while Northeast Syria recorded the lowest price at SYP 29,231/refill (up four percent m-o-m) followed by the Cross-border region at SYP 44,371 (up two percent m-o-m) - Chart 8.

Table 1: Informal market exchange rate, 1 USD to SYP

Governorate	January 2022	% change (m-o-m)	% change (y-o-y)
Aleppo	3,590	-1%	-20%
Al-Hasakeh	3,584	-1%	-19%
Ar-Raqqa	3,585	-1%	-19%
As-Sweida	3,583	-1%	-19%
Damascus	3,618	-1%	-20%
Dar'a	3,583	-1%	-20%
Deir-ez-Zor	3,569	-1%	-18%
Hama	3,576	-1%	-18%
Homs	3,576	-1%	-18%
Idleb	3,598	-1%	-20%
Lattakia	3,571	-1%	-18%
Quneitra	3,583	-2%	-20%
Rural Damascus	3,618	-1%	-20%
Tartous	3,571	-1%	-18%
National average	3,586	-1%	-19%
Official rate	2,500	0%	-50%
UN operational rate	2,500	0%	-50%

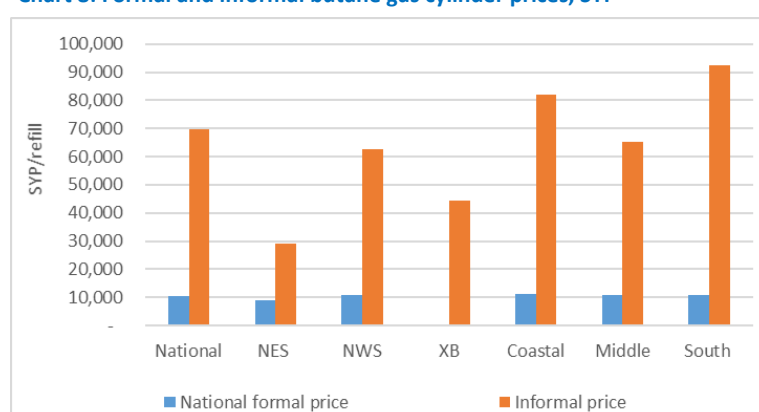
Source: WFP field offices

Chart 7: Formal and informal transport diesel prices, SYP***



Source: WFP

Chart 8: Formal and informal butane gas cylinder prices, SYP***



Source: WFP

**When measuring exchange rates, there are two quotations. The first is the direct quotation where the US dollar is the base of measuring the change in exchange rate against the local currency. The second one is the indirect quotation where the local currency is the base of measuring the change in the exchange rate against the US dollar. The change in the exchange rate used below reflects the indirect quotation (measuring how much has the Syrian pound improved (appreciated) or worsened (depreciated) against the US dollar).

***No formal prices have been reported in the cross-border region because there is no subsidized diesel or butane gas in the region.

Terms of Trade (ToT)⁷

ToT between wage labour and wheat flour

The national average non-skilled labour wage, representing construction, off-loading and agricultural labour, was recorded at SYP 9,557/day (up 11 percent m-o-m) in January 2022. Moreover, the non-skilled national average wage rate was 82 percent above its y-o-y level and 36 percent above levels recorded in July 2021 - Chart 9.

Lattakia recorded the highest daily non-skilled wage rate at SYP 15,333/day (up 4 percent m-o-m), while Deir-ez-Zor recorded the lowest daily non-skilled wage rate at SYP 4,274/day (down one percent m-o-m). Broken down by region, the Coastal region recorded the highest non-skilled wage rate of SYP 14,403/day (up nine percent m-o-m), while Northeast Syria recorded the lowest non-skilled wage rate of SYP 6,120/day (up 1 percent m-o-m).

The national average ToT between wheat flour and wage labour, a proxy indicator for purchasing power, increased by 10 percent between December 2021 and January 2022, reaching 3.99 kgs of wheat flour/daily wage compared to 3.63 kgs of wheat flour in December 2021.

The national average ToT between wheat flour and wage labour increased by six percent compared to July 2021 (six months ago), while it remained relatively unchanged compared to January 2021. In other words, the national average daily wage of a non-skilled labourer could buy 3.99 kgs of wheat flour in December 2021 compared to 3.77 kgs in July 2021, and 4.0 kgs in January 2021.

Broken down by region, the Coastal region recorded the highest ToT at 6.1 kgs (up 12 percent m-o-m), while Northwest Syria recorded the lowest ToT at 2.41 kgs (down six percent m-o-m) - Chart 10.

ToT between sheep and wheat flour

The national average price of a two-year old alive male sheep increased by two percent compared to December 2021 and by 24 percent since January 2021, reaching SYP 491,512/sheep in January 2022 (Chart 11). Tartous recorded the highest average price of a two-year old alive male sheep at SYP 682,639/head (up three percent m-o-m), while Deir-ez-Zor recorded the lowest price at SYP 393,452/head (down seven percent m-o-m).

Broken down by region, the Coastal region recorded the highest average price across Syria at SYP 589,606/sheep (down one percent m-o-m), followed by Northwest Syria at SYP 517,396/sheep (up nine percent m-o-m). While Northeast Syria recorded the lowest price at SYP 433,509/sheep (down two percent m-o-m), followed by the Cross-border region at SYP 459,206/sheep (up 9 percent m-o-m).

In January 2021, the ToT between an alive two-year old male sheep and wheat flour was 205 kg/sheep (up two percent m-o-m). However, the ToT worsened by 32 percent compared to January 2021.

Broken down by region, the Coastal region recorded the highest ToT at 250 kg/sheep (up two percent m-o-m), followed by the Southern region at 210 kg/sheep (down three percent m-o-m). While Northeast Syria recorded the lowest ToT at 190 kg/sheep (down five percent m-o-m), followed by Northwest Syria at 194 kg/sheep (up two percent m-o-m) - Chart 12.

Chart 9: Daily wage for unskilled labour, SYP

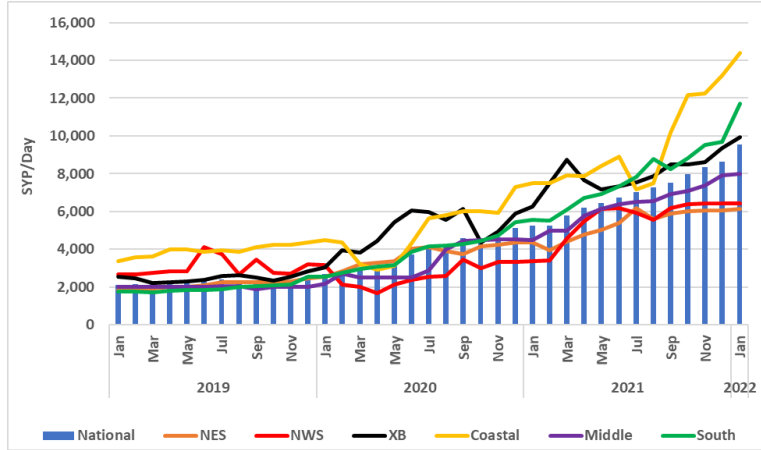


Chart 10: Terms of Trade (ToT) between wheat flour and wage rate

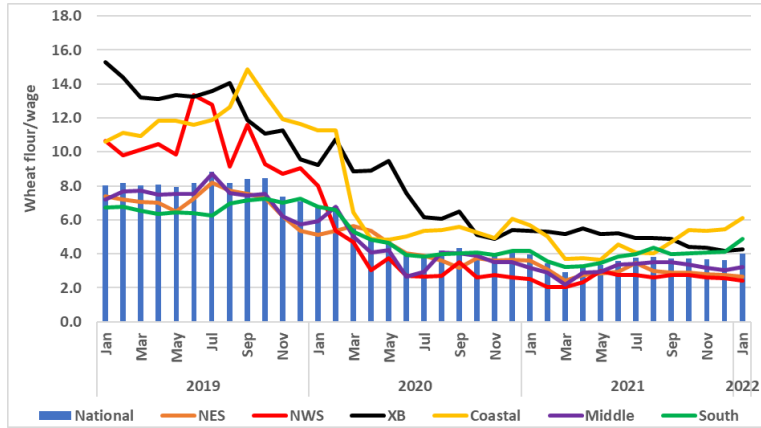


Chart 11: Price of livestock, SYP/one 2Y old sheep

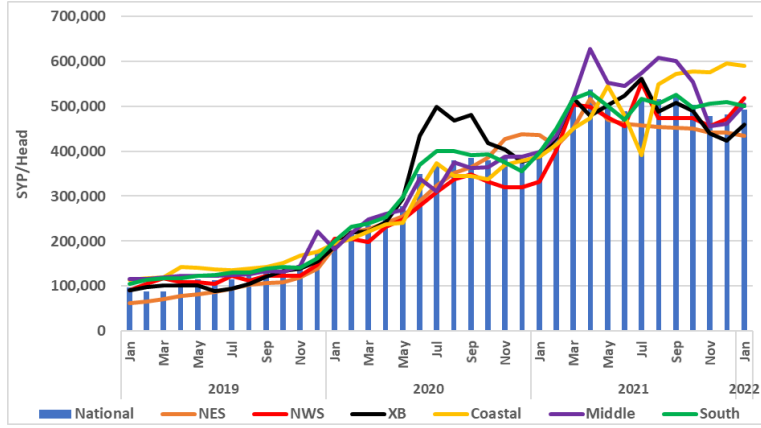
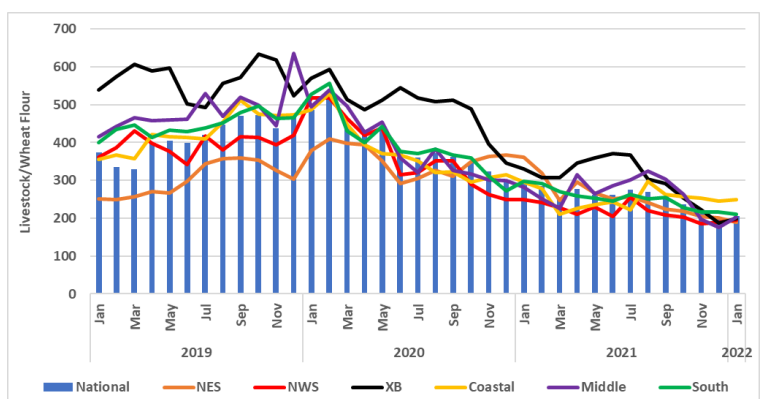


Chart 12: Terms of Trade (ToT) between wheat flour and the price of a 2 year old sheep



Source: WFP

⁷ The ToT are proxy indicators of the purchasing power of households that rely on livestock and/or casual labour as their main source of income for the purchase of cereals from local markets. ToT are important components of food security analysis. Changes in the terms of trade between wages/livestock and staple food commodities are indicative of the trends in purchasing power and the impact on the food security situation of households dependent on food purchases through income from daily wage labour and/or the sale of livestock.

Table 2: Prices of key COVID-19 items, week-on-week in January 2022, SYP

National average	Week 1 (SYP)	Week 2 (SYP)	Week 3 (SYP)	Week 4 (SYP)	% Change (JanW4 & W1)
Surgeon mask	401	396	401	406	1%
Gloves (pair)	761	770	774	788	4%
Alcohol spray (200 ml)	2,782	2,769	2,791	2,772	0%
Bleach bottle (L)	1,670	1,677	1,686	1,685	1%
Hand gel (50 ml)	1,305	1,258	1,260	1,232	-6%
Soap bar	652	670	666	685	5%

COVID-19 NFIs

Between December 2021 and January 2022, the price of all monitored COVID-19 items increased except for hand gel and alcohol spray. M-o-m, the price of soap bars increased by three percent, for surgeon masks and bleach the price increased by two percent each reaching SYP 668/bar, SYP 401/mask, SYP 1,680/litre, respectively. While for a pair of gloves the price was SYP 773 (up one percent m-o-m) and the price of alcohol spray remained unchanged m-o-m at SYP 2,779. Instead, the price of hand gel decreased by one percent m-o-m, reaching SYP 1,264/50 ml.

Compared to January 2021, the price of all COVID-19 items increased. The price of plastic gloves, soap bars and alcohol spray increased by 120, 71 and 57 percent, respectively. Moreover, the price of bleach, hand gel and surgeon masks increased by 43, 31 and 16 percent, respectively.

Additionally, (prior to the COVID-19 outbreak in Syria), the price of all items in January 2022 significantly increased compared to February 2020. For example the price of plastic gloves, alcohol spray and hand gel increased by 1,054, 565 and 424 percent, respectively. Also, the price of surgeon masks, soap bars and bleach increased by 408, 348 and 304 percent, respectively.

Prices of key food-items

Sugar

M-o-m, the national average retail price of sugar increased by 11 percent throughout Syria, reaching SYP 2,933/kg in January 2022. Compared to July 2021, the price of sugar increased by 43 percent and by 78 percent since January 2021.

Ar-Raqqa recorded the highest sugar price at SYP 4,193/kg (up 44 percent m-o-m), followed by Al-Hasakeh at SYP 3,204/kg (up 31 percent m-o-m). As-Sweida recorded the lowest average governorate sugar price at SYP 2,627/kg (up one percent m-o-m), followed by Quneitra at SYP 2,654/kg (up three percent m-o-m).

Broken down by region, Northeast Syria recorded the highest average price of sugar at SYP 3,399/kg (up 26 percent m-o-m), followed by the Cross-border region at SYP 2,991/kg (up 13 percent m-o-m). The Middle region recorded the lowest average price of sugar at SYP 2,726/kg (up six percent m-o-m), followed by the Southern region at SYP 2,747/kg (up four percent m-o-m) - Chart 13.

Vegetable oil

M-o-m, the national average retail price of vegetable oil throughout Syria decreased by one percent, reaching SYP 8,146/litre in January 2022. Compared to July 2021 the price of vegetable oil increased by 17 percent and by 69 percent y-o-y. Tartous recorded the highest vegetable oil price at SYP 9,347/litre (down one percent m-o-m), while Al-Hasakeh recorded the lowest price at SYP 6,313/litre (up one percent m-o-m).

Broken down by region, the Coastal region reported the highest price at SYP 9,022/litre (up one percent m-o-m), followed by the Southern region at SYP 8,798/litre (down three percent m-o-m). The Cross-border region reported the lowest price of vegetable oil at SYP 6,726/litre (up two percent m-o-m), followed by Northeast Syria at SYP 7,232 (up four percent m-o-m).

Table 3: Monthly price changes of key COVID-19 items, SYP

National average	Feb-20 (SYP)	Jan-22 (SYP)	% Change
Surgeon mask	79	401	408%
Gloves (pair)	67	773	1,054%
Alcohol spray (200 ml)	418	2,779	565%
Bleach bottle (L)	416	1,680	304%
Hand gel (50 ml)	241	1,264	424%
Soap bar	149	668	348%

Source: WFP

Chart 13: Retail Prices of Sugar, SYP

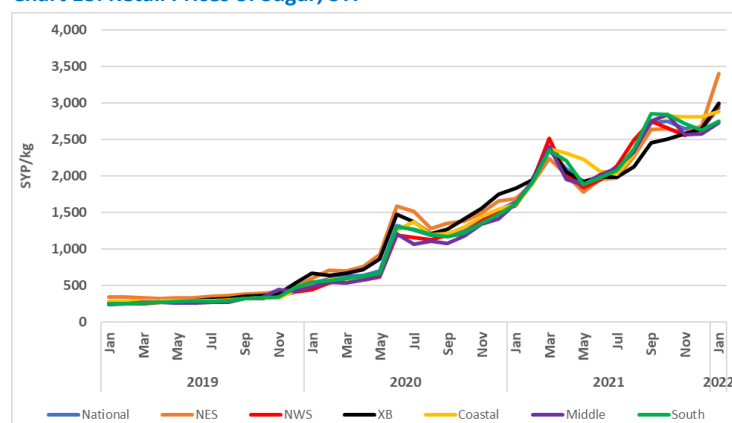


Chart 14: Retail Prices of Vegetable Oil, SYP

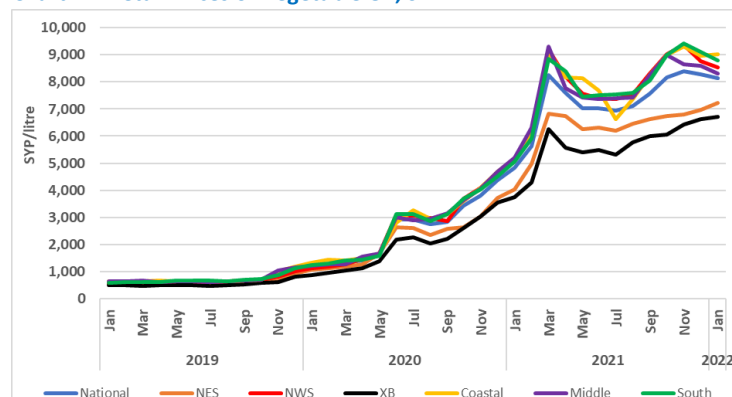


Table 5. Market Price of Main Commodities in Syrian Pounds: January 2022

Commodity	Governorate	Current Price	Price change	Price change	Price change	Average Change	Average Change	Average Change	Commodity	Governorate	Current Price	Price change	Price change	Price change	Average Change	Average Change	Average Change
			1M (%)	6 M (%)	12 M (%)	1M	6 M	12 M				1M (%)	6 M (%)	12 M (%)	1M	6 M	12 M
Bread Public (1.1 kg)	Aleppo*	246	0.8	16	106	↗	↗	↗	Dates (kg)	Aleppo	7,162	2	66	60	↗	↗	↗
	Damascus	200	-	14	100	↔	↗	↗		Damascus	8,125	5	48	83	↗	↗	↗
	Dar'a	262	-2	27	109	↘	↗	↗		Dar'a	7,623	3	58	89	↗	↗	↗
	Deir-ez-Zor	286	-	26	174	↔	↗	↗		Deir-ez-Zor	4,001	-1	36	7	↘	↗	↗
	Hama	250	-	13	150	↔	↗	↗		Hama	6,642	4	48	48	↗	↗	↗
	Al-Hasakeh	200	-	-22	100	↔	↘	↗		Al-Hasakeh	4,490	0.2	28	14	↗	↗	↗
	Homs	250	0.7	14	150	↗	↗	↗		Homs	5,062	-3	26	13	↘	↗	↗
	Idleb*	NA	-	-	-	↔	↔	↔		Idleb	5,073	3	24	50	↗	↗	↗
	Lattakia	273	0.3	-2	166	↗	↘	↗		Lattakia	7,464	2	27	32	↗	↗	↗
	Quneitra	250	-	11	93	↔	↗	↗		Quneitra	7,406	6	81	72	↗	↗	↗
	Ar-Raqqa	212	-	5	96	↔	↗	↗		Ar-Raqqa	3,700	-8	-6	-10	↘	↘	↘
	Rural Damascus	200	-	7	100	↔	↗	↗		Rural Damascus	7,485	4	52	65	↗	↗	↗
	As-Sweida	250	-	43	150	↔	↗	↗		As-Sweida	6,406	1	22	42	↗	↗	↗
	Tartous	250	-	15	135	↔	↗	↗		Tartous	4,633	2	-16	-7	↗	↘	↘
Bread Shop (1.1 kg)	Aleppo	2,416	5	39	66	↗	↗	↗	Diesel (parallel market, L)	Aleppo	2,877	-3	13	102	↘	↗	↗
	Damascus	2,586	6	30	116	↗	↗	↗		Damascus	3,544	-0.2	33	195	↘	↗	↗
	Dar'a	2,377	0.4	23	80	↗	↗	↗		Dar'a	2,984	-7	14	153	↘	↗	↗
	Deir-ez-Zor	NA	-	-	-	↔	↔	↔		Deir-ez-Zor	1,811	14	23	131	↗	↗	↗
	Hama	2,560	7	28	55	↗	↗	↗		Hama	2,733	-3	25	173	↘	↗	↗
	Al-Hasakeh	2,100	18	143	-24	↗	↗	↘		Al-Hasakeh	557	-	-18	271	↔	↘	↗
	Homs	2,322	3	31	111	↗	↗	↗		Homs	2,839	-6	45	184	↘	↗	↗
	Idleb	1,987	1	20	60	↗	↗	↗		Idleb	2,882	1	17	50	↗	↗	↗
	Lattakia	2,703	-1	45	286	↘	↗	↗		Lattakia	3,511	7	89	238	↗	↗	↗
	Quneitra	2,358	-1	18	4	↘	↗	↗		Quneitra	2,481	-5	7	117	↘	↗	↗
	Ar-Raqqa	1,595	-	-3	45	↔	↘	↗		Ar-Raqqa	1,777	14	100	349	↗	↗	↗
	Rural Damascus	2,442	1	18	88	↗	↗	↗		Rural Damascus	3,495	-5	44	168	↘	↗	↗
	As-Sweida	2,625	7	24	35	↗	↗	↗		As-Sweida	2,865	-12	23	132	↘	↗	↗
	Tartous	1,419	11	18	-29	↗	↗	↘		Tartous	3,250	3	43	223	↗	↗	↗
Bulgur (kg)	Aleppo	2,625	9	43	81	↗	↗	↗	US Dollar exchange rate (parallel market, \$1)	Aleppo	3,590	-1	-11	-20	↘	↘	↘
	Damascus	3,333	13	65	122	↗	↗	↗		Damascus	3,618	-1	-10	-20	↘	↘	↘
	Dar'a	3,225	6	45	124	↗	↗	↗		Dar'a	3,583	-1	-11	-20	↘	↘	↘
	Deir-ez-Zor	2,733	7	61	82	↗	↗	↗		Deir-ez-Zor	3,569	-1	-10	-18	↘	↘	↘
	Hama	3,022	14	38	96	↗	↗	↗		Hama	3,576	-1	-10	-18	↘	↘	↘
	Al-Hasakeh	2,910	-0.3	62	73	↘	↗	↗		Al-Hasakeh	3,584	-1	-10	-19	↘	↘	↘
	Homs	3,145	-8	35	103	↘	↗	↗		Homs	3,576	-1	-10	-18	↘	↘	↘
	Idleb	2,285	6	48	97	↗	↗	↗		Idleb	3,598	-1	-10	-20	↘	↘	↘
	Lattakia	3,214	8	57	102	↗	↗	↗		Lattakia	3,571	-1	-11	-18	↘	↘	↘
	Quneitra	3,025	6	47	108	↗	↗	↗		Quneitra	3,583	-2	-11	-20	↘	↘	↘
	Ar-Raqqa	2,888	15	52	117	↗	↗	↗		Ar-Raqqa	3,585	-1	-10	-19	↘	↘	↘
	Rural Damascus	3,385	12	68	123	↗	↗	↗		Rural Damascus	3,618	-1	-10	-20	↘	↘	↘
	As-Sweida	3,244	9	42	107	↗	↗	↗		As-Sweida	3,583	-1	-10	-19	↘	↘	↘
	Tartous	2,740	5	26	55	↗	↗	↗		Tartous	3,571	-1	-11	-18	↘	↘	↘
Butane Cylinder (parallel market, 25 kg)	Aleppo	55,137	-0.3	25	112	↘	↗	↗	Eggs (carton)	Aleppo	10,258	-1	39	79	↘	↗	↗
	Damascus	112,361	12	293	559	↗	↗	↗		Damascus	10,986	0.2	28	85	↗	↗	↗
	Dar'a	91,013	-11	42	228	↘	↗	↗		Dar'a	10,727	-1	26	81	↘	↗	↗
	Deir-ez-Zor	43,944	-1	98	175	↘	↗	↗		Deir-ez-Zor	10,923	-0.03	36	88	↘	↗	↗
	Hama	57,750	-15	31	110	↘	↗	↗		Hama	10,417	-0.5	30	64	↘	↗	↗
	Al-Hasakeh	14,104	6	42	32	↗	↗	↗		Al-Hasakeh	10,271	1	98	67	↗	↗	↗
	Homs	70,881	-8	115	158	↘	↗	↗		Homs	10,805	-4	31	70	↘	↗	↗
	Idleb	43,927	2	16	50	↗	↗	↗		Idleb	9,391	-2	32	77	↘	↗	↗
	Lattakia	80,307	-2	189	206	↘	↗	↗		Lattakia	10,403	-1	36	73	↘	↗	↗
	Quneitra	82,292	-2	94	330	↘	↗	↗		Quneitra	10,740	1	32	91	↗	↗	↗
	Ar-Raqqa	35,182	11	17	122	↗	↗	↗		Ar-Raqqa	10,153	-1	44	72	↘	↗	↗
	Rural Damascus	100,988	3	206	470	↗	↗	↗		Rural Damascus	11,018	3	41	85	↗	↗	↗
	As-Sweida	76,667	1	96	219	↗	↗	↗		As-Sweida	10,653	-5	4	76	↘	↗	↗
	Tartous	83,611	-18	102	179	↘	↗	↗		Tartous	10,869	-0.03	33	86	↘	↗	↗
Cheese (kg)	Aleppo	10,540	6	35	92	↗	↗	↗	Eggplant (kg)	Aleppo	2,440	75	236	99	↗	↗	↗
	Damascus	10,586	-1	60	102	↘	↗	↗		Damascus	2,475	58	89	137	↗	↗	↗
	Dar'a	11,152	4	67	131	↗	↗	↗		Dar'a	1,780	98	154	70	↗	↗	↗
	Deir-ez-Zor	9,917	10	63	102	↗	↗	↗		Deir-ez-Zor	1,649	43	356	48	↗	↗	↗
	Hama	11,300	0.1	57	119	↗	↗	↗		Hama	2,127	76	177	79	↗	↗	↗
	Al-Hasakeh	9,260	2	53	78	↗	↗	↗		Al-Hasakeh	1,967	41	90	77	↗	↗	↗
	Homs	9,315	-3	45	81	↘	↗	↗		Homs	1,721	75	113	46	↗	↗	↗
	Idleb	8,135	7	23	39	↗	↗	↗		Idleb	3,129	64	266	95	↗	↗	↗
	Lattakia	11,572	0.02	37	68	↗	↗	↗		Lattakia	1,592	15	157	30	↗	↗	↗
	Quneitra	9,975	1	60	109	↗	↗	↗		Quneitra	2,029	105	166	104	↗	↗	↗
	Ar-Raqqa	8,694	6	35	45	↗	↗	↗		Ar-Raqqa	2,328	30	346	108	↗	↗	↗
	Rural Damascus	10,380	-2	75	102	↘	↗	↗		Rural Damascus	2,011	53	141	92	↗	↗	↗
	As-Sweida	9,333	1	30	92	↗	↗	↗		As-Sweida	1,829	75	183	65	↗	↗	↗
	Tartous	9,194	-3	32	73	↘	↗	↗		Tartous	1,097	-7	-12	-2	↘	↘	↘
Chickpeas (kg)	Aleppo	2,997	-2	33	60	↘	↗	↗	Fish (tuna, canned) - 160 gm	Aleppo	3,357	7	69	112	↗	↗	↗
	Damascus	4,519	11	44	181	↗	↗	↗		Damascus	4,900	9	107	139	↗	↗	↗
	Dar'a	3,722	-2	28	163	↘	↗	↗		Dar'a	3,796	1	58	105	↗	↗	↗
	Deir-ez-Zor	2,878	5	62	93	↗	↗	↗		Deir-ez-Zor	2,945	6	45	58	↗	↗	↗
	Hama	4,365	8	38	113	↗	↗	↗		Hama	4,360	-0.1	73	72	↘	↗	↗
	Al-Hasakeh	3,294	-	65	85	↔	↗	↗		Al-Hasakeh	2,673	-0.1	-27	25	↘	↘	↗
	Homs	4,140	2	33	105	↗	↗	↗		Homs	4,488	-2	79	78	↘	↗	↗
	Idleb	3,016	14	37	84	↗	↗	↗		Idleb	3,072	9	49	66	↗	↗	↗
	Lattakia	3,819	-10	13	100	↘	↗	↗		Lattakia	4,515	-8	55	105	↘	↗	↗
	Quneitra	3,813	0.1	14	175	↗	↗	↗		Quneitra	4,006	9	69	118	↗	↗	↗
	Ar-Raqqa	5,000	-	40	194	↔	↗	↗		Ar-Raqqa	3,163	5	31	66	↗	↗	↗
	Rural Damascus	4,531	13	67	175	↗	↗	↗		Rural Damascus	5,000	-14	102	136	↗	↗	↗
	As-Sweida	3,729	0.1	29	111	↗											

Commodity	Governorate	Current Price	Price change 1M (%)	Price change 6 M (%)	Price change 12 M (%)	Average Change 1M	Average Change 6 M	Average Change 12 M	Commodity	Governorate	Current Price	Price change 1M (%)	Price change 6 M (%)	Price change 12 M (%)	Average Change 1M	Average Change 6 M	Average Change 12 M
Iodised salt (kg)	Aleppo	955	2	24	69	↗	↗	↗	Sheep 2Y old Male (head)	Aleppo	505,423	8	-7	46	↗	↘	↗
	Damascus	775	1	78	132	↗	↗	↗		Damascus	520,028	15	0.2	25	↗	↗	↗
	Dar'a	776	7	32	129	↗	↗	↗		Dar'a	533,385	4	4	45	↗	↗	↗
	Deir-ez-Zor	400	-	37	33	↔	↗	↗		Deir-ez-Zor	393,452	-7	-12	2	↘	↘	↗
	Hama	733	-13	-2	-3	↘	↘	↘		Hama	516,250	16	-1	30	↗	↘	↗
	Al-Hasakeh	617	5	-19	54	↗	↘	↗		Al-Hasakeh	456,250	1	30	1.4	↗	↗	↗
	Homs	867	-11	-5	16	↘	↘	↗		Homs	484,952	9	-20	22	↗	↘	↗
	Idleb	523	-14	15	8	↘	↗	↗		Idleb	461,503	5	-20	14	↗	↘	↗
	Lattakia	663	2	-4	26	↗	↘	↗		Lattakia	496,574	-6	22	28	↘	↗	↗
	Quneitra	500	7	32	29	↗	↗	↗		Quneitra	498,438	-4	-10	34	↘	↘	↗
	Ar-Raqqa	893	2	18	133	↗	↗	↗		Ar-Raqqa	457,375	1	-4	-0.5	↗	↘	↘
	Rural Damascus	620	0.5	47	54	↗	↗	↗		Rural Damascus	464,464	-12	-12	12	↘	↘	↗
	As-Sweida	1,000	2	15	179	↗	↗	↗		As-Sweida	487,500	-1	5	6	↘	↗	↗
Tartous	906	-6	-5	35	↘	↘	↗	Tartous	682,639	3	69	76	↗	↗	↗		
Red split lentils (kg)	Aleppo	4,551	2	70	105	↗	↗	↗	Sugar (kg)	Aleppo	2,914	12	45	76	↗	↗	↗
	Damascus	4,828	7	59	167	↗	↗	↗		Damascus	2,908	12	42	81	↗	↗	↗
	Dar'a	4,594	11	78	249	↗	↗	↗		Dar'a	2,723	1	29	72	↗	↗	↗
	Deir-ez-Zor	3,903	6	113	117	↗	↗	↗		Deir-ez-Zor	2,909	8	39	77	↗	↗	↗
	Hama	5,188	16	88	144	↗	↗	↗		Hama	2,765	-	30	70	↔	↗	↗
	Al-Hasakeh	4,531	4	197	143	↗	↗	↗		Al-Hasakeh	3,204	31	128	86	↗	↗	↗
	Homs	4,380	1	53	103	↗	↗	↗		Homs	2,682	3	30	65	↗	↗	↗
	Idleb	4,165	3	71	88	↗	↗	↗		Idleb	3,042	13	43	60	↗	↗	↗
	Lattakia	4,647	1	59	120	↗	↗	↗		Lattakia	2,764	5	26	69	↗	↗	↗
	Quneitra	4,500	-	61	165	↔	↗	↗		Quneitra	2,654	3	29	68	↗	↗	↗
	Ar-Raqqa	5,108	1	28	137	↗	↗	↗		Ar-Raqqa	4,193	44	108	146	↗	↗	↗
	Rural Damascus	4,817	7	68	142	↗	↗	↗		Rural Damascus	2,826	8	38	69	↗	↗	↗
	As-Sweida	4,142	3	49	121	↗	↗	↗		As-Sweida	2,627	1	26	57	↗	↗	↗
Tartous	4,242	13	63	99	↗	↗	↗	Tartous	3,000	-	59	89	↔	↗	↗		
Meat (beef, kg)	Aleppo	22,350	5	7	53	↗	↗	↗	Tomato (kg)	Aleppo	1,680	45	190	56	↗	↗	↗
	Damascus	22,986	-1	4	40	↘	↗	↗		Damascus	1,606	50	91	75	↗	↗	↗
	Dar'a	19,750	-	2	41	↔	↗	↗		Dar'a	1,638	119	178	66	↗	↗	↗
	Deir-ez-Zor	17,033	-1	5	34	↘	↗	↗		Deir-ez-Zor	1,358	45	112	30	↗	↗	↗
	Hama	21,533	-	10	40	↔	↗	↗		Hama	1,540	67	118	12	↗	↗	↗
	Al-Hasakeh	18,188	-0.6	1	19	↘	↗	↗		Al-Hasakeh	2,171	13	133	69	↗	↗	↗
	Homs	22,625	8	15	47	↗	↗	↗		Homs	1,377	33	96	0.1	↗	↗	↗
	Idleb	15,591	22	-20	5	↗	↘	↗		Idleb	2,189	30	63	109	↗	↗	↗
	Lattakia	22,861	1.1	3	43	↗	↗	↗		Lattakia	1,217	31	38	6	↗	↗	↗
	Quneitra	20,000	5	-	43	↗	↔	↗		Quneitra	1,522	86	139	62	↗	↗	↗
	Ar-Raqqa	15,458	2	-0.3	45	↗	↘	↗		Ar-Raqqa	1,715	27	237	24	↗	↗	↗
	Rural Damascus	22,526	2	-36	38	↗	↘	↗		Rural Damascus	1,652	65	94	74	↗	↗	↗
	As-Sweida	20,000	-	-	45	↔	↔	↗		As-Sweida	1,424	61	86	31	↗	↗	↗
Tartous	29,014	17	64	91	↗	↗	↗	Tartous	1,331	5	-34	-1	↗	↘	↘		
White beans (kg)	Aleppo	6,644	1	40	47	↗	↗	↗	Unskilled Labor wage*	Aleppo	8,187	-2	26	87	↘	↗	↗
	Damascus	8,036	-4	23	45	↘	↗	↗		Damascus	16,611	44	63	132	↗	↗	↗
	Dar'a	8,164	-5	21	42	↘	↗	↗		Dar'a	8,479	1	35	82	↗	↗	↗
	Deir-ez-Zor	7,060	5	29	23	↗	↗	↗		Deir-ez-Zor	4,274	-1	-12	42	↘	↘	↗
	Hama	7,500	-6	33	12	↘	↗	↗		Hama	7,400	1	10	65	↗	↗	↗
	Al-Hasakeh	5,021	0.2	25	32	↗	↗	↗		Al-Hasakeh	7,958	-	37	59	↔	↗	↗
	Homs	8,318	-4	39	24	↘	↗	↗		Homs	8,476	-	28	90	↔	↗	↗
	Idleb	5,399	10	11	42	↗	↗	↗		Idleb	9,207	17	30	38	↗	↗	↗
	Lattakia	6,922	1	13	23	↗	↗	↗		Lattakia	15,333	4	111	111	↗	↗	↗
	Quneitra	7,250	1	29	267	↗	↗	↗		Quneitra	8,188	-	11	82	↔	↗	↗
	Ar-Raqqa	6,875	-3	56	56	↘	↗	↗		Ar-Raqqa	7,233	4	-14	48	↗	↘	↗
	Rural Damascus	8,282	-2	36	49	↘	↗	↗		Rural Damascus	16,940	41	77	139	↗	↗	↗
	As-Sweida	8,500	2	38	-	↗	↗	↔		As-Sweida	8,854	3	35	147	↗	↗	↗
Tartous	8,028	0.2	19	35	↗	↗	↗	Tartous	13,472	16	91	74	↗	↗	↗		
Vegetable oil (L)	Aleppo	7,669	-2	18	70	↘	↗	↗	Wheat Flour (kg)	Aleppo	2,530	6	34	98	↗	↗	↗
	Damascus	8,372	-4	12	67	↘	↗	↗		Damascus	2,461	0.5	29	80	↗	↗	↗
	Dar'a	9,236	-2	22	81	↘	↗	↗		Dar'a	2,411	1	21	87	↗	↗	↗
	Deir-ez-Zor	7,751	4	13	70	↗	↗	↗		Deir-ez-Zor	2,465	13	48	77	↗	↗	↗
	Hama	8,103	-8	9	56	↘	↗	↗		Hama	2,477	2	27	76	↗	↗	↗
	Al-Hasakeh	6,313	1	54	57	↗	↗	↗		Al-Hasakeh	2,296	-2	-12	74	↘	↘	↗
	Homs	8,380	-1	14	61	↘	↗	↗		Homs	2,505	-8	34	78	↘	↗	↗
	Idleb	7,198	1	24	90	↗	↗	↗		Idleb	2,294	3	47	98	↗	↗	↗
	Lattakia	8,697	2	21	64	↗	↗	↗		Lattakia	2,336	2	32	73	↗	↗	↗
	Quneitra	8,741	-4	17	77	↘	↗	↗		Quneitra	2,073	3	12	71	↗	↗	↗
	Ar-Raqqa	7,240	5	15	95	↗	↗	↗		Ar-Raqqa	2,000	-1	-	97	↘	↔	↗
	Rural Damascus	8,481	-4	12	68	↘	↗	↗		Rural Damascus	2,510	2	29	84	↗	↗	↗
	As-Sweida	8,850	-2	15	70	↘	↗	↗		As-Sweida	2,319	-1	13	45	↘	↗	↗
Tartous	9,347	-1	51	86	↘	↗	↗	Tartous	2,389	-6	37	86	↘	↗	↗		
Parsley (packet)	Aleppo	276	21	22	73	↗	↗	↗	Pasta (spaghetti)	Aleppo	4,868	-	34	98	↔	↗	↗
	Damascus	306	-0.5	47	116	↘	↗	↗		Damascus	4,386	5	35	161	↗	↗	↗
	Dar'a	395	4	70	129	↗	↗	↗		Dar'a	4,494	5	40	165	↗	↗	↗
	Deir-ez-Zor	294	2	70	53	↗	↗	↗		Deir-ez-Zor	3,517	11	26	200	↗	↗	↗
	Hama	245	18	39	38	↗	↗	↗		Hama	4,737	-2	38	159	↘	↗	↗
	Al-Hasakeh	631	-	94	216	↔	↗	↗		Al-Hasakeh	2,963	18	170	69	↗	↗	↗
	Homs	192	-11	-28	11	↘	↘	↗		Homs	6,036	7	46	228	↗	↗	↗
	Idleb	300	31	23	54	↗	↗	↗		Idleb	2,450	5	13	53	↗	↗	↗
	Lattakia	283	16	15	78	↗	↗	↗		Lattakia	4,881	1	82	88	↗	↗	↗
	Quneitra	375	3	54	150	↗	↗	↗		Quneitra	4,333	6	44	194	↗	↗	↗
	Ar-Raqqa	316	37	8	112	↗	↗	↗		Ar-Raqqa	2,735	37	60	47	↗	↗	↗
	Rural Damascus	289	-4	34	80	↘	↗	↗		Rural Damascus	3,983	-3	28	136	↘	↗	↗
	As-Sweida	249	1	24	121	↗	↗	↗		As-Sweida	4,192	0	28	118	↗	↗	↗
Tartous	281	29	-60	40	↗	↘	↗	Tartous	4,239	2	54	53	↗	↗	↗		
Rice (kg)	Aleppo	2,983	-1	14	47	↘	↗	↗	Yogurt (kg)	Aleppo	2,305	-2	40	46	↘	↗	↗
	Damascus	2,504	-2	13	44	↘	↗	↗		Damascus	2,245	-2	32	136	↘	↗	↗
	Dar'a	3,328	-3	20	60	↘	↗	↗		Dar'a	2,166	3	42	113	↗	↗	↗
	Deir-ez-Zor	2,738	1	21	67	↗	↗	↗		Deir-ez-Zor	1,371	2	44	83	↗	↗	↗
	Hama	2,525	0.5	2	48	↗	↗	↗		Hama	2,325	-7	45	86	↘	↗	↗
	Al-Hasakeh	2,815	2	54	45	↗	↗	↗		Al-Hasakeh	2,048	-2	37	91	↘	↗	↗
	Homs	2,654	3	-3	56	↗	↘	↗		Homs	1,946	-23	54	56	↘	↗	↗
	Idleb	3,052	8	32	80	↗	↗	↗		Idleb	2,369	12	40	47	↗	↗	↗
	Lattakia	2,786	-2	3	36	↘	↗	↗		Lattakia	2,000	3	30	74	↗	↗	↗
	Quneitra	3,210	-2	8	59	↘	↗	↗		Quneitra	2,100	2	28	188	↗	↗	↗
	Ar-Raqqa	2,698	4	28	17	↗	↗	↗		Ar-Raqqa	2,142	-1	84	67	↘	↗	↗
	Rural Damascus	2,558	1	10	47	↗	↗	↗		Rural Damascus	2,337	3	57	150	↗	↗	↗
	As-Sweida	2,744	-0.1	11	52	↘	↗	↗		As-Sweida	2,000	0.1	46	100	↗	↗	↗
Tartous	4,378	-2	108	118	↘	↗	↗	Tartous	1,983	-1	37	64	↘</				