



World Food Programme

SAVING LIVES  
CHANGING LIVES

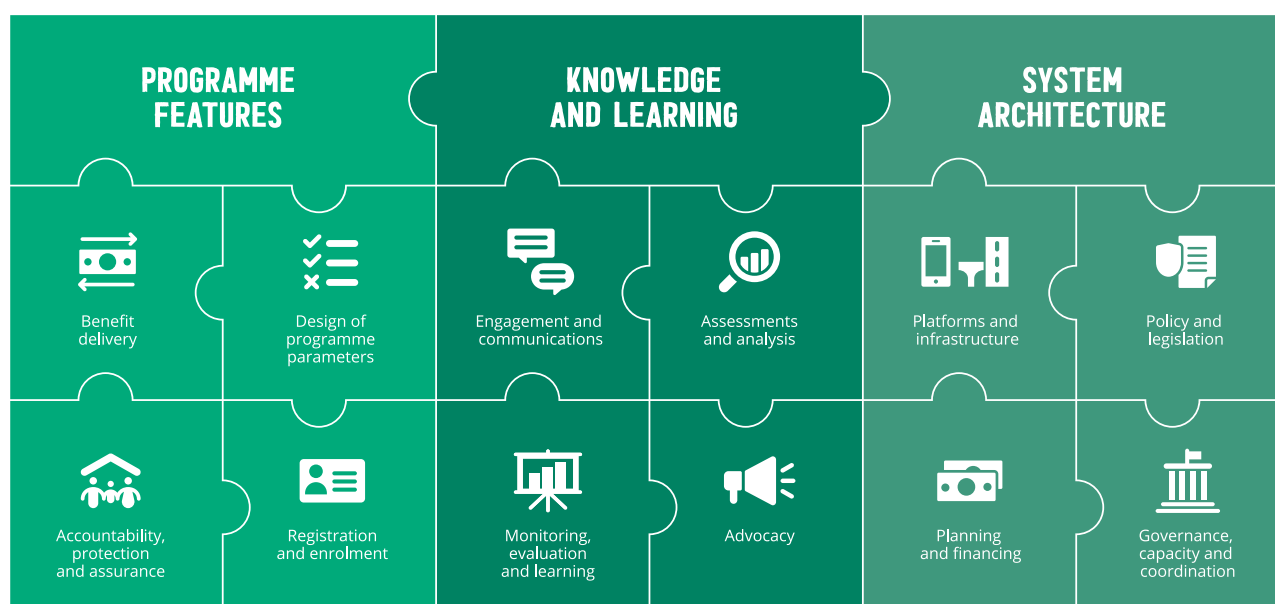
# WFP's support to national social protection in 2020

Social protection plays a vital role in the pursuit of a world with Zero Hunger. It prevents and protects people against poverty, vulnerability and social exclusion and supports individuals and households to manage and build resilience to shocks and stressors.

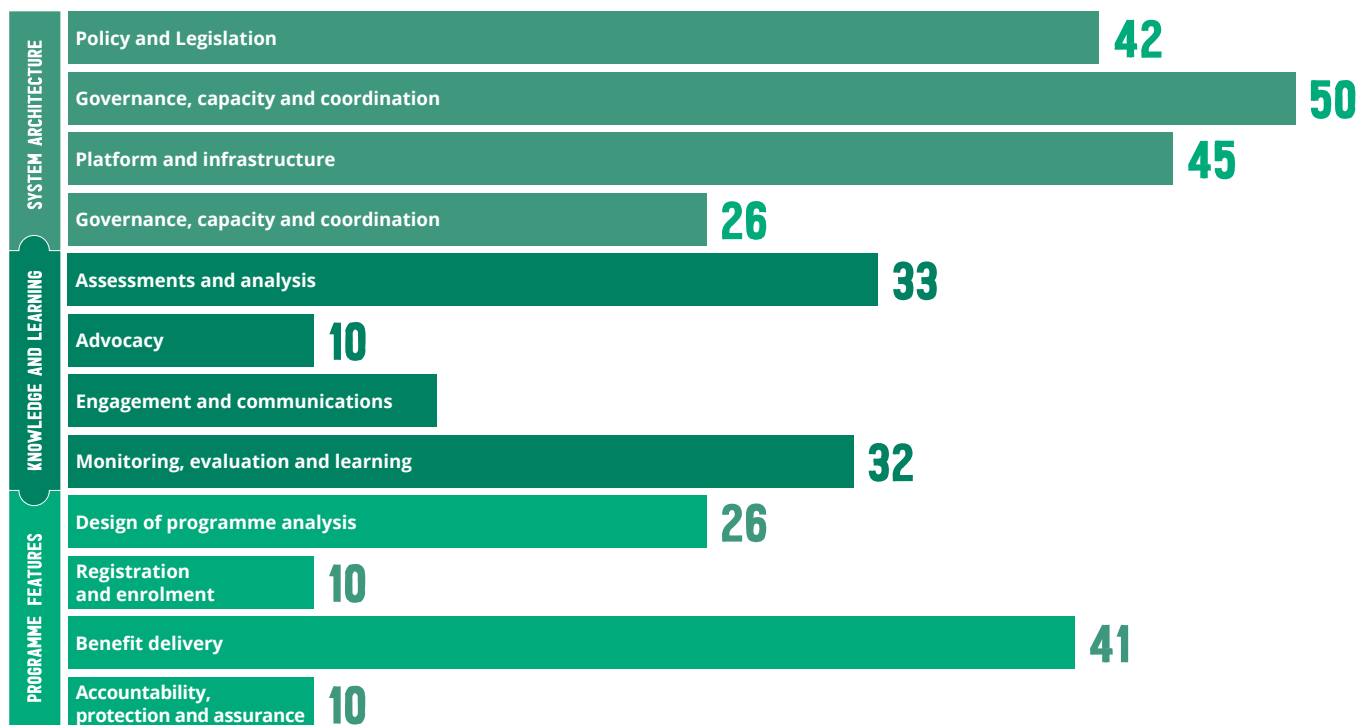
WFP provides support to national social protection systems as a means for people to meet food security, nutrition and other essential needs and manage risks, while WFP continues to deliver transfers directly for those in need. In 2020, WFP supported national social protection systems and programmes through technical advice, delivery on behalf of national actors and/or complementary actions in its own programming, in most of the countries where WFP operated.

For WFP, national social protection systems are constituted of 12 building blocks (shown below). Support to a social protection system means supporting the enabling environment that steers the sector as a whole (system architecture), the programmes that deliver services and support to the population (programme features) and/or cross-cutting processes of knowledge and learning.

Figure 1: Building blocks of a national social protection system



**Figure 2: Number of countries where WFP contributed to each of the 12 building blocks, through technical advice to national actors and/or delivery on their behalf**



The numbers showcased in this graph demonstrate the breadth and depth of WFP's global engagement in social protection<sup>1</sup>. They do not imply any prioritization of some building blocks over others, or that working on a

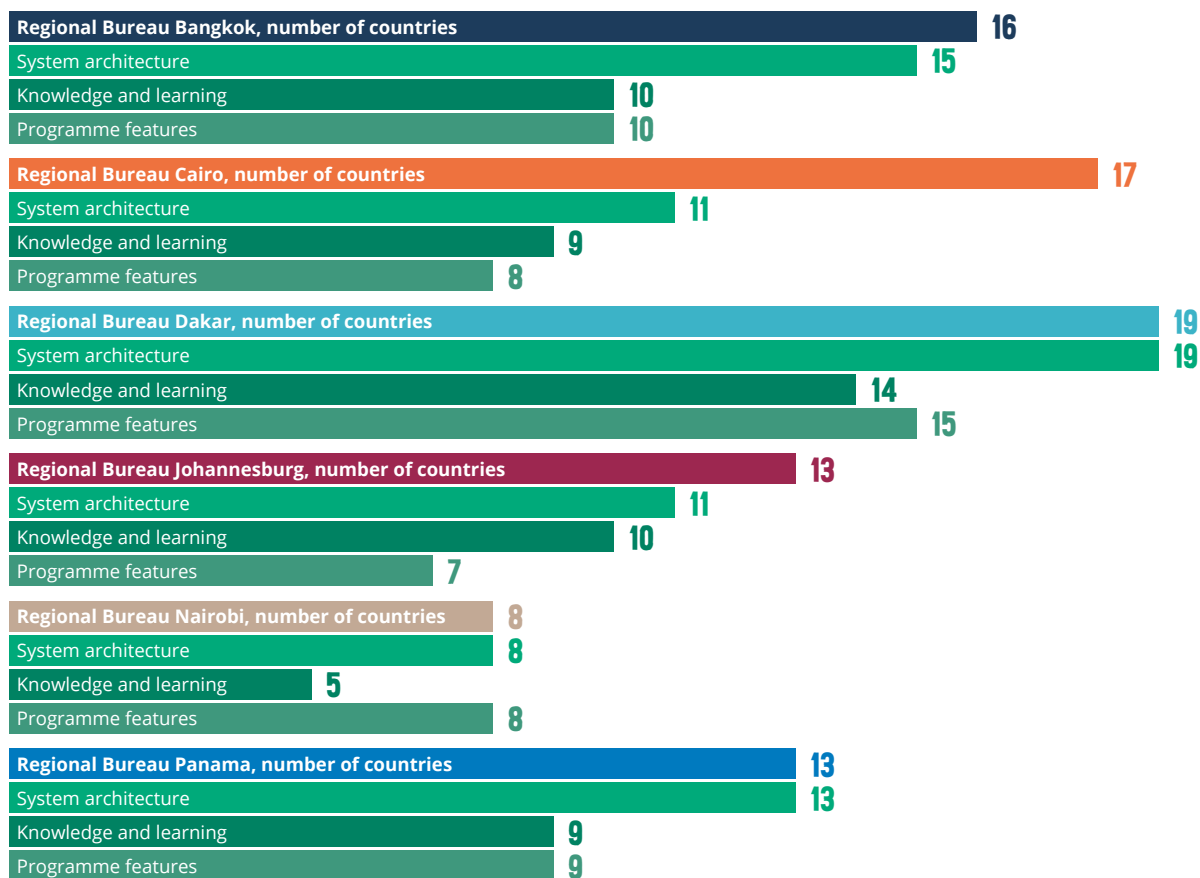
greater number of blocks is better than working on fewer. Rather, support is driven by national needs and priorities, identified in consultation with the government and its partners and set out in WFP's Country Strategic Plans.



1. The numbers in this brochure reflect WFP's ongoing global engagement in social protection and are greater than the number of countries where WFP has achieved long-term output targets or high-level targets, as described in the Corporate Results Framework.



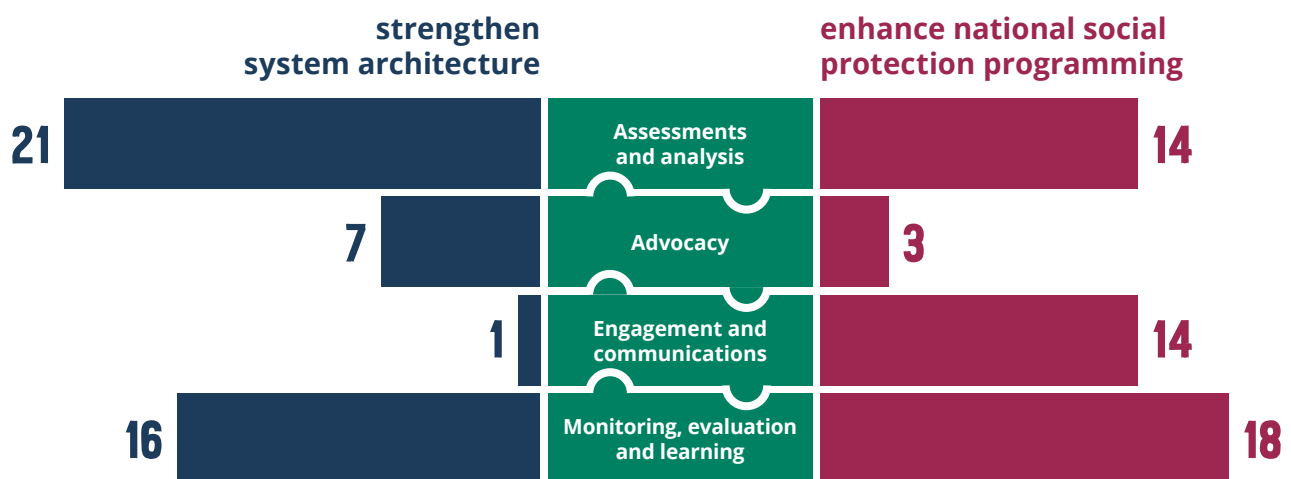
**Figure 3: Number of countries per regional bureau where WFP helped to strengthen system architecture, supported knowledge and learning, and enhanced the quality of national social protection programming, by providing technical advice to national actors and/or delivering on their behalf**



**Knowledge and learning can strengthen national social protection system architecture or enhance programming.** The figures below indicate the number of countries where WFP's knowledge and learning-related activities **helped strengthen national system architecture**, e.g. through supporting policy and

legislation, governance, capacity, and coordination, platforms or infrastructure, or planning and financing, **and helped enhance national programming (Figure #4)**, e.g. through supporting the design of programme parameters, registration and enrolment, benefit delivery, and accountability, protection, and assurance.

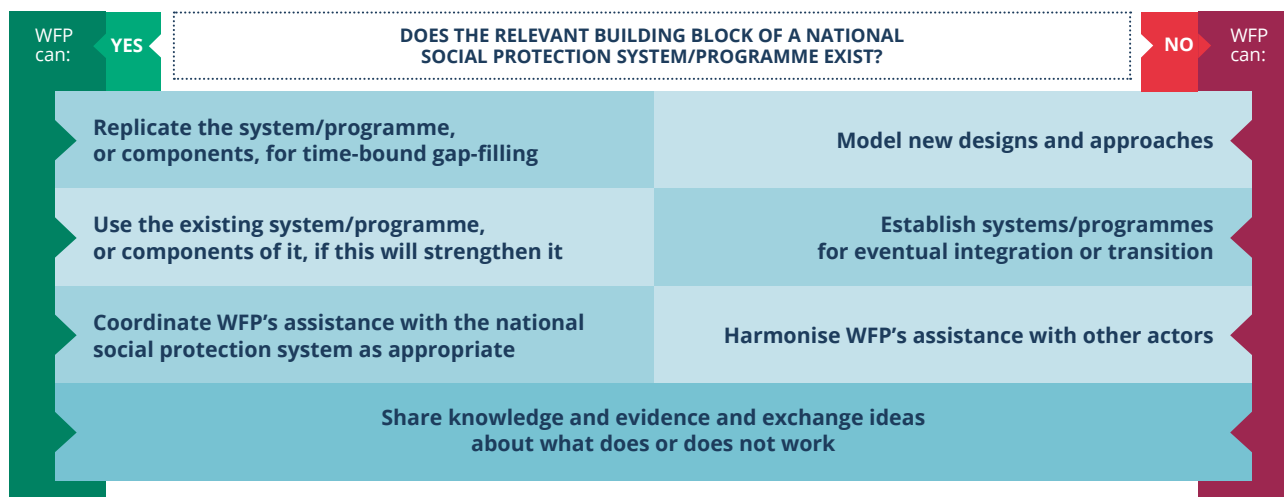
**Figure 4: Number of countries where WFP's supported national social protection knowledge and learning to:**



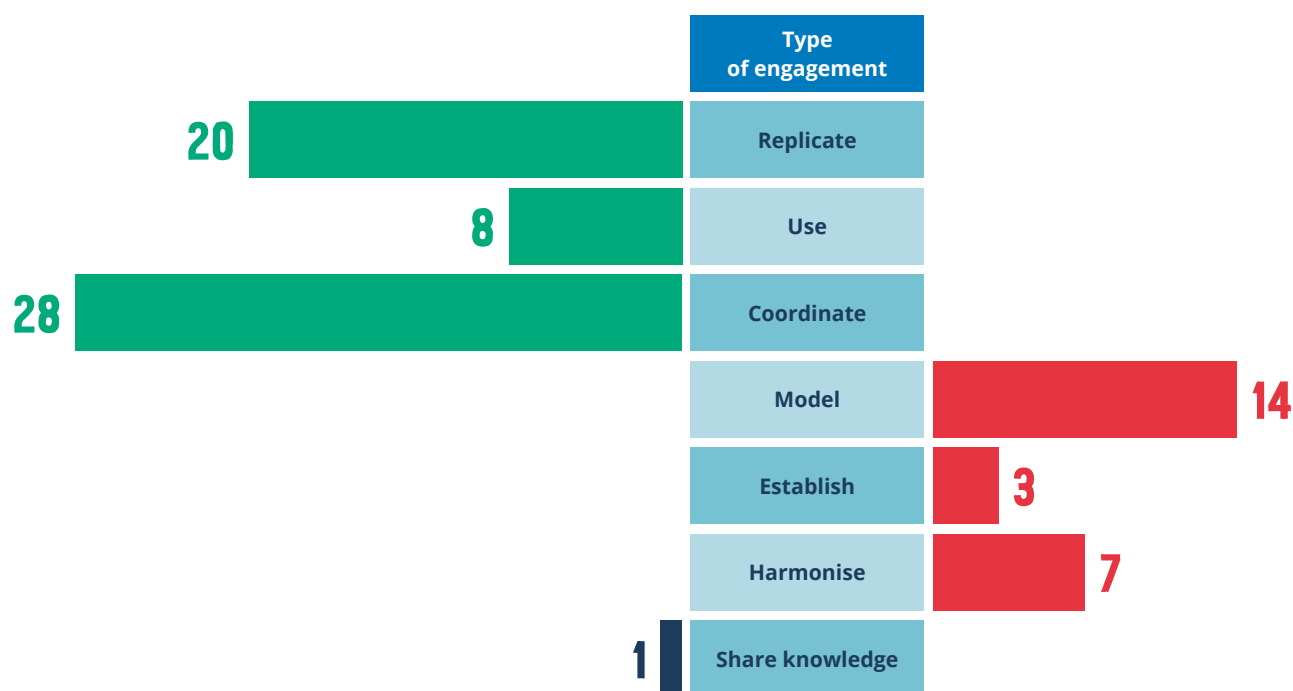
Many of WFP's directly implemented activities contain elements that mirror those of national social protection systems. This creates opportunities to explore complementarities between our interventions and those of national partners.

If a system/programme exists, WFP may seek to replicate it, for time-bound gap-filling; use parts of a system or programme for WFP's own delivery; or coordinate WFP's interventions with it. If it does not, WFP may model new approaches, establish elements of a system/programme for eventual integration; or harmonize with other actors. Sharing knowledge is relevant everywhere.

**Figure 5: Complementary actions in WFP's own programming**



**Figure 6: Number of countries where WFP contributed to national social protection through complementary actions in its own programming**



For further information, do get in touch with us at [socialprotection@wfp.org](mailto:socialprotection@wfp.org).

To know more about WFP's work in social protection, follow this link:  
[www.wfp.org/social-protection-and-safety-nets](http://www.wfp.org/social-protection-and-safety-nets)

### **World Food Programme**

Via Cesare Giulio Viola 68/70,  
00148 Rome, Italy  
T +39 06 65131 wfp.org

**Photo page 1:** WFP/Wahid Adnan

**Photo page 2:** WFP/Tsiori Andriantsoarana

**Photo page 3:** WFP/Angelo Mendoza

**Photo page 4:** WFP/Shehzad Noorani

