



World Food Programme

SAVING LIVES
CHANGING LIVES



Photo: WFP/Ziad Rizkallah

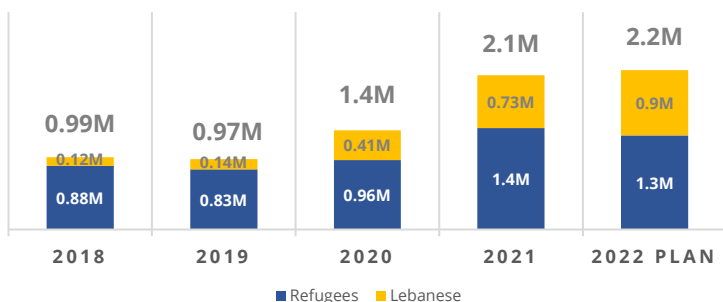
WFP LEBANON 2021 IN REVIEW

WFP significantly scaled up its assistance in 2021 to support one in three people living in Lebanon to put food on the table and make ends meet in a time of severe crisis.

Lebanon is facing its third year of a dramatic economic crisis, political paralysis, heightened social tensions, and the ongoing negative effects of COVID-19 and the 2020 Beirut port explosion. The human impact of these crises is sobering. In 2021, both the Lebanese and refugees suffered from high levels of poverty and food insecurity: 2.1 million Lebanese and 1.3 million Syrian refugees are vulnerable and in need of assistance.

In response, WFP supported 2.1 million of the most vulnerable Lebanese and refugees to meet their essential needs, including food, through cash transfers and in-kind food assistance. WFP also provided technical assistance, capacity strengthening support and logistics and procurement services to the Government and other partners to enable delivery of humanitarian and social assistance.

WFP BENEFICIARY REACH



2.1 MILLION
(54 percent)
LEBANESE ARE
VULNERABLE

46%
OF LEBANESE ARE
FOOD INSECURE



1.3 MILLION
(88 percent)
SYRIAN REFUGEES ARE
EXTREMELY POOR

50%
OF SYRIAN
REFUGEES ARE
FOOD INSECURE

Providing sufficient and sustained assistance is key to enabling people to meet their food and other essential needs. Increasing cash transfer values in September 2021 to adjust for inflation led to a significant improvement in both women and men's economic capacity to meet their essential needs, some improvements in acceptable food consumption levels, and reduced the use of consumption-based coping mechanisms. However, by the end of the year, transfer values still only provided about half of what beneficiaries need to meet their food needs, and even less for their other basic needs as inflation outpaced the increased transfer values. As a result, all assisted populations experienced a deterioration in their food security outcomes in 2021 compared to 2020. WFP will continue to advocate for the ability and resources to provide adequate levels of assistance to increasingly more vulnerable Lebanese and refugees.


WFP's assistance in 2021 acted as a safety net, keeping many Lebanese and refugees away from hunger and preventing them from falling into further poverty. This lifesaving assistance will be continued in 2022 along with continued advocacy and support towards strengthening national social safety nets. A major milestone towards this will be the implementation of the large-scale Emergency Social Safety Net programme together with the Government and the World Bank, alongside the scale-up of the National Poverty Targeting Programme and WFP's crisis response.



FOOD PRICES
IN DEC 2021
11x
PRE-CRISIS (OCT '19)

2021

2.1
MILLION
PEOPLE
ASSISTED

Activity	 2021 Beneficiaries	2022 Planned Beneficiaries
Food & Basic Assistance for Syrian Refugees	1,253,000	1,200,000
Food Assistance for Refugees of other Nationalities	38,000	8,000
Crisis Response for Lebanese <i>Including in-kind assistance and Beirut Blast response in 2021</i>	386,000	400,000
School Feeding <i>Including alternative take-home rations in 2021</i>	178,000	71,000
Livelihoods	77,000	62,000
National Poverty Targeting Programme (NPTP)	217,000	430,000

IN 2021



US\$ 239
MILLION
IN CASH
TRANSFERS



28,600MT
FOOD
DISTRIBUTED



7.7 MILLION LITRES OF FUEL DELIVERED TO
581 WATER AND HEALTH FACILITIES

FUNDING OVERVIEW



COUNTRY STRATEGIC PLAN
(2018 – 2022)
RESOURCE OVERVIEW

2021 RESOURCE
OVERVIEW

2022 RESOURCE
OVERVIEW

TOTAL REQUIREMENTS:
USD 2.88 BILLION

REQUIREMENTS:
USD 718 MILLION

REQUIREMENTS:
USD 814 MILLION

AVAILABLE RESOURCES: *
USD 1.69 BILLION

60%

AVAILABLE RESOURCES:
USD 560 MILLION

78%

AVAILABLE RESOURCES: *
USD 302 MILLION

37%

*As of 28 February 2022

MONA'S STORY



Photo: WFP/Giulio Origlia

Mona never expected she would need assistance to stay afloat. "Before COVID-19 and all that is happening, everything in Lebanon was somehow affordable," Mona tells us. "When we were informed that our family is eligible for aid, we immediately felt happy," Mona recalls. "No one could believe how glad I was. I've been hoping to get the WFP food e-card for a very long time." As she sneaks a quick glance at one of her children, rocking on his chair next to her, Mona says with a smile: "Children benefit the most when fed with nutritious food. Food keeps children healthy, protects them from diseases and helps them grow right in front of our eyes."

[\(READ MORE HERE\)](#)

WFP IS ABLE TO PROVIDE ASSISTANCE THANKS TO THE GENEROUS SUPPORT OF ITS DONORS

Australia | Belgium | Canada | Czech Republic | Estonia | European Commission | France | Germany | Ireland | Italy | Japan | Lebanon Humanitarian Fund | Lebanon's Presidency of the Council of Ministers | Netherlands | Norway | Private Donors | Republic of Korea | Switzerland | UN CERF | United Kingdom | USA