



World Food
Programme

SAVING
LIVES
CHANGING
LIVES

Seasonal Monitoring Update in Cambodia

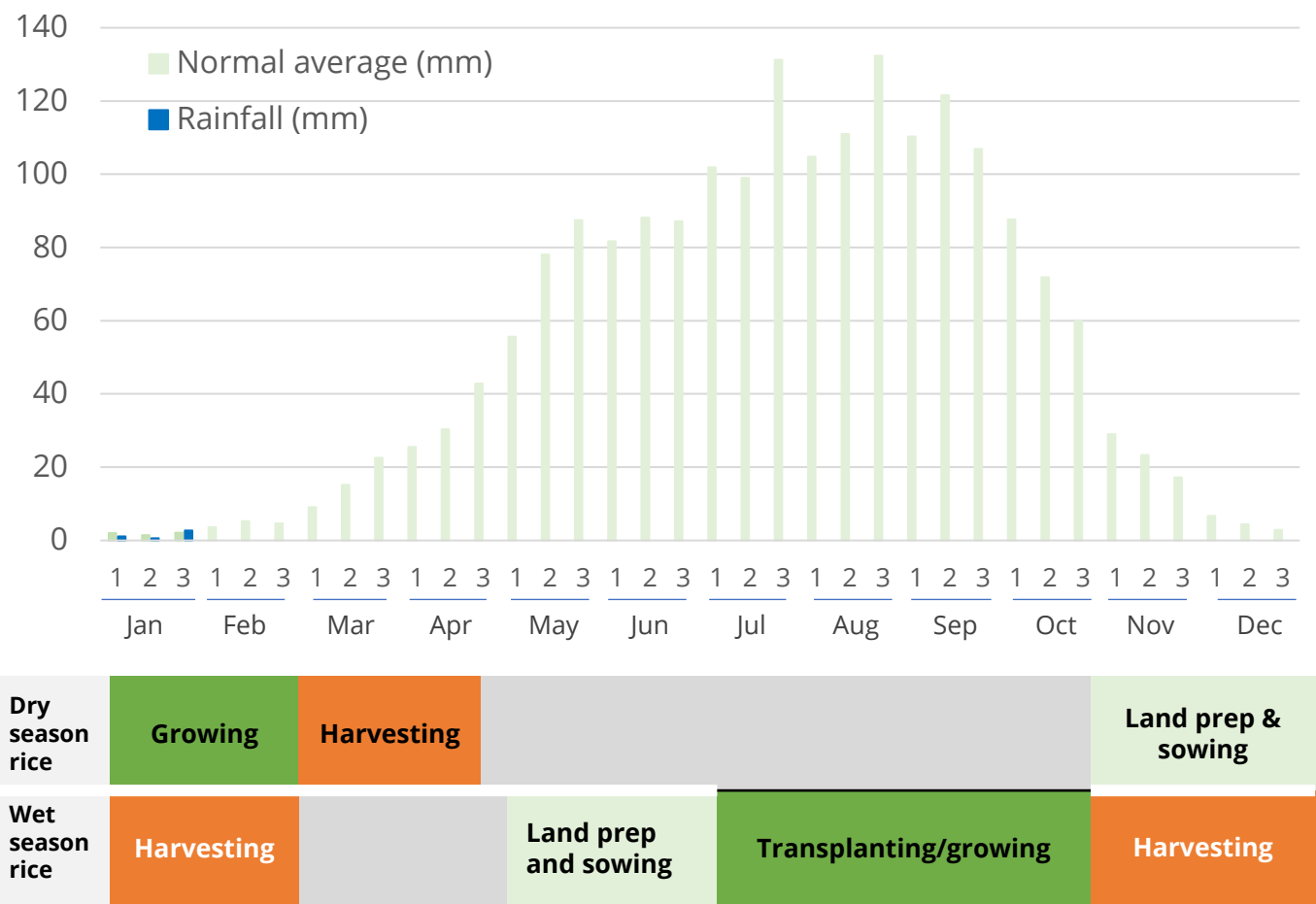
as of 16 February 2022

Vulnerability Analysis and Mapping (VAM) Unit

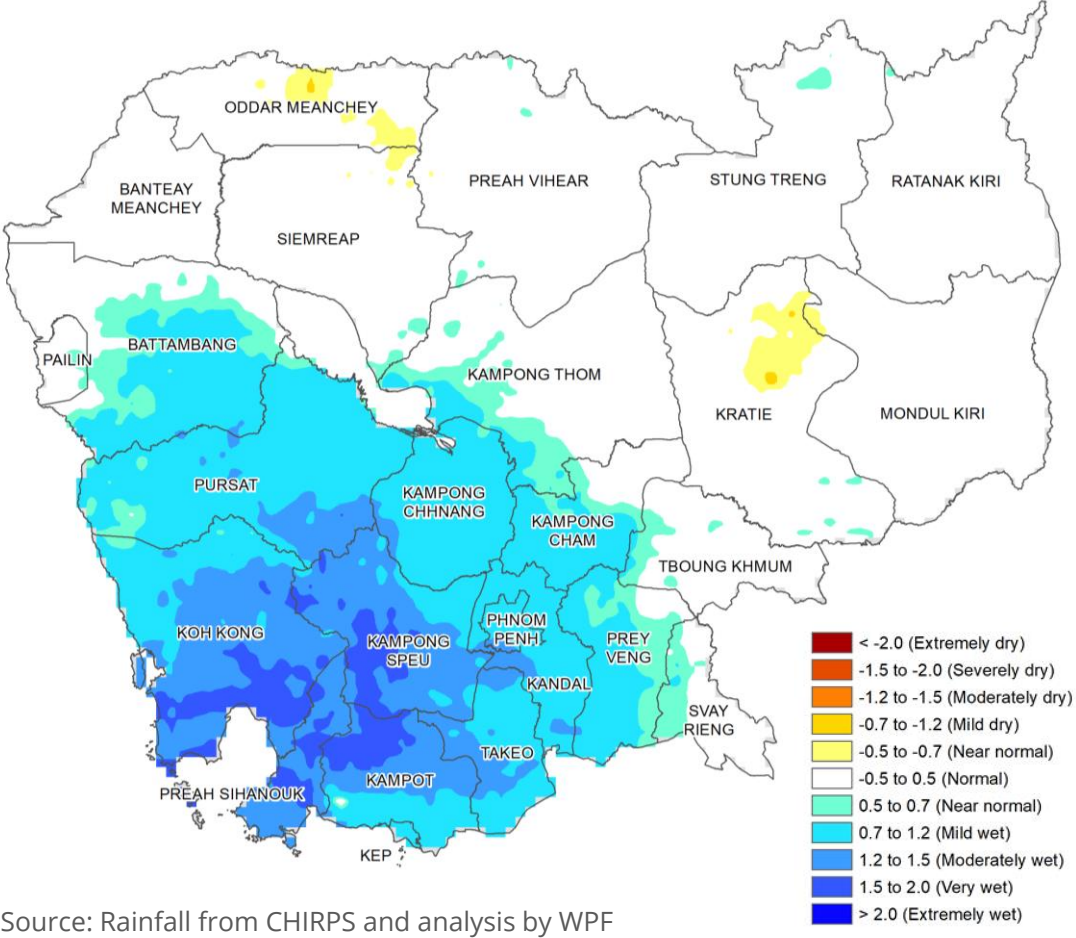
RAINFALL DISTRIBUTION

Rainfall during last 3 months (Nov – Jan 2022), was wetter than long-term average conditions over southwestern parts of the country (below map). Although, monthly national average rainfall in Jan 2022 was slightly lower than long-term average.

National Average Rainfall (As of Jan 2022) and Seasonal Crop Calendar



3-Month Standardized Precipitation Index (SPI-3) , Nov 2021 – Jan 2022

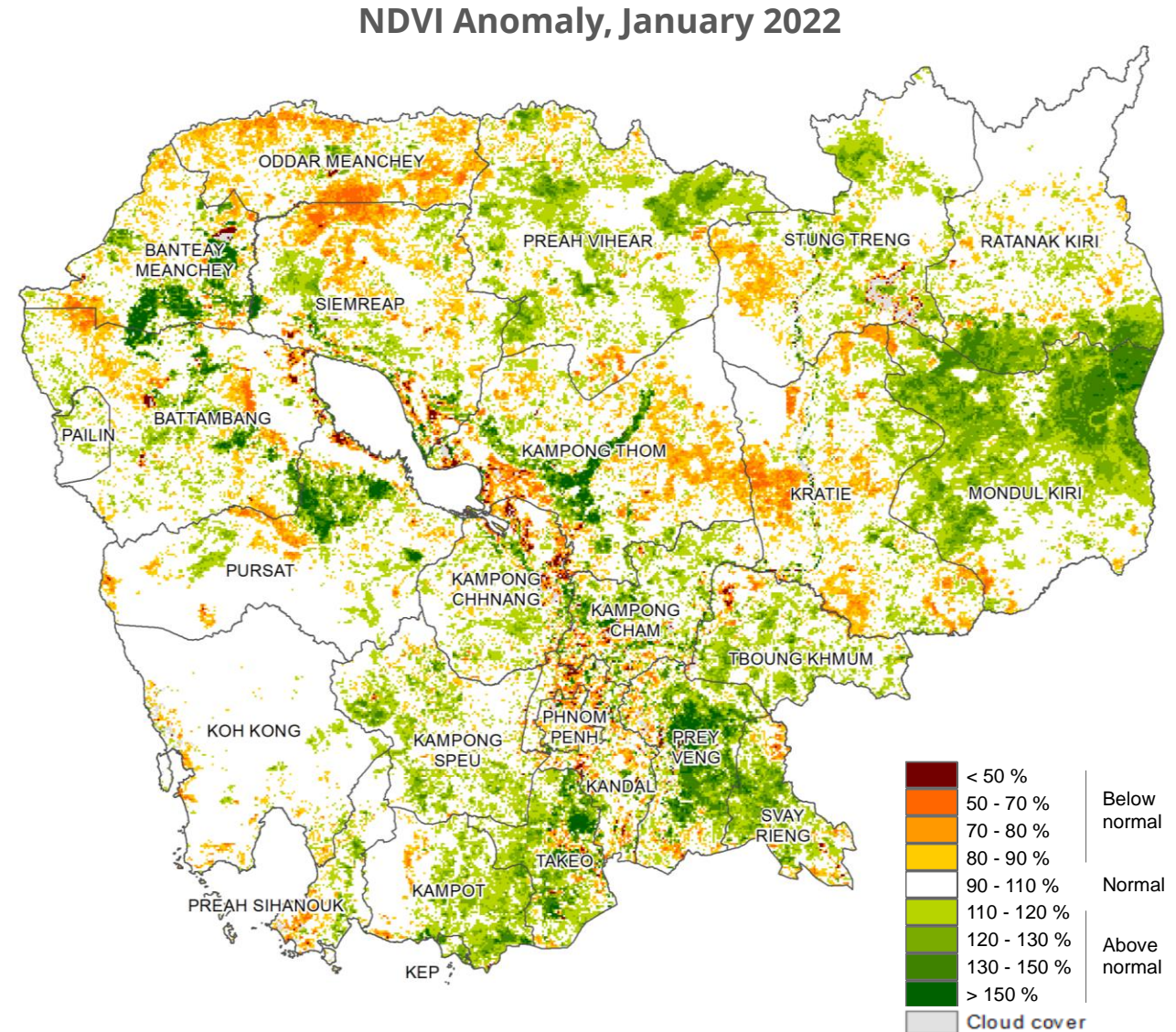


Source: Rainfall from CHIRPS and analysis by WPF

VEGETATION and CROP CONDITIONS

The wetter conditions in Nov – January 2022 provided favorable conditions for vegetation. In January 2022, normal to above long-term average conditions of vegetation were observed in most areas across the country; while vegetation in some parts of Otdar Meanchey, Siem Reap, Kampong Thom and Kratie experienced slightly/moderately below average conditions (map to the right).

According to MAFF, by December 2021, the production of wet-season paddy rice was 9.06 million MT which 10.2% higher than the last year. Cultivation areas of dry-season paddy, horticulture and industrial crops by December 2021 were 467,098 hectares (-5.8% compared to same period last year), 20,033 hectares (-17.4%) and 48,196 hectares (-9.7%), respectively.



RIVER WATER LEVEL

According to MRC reported on 14 Feb 2022, the water levels of all eight river monitoring stations in Cambodia remain at 'Normal' levels. In the coming week (15 – 21 Feb 2022), water level of the Mekong river from Stung Treng to Kratie are predicted to slightly increase, but from Kampong Cham to Neak Luong as well as Tonle Sap and Bassac rivers are likely to slightly decrease.

River Water Level Observed on 14 Feb and Forecast from 15 - 21 Feb 2022

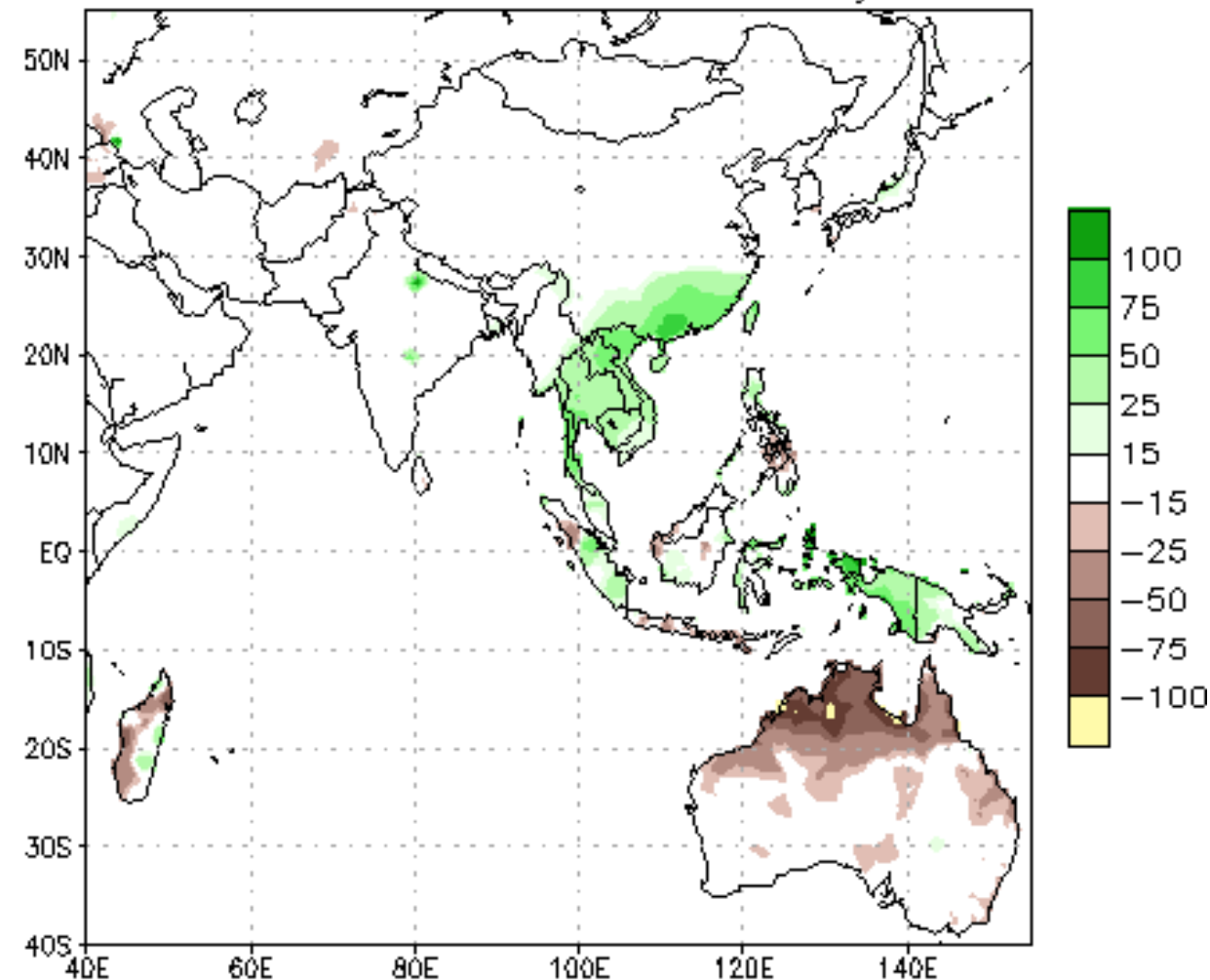
Location	Observed Rainfall (mm)	Zero gauge above M.S.L (m)	Min WL	Observed W. level against zero gauge(m)		Forecasted Water Levels (m)						
				13-02-2022	14-02-2022	15-02-2022	16-02-2022	17-02-2022	18-02-2022	19-02-2022	20-02-2022	21-02-2022
-	13-02-2022	-	-	13-02-2022	14-02-2022	15-02-2022	16-02-2022	17-02-2022	18-02-2022	19-02-2022	20-02-2022	21-02-2022
Stung Treng	nr	36.79	0.32	2.56	2.57	2.57	2.57	2.57	2.58	2.6	2.62	2.64
Kratie	nr	-1.08	3.06	7.04	7	7	7.01	7.01	7.01	7.02	7.04	7.06
Kompong Cham	nr	-0.93	0.65	2.74	2.72	2.69	2.67	2.65	2.63	2.61	2.6	2.6
Phnom Penh (Bassac)	nr	-1.02	1.58	2.29	2.23	2.21	2.18	2.16	2.14	2.12	2.1	2.09
Phnom Penh Port	-	0	0.14	1.31	1.25	1.23	1.2	1.18	1.16	1.14	1.12	1.11
Koh Khel	nr	-1	1.52	2.26	2.2	2.16	2.14	2.11	2.09	2.07	2.05	2.03
Neak Luong	9.8	-0.33	0.81	1.96	1.98	1.94	1.85	1.75	1.71	1.69	1.67	1.66
Prek Kdam	nr	0.08	0.58	1.32	1.27	1.23	1.19	1.16	1.13	1.1	1.07	1.04

SHORT-TERM FORECAST

MoWRAM (on 15 Feb 2022) forecasted that between 16 - 22 Feb 2022, low to moderate rainfall is expected in most of provinces except Kampong Thom, Kampong Chhnang, Pursat, Battambang, Banteay Meanchey and Pailin that are likely to receive higher rainfall.

Other sources also predict that whole country will receive normal to moderately higher than long-term average in the coming week (map to the right).

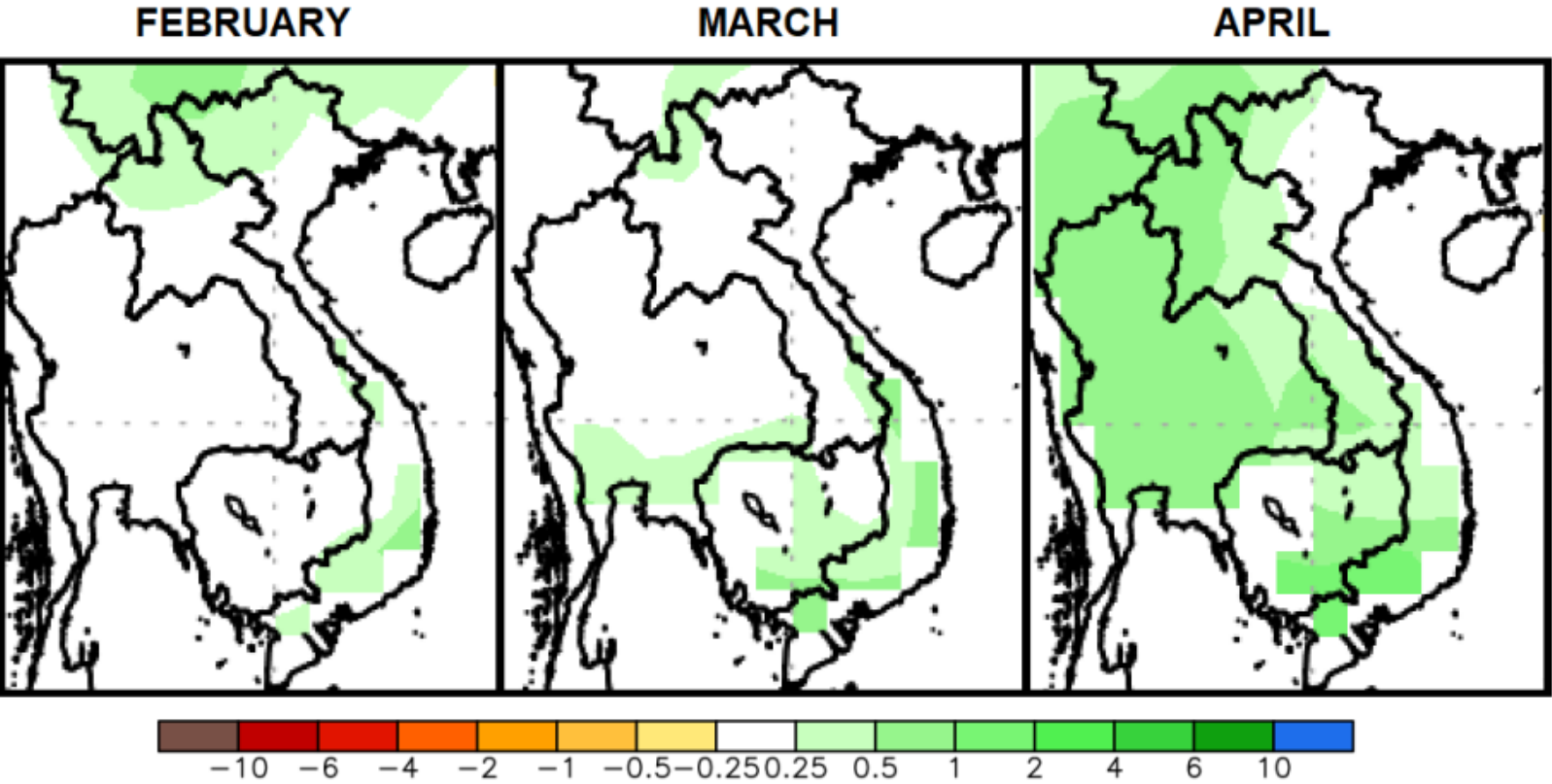
**7-Day Forecasted Rainfall Anomaly (mm)
from 16 – 22 Feb 2022**



SEASONAL OUTLOOK

Seasonal outlook information from MRC and MoWRAM's announcement on 02 Feb 2022 suggests that Cambodia will receive normal to above long-term average rainfall from Feb - Apr 2022. Wetter conditions are expected in the southern to northeastern parts (below maps). Rainy season in 2022 is likely to start in 1st week of May in Plain and Coastal areas and in 2nd week in Plateaus.

Daily average of monthly rainfall anomaly forecast from Feb to Apr 2022



THANK YOU

For more information:

Benjamin Scholz - benjamin.scholz@wfp.org

Yav Long - yav.long@wfp.org

Chanvibol Choeur - chanvibol.choeur@wfp.org

Vannareth - Huoy vannareth.huoy@wfp.org