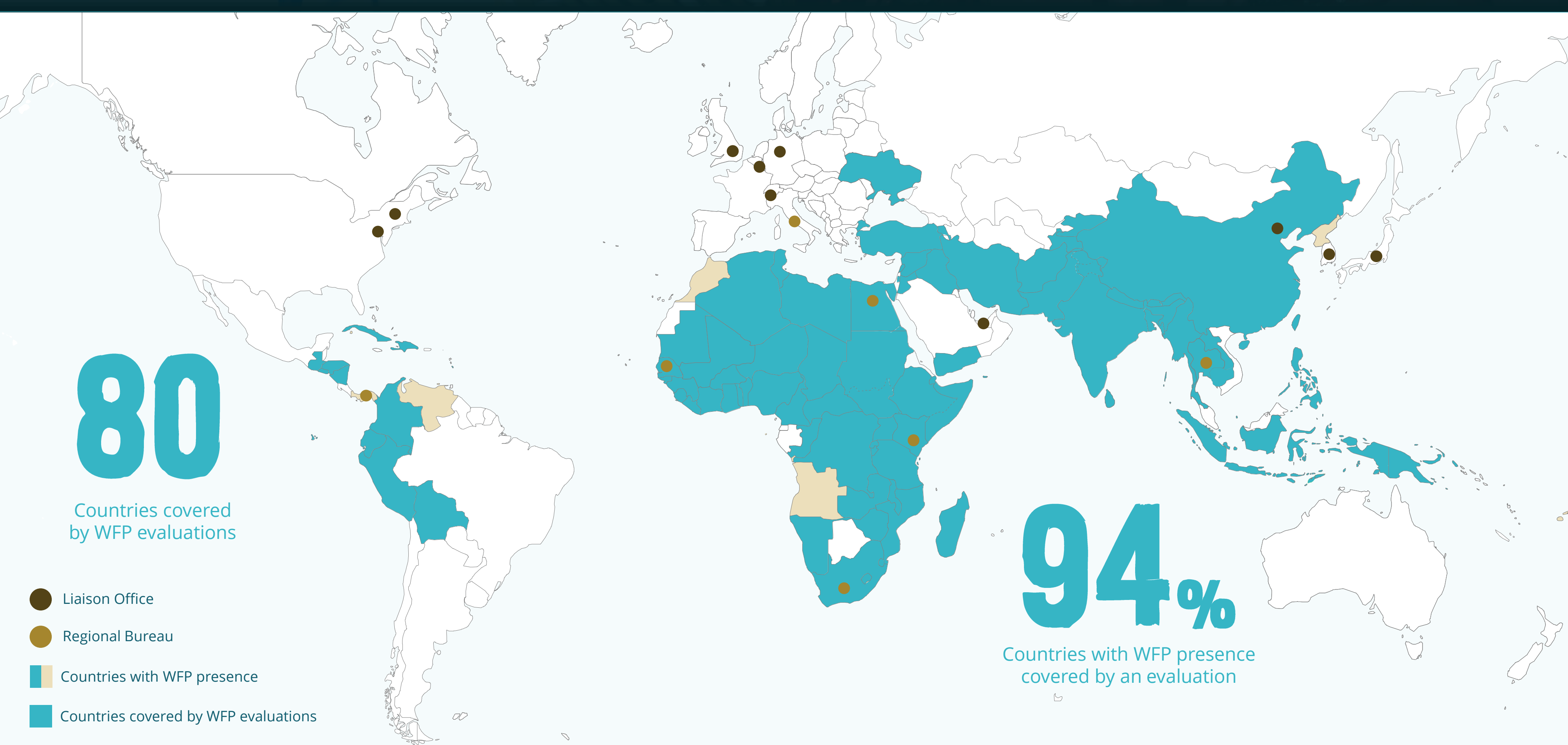


EVALUATION EVIDENCE

An overview of evaluations completed in 2016–2021, contributing to the strategic priorities of WFP



EVALUATION FUNCTION

An overview of progress towards the outcomes set out in the WFP Evaluation Policy (2016–2021)

EVALUATION COVERAGE

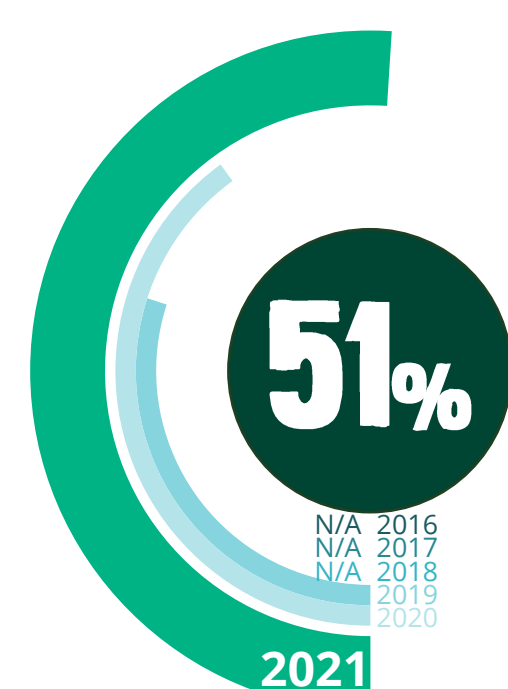
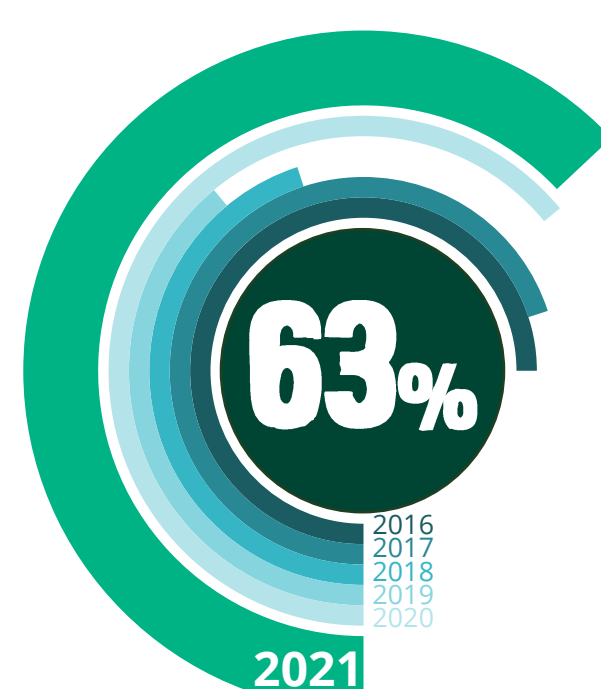
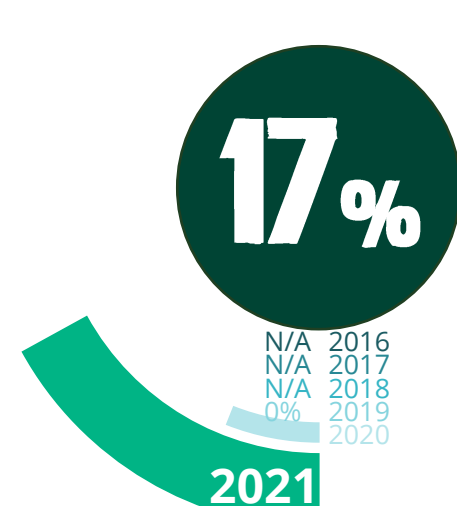
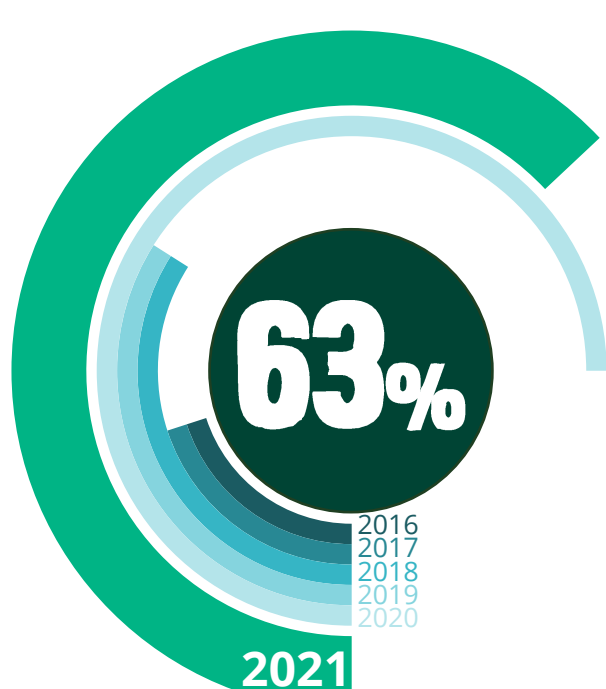
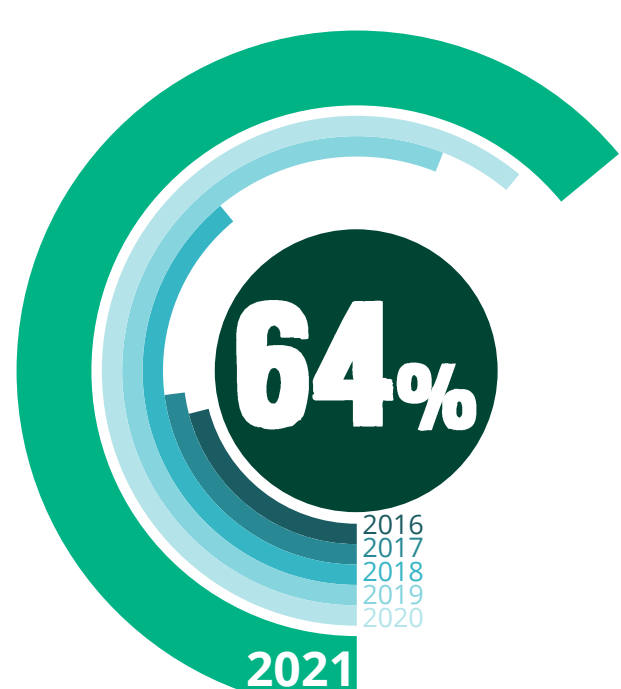
active policies

active policies within 4 to 6 years of implementation start

country strategic plans evaluated

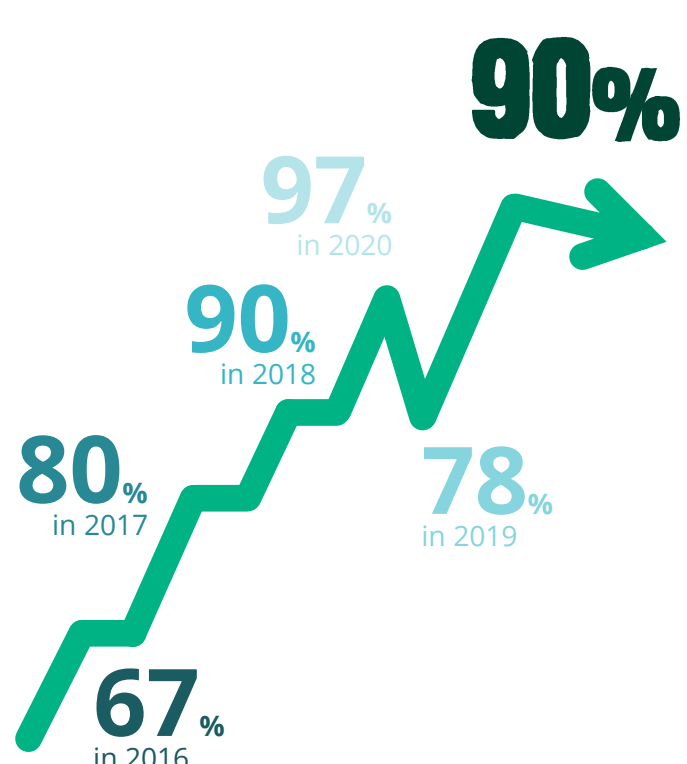
ongoing emergency responses evaluated within the previous 4 years

country offices that have completed at least 1 decentralized evaluation in their current CSP/ICSP cycle



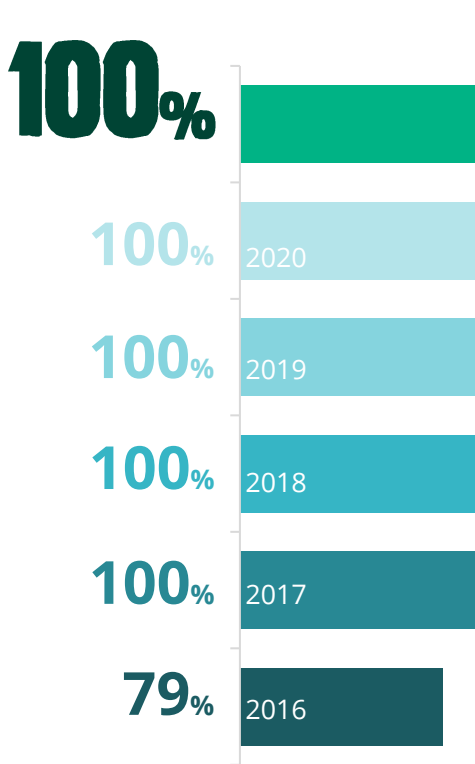
EVALUATION QUALITY

evaluation reports rated in PHQA as "meeting requirements" or higher

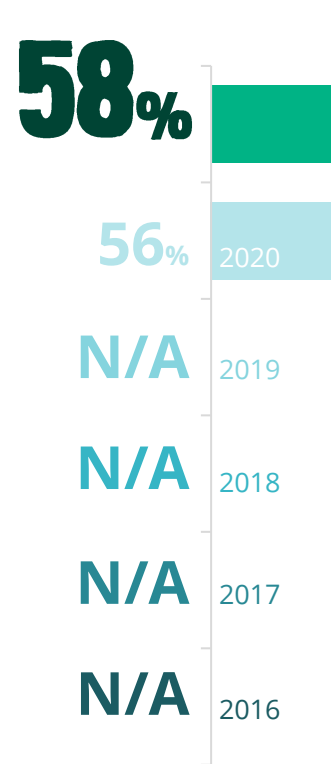


EVALUATION USE

Implementation status of actions within evaluation recommendations due for implementation

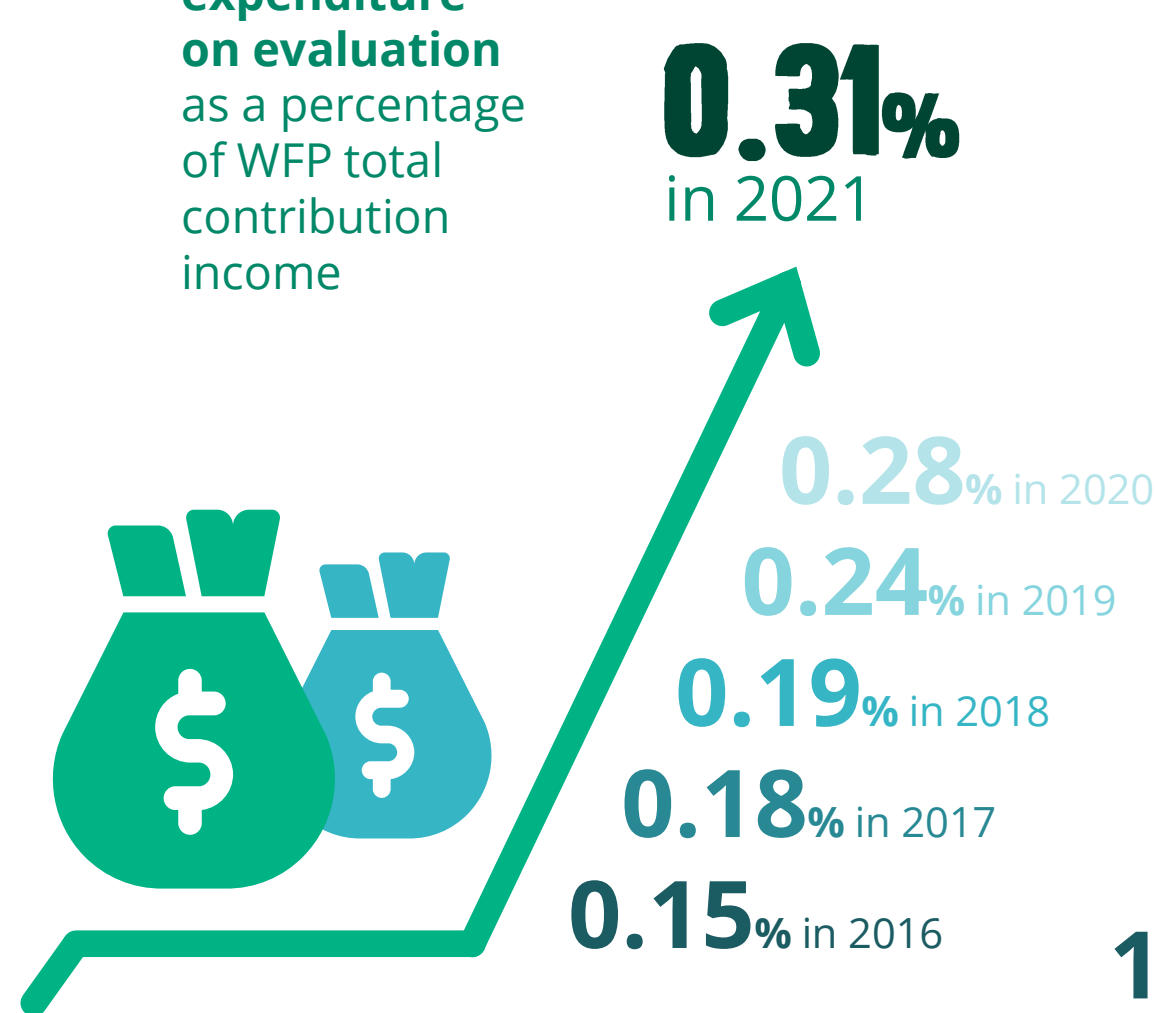


Implementation status of evaluation recommendations due for implementation



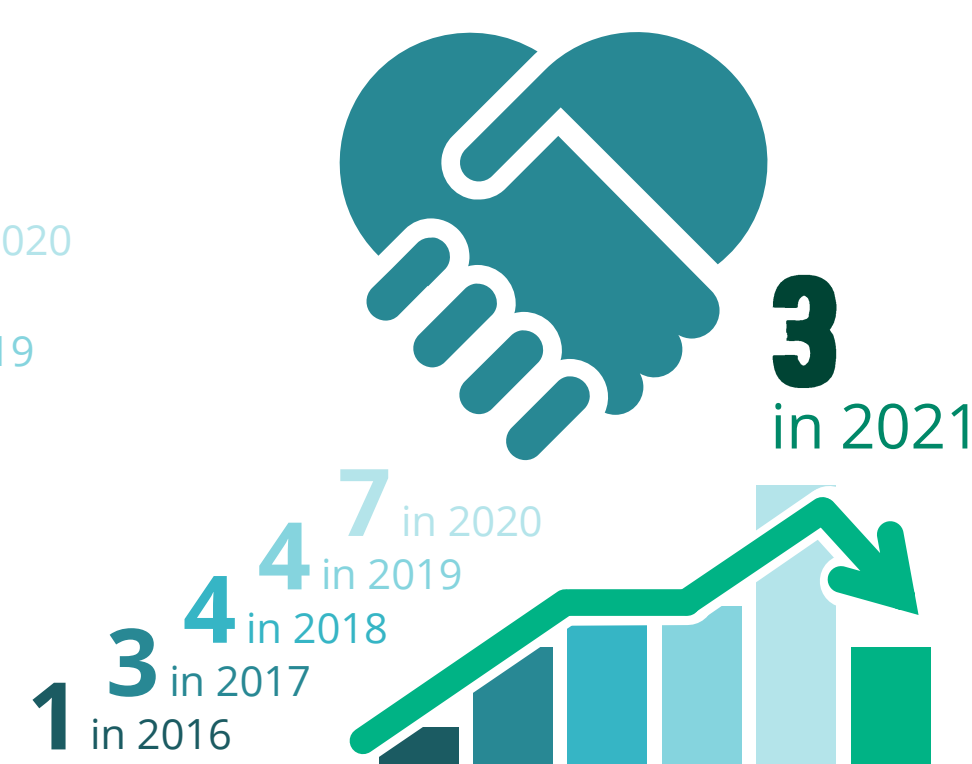
EVALUATION FUNDING

expenditure on evaluation as a percentage of WFP total contribution income



EVALUATION PARTNERSHIPS

joint and inter-agency humanitarian evaluations in which WFP participated



EVALUATION PLANNING

Building on achievements so far, WFP has identified key priorities for 2022 and beyond

Transition to the Evaluation Policy: update the Corporate and Regional Evaluation Strategies and the Charter

Ensure that evaluation evidence is systematically available and accessible to meet WFP and partner needs

Continue to deliver independent, credible and useful evaluations

Enhance capacity throughout WFP to commission, manage and use evaluations

Ensure that evaluation coverage is balanced and relevant for accountability and learning

Continue to strengthen partnerships in international and regional forums