



World Food Programme

SAVING LIVES
CHANGING LIVES

World Food Programme Eswatini 2021 Annual Country Report

2021 highlights



FULL REPORT

WFP reached **234,214** food insecure people through activities implemented to support shock-affected communities, smallholder farmers as well as people living with HIV.

672 smallholder farmers from 17 registered farmer cooperatives sold maize and beans to WFP providing diverse and nutritious meals to **24,392 children** in primary and secondary school.

Capacity strengthening support was also provided to the Government and non-governmental organisations (NGOs) for the generation, management and use of food security monitoring and analysis.

2021 ACHIEVEMENTS IN NUMBERS



234,214
total beneficiaries

Female
51%



Male
49%

4,485 mt



FOOD DISTRIBUTED

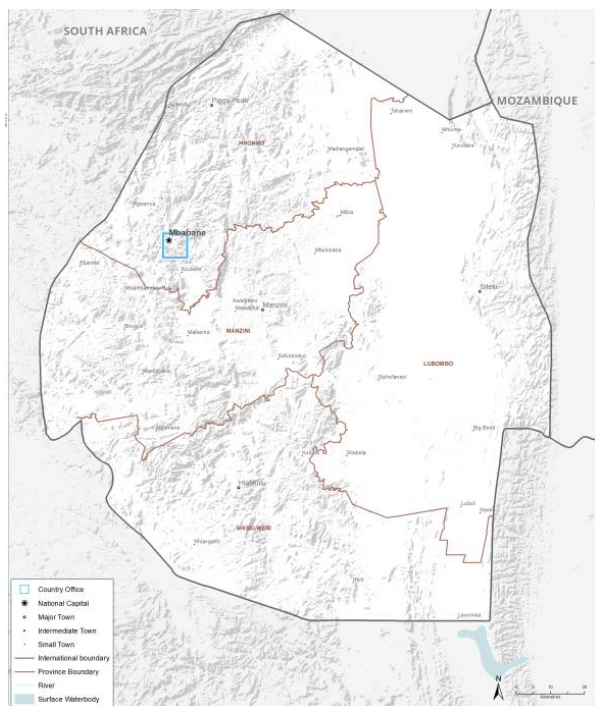
US\$ 3.8 m



CASH TRANSFERRED

■ planned ■ reached

LOCATIONS



13,000,000 USD received

17,700,000 USD planned

Cross cutting results



WFP continued to provide capacity-strengthening to Government entities and other cooperating partners on gender issues mostly conducted via trainings aimed at building their knowledge, skills and integrating gender into their programmes.



WFP worked to strengthen partners' awareness of gender-based violence (GBV) and prevention of sexual exploitation and abuse (PSEA) protocols and continued to build that knowledge at the community level, to ensure a better and broader understanding of referral pathways.



WFP introduced climate-smart farming practices under its livelihood support programmes, also supported the government to finalise a national climate adaptation strategy and design a funding framework as part of a pitch to the Global Environmental Facility

OUR PARTNERS

WFP supports the Government of Eswatini government institutions, UN agencies, civil society and faith based organisations, and private sector.

OUR DONORS

Japan, the European Union, ECHO, Germany, the United Kingdom, the Government of Eswatini, WFP's Strategic Resource Allocation Committee (SRAC) and UN agencies.

World Food Programme Eswatini

2021 Annual Country Report

Strategic outcome 1: Vulnerable populations in shock-affected areas are able to meet their basic food and nutrition needs during times of crisis



US\$ 3.8 m
cash transferred



1,681 people
received cash for assets



157,000 beneficiaries
unconditional transfers



WFP partnered with **World Vision**,
Save the Children and **ACAT** to
implement the crisis response in 2021



Strategic outcome 2: Smallholder farmers in Eswatini, particularly women, have enhanced capacities to sustainably produce and supply structured markets with nutritious foods by 2025



61.3% of smallholder
farmers were female

17 farmer groups
supported

510 neighbourhood
care points supported
to grow their own food

Two groups of women farmers
were supported with inputs such
as chicken coups, feed, chickens
etc. The eggs are supplied to
school for school meals

Strategic outcome 3: Vulnerable populations in Eswatini, particularly women, children, adolescent girls and people living with HIV, have access to integrated and shock-responsive social protection systems by 2030



Vegetables
provided to
schools through
Ministry of
Education



232 households with
people living with HIV
participated in
income-generating
livelihood activities



77,075 children
received cooked
school meals



260,000 people
reached through
sensitisations on HIV,
tuberculosis, sexual
reproductive health
and rights, and
nutrition

