



SAVING
LIVES
CHANGING
LIVES

WFP Khulna Sub-office

Khulna region is multi-hazard prone with frequent cyclones, high tidal surges, floods, riverbank erosion, prolonged waterlogging, sea level rise, salinity intrusion, heat waves and droughts.

Khulna sub-office has been operational since 2000 and covers 21 districts of three divisions in the southern part of Bangladesh, where most of the areas lie on the coastal belt and a few on char lands (river islands). Most of the associated islands of Khulna and Barishal divisions lie below 1 m from sea level; thus, this region is very frequent to tidal flooding, low-lying areas are flooded twice a day with tidal water, and most of the villages are going underwater faster than anticipated. Greater Faridpur districts are at high risk of flooding in the monsoon season associated with riverbank erosion.

Currently, operational programmes under Khulna sub-office are the Mother and Child Benefit Programme (MCBP), the Investment Component of Vulnerable Group Development (ICVGD) programme and the WFP-Euglena Private Partnership Project.

CAPACITY STRENGTHENING IN THE DESIGN OF SHOCK-RESPONSIVE SOCIAL SAFETY NET PROGRAMMES

Mother and Child Benefit Programme (MCBP), piloting as a “Learning Hub” in two sub-districts of two different divisions where local-level coordination and capacity support are facilitated to the Department of Women Affairs (DWA) and cooperating partners focusing on ‘Golden 1,000 Days’, critical window of opportunity to develop child’s long-term physical and cognitive development by reducing malnutrition risk.

The Investment Component for the Vulnerable Group Development (ICVGD) programme is prioritizing multi-dimensional human development activities for a Sustainable Livelihood Approach (SLA) along with nutritional support. WFP supports digital system improvement for beneficiary targeting and on the ground evidence generation.

11,135 mothers supported with cash and nutrition knowledge as part of Mother and Child Benefit Programme



Supported government ICVGD partners to reach 32,800 beneficiaries in 21 districts



6,000 mung bean farmers supported via training and agricultural skill enhancement



November 2022

PARTNERSHIP AND COORDINATION FOR IMPLEMENTATION AND LEARNING EXCHANGE

WFP-Euglena Private Partnership project is continuing under a partnership with a Japanese private business-oriented organization named **Euglena**, jointly managed by Khulna and Cox's Bazar office. The activities include capacity strengthening for mung bean farmers by providing training and agricultural skill enhancement for their livelihood upgradation; market linkage development; mung bean processing and warehouse management; and a food value chain establishment for Rohingya refugees through the retailers at the e-voucher outlets.

South-South and Triangular Cooperation (SSTC) is a learning exchange platform focusing on *SDG 17.6 (Partnership and Knowledge Sharing)* and was initiated to share the learnings of youth-led emergency preparedness and response actions of two similar disaster-prone countries. Khulna sub-office and Country Office along with government counterparts attended a most innovative Virtual Learning Exchange on Youth Engagement between the governments of Indonesia and Bangladesh under the banner of South-South and Triangular Cooperation.

EMERGENCY RESPONSE AND PREPAREDNESS

Emergency response is a prime task of Khulna sub-office in collaboration with government and stand-by NGO partners as multi-hazard affects the region frequently. Under emergency preparedness actions, staff update the Emergency Preparedness Response Plan (EPRP) tracker periodically with relevant information for emergency preparedness.

ACHIEVEMENTS

- With WFP technical support, the government scaled up the Mother and Child Benefit Programme in 22 sub-districts within 20 districts in 2022.
- WFP provided multi-dimensional Human Development training to the government officers at district and sub-district levels for effective implementation of the ICVGD programme.
- With WFP technical assistance, the government held ICVGD programme inception meetings with the stakeholders at the sub-district level.



- WFP worked with the relevant government institutions to strengthen collaboration to boost-up of mung beans cultivation.

WFP PLANS

- To enhance effective collaboration with the government and Euglena to implement project activity successfully.
- To support the Government in implementing social safety net programmes (MCBP, VWB, ICVGD).
- To support research and evidence creation for shock-responsive social safety net programmes (MCBP, VWB) in line with Government's National Social Security Strategy (NSSS).
- To actively engage in emergency response and emergency preparedness in collaboration with the government and NGO partners.

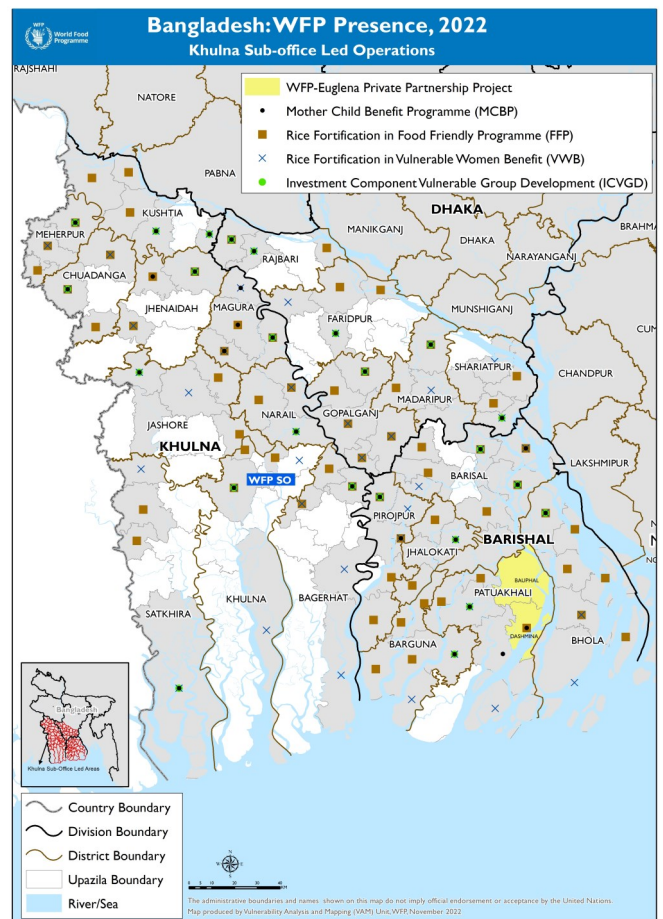


Photo (page 1): Focus group discussions ensure that WFP interventions, including its livelihoods programmes, are able to best serve the needs of participants (WFP/Shahi Imran).