



SAVING
LIVES
CHANGING
LIVES

WFP Rangpur Sub-office

A significant portion of this region experiences floods, riverbank erosion and cold wave each year, making people more vulnerable. 47.23 percent of people in the Rangpur division are below the upper poverty level, and Kurigram, the poorest district, falls under Integrated Food Security Phase Classification (IPC) level 4.

WFP Rangpur sub-office has been operational since 2000 and covers 16 districts of 2 divisions in the northern part of Bangladesh, 23 percent of the total area and population of the country. With an alluvial plain texture, this region passes water from a huge catchment area of China, India, and Nepal through more than 25 rivers.

Currently, Rangpur sub-office is implementing a pilot programme to enhance the resilience of the flood-affected community in an integrated approach - through Forecast Based Financing (FbF), Seasonal Livelihoods Programming (SLP) and Climate Risk Insurance (CRI) in the Kurigram district. Under the FbF, WFP provides disaster preparedness training to selected beneficiaries, disseminates floods early warning messages to the community and provides cash support for vulnerable people based on flood forecasts to ensure people are prepared for any disaster. At the same time, climate risk

insurance helps them recover losses after a disaster. Under SLP, cash grants along with Entrepreneurship Development Training (EDT) and Income Generating Activity (IGA) training enable vulnerable people to earn around the year, enhancing their resilience. WFP is also supporting the local level government stakeholders to implement the Mother and Child Benefit Programme (MCBP), Investment Component of Vulnerable Group Development (ICVGD) programme in 16 districts of Rangpur and Rajshahi divisions.

4,000
beneficiaries
provided cash support



1,000 people
participated
in drills in
4 Rangpur
districts

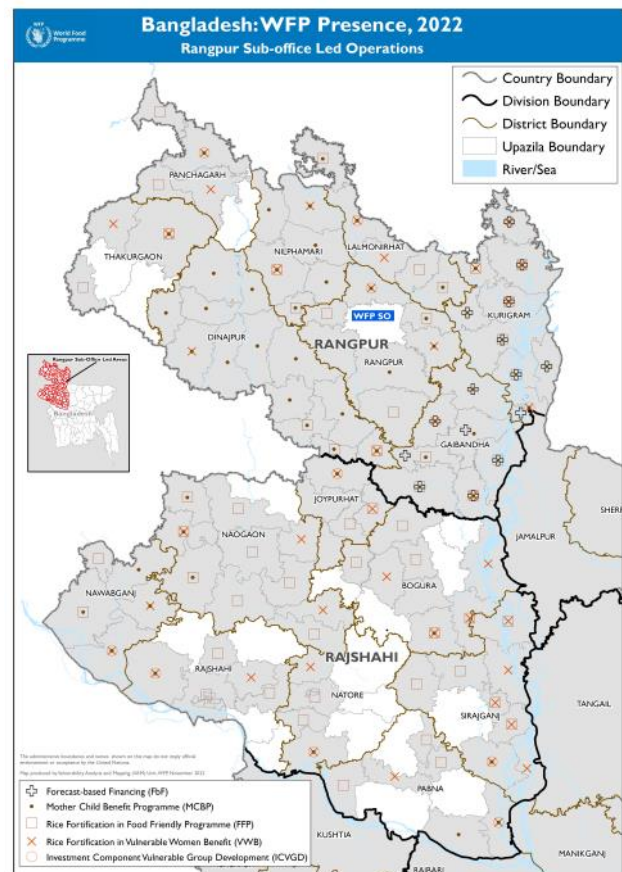


4,428 people
trained on FbF
early warning
message
dissemination



ACHIEVEMENTS

- WFP has updated a database of 73,000 vulnerable households in 4 flood-prone districts of Rangpur division to provide immediate support when flood trigger activates (i.e. floodwater raised 85 cm above the danger level and stays for three consecutive days).
- Under Building Resilience to Achieve Zero Hunger (BRAZH) project, WFP trained 53 disaster management committees about their roles and responsibilities in the Kurigram district.
- Under Seasonal Livelihood Programming (SLP), WFP provided skills training to 113 beneficiaries among the 4,000 flood-affected participants, focusing on coping strategies (e.g. hydroponic fodder cultivation, mushroom cultivation, pumpkin cultivation in barren riverbeds etc.)
- With WFP support, 4,000 households have registered under Climate Risk Insurance (CRI) programme and will receive pay out if their income and agricultural products are affected due to climate-related events.
- WFP supported local government officials on beneficiary enrolment and verification, organizing training and awareness campaigns for the Mother and Child Benefit programme (MCBP).
- Under Forecast Based Financing (FbF) project, WFP conducted orientation sessions for 187 members of the disaster management committee and awareness sessions for 420 communities on early warning and anticipatory action.
- WFP supported the ICVGD livelihood mapping exercise and joint assessment on effectiveness for VWB self-registration.



WFP PLANS

- To continue supporting ongoing government programmes and provide livelihoods training and integrated risk management support to vulnerable people strengthening disaster coping skills.
- To identify local needs and prepare a concept note for designing a targeted need-based programme.

Photo 1: Through the support of the Forecast Based Financing programme, Momena was able receive money to ensure her daughter had a safe shelter to study (WFP /Sayed Asif Mahmud).

