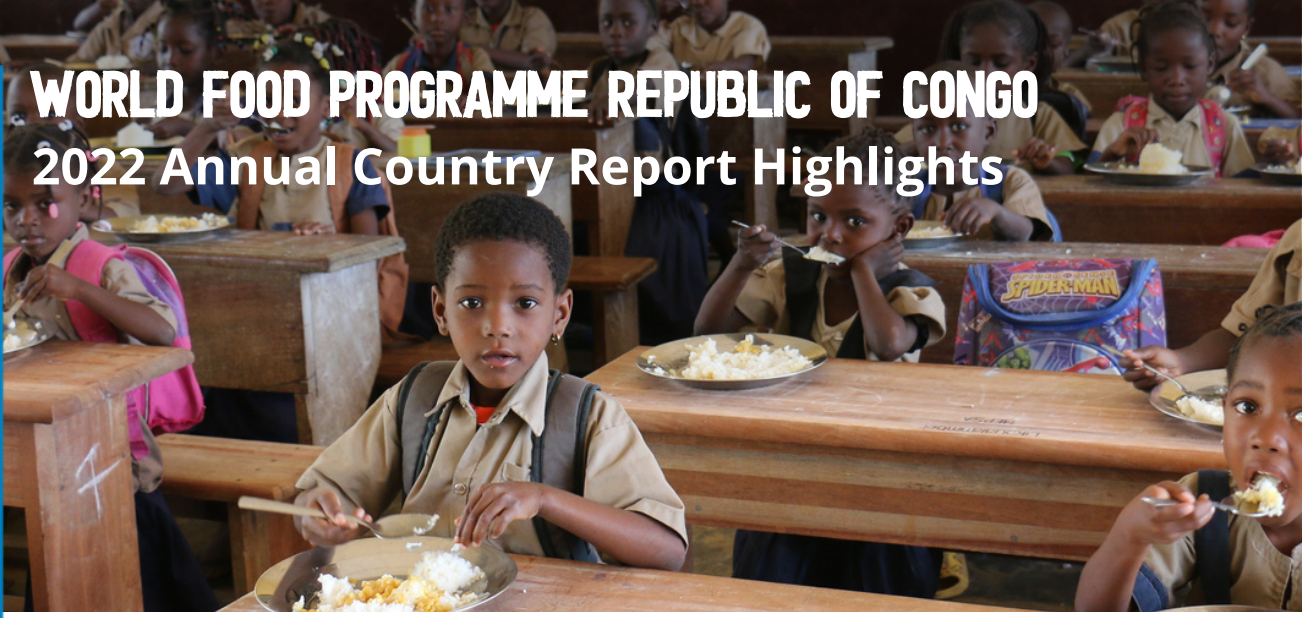




World Food Programme

SAVING LIVES  
CHANGING LIVES

# WORLD FOOD PROGRAMME REPUBLIC OF CONGO 2022 Annual Country Report Highlights



**384,500 PEOPLE ASSISTED**

WFP assisted 384,500 people in 2022. Among them, **58% were female.**



**USD 4.6 MILLION OF CASH TRANSFERRED**

WFP distributed USD 4.6 million in cash-based transfers to **126,100 people** across its activities.



**5,250 MT OF FOOD DISTRIBUTED**

WFP distributed 5,250 metric tons (mt) of food to **256,600 people** in emergency operations and school feeding.



**173,200 CHILDREN RECEIVED SCHOOL MEALS**

WFP provided school meals to 173,200 children through **532 public schools** across the country.



**24,200 REFUGEES ASSISTED**

WFP assisted 24,200 refugees and asylum-seekers through **in-kind, cash and nutrition assistance.**



**105,000 WOMEN AND CHILDREN RECEIVED NUTRITION SUPPORT**

WFP distributed specialised nutritious food to **46,600 pregnant and breastfeeding women** and **58,400 children aged 6-59 months.**

## CONTRIBUTIONS

100% of the funds needed were mobilised in 2022

[Full Annual Report](#)



## CROSS-CUTTING RESULTS



Affected populations accessed WFP assistance safely and with dignity, through information provision, consultations, and appropriate mechanisms for the communities to provide feedback or complaints. WFP established a new standard operating procedure for its hotline system, trained senior focal points on protection from sexual exploitation and abuse and refreshed staff knowledge on the highest standards of behaviour and ethics. [Read more.](#)



While women continue to face unequal challenges in the Republic of Congo, WFP endeavours to remain gender-responsive through the design and implementation of its activities, conscious of the synergies between Sustainable Development Goals 2 (Zero Hunger) and 5 (Gender Equality).

Women and girls represented most of WFP's beneficiaries in 2022 and, whenever possible, WFP prioritised women-led households for assistance, aiming for transformative outcomes that increase their decision-making power at household, community, and societal levels.

WFP supported the training of 151 health workers in gender-based violence prevention, in collaboration with the United Nations Population Fund. This intervention also set up a coordination system to enable the referral of gender-based violence victims to hospitals in the country's two largest cities. [Read more.](#)



Asset creation activities contributed to strengthened ecosystems by rehabilitating rural roads and transforming land into fields for growing beans, rice and peanuts. WFP engaged with indigenous populations to screen proposed activities in terms of sustainability, and social and environmental risks. WFP also conducted an environmental assessment of its facilities as a preliminary step to systematically identify and reduce environmental impacts from operations. [Read more.](#)

# WORLD FOOD PROGRAMME REPUBLIC OF CONGO

## 2022 Annual Country Report Highlights

**Strategic outcome 1:** Food insecure people affected by shocks have access to adequate food all year round



**217,000 vulnerable people reached** through food and nutrition emergency assistance



**30,900 people affected by the floods in early 2022** in the North received food and cash assistance



**3,100 mt of food distributed** as part of food and nutrition assistance

**Strategic outcome 2:** Equitable national social protection interventions effectively target vulnerable populations, including school-aged children, with sustained access to safe and nutritious food



**USD 441,300 transferred to school committees** to procure **locally available** nutritious food



**68 mt of salt** contributed by the Government of the **Republic of Congo**



**41% of assisted students** received a meal through the **Home-Grown School Feeding programme**

**Strategic outcome 3:** Targeted smallholder farmers and communities benefit from productive and sustainable livelihoods which support nutrition value chains



**1,700 smallholder farmers supported** with small equipment and technical support



**17 sheds delivered to farming groups** to improve food safety and storage



South-South Cooperation partnerships contributed to the **adoption of food safety standards**

**Strategic outcome 5\*:** National Humanitarian and development actors have access to WFP expertise



**12 UNHAS flights operated**, transporting 263 people and 12.3 mt of non-food items



**184 Central African refugees voluntarily repatriated** through UNHAS



**4,900 mt of food timely delivered** for emergency operations and school feeding

\* The fourth strategic outcome was replaced by strategic outcome 5 in February 2021 in line with the first budget revision of the Country Strategic Plan (2019-2024).



*With WFP's help, I created a cooperative with other women producers. We received trainings, machines and personal equipment. We were able to open bank accounts to save money and to expand our cassava fields. The project allowed us to reduce our debts, eat better and cover our medical expenses. We are very proud to collaborate with WFP!*

says 60-year-old Mizette, president of a cassava and peanut farming group in the Bouenza department.

[Watch her story.](#)

### PARTNERS

**Host Government** | Ministry of Agriculture, Livestock and Fishery; Ministry of Environment, Sustainable Development and the Congo Basin; Ministry of Health and Population; Ministry of Planning, Statistics and Regional Integration; Ministry of Pre-school, Primary and Secondary Education and Literacy; Ministry of Social Affairs, Solidarity and Humanitarian Action.

**Donors** | Adaptation Fund; China-IFAD South-South and Triangular Cooperation Facility; European Union; Germany; Global Partnership for Education; Japan; Joint SDG Fund; Mastercard; People's Republic of China; Republic of Congo; Sodexo Stop Hunger Foundation; United States of America.

To support the Congolese Government, WFP works along with multilateral and technical partners such as **United Nations agencies, non-governmental organisations** and the **academic sector**. [Read more.](#)