



World Food Programme

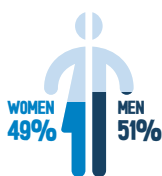
SAVING LIVES  
CHANGING LIVES

# WFP PHILIPPINES

## 2022 ANNUAL COUNTRY REPORT OVERVIEW

In 2022, the impact of compounded crises – including the **global food and energy crisis** and **climate change** – continued to challenge the food security and nutrition situation in the Philippines. Rising food prices, inflation, and multiple climate shocks - from strong typhoons to earthquakes - pushed back the country's progress in recovering from the impact of the COVID-19 pandemic. WFP supported over **365,000 people** to meet immediate humanitarian needs and strengthen resilience, mainly in areas affected by natural hazards and in the Bangsamoro region (BARMM). In parallel, **strengthening the government and partners' capacities** at national, regional, and local levels remained a top priority.

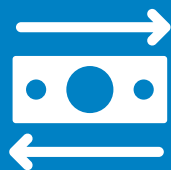
### IN NUMBERS



**1,135** MT OF FOOD  
distributed



**2,212** GOVERNMENT and  
NATIONAL PARTNER STAFF  
received technical assistance  
or training



USD **11.7** MILLION  
CASH transferred

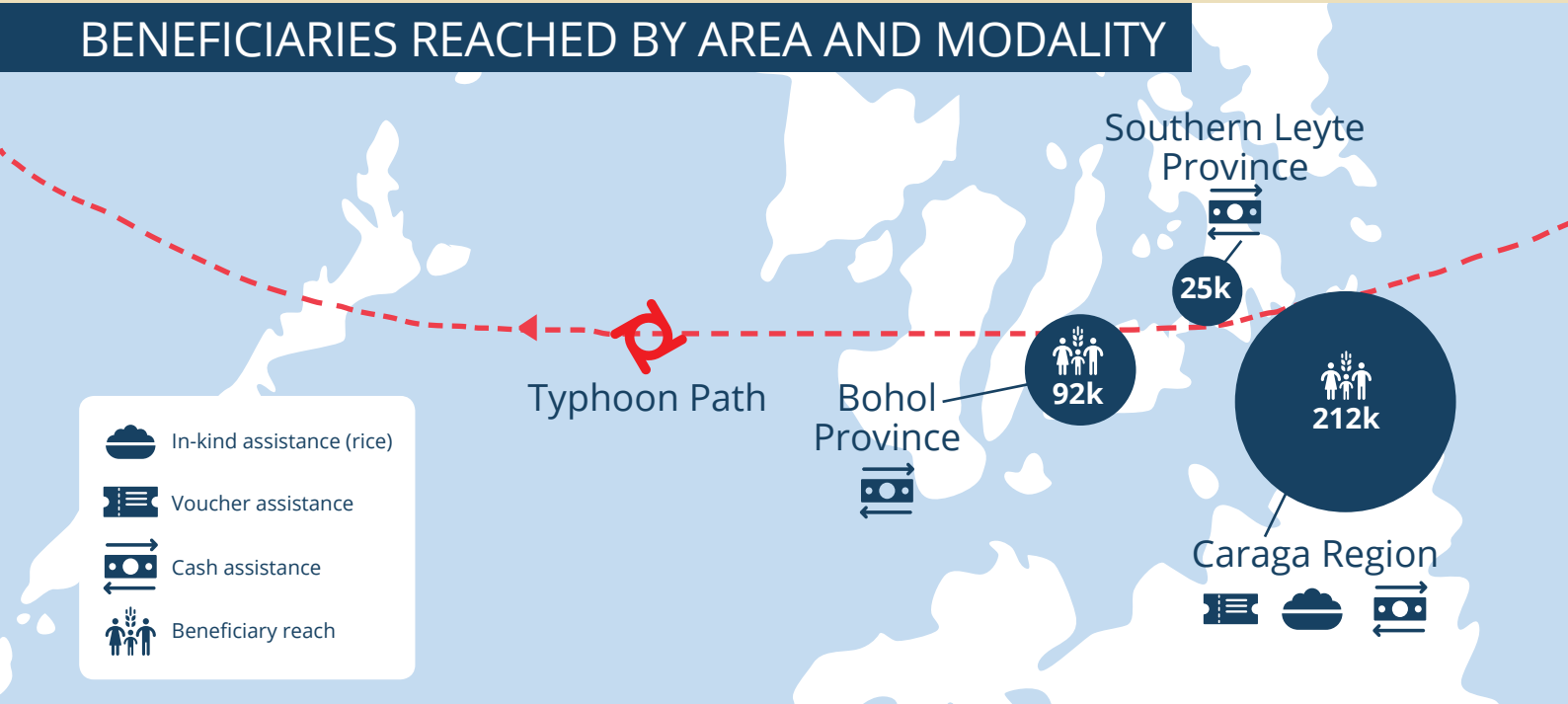
Photo: WFP/Rein Skullerud



# SUPPORTING PEOPLE AFFECTED BY TYPHOON RAI

The Government and the international community delivered a **large-scale emergency response to Typhoon Rai** (locally named Odette), which affected more than 12 million people. WFP launched an emergency operation that was implemented in two phases: **emergency assistance** followed by **early recovery activities**.

## BENEFICIARIES REACHED BY AREA AND MODALITY



## EMERGENCY PHASE



**111,000 PEOPLE** reached with food assistance



**23,000 BAGS** of locally-procured rice distributed



**319,000 PEOPLE** received cash and vouchers



**USD 9 MILLION** distributed to crisis-affected people

## EARLY RECOVERY PHASE



**117,000 PEOPLE** supported with early recovery activities through Food Assistance for Assets (FFA)



**430,000 SEEDLINGS** produced



**56 HECTARES** of **GARDENS** created



**130 SOCIAL INFRASTRUCTURE** restored



**24 KM** of **IRRIGATION CANALS** rehabilitated

# CONSOLIDATING PEACE AND DEVELOPMENT IN BARMM

WFP implemented **food assistance for assets** activities **supporting 22,000 beneficiaries**, including decommissioned combatants, soon-to-be decommissioned combatants, indigenous peoples, smallholder farmers and fisherfolk, and conflict-affected populations.



**18 HECTARES**  
of **LAND** cultivated



**7 KM** of **FEEDER ROADS**  
and irrigation canals rehabilitated

WFP supported the BARMM Government with **technical assistance**.



**44 TRAINING** or  
technical assistance  
activities conducted



**4 MUNICIPALITIES**  
supported in the institutionalization  
of home-grown school feeding (HGSF)



Photo: WFP/Rein Skullerud

## FARM-TO-SCHOOL MEALS IN BARMM

With WFP's support in institutionalizing HGSF in BARMM, the Municipality of Datu Abdullah Sangki launched the **pilot HGSF programme** in Bisang Elementary School providing **100 schoolchildren** with healthy, nutritious meals prepared with locally sourced ingredients.

## REDUCING MALNUTRITION

WFP delivered nutrition-specific, nutrition-sensitive multisectoral responses aligned to the priority programmes set in the Philippine Plan of Action for Nutrition (PPAN) 2017-2022.

**460 WOMEN AND  
ADOLESCENT GIRLS**

participated in community dialogues  
to positively influence their nutrition-  
related behaviours



**4 KEY NUTRITION  
POLICIES AND PLANS** informed



**3 STUDIES** on food  
**vouchers, food fortification  
and nutritious diets** conducted



# SUPPORTING THE GOVERNMENT IN DISASTER PREPAREDNESS AND RESPONSE

WFP provided technical support in institutionalizing **Anticipatory Action (AA)** to strengthen preparedness capacities. WFP invested in **evidence generation** to better understand climate-related vulnerabilities and risks to livelihoods, food security and nutrition.



**45,000 HOUSEHOLDS** registered under the AA programme



**4 REGIONAL LIVELIHOOD ZONES** in the Climate Change and Food Security Analysis (CCFSA) Study validated

WFP provided **emergency telecommunications** and direct **logistics support** to the Government in multiple emergencies.



**852 TRUCKS** mobilized to transport 949,000 Government Family Food Packs and other non-food supplies



**24 EMERGENCY RESPONSE SITES** provided with internet connectivity



**6 SETS of EMERGENCY TELECOMMUNICATIONS VEHICLES** deployed

## DONORS



Brazil



Denmark



Philippines

The Private Sector  
Companies, Foundations and Individuals



Republic of Korea



From  
the people of Japan

