



World Food Programme

SAVING LIVES
CHANGING LIVES

WFP Cameroon Northwest - Southwest Crisis Response

OPERATIONAL CONTEXT

The Northwest and Southwest (NWSW) regions of Cameroon have been caught up in armed conflict between State Security Forces and Non-State Armed Groups since 2017. The conflict has triggered a serious humanitarian crisis, with over **629,000 internally displaced persons (IDPs)**.

The deteriorating security situation caused by escalating hostilities between the two sides has continued to affect the food security of households, especially the displaced populations and farming households who are already extremely vulnerable due to the disruption of their livelihood activities. The consequences of the conflicts, protracted effects of COVID-19 and knock-on effects of

global economic crisis have led to increase in the food insecurity situation over the years. Furthermore, due to increasing insecurity and consequent movement restrictions, humanitarian access remains a major challenge.

According to preliminary Cadre Harmonisé results, about **1.16 million people are severely food insecure between January and May 2023**, a slight reduction of five percent compared to the same period in 2022. The report further projects that the number of food-insecure people will reduce to **774,000 people between June and August 2023** as there will be an increase in food supply from agricultural harvests.

Humanitarian situation at a glance



629,000
IDPs



420,000
Returnees



1,163,000
Food insecure people

May 2023

WFP RESPONSE

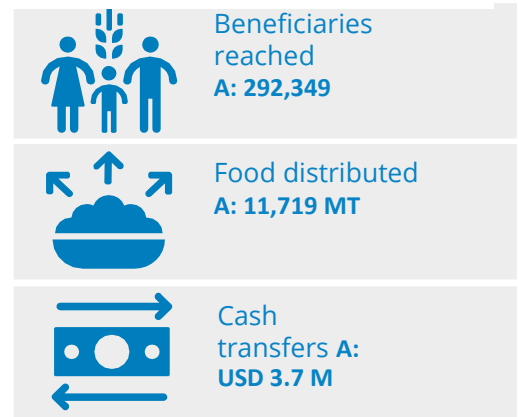
In response to the needs of the affected populations in the Northwest and Southwest regions, WFP has been collaborating with the Government to provide assistance since 2018. WFP implements an integrated package of interventions including life-saving emergency food assistance through food and cash-based transfers to enable the assisted people to meet their immediate food and nutrition needs. This package also includes complementary nutrition support through provision of super cereals, as well as nutrition education, counselling, and behaviour change interventions. The activities are implemented within the framework of the WFP Cameroon Country Strategic Plan (2022-2026).

The beneficiaries comprise food insecure IDPs, returnees, people living with special needs including people living with HIV (PLHIV), vulnerable local communities, children aged 6 to 23 months, pregnant and breastfeeding women (PBW) in the Northwest and Southwest. WFP has adopted a participatory and inclusive approach to targeting of beneficiaries and in the implementation of its interventions, to guarantee inclusivity, respect, dignity, gender equality and protection of the assisted populations.

Unconditional Emergency Assistance

WFP supports IDPs, returnees and host communities in the North-West and South-West regions who have been made vulnerable by the consequences of the protracted crisis, the compounded effects of COVID-19 pandemic that continue to be felt even after the pandemic, disasters including climate-related stocks such as flash floods, and the ongoing global economic crisis through unconditional and integrated food assistance to crisis-affected people. This assistance enables the vulnerable beneficiaries to meet their immediate food and nutrition needs, preventing further deterioration of their food and nutrition insecurity. Social and behaviour change communication (SBCC) accompanies food assistance to promote awareness of food and nutrition security, encourage families to purchase and eat diverse diets, and promote good sanitation, hygiene and gender equality. As part of the emergency nutrition support to reduce the incidence of malnutrition in children aged 6-23 months, WFP partners conduct door to door community screening in targeted communities for early detection and referral of children.

Highlights March-December 2022 (CSP 2022-2026)



From January to December 2022, WFP assisted about 292,000 people with more than USD 4.6 million through cash and value voucher transfers and 15,300 metric tons of food as emergency assistance and nutrition support.

Respect, dignity, protection and accountability to affected people (AAP) are key elements of WFP's interventions. The organization runs a **call centre** which runs for 24 hours daily, to receive a variety of feedback from beneficiaries. The call centre is reachable through a toll-free number which is **8099**.

Under the Rapid Response Mechanism (RRM), WFP is able to respond to emergency situations by providing assistance to communities facing humanitarian crises. In March 2023 the Organization provided in-kind food assistance to 321 households following heavy rainfall that resulted to heavy flooding and mudslides, displacing hundreds of people.

Nutrition improvement support

WFP seeks to build the resilience of vulnerable populations and support malnutrition prevention in children under the age of 5, pregnant and breastfeeding women (PBW), adolescent girls and people living with HIV (PLHIV). Beneficiaries receive specialised nutritious foods to complement their dietary intake and participate in integrated complementary nutrition activities and counselling and gender-sensitive behaviour change communication interventions that address the underlying causes of malnutrition.

WFP applies a multi-sectoral and multi-actor integrated package approach and works with local

producers and partners to support the local production of nutritious foods and make them more accessible. In addition, in 2023, WFP is integrating cash-based transfers to PBW to enable them to seek better health services and afford more nutritious food for their children.

To reduce the prevalence of malnutrition to an acceptable level by 2030, WFP advocates for change from curative-centered to preventive community-based nutrition-sensitive programs. To improve knowledge and practices on healthy

nutrition, WFP supports the creation and maintenance of Action and Support groups for PBW and PLHIV. These groups conduct cooking demonstrations, education, counselling and hygiene sessions for their members and their families.

Under this programme, WFP provided technical and financial support to the Government for elaborating and preparing the budget of the 2022-2030 multisector Nutrition Development Plan for Cameroon.

BENEFICIARY AND DISTRIBUTION FIGURES

Indicator	2021	Jan-Feb 2022	Mar-Dec 2022
Total beneficiaries who received in-kind assistance	286,015	235,036	233,631
Returnees and vulnerable host populations who received in-kind food assistance	145,216	151,203	63,707
IDPs who received in-kind assistance	140,799	83,833	169,924
People who received cash assistance	54,220	55,351	58,718
Returnees and vulnerable host populations who received cash assistance	37,954	33,506	28,170
IDPs who received cash assistance	16,266	21,845	30,548
People reached with nutrition prevention assistance	29,850	19,107	0
Total food commodities distributed (metric tonnage)	14,408	3,587	11,719
Total cash amounts distributed (USD)	2.9 million	923,027	3.7 million

PARTNERS

WFP has been able to implement the interventions thanks to the support of and collaboration with partners including the Government of Cameroon, donors, other UN agencies, and cooperating partners.



FUNDING NEEDS

To continue implementing activities in the Northwest and Southwest regions, WFP urgently needs USD 29.2 million from May to December 2023.





World Food Programme Cameroon Country Office

Avenue Valéry Giscard d'Estaing
B.P: 7308 Yaounde – Cameroon

E-mail: cameroon.communications@wfp.org
Tel: +237 696 84 17 60

