



World Food  
Programme

SAVING  
LIVES  
CHANGING  
LIVES

# WFP Cameroon Lake Chad Basin Crisis Response

## OPERATIONAL CONTEXT

The crisis in the Lake Chad Basin has led to the influx of more than **124,000 Nigerian refugees in Cameroon**, 96 percent of whom are in the Far North region of Cameroon. They are fleeing from violent conflict between the government security forces and non-state armed groups (NSAGs) in Nigeria since 2014. Additionally, incursions by NSAGs and clashes over natural resources in the Far North Region have led to internal displacements. Furthermore, floods between August and November 2022 affected more than 313,000 people in the Far North region, including 70,000 people forced to displace, about 48,000 hectares of cultivated farmlands destroyed, and about 7,000 animals were lost. These circumstances have resulted in

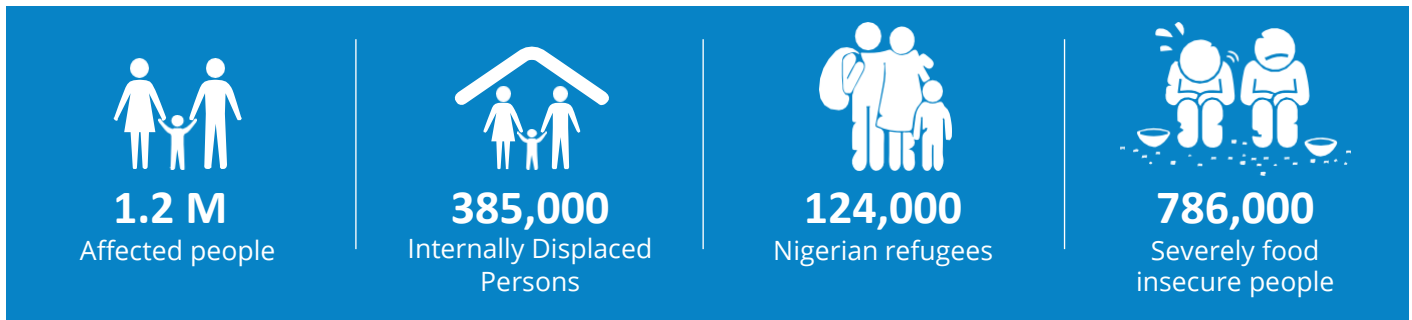
385,000 internally displaced persons (IDPs)<sup>1</sup>. Therefore, the conflict, coupled with extreme climatic events, inadequate infrastructural development and high poverty levels in the region, has triggered a humanitarian crisis, impacting over 1.2 million people.

Preliminary results of the *Cadre Harmonisé* indicate that over **701,000 people are severely food insecure between January and May 2023**, compared to 738,000 people during the same period in 2022. The report further projects that there will be **937,000 food-insecure people between June and August 2023** as a result of the lean season.

May 2023

<sup>1</sup> [Country - Cameroon \(unhcr.org\)](https://www.unhcr.org/country/cameroon)

## Humanitarian situation at a glance



## WFP RESPONSE

Within the WFP Cameroon Country Strategic Plan (2022-2026), WFP, with support from the Government and other partners, has been implementing an integrated package of interventions, including life-saving emergency food assistance through food and cash-based transfers, daily cooked meals for schoolchildren, resilience-building for early recovery to withstand future shocks while building social cohesion between the local population, IDPs and refugees. WFP also responds to the nutritional needs of children suffering from malnutrition and pregnant and breastfeeding women.

WFP also supports victims of climate-related disasters like the lean season and floods.

Respect, dignity, protection and accountability to affected people (AAP) are key elements of WFP's interventions. WFP runs a **call centre** which runs for 24 hours daily, to receive a variety of feedback from beneficiaries. The call centre is reachable through a toll-free number which is **8099**.

### Emergency food assistance

WFP assisted crisis-affected people, including refugees, returnees and IDPs, through monthly unconditional in-kind food distributions and cash-based transfers, enabling them to meet their food and nutrition needs and preventing their food security situation from worsening.

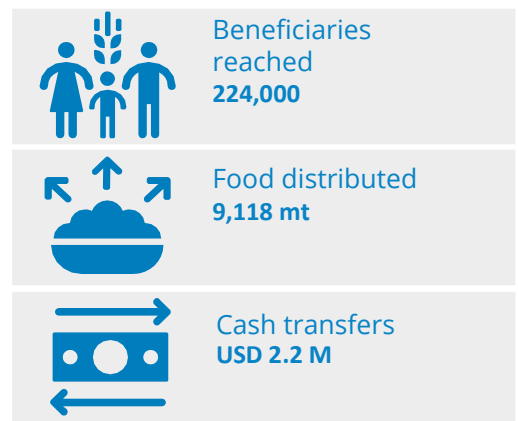
Under the Rapid Response Mechanism (RRM), WFP assisted more than 69,000 people affected by floods that destroyed vast farmlands and villages in 2022.

### School feeding programme

WFP continues to complement the Government's efforts in implementing school feeding in primary schools in the region. This initiative provides daily cooked and nutritious meals to learners, often the only meal the children eat during school days. This initiative incentivizes parents to enroll their children in school and enhances attendance and retention.

The school feeding initiative has a multiplier effect of minimising adverse risks, such as early or forced marriages for girls and forced recruitment of boys by criminal gangs (radicalization), while providing opportunities for communities to benefit from the advantages of improved educational levels.

## Highlights March- December 2022 (CSP 2022-2026)



Through this programme in 2022, WFP provided school meals to over **72,000 learners in 145 schools across the Far North Region**.

### Early recovery and resilience strengthening

Using community-based approaches, WFP supports the early recovery of affected populations and strengthens their resilience to shocks by implementing food assistance for asset creation activities. Through this initiative, communities are engaged in the creation and rehabilitation of productive community assets such as farms, the construction of artificial ponds, wells, irrigation canals, livestock drinkers, protective dikes and stone cords, compost pits, the establishment of tree nurseries and reforestation of degraded land. These assets help strengthen the food system while conserving and restoring natural resources and strengthening social cohesion between host communities and displaced populations.

Post-harvest management is a crucial focus of the programme, with communities rehabilitating feeder roads, coming together to create associations or cooperatives and constructing drying and storage facilities for their farm produce.

WFP and partners also train smallholder farmers in post-harvest management, accessing markets, financial education and management of income-generating activities.

Finally, in 2022, WFP purchased 250 mt of sorghum and 15 mt of cowpeas from smallholder farmers in the Far North Region. While in 2021 WFP procured over 7,000 mt of sorghum. Plans are ongoing to ensure local procurement levels are increased way above levels of 2021 and 2022. Amounts procured by WFP in this region represents between 80 and 98 percent of total local procurement in Cameroon which was over 9,000 mt in 2022 and 7,200 in 2021.

## Prevention of acute and chronic malnutrition

Working with other stakeholders, WFP complements the Government’s efforts in improving the nutrition status of children aged 6 to 23 months by implementing malnutrition treatment and prevention programmes.

WFP integrates social and behaviour change communication (SBCC) in its programming to promote food and nutrition security awareness, encourage families to produce, prepare and eat locally available nutritious diets, and promote good sanitation, hygiene and gender equality.

## BENEFICIARY AND DISTRIBUTION FIGURES

Indicator	2021	Jan-Feb 2022	Mar-Dec 2022
<b>People who received in-kind food assistance</b>	<b>275,035</b>	<b>144,157</b>	<b>209,694</b>
Refugees who received in-kind food assistance	77,099	68,439	93,784
IDPS and Residents who received in-kind food assistance	184,759	75,718	115,910
<b>People who received cash assistance</b>	<b>38,686</b>	<b>19,246</b>	<b>37,976</b>
People reached with malnutrition prevention and treatment support	44,885	19,371	19,401
People reached through food assistance for asset creation	33,000	0	20,347
People reached under the school feeding programme	74,139	29,818	71,993
<b>Total food distributed (metric tonnage)</b>	<b>7,817</b>	<b>1,456</b>	<b>3,471</b>
<b>Total cash amounts distributed (USD)</b>	<b>4.7 million</b>	<b>849,439</b>	<b>3.9 million</b>

## PARTNERS

WFP has been able to implement its interventions thanks to the support of and collaboration with partners including the Government of Cameroon, donors, other UN agencies and cooperating partners.



## FUNDING NEEDS

To continue implementing activities in the Far North Region from May to December 2023, WFP urgently needs USD 26.5 million.





**World Food Programme Cameroon Country Office**

Avenue Valery Giscard d'Estaing

B.P.: 7308 Yaounde – Cameroon

E-mail: [cameroon.communications@wfp.org](mailto:cameroon.communications@wfp.org)

Tel: +237 696 84 17 60

