



# WFP LEBANON

## 2023 MID-YEAR HIGHLIGHTS



[LINK TO 2022 ACR](#)

### OVERVIEW

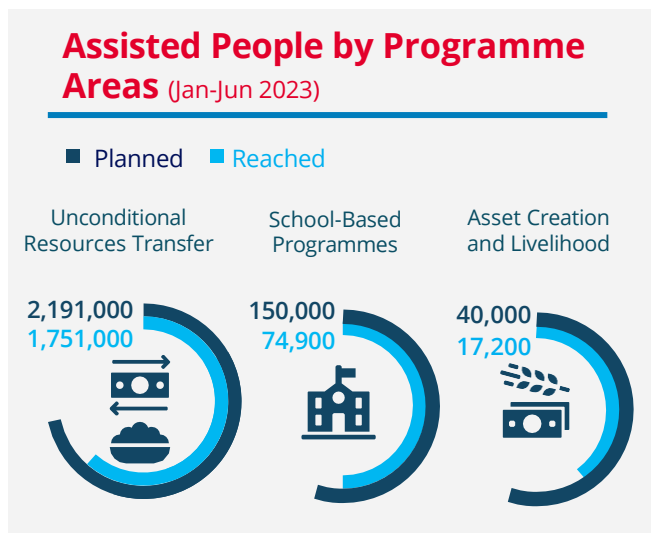
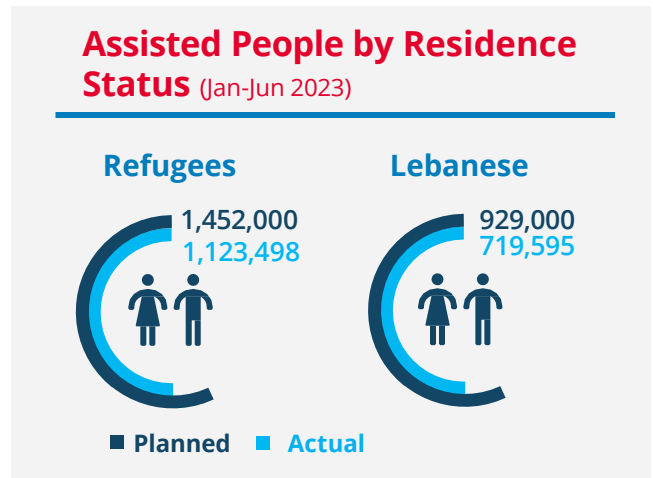
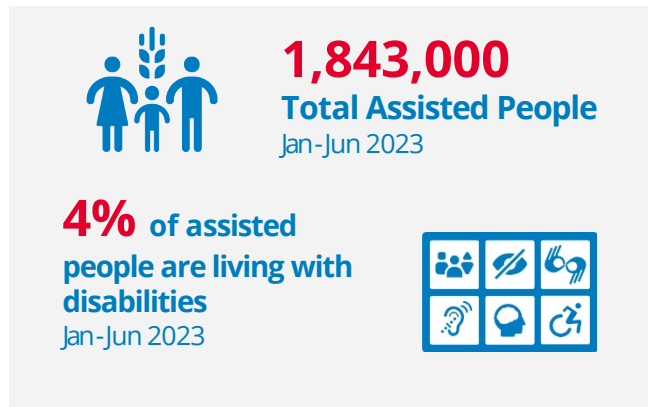
Lebanon's economic and political crisis continued in the first half of 2023, albeit at a slower pace than in 2022. Due to the lack of confidence in the Lebanese pound (LBP), the dollarization of the economy has accelerated significantly between January and June 2023, which had a detrimental impact on the food security of households having limited access to US dollars. Driven by the rapid depreciation of the LBP, Lebanon recorded **the second worst food price inflation in the world in June 2023**, with a nominal food price inflation rate of 280 percent (YoY), as reported by the World Bank.

The second Integrated Food Security Phase Classification (IPC) for Lebanon, conducted in May 2023, reveals that **25 percent of the analyzed population, comprising 1,411,000 individuals are projected to experience acute food insecurity** (IPC Phase 3, Crisis and Phase 4, Emergency) while 45 percent of the total population, classified under IPC Phase 2 (Stressed), are struggling to maintain adequate food consumption and cannot afford some essential non-food expenditures.

As of June 2023, WFP's assistance has been instrumental in supporting **over 1 million refugees and 700,000 Lebanese** nationals to meet their food and other basic needs. In addition, WFP implemented cash transfers to an additional 400,000 Lebanese individuals through the Government's Emergency Social Safety Net. In May 2023, WFP re-initiated the dual currency redemption of cash assistance for Syrian refugees which resulted in significant operational improvements at redemption points and a substantial rise in the purchasing power of assisted families.

In the first half of 2023, WFP deepened its **capacity strengthening and technical support to national institutions and partners** by supporting the development of the **Ministry of Social Affairs'** capabilities in designing and operating its social safety nets (e.g.: building the Grievance Redress Information System and training social workers), supporting the **Lebanese Ministry of Economy and Trade** in implementing a market price information system and supporting the **Ministry of Agriculture** in conducting a satellite-assisted crop-mapping exercise. Additionally, WFP conducted a wheat value chain study with FAO that informs the **potential for wheat flour fortification**.

WFP **scaled up the NPTP e-card assistance** reaching in June 2023, 88 percent of its 2023 target to assist 430,000 individuals by December 2023. WFP continues to **support the Government in building unified and sustainable Social Safety Nets** and strong food systems and engaging with the global School Meals Coalition towards ensuring that every child can receive a healthy and nutritious meal in school by 2030.



*The above numbers of people assisted and amount transferred do not include the beneficiaries or transfers of the Government's ESSN programme*

## STRATEGIC OUTCOME 1 CRISIS RESPONSE FOR REFUGEES & LEBANESE

- WFP provided cash assistance to **1,042,400 refugees** through three modalities where people can redeem their assistance at ATMs, money transfer agents, or shops contracted by WFP.
- WFP **re-introduced dual currency redemption** in May 2023 enabling assisted families to better meet their needs. [Read more here](#) and [here](#).
- As more Lebanese are enrolled in national social assistance programmes, WFP **scaled down** the number reached with **in-kind food assistance** from 290,000 in January 2023 to **270,000** in June 2023.
- A **new parcel composition** was introduced in January 2023, providing around 61 percent of the total individual energy requirement, and reducing supply chain costs.

## STRATEGIC OUTCOME 2 BETTER NUTRITION, HEALTH & EDUCATION

- WFP assisted **380,200 Lebanese individuals** through the National Poverty Targeting Programme (NPTP).
- **74,900 students** benefited from the school feeding programme through the distribution of school snacks and cold meals prepared by women volunteering at 8 school kitchens.
- WFP launched a new **'Satellite School Kitchen' modality**, where existing school kitchens expand the production of cold meals to additional students in nearby schools.

## STRATEGIC OUTCOME 3 MORE RESILIENT LIVELIHOODS

- **17,200 Syrian refugees and Lebanese** received cash transfers through Food Assistance for Training and for Assets activities.
- WFP supported **12 new Lebanese small and medium enterprises (SMEs)** through its **Food System Challenge** to develop their solutions to key food system challenges, namely access to raw materials, Import substitution, and access to energy.

## STRATEGIC OUTCOME 4 CAPACITY STRENGTHENING OF NATIONAL PROGRAMMES & SYSTEMS

- WFP **trained more than 500 social workers** in the Ministry of Social Affairs (MoSA) on gender and social inclusion, digital data collection and quality control and initiated the **set up of a call centre operation at MoSA**.
- WFP conducted a **due diligence review of the ESN and NPTP** to guide the Government on unifying both programmes for improved social assistance. [Read more here](#).
- WFP and the Ministry of Agriculture carried out a **satellite-assisted crop-mapping exercise** to provide data and analysis for agricultural interventions aimed at smallholder farmers that could boost local production.

## STRATEGIC OUTCOME 5 ENABLING HUMANITARIAN RESPONSE

- WFP processed social safety net payments through the **Emergency Social Safety Net (ESSN) to 403,500 Lebanese**, in support of the Ministry of Social Affairs and the Presidency of the Council of Ministers.
- WFP and FAO conducted a wheat value chain study which informs the **potential for wheat flour fortification**.

### Assisted People by Modality

(Jan-Jun 2023)



USD 135.2 M

Total actual cash transferred



1,547,000

CBT-assisted individuals



19,323 MT

Total actual food distributed



295,900

Food-assisted individuals

The above numbers of people assisted and the amount transferred do not include the beneficiaries or transfers of the Government's ESN programme.

USD 32.5 M

Total cash transferred under ESN Programme



403,500

ESSN Programme assisted individuals

### Funding Statistics (Jan-Jun 2023)



**27%**  
of needs resourced  
as of June 2023

USD 1.76B

Needs Based Plan

USD 481.6M \*  
Available Resources

USD 248.2M

Expenditure

\*of which USD 78.8 Million ESN

### Total Food Locally Procured

(as of June 2023)



11,123 MT



USD 14.5 M



### Donors 2023

Australia, Austria, Canada, Cyprus, European Union, France, Germany, United Kingdom, Ireland, Italy, Japan, Lebanon's Presidency of the Council of Ministers, Malta, Norway, Poland, Private Donors, Republic of Korea, Russian Federation, Switzerland, USA