

2013 ● ● 2022

EVALUATION SCOPE

8 focus countries

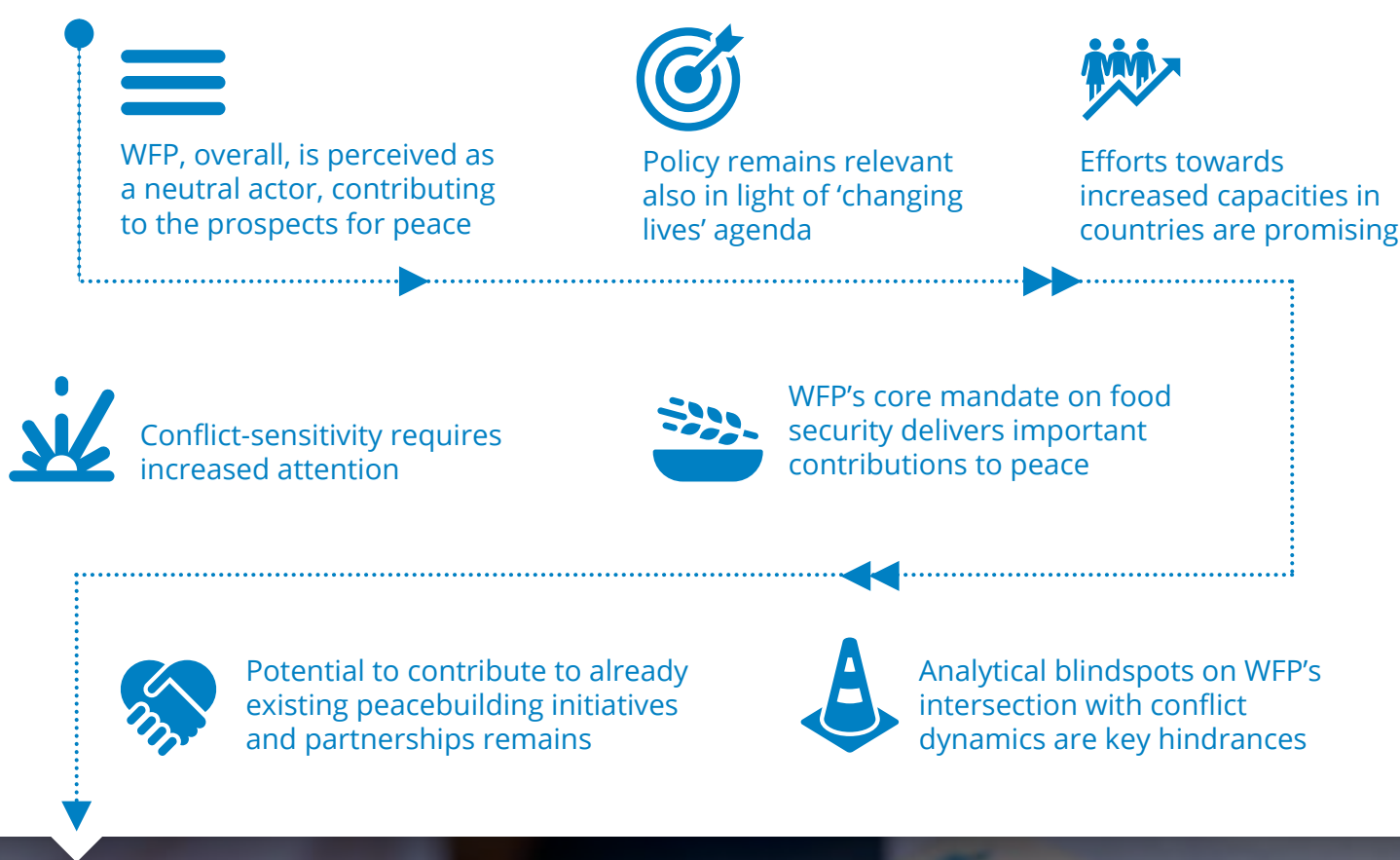
semi-automated analysis of **11,000+** documents reviewed covering all WFP country offices

Theory of change reconstruction

survey of **2155** crisis-affected people (more than half, women)

comparative analysis with **FAO UNICEF OXFAM International**

KEY FINDINGS & CONCLUSIONS



RECOMMENDATIONS

- 1** Strengthen actionable, country-level analysis of WFP's influence on conflict dynamics
- 2** Create incentives and take steps to adapt organisational culture to make conflict sensitivity more central
- 3** Mainstream conflict sensitivity in WFP programmes and processes and with partners and contractors
- 4** Support existing peacebuilding processes while drawing on WFP's core mandate on alleviating food insecurity

KNOW MORE →

Brief

Summary Report

Full Report