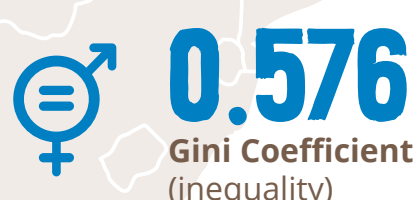
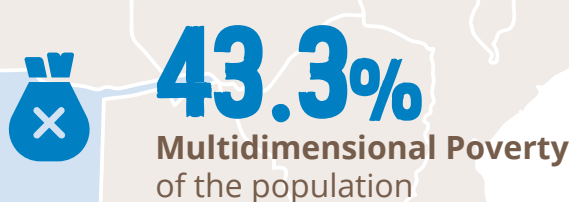
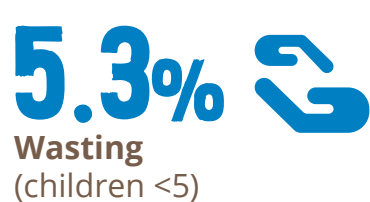
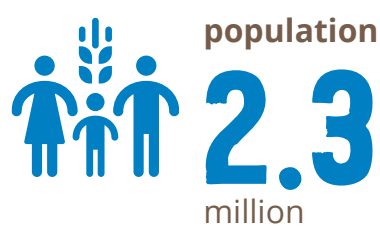


COUNTRY CONTEXT



COUNTRY STRATEGIC PLAN (CSP) focused on six strategic outcomes

- 1** Vulnerable populations are enabled to meet their food and nutrition needs (16%)
- 2** Policy Dialogues and Programmes are informed by evidence on hunger (6%)
- 3** Food insecure households benefit from access to food and nutrition during/after crisis (71%)
- 4** Government institutions have capacity to conduct analysis to achieve food systems (6%)
- 5** Partners are supported by supply chain and digital services (1%)



May 2022 **EVALUATION** June 2023

KEY FINDINGS & CONCLUSIONS

CSP RELEVANCE AND ALIGNMENT



The CSP is well aligned with Government's priorities to achieve the SDGs



Based on its comparative advantages, WFP was strategically well positioned to contribute to new policies



WFP adapted to Government priorities, but many new interventions challenged internal programme coherence

CONTRIBUTION TO CSP OUTCOMES



WFP supported a food systems approach in government policy, but pilots are too recent to show results



WFP's response to external shocks, such as drought and COVID-19, was effective



WFP strengthened Government's capacity to develop policy frameworks for social safety nets and school feeding

CROSS CUTTING ISSUES



WFP worked with Government on mainstreaming gender, but competing CSP priorities prevented systematic mainstreaming



WFP had limited scope for addressing protection issues because of insufficient data collection



Beneficiaries received insufficient information about assistance. Feedback mechanisms were limited

COST EFFICIENT USE OF RESOURCES



Cash transfers seem to increase cost- efficiency, but WFP has not collected sufficient data to demonstrate this robustly



Data available indicated appropriate targeting of locations and groups



Timeliness was challenged by late funding, limited response capacity, lengthy procurement processes and COVID-19 restrictions

PARTNERSHIPS



With a focus on country capacity strengthening (CCS), the original CSP prioritized high-level government partnerships



WFP has developed many new partnerships on food systems, particularly with Government and the private sector

RECOMMENDATIONS

1 Enhance strategic planning, activity design and project implementation.

2 Strengthen knowledge management and M&E systems to improve activity design and linkages with CCS objectives.

3 Continue building strategic partnerships to maximize their contributions to the CSP and broader strategic goals.

4 Improve the integration of cross-cutting issues into the design, planning and implementation of interventions.

KNOW MORE

Brief

Summary Report

Full Report