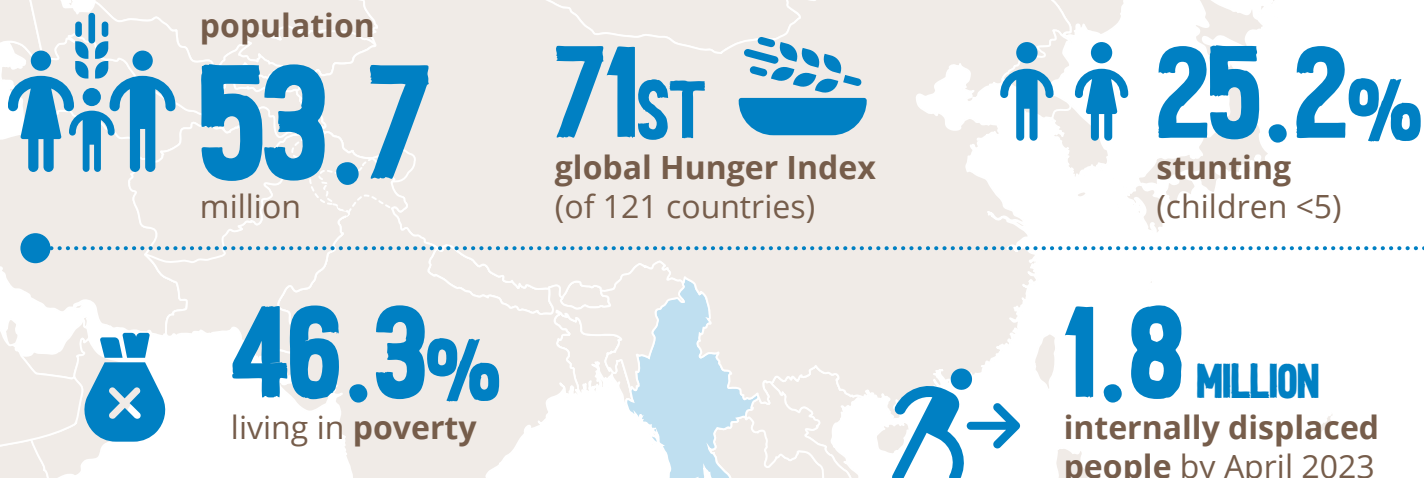


## COUNTRY CONTEXT



## COUNTRY STRATEGIC PLAN (CSP) focused on four strategic outcomes

- 1** Crises affected people meet their food and nutrition needs (**65%**)
- 2** Vulnerable population has access to food (**22%**)
- 3** Children under 5 and other vulnerable groups have improved nutrition (**11%**)
- 4** Partners have access to reliable common services (**2%**)

CSP budget **643.4** million | **63%** funded

July 2022

EVALUATION

June 2023

## KEY FINDINGS & CONCLUSIONS

### STRATEGIC POSITIONING AND ADAPTATION



WFP programming was successfully scaled-up and adapted in response to country-wide shocks



Geographic targeting and delivery modalities were adjusted to meet the expanding crisis and diverse needs



Humanitarian needs in hard-to-access areas were likely underestimated, leading to potential coverage gaps

### RESULTS AND PERFORMANCE



Food consumption targets were largely met but beneficiaries continue to resort to negative coping strategies



School feeding, asset creation activities and MAM treatment improved food security and nutrition, but coverage was constrained



Gender-sensitive and inclusive programming, taking intersectionality of various vulnerability factors into account



Reliable common services considered vital by humanitarian community during COVID-19



Limited consideration of resilience at community, institutional and systems levels

### PARTNERSHIPS AND COORDINATION



Extensive and diverse partnerships, focused on delivery of assistance



Cooperating partners played central role in delivering assistance and benefitted from considerable capacity strengthening



WFP fully integrated into humanitarian assistance frameworks and coordination mechanisms

### HUMANITARIAN PRINCIPLES, PROTECTION AND ACCOUNTABILITY



Humanity and Do no harm prioritised



Community engagement mechanism continually expanded but use challenged by technology limitations and low beneficiary awareness



Careful protection risk management, but limited support for cooperating partners to manage risks transferred by WFP



Difficult ethical choices around neutrality and independence principles, with limited guidance from HQ

### RESOURCE MOBILIZATION AND EFFICIENCY



Adequate human resources to manage expanding operations, but recruitment and deployment of experts and international staff was a challenge



Satisfactory financial resources for emergency response, but school feeding and asset creation activities were underfunded



Activities generally implemented in a timely and cost-efficient manner

## RECOMMENDATIONS

- 1** Adapt and scale up with special attention to financial resources, flexibility and staffing
- 2** Ensure inclusive, principled and risk-sensitive approaches with adequate corporate guidance
- 3** Enhance feedback systems and improve use of qualitative and community-based data for decision making
- 4** Integrate a wider resilience perspective throughout the CSP to address structural vulnerabilities

KNOW MORE

Brief

Summary Report

Full Report