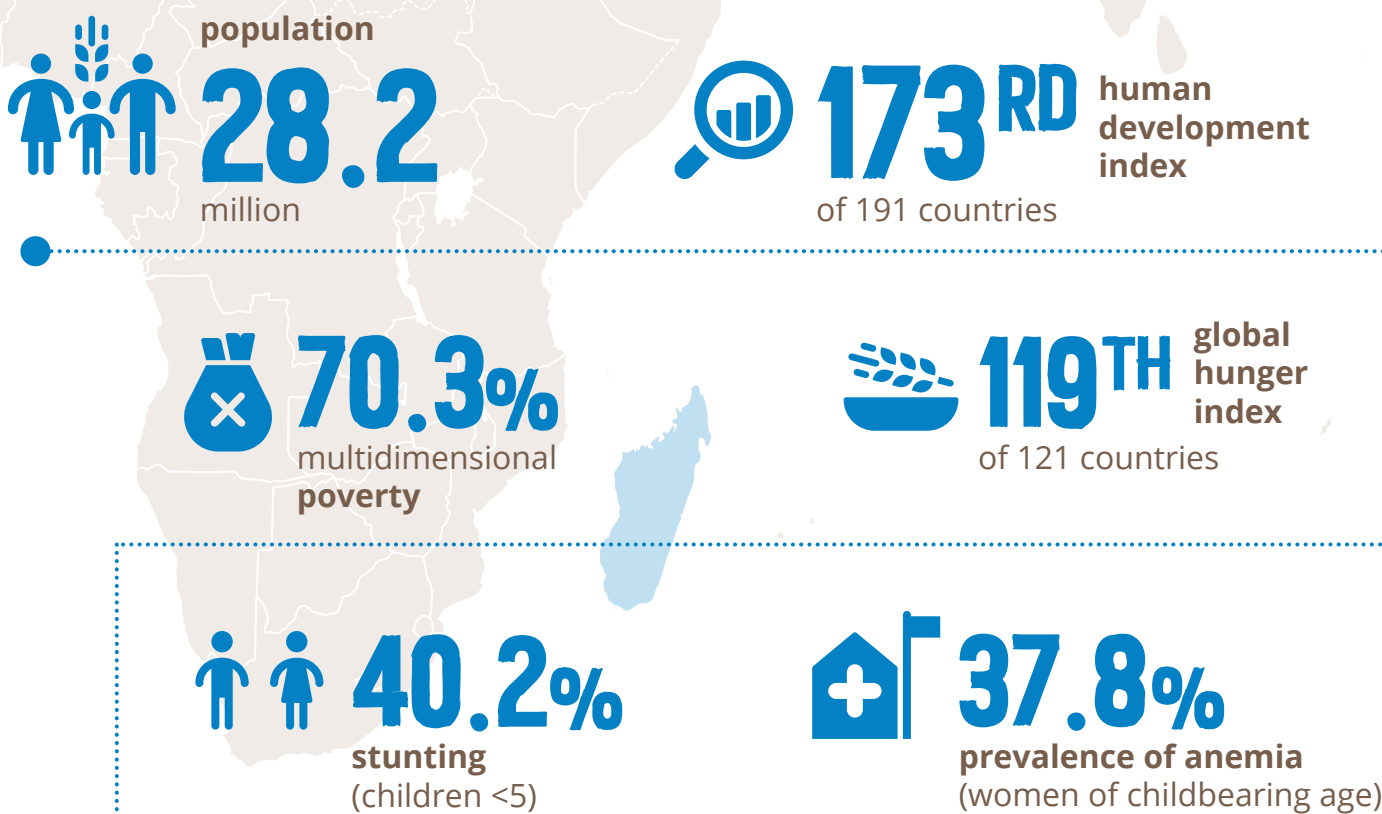


COUNTRY CONTEXT



COUNTRY STRATEGIC PLAN (CSP) focused on five strategic outcomes



CSP budget 628.4 USD million | 53% funded

April 2022 • EVALUATION • April 2023

KEY FINDINGS & CONCLUSIONS

RELEVANCE AND STRATEGIC POSITIONING



Aligned to national strategies. Promising agreements with state partners across all strategic outcomes. Links with local partners developing



WFP prioritized activities in southern regions, although pockets of malnutrition are documented in other areas



Questions on WFP's role in addressing long-term structural, socio-economic and environmental crises like drought

CONTRIBUTION TO CSP STRATEGIC OUTCOMES



Resilience interventions relatively small-scale, still insufficient to counter underlying causes of food insecurity



School meals contributed to attendance and retention. Drop-out in 2021 due to COVID-19



Good coverage of crisis-affected populations. Malnutrition treatment effective, infrastructures rehabilitated

CROSS-CUTTING AIMS



Contributions to improved female representation in decision-making, but more analysis needed



Complaint mechanisms supported accountability but should be expanded and made more accessible



Room for greater attention to climate and environmental issues

EFFICIENT USE OF RESOURCES



Multiplicity of activities, combined with internal capacity limitations, explain operational delays



Improved efficiency through the expanded use of cash-based transfers

FACTORS AFFECTING CSP PERFORMANCE



Donor earmarking limited funding of resilience building activities



Lack of specific profiles hindered advocacy, coordination and capacity strengthening efforts



WFP established solid links with the Government, but more efforts needed on technical training, design and implementation of field activities

RECOMMENDATIONS

- 1** Invest in integrated risk management, including preparedness
- 2** Advocate for an enabling environment at Government level for risk management, crisis preparedness and response
- 3** Establish a stronger evidence base for determining the value of WFP's activities beyond humanitarian response
- 4** Develop an awareness programme to consider the potentially harmful impacts of humanitarian and development assistance
- 5** Establish or reactivate an internal unit for vision and integration within the country office

KNOW MORE

Brief

Summary Report

Full Report