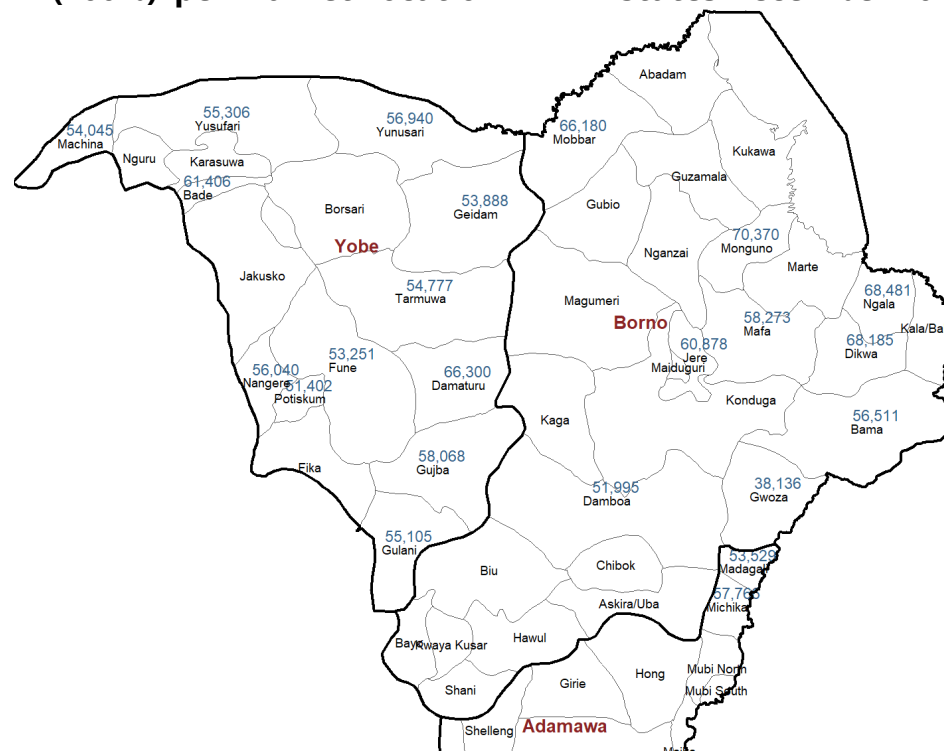




SMEB (100%) per Market Location in BAY States December 2023



Highlights

- The food inflation index increased to 33.93 percent in December 2023 on a year-on-year basis from 32.84 percent in November 2023 with a difference of 1.09 percent due to an increase in the prices of some food items¹. Compared to the parallel market rate of ₦1159/\$1 for the previous month, the Naira depreciated by 5.2% on the parallel market to close at ₦1220/\$1 on the 31st of December. This brings the total year-on-year (December 2022 to December 2023) depreciation of the Naira to 63%.
- Between November and December, the value of **70% of the cost of Survival Minimum Expenditure Basket (SMEB)** for a family of five increased by 3% from 41,292 naira to 42,615 naira in Maiduguri and Jere in Borno State. The December value of 70% of the cost of SMEB for a family of five in Damaturu represents an increase of 4% when compared to the previous month. Please refer to *Table 3* for the SMEB values in other LGAs of the BAY states.
- In December, petroleum pump prices were observed to still be on the rise across various outlets in the country. In comparison to the previous month, Yunusari LGA in Yobe State witnessed an 88% increase from an average price of 692 naira to 1300 naira per litre. Fuel prices were highest in Monguno LGA of Borno State with an average of 1,700 naira per litre, while the lowest price was observed in Mafa LGA in Borno State, with an average of 635 naira/litre in December 2023. Please refer to *Table 5* for fuel prices in other LGAs of the BAY states.
- The SMEB is seen to be experiencing an increase in the majority of the LGAs in Borno compared to the previous month.** This can be attributed to an increase in the prices of some commodities due to the festivities.

Survival Minimum Expenditure Basket (SMEB)

TABLE 1: SMEB calculated for 5 households members in MMC & Jere markets for one month without the ₦2000 for Firewood

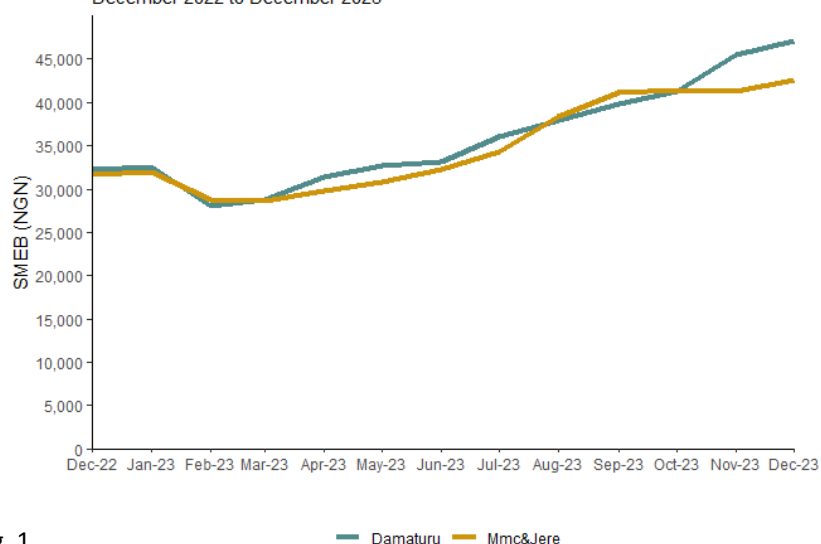
Food Item	gms/day/pp	Kc/day/pp	gms/HH/day	gms/HH/month	Kg/HH/month	Price/Kg- Naira(MPM)	Price/HH/month- Naira
Rice	150	540	750	22500	22.5	1006	22,643.00
Maize	250	913	1250	37500	37.5	462	17,341.00
Beans	75	255	375	11250	11.25	785	8,830.00
Palm Oil	10	88	50	1500	1.5	1455	2,183.00
Groundnuts	15	85	75	2250	2.25	822	1,849.00
Sugar	10	39	50	1500	1.5	1636	2,455.00
G/nut Oil/ Veg Oil	20	177	100	3000	3	1574	4,723.00
Salt	5	0	25	750	0.75	285	214.00
Onion	8	3	40	1200	1.2	535	641.00
Total		2100					60,879.00
Cost of food basket at 70%		1470					42,615.30
Per Capita based on 70% transfer value							8,523.06

TABLE 2: SMEB calculated for 5 households members in Damaturu markets for one month without the ₦2000 for Firewood

Food Item	gms/day/pp	Kc/day/pp	gms/HH/day	gms/HH/month	Kg/HH/month	Price/Kg- Naira(MPM)	Price/HH/month- Naira
Rice	150	540	750	22500	22.5	1080	24,300
Maize	250	913	1250	37500	37.5	540	20,250
Beans	75	255	375	11250	11.25	680	7,650
Palm Oil	10	88	50	1500	1.5	1500	2,250
Groundnuts	15	85	75	2250	2.25	800	1,800
Sugar	10	39	50	1500	1.5	1600	2,400
G/nut Oil/ Veg Oil	20	177	100	3000	3	2500	7,500
Salt	5	0	25	750	0.75	300	225
Onion	8	3	40	1200	1.2	688	825
Total		2100					67,200
Cost of food basket at 70%		1470					47,040
Per Capita based on 70% transfer value							9,408

Trend in the Cost of 70% SMEB - MMC/Jere and Damaturu

December 2022 to December 2023



source: WFP, RAM 2023

Monitoring the prices of food commodities, is essential to understand market functionalities, as well as inform cash based interventions by providing accurate local information on changes in prices. On this premise, WFP undertakes a bi-weekly monitoring of food commodities to gauge how vulnerable and market-dependent households are affected by food price changes and the resulting impact of such changes on the cost of the food basket.

WFP partners monitored a total of 31 markets across 24 LGAs in the December 2023 bulletin. Of these, 2 markets were in Adamawa, 17 markets in Borno (of which eight markets were in MMC and Jere) and the remaining 12 markets were in Yobe State.

Table 3 presents the SMEB values for various LGAs during the month of November 2023, revealing **Monguno LGA with the highest SMEB value (₦70,370)**, followed closely by Ngala (₦68,481), on the other hand Gwoza LGA had the lowest SMEB value (₦38,136) in Borno State.

LGAs of Borno State monitored in December are seen to experience a month-on-month increase in the cost of SMEB **as high as 16 percent in Dikwa LGA** from ₦58,634 in November to ₦68,165 in December, followed closely by Monguno and Ngala LGAs with an increase of 9 percent respectively.

Therefore, prices are generally expected to slightly increase in most LGAs of Borno and Yobe States in the coming month.

TABLE 3: SURVIVAL MINIMUM EXPENDITURE BASKET (SMEB) ACROSS WFP OPERATIONAL AREAS IN BAY STATES DECEMBER 2023

STATE	LGA	Reference Market	100% Total Food MEB for HH Size 5	100% Per Capita HH Size 5	70% Total Food MEB for HH Size 5	70% Per Capita HH Size 5
Adamawa	Madagali	Madagali	53,529	10,706	37,470	7,494
Adamawa	Michika	Michika	57,766	11,553	40,436	8,087
Borno	Bama	Bama	56,511	11,302	39,557	7,912
Borno	Damboa	Damboa	52,895	10,579	37,026	7,405
Borno	Dikwa	Dikwa	68,185	13,637	47,729	9,546
Borno	Gwoza	Gwoza Central	38,136	7,627	26,696	5,339
Borno	Mafa	Mafa	58,273	11,655	40,791	8,158
Borno	Mmc & Jere		60,878	12,176	42,615	8,523
Borno	Mobbar	Damassack (CBM)	66,180	13,236	46,326	9,265
Borno	Monguno	Monguno	70,370	14,074	49,259	9,852
Borno	Ngala	Gamboru	68,481	13,696	47,937	9,587
Yobe	Bade	Gashua Market (Sarkin Hausawa)	61,406	12,281	42,984	8,597
Yobe	Damaturu	Bayantasha Market	67,200	13,440	47,040	9,408
Yobe	Fune	Damagun	53,251	10,650	37,276	7,455
Yobe	Geidam	Geidam	53,888	10,778	37,721	7,544
Yobe	Gujba	Gujba (Buni Yadi)	58,068	11,614	40,647	8,130
Yobe	Gulani	Gulani (Tettaba)	55,105	11,021	38,573	7,715
Yobe	Machina	Machina Central	54,045	10,809	37,832	7,566
Yobe	Nangere	Dawasa	56,040	11,208	39,228	7,846
Yobe	Potiskum	Potiskum Grains Market	51,402	10,280	35,981	7,196
Yobe	Tarmuwa	Babangida	54,777	10,955	38,344	7,669
Yobe	Yunusari	Yunusari	56,940	11,388	39,858	7,972
Yobe	Yusufari	Yusufari	55,306	11,061	38,715	7,743

Trends in the Cost of SMEB

- SMEB value for MMC/Jere increased by three per cent compared to the previous month, three percent when compared to three months ago, and 35 percent when compared to the same time last year.
- In Damaturu, SMEB value is seen to experience a 4 per cent increase when compared to the previous month, 18 percent increase when compared to three months ago, and a 46 percent increase when compared to the same time last year.
- The steady increase in the cost of SMEB in Damaturu LGA affects households' access to food by sapping the purchasing power of households who spend a larger proportion of their disposable income and food assistance on meeting food needs.
- In MMC/Jere, fuel prices decreased by 2.3 percent from an average price of ₦710 per litre in November to ₦694 per litre in December. Damaturu LGA observed a decrease of 25 percent from an average price of ₦935 in November to ₦700 in December 2023.
- The average petroleum pump price is seen to be highest in Monguno LGA in Borno State with an average of ₦1,700 per litre. This is followed closely by Ngala LGA in Borno State and Yunusari LGAs in Yobe State with a sharp increase of 14 percent from ₦1,150 in November to ₦1,360 in December and 88 percent from ₦692 in November to ₦1,300 in December respectively.

Trend in Fuel Prices - MMC/Jere & Damaturu

December 2022 to December 2023

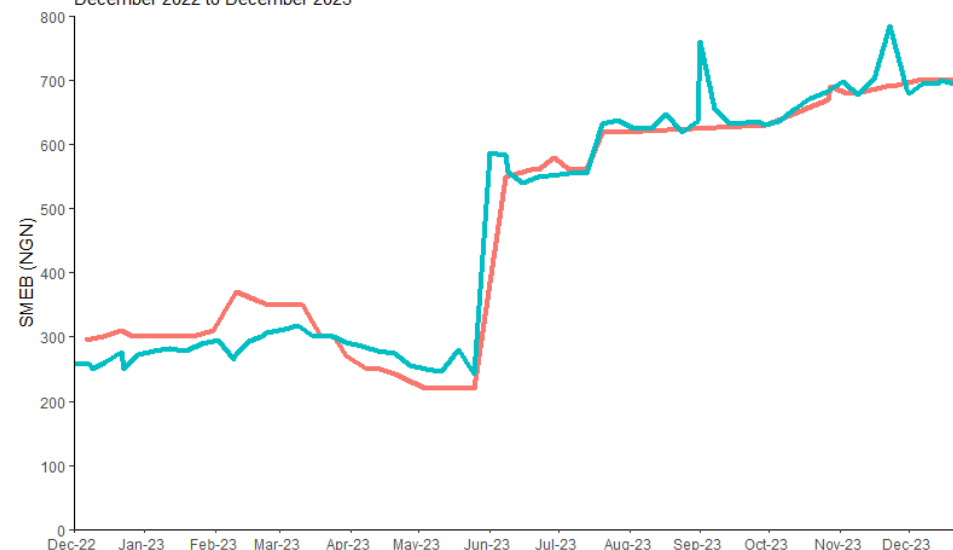


Fig. 2

— Damaturu — MMC/Jere

source: WFP, RAM 2023

TABLE 5: December 2023 Fuel Price

State	Lga	Fuel Price (Naira)
Adamawa	Madagali	768
Adamawa	Michika	719
Borno	Mmc & Jere	694
Borno	Bama	718
Borno	Dambo	750
Borno	Dikwa	975
Borno	Gwoza	747
Borno	Mafa	635
Borno	Mobbar	1,125
Borno	Moguno	1,700
Borno	Ngala	1,360
Yobe	Bade	695
Yobe	Damaturu	700
Yobe	Fune	690
Yobe	Geidam	710
Yobe	Gujba	740
Yobe	Gulani	800
Yobe	Machina	705
Yobe	Nangere	700
Yobe	Potiskum	700
Yobe	Tarmuwa	700
Yobe	Yunusari	1,300
Yobe	Yusufari	900

Table 4: December 2023 70% SMEB Comparison

	Current	MoM	3 Months ago	Year on Year	Same period 5 years ago	5 years average
	Dec-23	Nov-23	Sep-23	Dec-22	Dec-18	5 years ago
SMEB Values						
MMC/Jere	₦ 42,615	₦ 41,292	₦ 41,187	₦ 31,683	₦ 20,017	₦ 24,354
Damaturu	₦ 47,040	₦ 45,443	₦ 39,816	₦ 32,275	₦ 14,541	₦ 22,066
Percentage Change						
MMC/Jere		3	3	35	113	75
Damaturu		4	18	46	223	113

Trends in Key Staple Food Prices

Key Food Price Trends for MMC&Jere (Borno)

December 2022 to December 2023

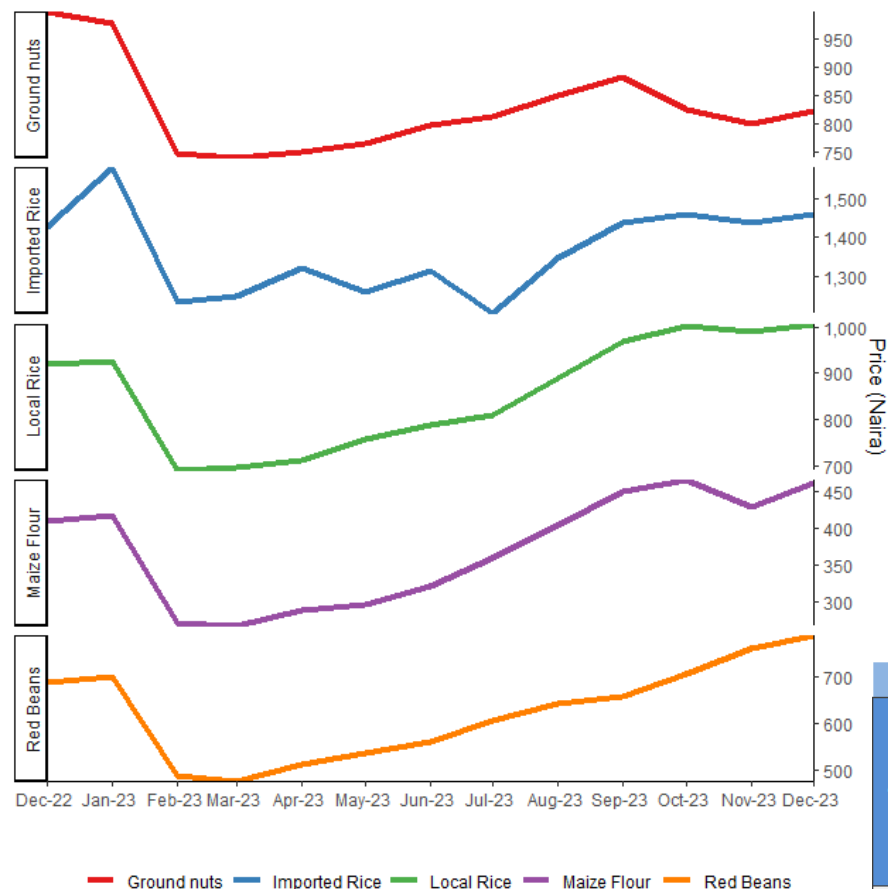


Fig. 3

source: WFP, RAM 2023

- In MMC and Jere markets, a marginal increase of 7 per cent is seen in the price of maize despite the stability seen in the prices of other key staples when compared to the previous month.
- Despite the reduction seen in the price of groundnuts, the price of red beans observed a substantial increase **of 19 per cent** in MMC and Jere markets when compared to three months ago. This is expected to accentuate food insecurity among the most vulnerable market-dependent households.
- In comparison to the same time the previous year, prices of key staples are seen to experience a substantial increase as high as 14 per cent in MMC and Jere markets, despite the reduction seen in the price of groundnuts.
- It is important to note that despite the reduction seen in the prices of maize, and red beans, the Damaturu market is seen to experience an increase **as high as 14 per cent** in the price of local rice when compared to the previous month.
- When compared to the same time three months ago, key staples in Damaturu are seen to experience a substantial increase **as high as 35 per cent**. However, the prices of groundnuts and maize are seen to remain stable when compared to the same time the previous year.

Table 6: Key Staple Food Prices in MMC/Jere and Damaturu

Markets	Food Item	Variation (%) compared to last month	Variation (%) compared to 3 months	Variation (%) compared to same period last year	Markets	Food Item	Variation (%) compared to last month	Variation (%) compared to 3 months	Variation (%) compared to same period last year
MMC and Jere	Maize	7%	3%	13%	Damaturu	Maize	-10%	4%	22%
	Red beans	4%	19%	14%		Red beans	-11%	13%	-24%
	Rice (Imported)	1%	1%	2%		Rice (Imported)	0%	25%	20%
	Rice (Local)	2%	4%	9%		Rice (Local)	14%	35%	14%
	Groundnuts	3%	-7%	-18%		Groundnuts	0%	0%	-6%
	Decrease								
	Relative Stability								
	Marginal Increase								
	Substantial Increase								

Contact: Nsikak Udoh, nsikak.udoh@wfp.org

WFP Nigeria Research, Assessment and Monitoring Unit, Nigeria

<https://dataviz.vam.wfp.org>