



# WFP LEBANON A YEAR IN REVIEW



## OVERVIEW

Thanks to increased coverage of humanitarian and safety net assistance and the easing of some of the key drivers of food insecurity, all populations in Lebanon experienced improvements to their food security situation in 2023. Despite a currency depreciation and high inflation in the first quarter, stabilized exchange rates, enhanced food supply chains, and increased employment opportunities helped reduce acute food insecurity from 25 percent to 19 percent between May and October. However, Lebanon continued to grapple with ongoing socioeconomic and political crises, including a prolonged presidential vacuum and escalating tensions along its southern borders since October.

In this challenging context, WFP continued to play a critical role in maintaining people's access to food and essential needs and strengthening the capacity of national institutions. Throughout 2023, WFP's assistance supported over 1.3 million refugees and 840,000 Lebanese nationals to meet their food and other basic needs. In addition, WFP implemented cash transfers for an additional 416,000 Lebanese individuals through the Government's Emergency Social Safety Net (ESSN). Spurred by October 2023 Gaza war, Lebanon faced rising tensions and conflict along its southern borders displacing over 75,000 individuals. In response, WFP assisted 43,000 affected Lebanese and Syrian households with food parcels and cash assistance. Through the school feeding programme, WFP also supported 9,700 displaced children in 10 schools.

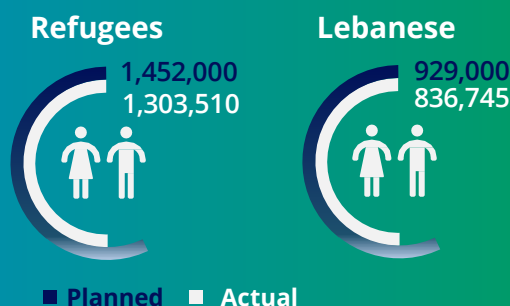
In 2023, WFP demonstrated increased accountability towards affected populations by investing efforts in ensuring safer and more dignified access to assistance. In May 2023, WFP re-initiated the dual currency redemption of cash assistance for Syrian refugees which resulted in significant operational improvements at redemption points and a substantial rise in the purchasing power of assisted families. Moreover, WFP prioritized disability inclusion through door-to-door validation, accessible distribution sites, and tailored training.

In 2023, WFP deepened its capacity strengthening and technical support to national institutions and partners by supporting the development of the Ministry of Social Affairs' capabilities in designing and operating its social safety nets, supporting the Lebanese Ministry of Economy and Trade in implementing a market price information system and supporting the Ministry of Agriculture in conducting a satellite-assisted crop-mapping exercise. Additionally, WFP conducted a wheat value chain study with FAO that informs the potential for wheat flour fortification and supported the Ministry of Public Health with Lebanon's first Integrated Micronutrient and Anthropometry Survey.

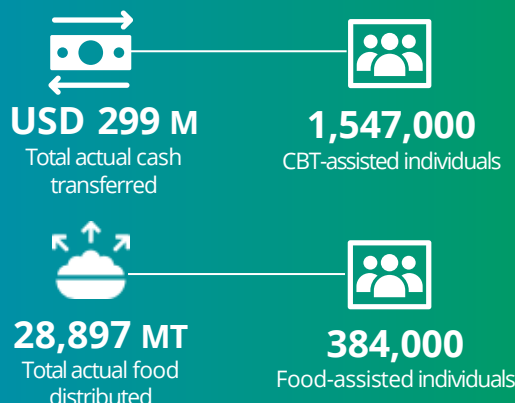
WFP continued to support the Government in building unified and sustainable Social Safety Nets and strong food systems, joining the global School Meals Coalition and developing a national roadmap for the establishment of a national school feeding programme.



## Assisted People by Residence Status

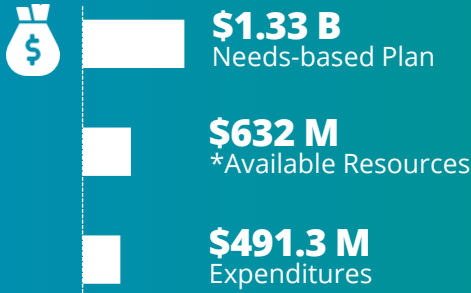


## Assisted People by Modality



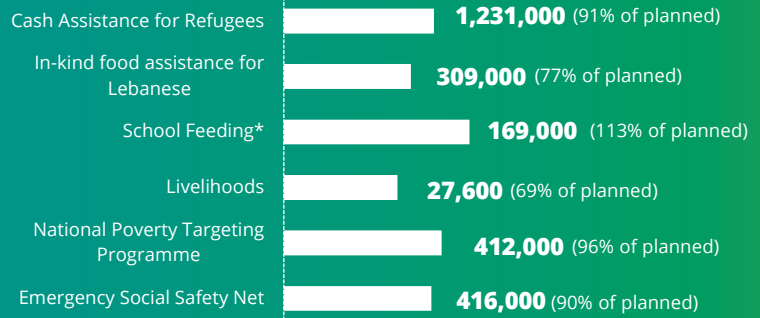
The above numbers of people assisted and the amount transferred do not include the beneficiaries or transfers of the Government's ESSN programme.





\*of which USD 78.8 Million ESSN

## ASSISTED PEOPLE BY ACTIVITY



\*Including take-home rations of sunflower oil

## STRATEGIC OUTCOME 1 CRISIS RESPONSE FOR REFUGEES & LEBANESE

- WFP **re-introduced dual currency redemption for Syrian refugees** in May 2023 enabling assisted families to better meet their needs.
- A **new parcel composition** was introduced in January 2023, providing around 61 percent of the total individual energy requirement, and reducing supply chain costs.
- In September 2023, WFP introduced **locally produced pasta and bulgur to in-kind food parcels** aiming to support the local agrifood economy.

## STRATEGIC OUTCOME 2 BETTER NUTRITION, HEALTH & EDUCATION

- The NPTP shifted towards a household survey model led by **600 social workers trained by WFP**.
- WFP launched a new **'Satellite School Kitchen' modality**, where existing school kitchens expand the production of cold meals to additional students in nearby schools.
- WFP launched the **decentralized procurement approach** linking 9 school kitchens directly to WFP's retailers which ensured financial savings compared to the old procurement model and supported the local economy.

## STRATEGIC OUTCOME 3 MORE RESILIENT LIVELIHOODS

- WFP supported **20 new Lebanese small and medium enterprises (SMEs)** through its Food System Challenge to develop their solutions to key food system challenges, namely access to raw materials, Import substitution, and access to energy.
- WFP provided one-time cash assistance **of US\$ 300 to 1,400 smallholder farmers** across Lebanon supporting the purchase of tools, equipment, and services for harvest and post-harvest operations.

## Donors 2023

Australia, Austria, Canada, Cyprus, European Union, Finland, France, Germany, United Kingdom, Ireland, Italy, Japan, Lebanon's Presidency of the Council of Ministers, Malta, Norway, Private Donors, Republic of Korea, Russian Federation, Switzerland, USA

## STRATEGIC OUTCOME 4 CAPACITY STRENGTHENING OF NATIONAL PROGRAMMES & SYSTEMS

- WFP **trained more than 500 social workers** in the Ministry of Social Affairs (MoSA) on gender and social inclusion, digital data collection, and quality control and initiated the **setup of a call centre operation at MoSA**.
- WFP conducted a **due diligence review of the ESSN and NPTP** to guide the Government in unifying both programmes for improved social assistance.
- WFP supported the Ministry of Education in launching a national school feeding program and in joining **the global School Meals Coalition**. WFP also implemented a digital tracking system in 185 schools for efficient snack delivery monitoring.
- WFP and the Ministry of Agriculture carried out a **satellite-assisted crop-mapping exercise** to provide data and analysis for agricultural interventions aimed at smallholder farmers that could boost local production.

## STRATEGIC OUTCOME 5 ENABLING HUMANITARIAN RESPONSE

- WFP and FAO conducted a wheat value chain study which informs the potential for **wheat flour fortification**.
- WFP also provided financial support to Lebanon's **first Integrated Micronutrient and Anthropometry Survey (LIMA)**.
- WFP provided technical and financial support to the Food Security and Agriculture Sector to conduct **two Integrated Food Security Phase Classification (IPC) analyses**.

