



WFP CAMBODIA

2023 ANNUAL COUNTRY REPORT SUMMARY



SAVING LIVES
CHANGING LIVES



While Cambodia has seen impressive economic growth and poverty reduction, many households remain vulnerable to food and nutrition security. Diets often lack essential nutrients, and malnutrition continues to be a concern. Recognizing these ongoing challenges, compounded by climate change, WFP intensified collaboration with the Royal Government of Cambodia in 2023 to further strengthen social protection systems, climate-resilient food systems, disaster risk management capabilities, and food security & nutrition.

300,000
SCHOOL CHILDREN



49%



51%

reached through the government's & WFP's school meals programme (49% girls, 51% boys)



TECHNICAL ASSISTANCE to government partners on sectors impacting food and nutrition security—including policy development, programme design & implementation, data analysis & monitoring, capacity building and knowledge-sharing initiatives—provided to 8 ministries, enhancing their capabilities and effectiveness in fulfilling their mandates



RESEARCH & ANALYTICS developed and used to drive real-time market insight, climate monitoring, dietary affordability, strengthened social protection systems, and targeted vulnerability guidance



SOCIAL PROTECTION

INSTITUTIONALIZING THE NATIONAL SCHOOL MEALS PROGRAMME

As national ownership of the school feeding programme increases, WFP supported the Government to further institutionalize the programme. Notable achievements include:



SUB-DEGREE #65, THE HIGHEST-LEVEL LEGISLATIVE INSTRUMENT FOR IMPLEMENTING THE NATIONAL HOMETOWN SCHOOL FEEDING PROGRAMME, ENDORSED

50% OF THE 1,114 SCHOOLS IMPLEMENTING THE PROGRAMME TAKEN OVER BY THE GOVERNMENT

A SABER EXERCISE CONDUCTED TO ASSESS THE PROGRESS IN THE INSTITUTIONALIZATION OF THE NATIONAL SCHOOL FEEDING PROGRAMME ALONG FIVE DIMENSIONS: POLICY, FINANCE, CAPACITY, DESIGN, AND COMMUNITY ENGAGEMENT

GUIDELINE ON FOOD SAFETY FROM FARM TO SCHOOL GATE DEVELOPED AND ROLLED OUT TO STRENGTHEN THE CAPACITIES OF THE HGSF SUPPLIERS

MONITORING & EVALUATION FRAMEWORK FOR THE NATIONAL PROGRAMME DEVELOPED TO TRACK PROGRESS, ASSESS EFFECTIVENESS AND ENSURE PROGRAMME ACCOUNTABILITY

WFP-RUN SCHOOL MEALS PROGRAMME

Pending full national ownership, WFP supported 561 schools in 2023:



188,000 SCHOOLCHILDREN RECEIVED DAILY HOT, NUTRITIOUS MEALS COMPOSED OF LOCAL VEGETABLES AND PROTEIN



USD 3.4 MILLION INJECTED INTO THE LOCAL ECONOMY FOR LOCAL PROCUREMENT AND SCHOOL INFRASTRUCTURE



2200+ FACILITIES BUILT/REHABILITATED TO ENHANCE FOOD SAFETY, WATER ACCESS, SANITATION & HYGIENE IN SCHOOLS



5,800+ SMALLHOLDER FARMERS, SUPPLIERS, COOKS, STOREKEEPERS, SCHOOL DIRECTORS AND LOCAL AUTHORITIES TRAINED ON PROGRAMME ENGAGEMENT, IMPLEMENTATION AND INFORMATION SYSTEM



SHOCK-RESPONSIVE SOCIAL PROTECTION

To enhance nationally led responses to shocks and natural disasters, WFP supported the government to establish a systematic and comprehensive approach to shock-responsive social protection, prioritizing improved data capture & vulnerability assessment, response design, financing mechanisms, and coordination. Notable achievements in this area include:

NATIONAL SHOCK-RESPONSIVE SOCIAL PROTECTION FRAMEWORK LAUNCHED BY THE PRIME MINISTER

OPERATIONAL PLAN FOR SHOCK-RESPONSIVE SOCIAL PROTECTION BEING DEVELOPED BY THE GOVERNMENT TO STRENGTHEN THE EXISTING SOCIAL PROTECTION SYSTEM'S EFFECTIVENESS AND RESPONSIVENESS—ENSURING TIMELY SUPPORT DURING CRISES

DISASTER RISK FINANCING OPTIONS EXPLORED FOR IMPLEMENTING NATIONAL SHOCK-RESPONSIVE SOCIAL PROTECTION SCHEMES

THE NATIONAL SOCIAL ASSISTANCE CONTINGENCY PLAN, JOINTLY DEVELOPED AND FINALIZED BY THE NATIONAL SOCIAL ASSISTANCE FUND AND WFP, SERVED AS A RESPONSE FRAMEWORK TO ENSURE CONTINUOUS SUPPORT FOR VULNERABLE POPULATIONS DURING EMERGENCIES





CLIMATE RISK MANAGEMENT

DIGITAL SOLUTIONS

WFP spearheaded the development, enhancement, and utilization of information systems, including the climate vulnerability & risk index and PRISM, a digital hazard monitoring platform tailored to meet the needs of government counterparts responsible for disaster management while also building national information management capacities.



CLIMATE VULNERABILITY AND RISK INDEX FOR CLIMATE-INDUCED HAZARDS DEVELOPED TO INFORM TARGETING AND PRIORITIZATION OF ANTICIPATORY ACTIONS AND RESPONSE DESIGN

PRISM UPGRADED WITH ADVANCED DATA ANALYTICS, API INTEGRATION, LOCAL LANGUAGE SUPPORT, AND POST-DISASTER IMPACT DATA COLLECTION

NATIONAL COMMITTEE FOR DISASTER MANAGEMENT ENDORSED PRISM AS ITS DATA COLLECTION TOOL FOR DISASTER RISK MANAGEMENT

EMERGENCY PREPAREDNESS

WFP supported the government to prepare for efficient and effective emergency response by training stakeholders to operationalise contingency plans and collaborating with universities to build human resources in this sector.

THE NATIONAL FLOOD CONTINGENCY PLAN AND 13 SUB-NATIONAL PLANS ENHANCED WITH WFP SUPPORT

250 OFFICIALS PARTICIPATED IN THE NATIONAL SIMULATION EXERCISES, LED BY THE GOVERNMENT AND WFP, TO ENHANCE COORDINATION AND PREPAREDNESS IN LARGE-SCALE DISASTER SCENARIOS

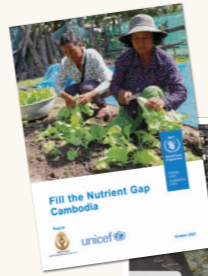
GIS LAB ESTABLISHED IN THE ROYAL UNIVERSITY OF PHNOM PENH AND UNDERGRADUATE CURRICULUM ENHANCED BY INCLUDING GIS AND REMOTE SENSING TECHNOLOGIES FOR DISASTER RISK MANAGEMENT



FOOD SYSTEMS AND NUTRITION

ANALYTICS

WFP focuses on producing high quality analytics to help partners interpret complex food security issues and support decision-making for improved policies and programmes.



FILL THE NUTRIENT GAP ANALYSIS CONDUCTED TO UNDERSTAND THE KEY DRIVERS OF UNHEALTHY DIETS AND CLIMATE RISKS TO FOOD SYSTEMS



12 MARKET BULLETINS PUBLISHED, INTEGRATING MARKET FUNCTIONALITY, LABOUR TRENDS, RAINFALL PATTERNS & SEASONAL VEGETATION MONITORING

ACCESS TO MARKETS

WFP supported local producers to enhance crop productivity, improve quality, provide financial literacy training, and connect them to broader markets, ultimately improving their livelihoods and fostering community resilience.

241 SMALLHOLDER FARMERS AWARDED FARMING CONTRACTS TO SUPPLY 711 MT OF ORGANIC PADDY RICE TO GLOBAL MARKETS AS A RESULT OF WFP-PRIVATE SECTOR PARTNERSHIP

877 LOCAL PRODUCERS AND SUPPLIERS TRAINED ON CLIMATE-SMART VEGETABLE PRODUCTION, BUSINESS LITERACY AND FINANCIAL MANAGEMENT

FORTIFIED RICE

WFP promoted fortified rice to address micro-nutrient deficiencies and improve the nutritional content of diets in vulnerable populations—hence, combating malnutrition and enhancing health outcomes.

900+ MT OF RICE FORTIFIED LOCALLY WITH VITAMINS AND MINERALS TO ENHANCE SCHOOL MEALS

MARKET STRATEGY DEVELOPED FOR COMMERCIALIZING FORTIFIED RICE IN CAMBODIA

SOCIAL AND BEHAVIOUR CHANGE

WFP promoted nutritional awareness through educational campaigns and community-based interventions to empower individuals and communities to make informed choices about their diets.



200,000 CHILDREN & CAREGIVERS IN 675 SCHOOLS BENEFITED FROM A 2-WEEK SOCIAL AND BEHAVIOUR CHANGE CAMPAIGN ON HEALTHY DIETS AND NUTRITION



CROSSCUTTING ISSUES

GENDER

WFP supported gender equality, empowered women and promoted their active participation in various sectors as exemplified by the following achievements:



TRAININGS AND KEY INPUTS PREDOMINANTLY PROVIDED TO WOMEN VEGETABLE PRODUCERS TO ENGAGE THEM IN THE AGRICULTURAL VALUE CHAIN OF THE HOMETOWN SCHOOL FEEDING PROGRAMME

SOCIAL AND BEHAVIOR CHANGE COMMUNICATION CAMPAIGN IMPLEMENTED, TARGETING MEN AND EMPHASIZING THEIR PARTICIPATION IN MEAL PREPARATION AT HOME TO IMPROVE THE CHILDREN'S NUTRITIONAL DIETS

GENDER MAINSTREAMED IN THE NATIONAL ACTION PLAN FOR DISASTER RISK REDUCTION

ENVIRONMENT

WFP promoted eco-friendly practices in its programme as demonstrated by the following accomplishments:

40 ENERGY-SAVING STOVES AND 57 WATER-EFFICIENT HAND-WASHING STATIONS AND WELLS CONSTRUCTED IN SCHOOLS

613 PRODUCERS TRAINED ON SUSTAINABLE ORGANIC FARMING, ENCOMPASSING ENVIRONMENTAL PROTECTION, NATURAL RESOURCE MANAGEMENT AND WILDLIFE CONSERVATION.



LEARN MORE

ABOUT OUR ANNUAL COUNTRY REPORT



WEB VIEW



PDF



WFP CAMBODIA

GOVERNMENT PARTNERS



UN AND NGO PARTNERS



DONORS

