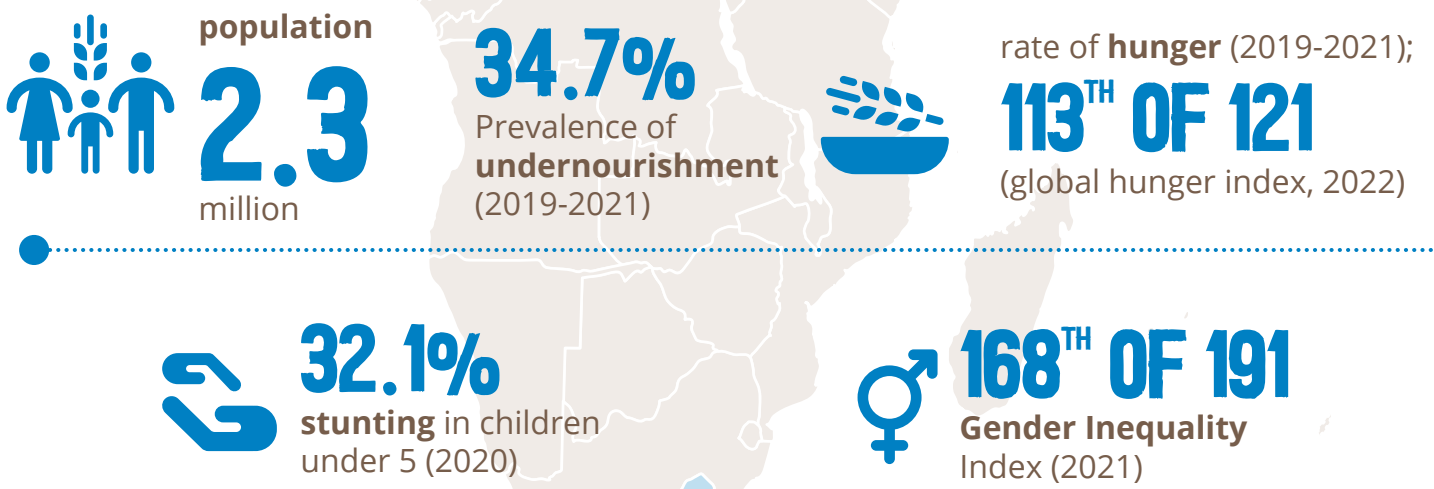
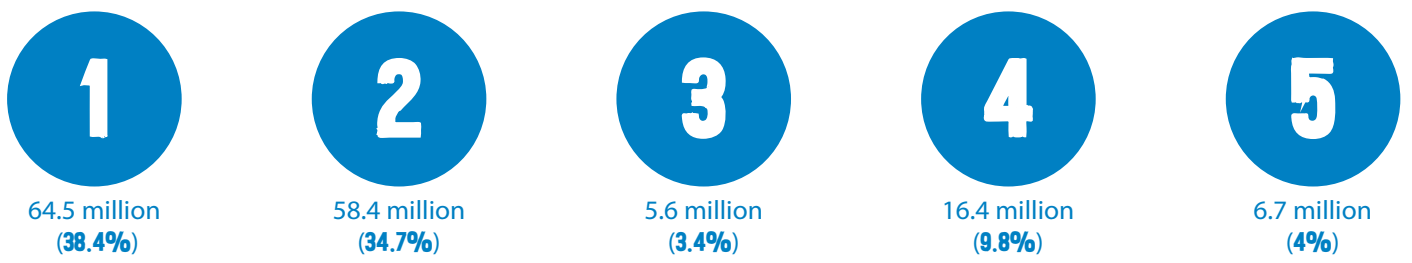


COUNTRY CONTEXT



COUNTRY STRATEGIC PLAN (CSP) focused on five strategic outcomes



CSP budget 168.1 USD million | 35% funded

January 2023 • **EVALUATION** • October 2023

KEY FINDINGS & CONCLUSIONS

STRATEGIC POSITIONING AND ALIGNMENT



CSP informed by national reviews and evaluations, though limited analysis of Lesotho's livelihood challenges. Nutrition not sufficiently integrated



Grounded in WFP comparative advantage, strategic focus remained relevant; challenges linking humanitarian and development programming

CONTRIBUTIONS TO CSP OUTCOMES



Flexible response to fluctuating beneficiaries caseload; contributing to food security during emergencies in rural and urban areas



National school feeding programme implemented in pre-primary centres with WFP support, but not all vulnerable children covered



Enhanced national capacities for evidence-based food security and nutrition programming

EFFICIENT USE OF RESOURCES



Rapid response to Covid-19 pandemic. Timely delivery sometimes affected by procurement challenges, despite efforts to strengthen systems



Rations reduced to maintain coverage. Food insecure districts targeted, but most vulnerable not always reached due to information delays

FACTORS THAT EXPLAIN WFP PERFORMANCE



Effectiveness and coverage affected by funding constraints and shortfalls, compromising programme coherence



Output data used for accountability and operational decisions, limited use of outcome monitoring for strategic decision-making



Partnerships provided key skills in gender and protection. Joint implementation was limited



Skillset was adequate for country capacity strengthening focus, but understaffing meant functions overstretched

RECOMMENDATIONS

- 1** Reinforce and diversify approach to capacity strengthening across new CSP
- 2** Reconsider approaches to resilience building and the humanitarian-development nexus in Lesotho
- 3** Strengthen targeting and prioritization at the national level by supporting the Lesotho Vulnerability Analysis Committee and community-based approaches
- 4** Strengthen engagement with the national social protection system to reinforce humanitarian-development nexus
- 5** Strengthen country office capacity to align with emerging roles while making best use of limited resources

KNOW MORE

Brief

Summary Report

Full Report