



World Food Programme

SAVING LIVES  
CHANGING LIVES

# World Food Programme Malawi 2023 Annual Country Report

## 2023 HIGHLIGHTS



**FULL REPORT**  
([read it here](#))

In 2023, amid a 131 percent increase in acute food insecurity, WFP provided food assistance to 2.5 million people.

WFP provided USD 28 million in cash-based transfers and distributed 15,000 mt of food through relief, school meals and resilience activities.

As co-lead of the national logistics cluster, WFP provided emergency logistics services in response to the Tropical Cyclone Freddy, the lean season and cholera responses by truck, air and boat.

## 2023 ACHIEVEMENTS IN NUMBERS



USD 119 million received

USD 137.5 million Planned  
(Needs Based Plan)

## FINANCIAL OVERVIEW

In 2023, WFP received USD 119 million, which accounted for **87 percent** of its annual needs-based plan requirement. Despite these contributions, there were shortfalls in certain areas such as refugee support, social protection, nutrition prevention, and vulnerability analysis and mapping. As a result, ration cuts and targeting adjustments were necessary for refugees, and activities under social protection, nutrition prevention, and vulnerability analysis and mapping were scaled down. The country strategic plan (CSP) benefited **from international donor funding, private sector support, and multilateral funds.**

## CROSS CUTTING RESULTS



In 2023, WFP scaled up crop insurance and savings and loan groups which helped **16,500 female-headed households** cope with climate shocks and improve their financial security.

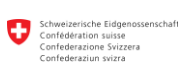
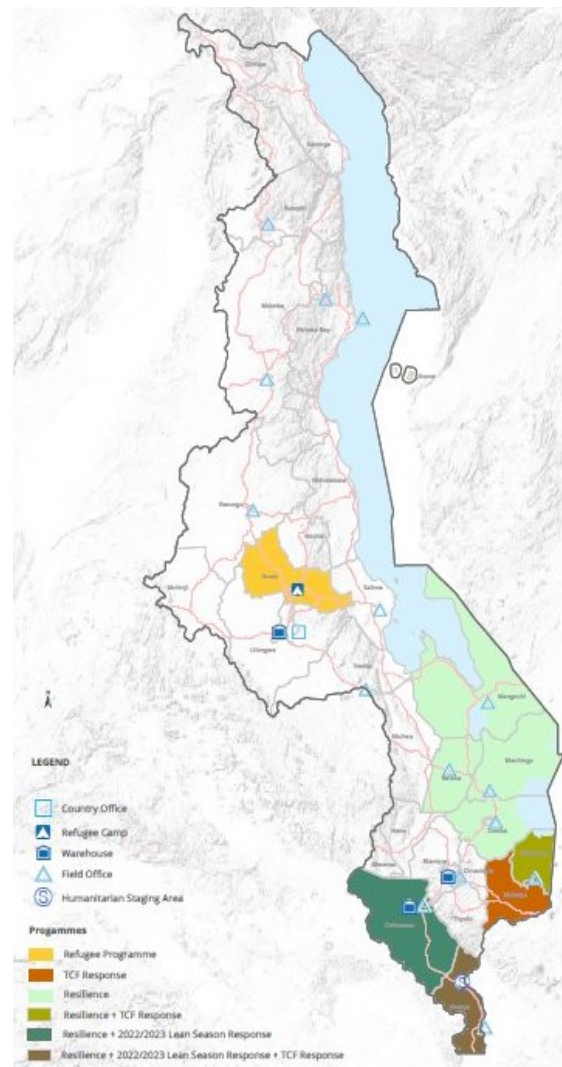


During all distributions, WFP ensured that food needs were met **safely, accountably, and with dignity**, respecting the **integrity of the people** served and avoiding discrimination, abuse, violence, or exploitation. Post-distribution monitoring found that 87 percent of beneficiaries surveyed in WFP's integrated resilience activity reported being treated with dignity.



WFP promoted energy-efficient cooking solutions to **reduce deforestation** by rolling out a pilot project on solar electric cookstoves among refugees and Malawian farmers participating in the integrated resilience intervention.

## OUR FINANCIAL PARTNERS



Swiss Agency for Development and Cooperation SDC

**Strategic outcome 1: Shock-affected people, including refugees, have access to nutritious food all year long**



**709,328** people affected by Tropical Cyclone Freddy received in-kind food and cash



**543,641** people received food and cash-based transfers during the lean season



**51,792** refugees received cash-based transfers

**Strategic outcome 2: Vulnerable populations in food-insecure communities benefit from strengthened shock-responsive social protection systems**



**669,410** children benefitted from the Home-Grown School Feeding and **422,811** learners were assisted with take-home rations

The attendance rates improved by 0.7 percent, reaching **92.4 percent**



**19,000** farmers supplied food directly to the schools, and **337** school gardens were revitalised



**35,000** farmers linked to home-grown school feeding were trained in business management, market-oriented crop planning, post-harvest loss mitigation, and crop diversification



**Strategic outcome 3: Targeted populations in Malawi have improved nutritional status in line with national targets**

**1.3 million** beneficiaries were reached with nutrition information

**226** care group members participated in village savings and loans initiatives to promote nutrition information sharing and savings to enhance household nutrition



The minimum diet diversity score for women and girls of reproductive age improved from **26 to 37** percent.

**Strategic outcome 4: Smallholder producers and vulnerable populations in Malawi have enhanced resilience, through diversified livelihoods, increased marketable surpluses and access to well-functioning food systems and efficient supply chains**



**118,000** households benefited from food assistance for assets activities



**1,600** smallholder farmers engaged in contract farming in the cotton and soya value chains



**2,500** savings and loan groups were supported to increase rural access to financial services



**26,000** farmers were covered by area yield index insurance, triggering payouts of USD 1.2 million



Agro-advisories and weather forecasts were provided to **58,000** farmers

**Strategic outcome 5: National and local institutions, agencies and enterprises, in Malawi have increased capacity and improved supply chain systems to achieve sustainable development goal 2, zero hunger.**



40 Malawi Vulnerability Assessment Committee technical members enhanced their **food and nutrition security analysis competencies**



228 district-based staff received the **climate early warning messages**

**Strategic outcome 6: Humanitarian and development partners in Malawi have access to increased emergency services throughout the crisis.**

**18,000 mt** of food and non-food items were transported by road, boat, and air

**400 mt** of cholera supplies transported to affected areas and **27** emergency cholera treatment centres supported

Information management services provided to improve the **collection, analysis, and dissemination** of logistics information

Emergency **drone** assessments conducted during the cyclone response

Routine bilateral logistics services provided to **humanitarian partners**