



World Food Programme

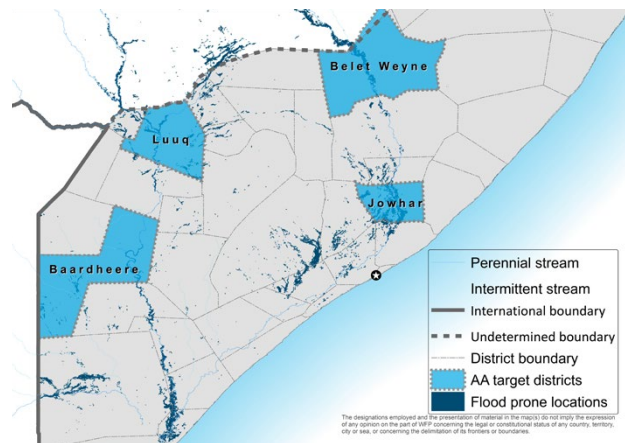
SAVING LIVES
CHANGING LIVES

2024 Anticipatory Action Ahead of Riverine Floods

WFP leverages weather forecasts to minimize and mitigate climate change-induced flood impacts in Somalia

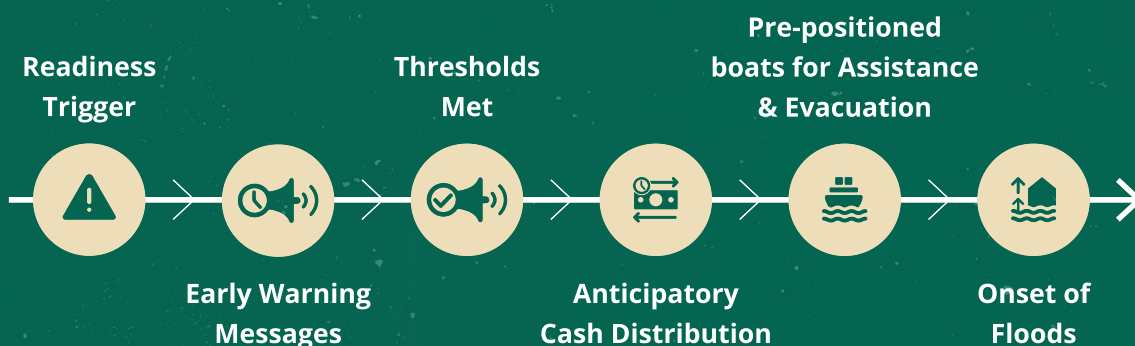
In April 2024, WFP Somali Disaster Management Agency (SoDMA) activated an Anticipatory Action plan to mitigate the anticipated impact of floods in the cities of Baardheere, Luuq, Jowhar, and Beletweyne. This was the second activation of the Somalia Anticipatory Action Plan, following the anticipatory action activation in October 2023 ahead of significant El Niño induced floods. Building on lessons learned from the previous activation, WFP and its partners refined flood risk communication strategies and carried out community sensitization campaigns. Weather forecasts for March to May 2024 predicted above-average rainfall, increasing

flood risks along the Jubba and Shabelle rivers, in the southern part of the country.



January 2025

ANTICIPATORY ACTION PLAN ROLL OUT



When predefined triggers were met on April 19, the following key anticipatory actions were implemented:

- **Early warning (EW) messages were sent to 1.9 million people** starting on 19 April, focusing on flood protection measures for safeguarding lives and assets. These messages were shared through various channels, including local radio broadcasts, caller ring-back tones, and social media. Local authorities, religious leaders, and community elders played a critical role in raising awareness by organizing public gatherings and holding meetings in schools and mosques.
- **US\$ 1 Million anticipatory cash assistance was distributed to 80,000 individuals** across the four districts. This assistance enabled communities to purchase essential food supplies and cover other critical needs, such as transporting to evacuate from flood-prone areas to higher ground.
- **14 strategically prepositioned boats were immediately deployed** by WFP and the Logistics Cluster to support the evacuation of communities living in flood-prone areas. These boats were critical in ensuring the timely and safe relocation of affected populations to safer locations.

“ I found the early warning messages’ content remarkably easy to understand. One key factor that contributed to this clarity was the delivery of the messages in the local dialect, both on the local radio and through the Hormuud ringback tone. This ensured that the information was relatable and comprehensible to our community. ”

AA support recipient, Jowhar

“ The cash transfer from WFP saved my life during the floods. Thanks to it, we could buy food, rent a boat to get more supplies across the river, and support my family and others in our community. It made a huge difference in getting everyone the food they needed during such a difficult time. ”

AA support recipient, Beletweyne

These anticipatory actions were designed to achieve the following objectives:

- 1. Enhance access to early warning information:** Increase households' and communities' access to timely and actionable early warning information, empowering them to make informed decisions related to flood risk management.
- 2. Safeguard lives and assets:** Enable supported households to protect their lives, as well as their household and livelihood assets, from the impact of flooding.
- 3. Maintain food security:** Support targeted households in preserving their food consumption status during and after the flood.



Impact Evidence

Households supported through Anticipatory Action (AA) maintained better food consumption levels

Households supported through AA demonstrated higher acceptable food consumption scores (46 percent) than households receiving post-flood assistance (42 percent) and no assistance (18 percent). The evidence demonstrates AA's potential to enhance households' dietary diversity, food consumption frequency, and relative nutritional value of different food groups.

Households supported through AA portrayed better resilience and ability to cope against climate shocks

Most households (63 percent) benefiting from AA were found less likely to rely on negative coping strategies such as consuming less expensive food, borrowing food or relying on help from relatives or friends, limiting meal portions, and reducing number of meals skipped in a day.

Similarly, only a small portion of households (22 percent) supported through AA were likely to secure food or money for food at the expense of their livelihood assets, including mortgaging a house or land, begging, and engaging in socially degrading, high-risk, exploitive, or life-threatening jobs.

Diversified dissemination of early warning messages ensured optimal coverage, while timely delivery of information translated to informed decision-making

A majority of households (66 percent) confirmed receiving climate-related information and early warning messages prior to the onset of floods – with caller ring-back-tones proving to be the most effective channel of information relay.

87 percent of households supported through AA received early warning messages in an easy-to-understand and timely manner and were further able use and adapt the information to protect themselves and their livelihoods against floods.

Key Learnings

- **Prioritize Anticipatory Actions:** Future interventions should prioritize anticipatory actions based on past lessons and weather trends.
- **Prioritize Early Delivery of Messages:** Deliver early warning messages as soon as the climate hazard is forecast.
- **Prioritize Community Engagement:** Improving information sharing fosters ownership and sustainable benefits.
- **Ensure Safe Access for Women and Girls:** Provide gender-segregated spaces and secure facilities.
- **Enhance Collaboration:** Working collaboratively with stakeholders is essential for the effective monitoring of forecasts and trigger activation.
- **Enhance Clarity in Messaging:** Future early warning messages should clearly convey disaster intensity for better decision-making.
- **Ensure Adaptability:** Design anticipatory actions that address changing climate conditions and incorporate gender-responsive measures.



With support from:



**MINISTRY OF FOREIGN AFFAIRS
OF DENMARK**



World Food Programme

Via Cesare Giulio Viola 68/70,
00148 Rome, Italy - T +39 06 65131
wfp.org/anticipatory-actions

Photo page 1: WFP/Arete/Abdirahman Yussuf Mohamud
Photo page 3: WFP/Gabrielle Menenez
Photo page 4: WFP/Arete/Abdirahman Yussuf Mohamud