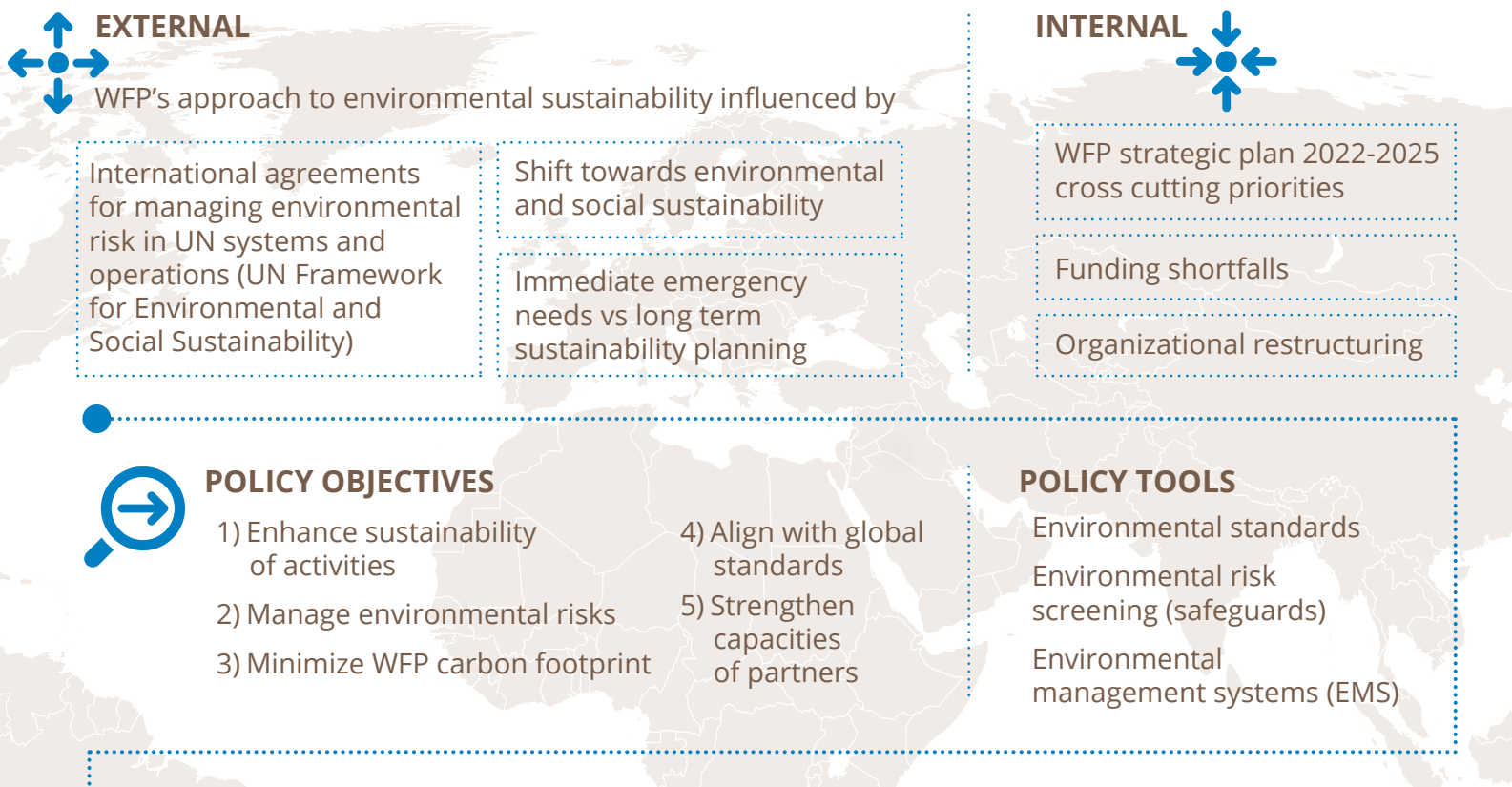


## GENERAL CONTEXT



## METHODOLOGY

Theory of Change participative reconstruction  
External review (ICRC, UNHCR, UNICEF, Cargill)



## KEY FINDINGS & CONCLUSIONS



## RECOMMENDATIONS



- 1 Establish a stronger approach and governance structure
- 2 Ensure that Safeguards are applied across all country strategic plan activities
- 3 Improve the extent to which environmental and social sustainability is addressed by the EMS and broaden its application
- 4 Strengthen monitoring of environmental and social sustainability across WFP