

WFP PHILIPPINES

2024 Annual Country Report Overview



TOWARD A FOOD-SECURE, RESILIENT PHILIPPINES

Under its Country Strategic Plan 2024-2028, WFP continued to support the Government in achieving food and nutrition security through long-term development initiatives and timely emergency assistance, amid climate hazards, sporadic conflict, and other shocks.

PEOPLE REACHED

178,000 people directly reached through cash, food, and voucher assistance



60 million people indirectly served through WFP's programmes and government capacity strengthening support

2024 MILESTONES



Eight government-led emergency operations augmented to address the immediate needs of crisis-affected communities



Government disaster risk management capacities, assets, and infrastructure enhanced through WFP's Preparedness and Response Excellence in the Philippines (PREP) programme



Supported the pilot implementation of Walang Gutom (No Hunger) 2027: Government food e-voucher program



Launched the National School-based Feeding Program using a home-grown school feeding model in the Bangsamoro Autonomous Region in Muslim Mindanao (BARMM) and Isabela Province, Luzon



DISASTER RISK MANAGEMENT

EMERGENCY PREPAREDNESS

Through its multi-year PREP programme, WFP provided technical support in enhancing national and sub-national disaster risk management systems and capacities to better prepare for emergencies.



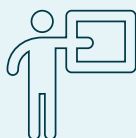
8.4 million people

indirectly benefit from disaster risk management systems strengthened with the support of WFP



PHP 522 million

(US\$9 million) worth of agricultural produce potentially generated through sustainable initiatives under Project LAWA at BINHI with WFP's support, indirectly benefitting **876,000 people**



1,200 government and partner staff

engaged in capacity strengthening initiatives in disaster risk management



Assessed existing DRM capacities of the DSWD and eight PREP priority provinces using the Emergency Preparedness Capacity Indicator tool to inform further capacity investments



Co-delivered capacity strengthening initiatives on policy development, systems enhancement, digitalization, warehouse management, design and improvement of training manuals and courses, and equipment and skills transfer



Supported the Government in **expanding the adaptive social protection programme Project LAWA at BINHI** across 310 local government units, strengthening household and community resilience to shocks



Convened 200 disaster risk reduction experts in the **2024 PREP Forum** to share good practices and innovations in DRM



Facilitated **2 learning visits** with Indonesia (on mobile food kitchen solutions) and Malaysia (on supply chain innovations)



Co-developed a **mobile food kitchen** prototype used by DSWD to independently procure 15 additional units with national resources

DISASTER RISK MANAGEMENT

EMERGENCY RESPONSE

Complementing the Government's crisis response to eight emergencies (including the Q4 2024 typhoons), WFP delivered technical support, emergency logistics and telecommunications services, and nutrition-sensitive cash assistance to disaster-affected communities.

2.6 million people

reached with government family food packs through WFP's transport support



112,700 people

in five provinces provided with cash assistance through the Department of Social Welfare and Development's (DSWD) 4Ps social protection programme and a joint UN anticipatory action programme

358 trucks

and 14 cargo containers mobilized to transport more than 527,000 family food packs and over 170 mt of non-food items

6,000 people

connected to the internet through WFP's emergency telecommunications support during the typhoon season

3 units

of Government Emergency Communications System-Mobile Operations Vehicle for Emergencies (GECS-MOVE) turned over to DICT, bringing the total to 9 units strategically prepositioned nationwide



Hope after storms: WFP supports typhoon-stricken Philippines



Marissa Gonzaga, a mother from Camarines Sur, recounted the nightmare her family experienced due to severe tropical storm Kristine.

"The flood was very strong, and most of our belongings were swept away," she says. "Our clothes. My children's school bags. The eggs we sell for our livelihood. We couldn't cook because our kitchen was destroyed."

The cash assistance from DSWD and WFP provided much-needed relief, enabling Marissa to secure food for her family and restart their small egg business. "Our family is OK; there's nothing more I could ask for," she said.

Read more here: [Country Office Story](#)

INTEGRATED RESILIENCE

WFP strengthened national and sub-national disaster risk reduction and climate adaptation capacities towards enhancing food value chains and community resilience to shocks, particularly in conflict-affected areas in BARMM.



RESILIENCE STRENGTHENING



50,000 people supported with **livelihood activities** for three months in Maguindanao and Lanao del Sur provinces.

WFP provided **50 kg of fortified rice** per month to smallholder farmers and fisherfolks, former combatants, Indigenous Peoples, and conflict-afflicted populations as they built community assets.

186 ha (equivalent to 4,464 basketball courts) of community gardens built/rehabilitated

70 ha (equivalent to 1,680 basketball courts) of land forested

30 km of irrigation canals built/restored

20 **licensed cooperatives** in BARMM linked to public institutions via **Farm2Go**, a WFP platform that connects smallholder farmers to markets to earn better prices

60,300 people reached with **nutrition messages** through various media channels and WFP-trained local health workers

EARLY WARNING SYSTEMS AND ANTICIPATORY ACTION (AA)



Continued preparatory activities for the **UN joint programme on AA**. Under this initiative, WFP stands ready to provide more than 44,000 pre-registered families with early warning information and unconditional cash assistance three days before a severe typhoon (wind speed: 154 km/h or higher).



Supported the development and institutionalization of the **Declaration of State of Imminent Disaster bill**, which would allow government agencies to access funds for early mitigation measures before a state of calamity is declared



Completed a **baseline study** for the Green Climate Fund project, “Multi-hazard Impact-based Forecasting and Early Warning System”

SOCIAL PROTECTION

WFP strengthened the delivery of shock-responsive and nutrition-sensitive social protection programmes to improve people's food security and resilience against risks and shocks.



WALANG GUTOM (NO HUNGER) 2027: GOVERNMENT FOOD E-VOUCHER PROGRAM



WFP worked with DSWD in designing and implementing the pilot of Walang Gutom, a flagship government social protection programme that aims to reduce malnutrition and food insecurity through electronic food vouchers.

12,300 people

in five regional areas reached with food e-vouchers (worth PHP 3,000 or US\$55 each) and healthy nutrition messages.

Families used the amount to purchase nutritious food items from accredited retailers and smallholder farmers' cooperatives.

61 percent

of retailer establishments, including cooperatives, participating in the pilot implementation were women-managed

Co-developed the Walang Gutom operations manual and other knowledge products for the ongoing scale-up to reach 750,000 families by 2027

HOME-GROWN SCHOOL MEALS



WFP provided technical support and capacity strengthening to the Government in implementing the National School-based Feeding Program using the home-grown school feeding (HGSF) model in BARMM and the Province of Isabela in Luzon.

3,200 schoolchildren

received hot, nutritious meals daily, indirectly benefitting 3 million people in supported BARMM provinces (including 900 smallholder farmers and their families)

Conducted a value-for-money study and policy analysis of Republic Act No. 11037 to advocate for the scale-up of the school meals programme integrating HGSF

PHP 1.5 million (US\$27,160)
earned by seven farmer cooperatives linked to HGSF in 2024

CROSS-CUTTING RESULTS

WFP contributed to delivering nutrition-sensitive, inclusive, and environment-friendly strategies to address malnutrition and food insecurity, ensuring no one is left behind.



NUTRITION



Continued providing **technical support to the Government and the Scaling Up Nutrition movement** to address the underlying causes of malnutrition

Trained stakeholders on **school menu development, food safety and quality, and conduct of social and behaviour change (SBC) activities**

Co-designed the **SBC strategy and action plan for the Walang Gutom Program** scale-up to enhance dietary diversity, feeding and caring practices, and livelihood skills

Continued to support the Government in developing the **rice fortification strategic and operations plan**, to be integrated into the national food fortification strategic plan

GENDER AND PROTECTION



Published the findings of the **“leave no one behind” study** which i) identified groups inadequately covered by government social protection programmes and ii) recommended policy improvements on social protection coverage and adaptation to individual needs

Supported the development of standard operating procedures and contingency plan on **protection from sexual exploitation and abuse (PSEA)**, as co-lead of the Philippines PSEA inter-agency network

ENVIRONMENTAL SUSTAINABILITY



Supported the Government in **integrating environmental protection and conservation** in key programmes, including Project LAWA at BINHI and livelihood activities in BARMM

Utilized sea freight to transport humanitarian assistance, **reducing carbon emissions by 16.25 mt** (equivalent to more than one round trip between Manila and Washington D.C.)

Read the full 2024 Philippines Annual Country Report



WEB-BASED REPORT



PDF COPY

WFP thanks our development partners



Contact us

Communications, Partnerships, and Reports Unit
WFP Philippines
wfp.philippines@wfp.org
11th floor, South Tower, Rockwell Business Center Sheridan,
corner of Sheridan and United Streets
Mandaluyong City, 1554, Philippines



The designations employed and the presentation of material in the map(s) do not imply the expression of any opinion whatsoever of WFP concerning the legal or constitutional status of any country, territory or sea area, or concerning the delimitation of frontiers.