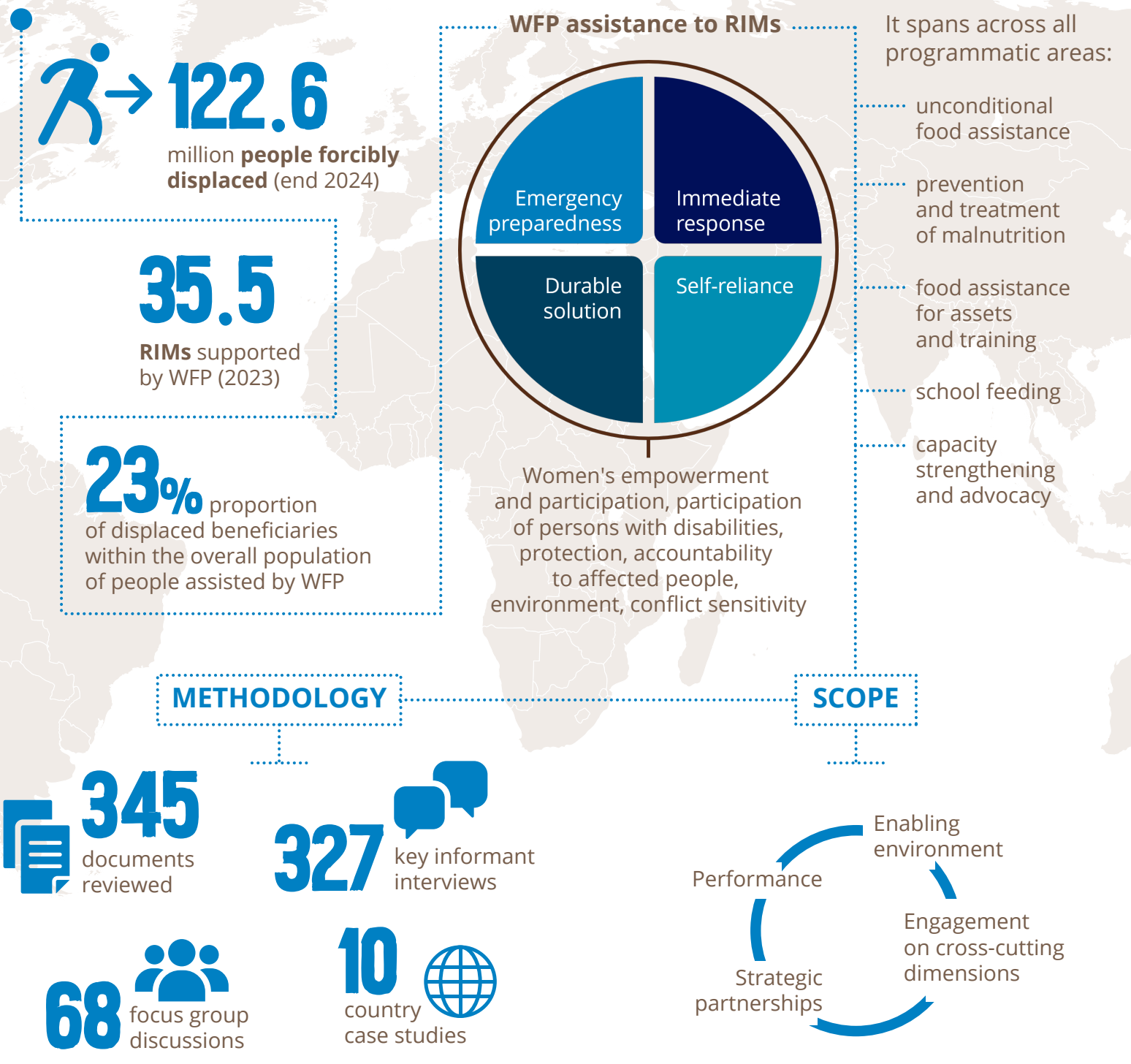


## GENERAL CONTEXT



January 2017 • **EVALUATION** • July 2024

## KEY FINDINGS & CONCLUSIONS

### STRATEGIC RELEVANCE

WFP's policies aligned with Global Compacts, however no corporate policy which explicitly addresses refugees, internally displaced people (IDPs) or irregular migrants



WFP support determined by recognition and prioritization of refugees, IDPs and irregular migrants by governments



Insufficient corporate guidance, especially on irregular migrants



WFP is able to achieve scale quickly and contribute significantly to addressing immediate needs of RIMs



Important contributions to the integration of RIMs in national systems in some countries



Room to improve approaches towards self-reliance and nutrition of RIMs

### EFFECTIVENESS



Very limited assistance provided to irregular migrants

### UNDERSTANDING & INTEGRATING SPECIFIC RIMS VULNERABILITIES AND RISKS



Assessments not designed to understand intersecting vulnerabilities and assistance not targeted to specific needs of RIMs



Limited ability to estimate and analyze contributions to specific outcomes for RIMs populations



Significant efforts made to improve feedback mechanism



Limited capacity to:

- address protection risks faced by RIMs beyond distributions
- respond to feedback from targeted population groups, including on sexual exploitation and abuse

### PARTNERSHIPS AND RESOURCES IN SUPPORT TO RIMS



Need for greater leadership, collaboration and clarity on roles and responsibilities



Scope to improve engagement with governments, regional institutions, international financial institutions, other UN agencies, and cooperating partners



WFP's support to RIMs at scale and on self-reliance limited by short-term, decreasing earmarked funding



Staff capacity gaps in displacement, migration, self-reliance programming and protection of RIMs

## RECOMMENDATIONS

1

Formulate a clear strategic vision and corporate position on displaced people and irregular migrants

2

Specify the programme offer and partnerships required to integrate RIMs from preparedness to durable solutions

3

Strengthen WFP's data systems and analytical capacity to understand RIMs, inform programming and coordination

4

Ensure that all WFP support to RIMs duly considers gender, protection, accountability and risks

5

Strengthen partnerships with mandated agencies and address gaps in analysis, data sharing, and coordinated RIMs support

6

Strengthen WFP's resource mobilization to meet displaced people and irregular migrants' needs and support early transition

KNOW MORE

Brief

Summary Report

Full Report