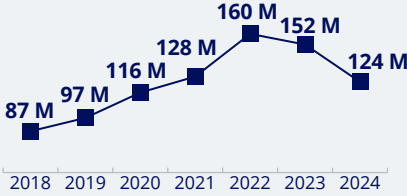


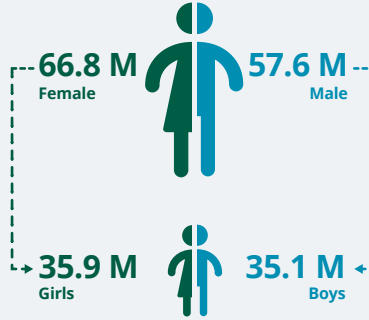
BY YEAR

Total number of people reached in 2024

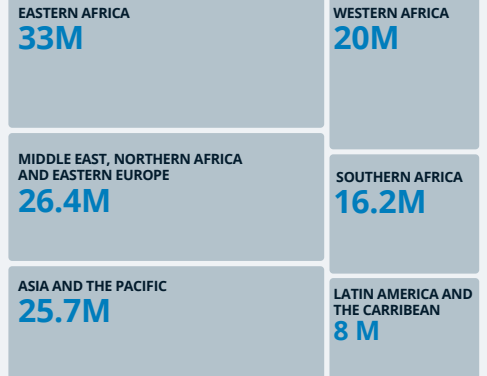
124 M



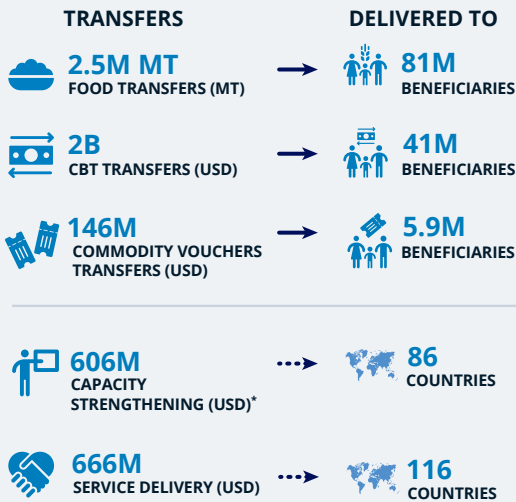
BY SEX AND AGE



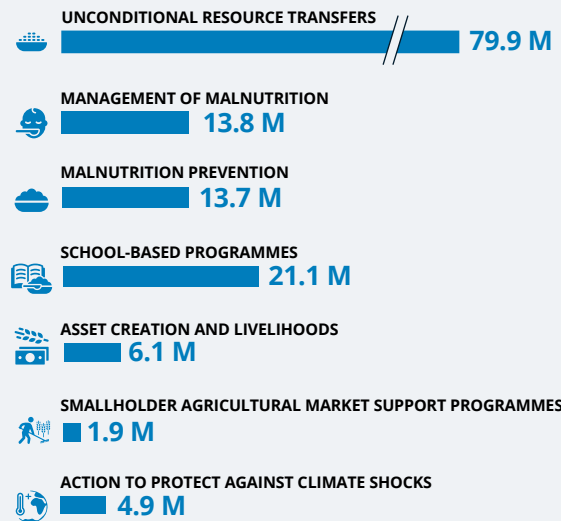
BY REGION



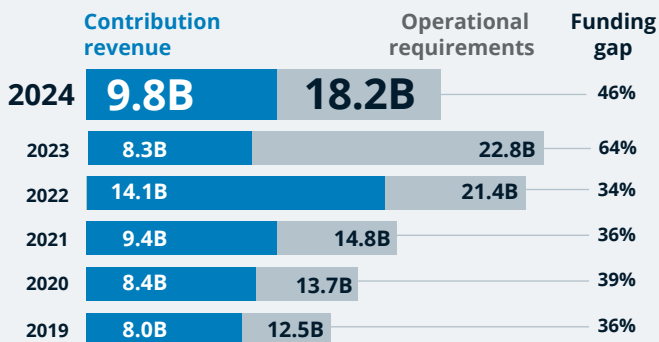
BY TRANSFER MODALITY



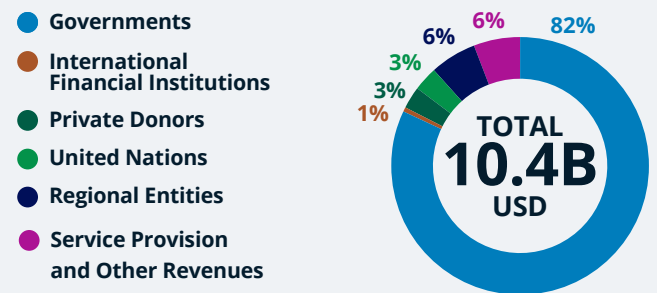
BENEFICIARIES REACHED BY PROGRAMME AREAS



CONTRIBUTIONS VS NEEDS (USD)

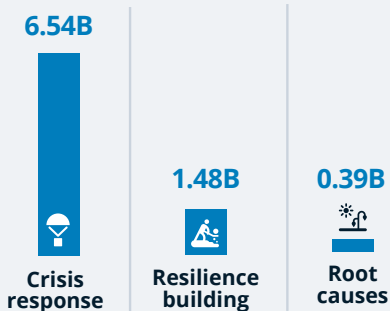


REVENUE BY SOURCE

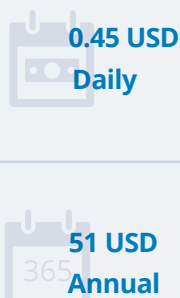


Flexible funding accounted for USD 1.1 B out of the total

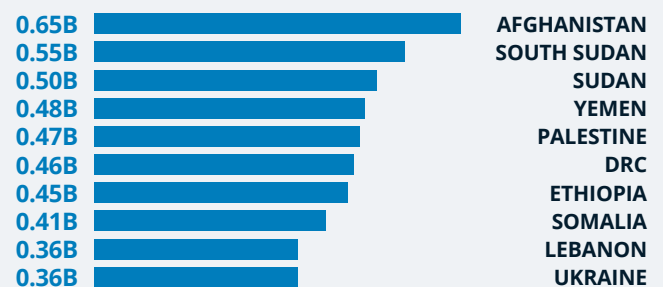
DIRECT EXP. BY FOCUS AREA (USD)



DIRECT EXP. BY BENEFICIARY



DIRECT EXPENDITURES BY COUNTRY (USD)



Direct expenditures exclude indirect support costs

Direct expenditures exclude indirect support costs

Direct beneficiaries reached

Expenditures & contributions