



World Food Programme

SAVING  
LIVES  
CHANGING  
LIVES

## WFP Bolivia Country Brief June 2025

CBT distributions begin for families affected by floods in Beni, improving their access to food. © WFP

## In Numbers

**72,800 USD /month (Own funds PMA May - June 2025 WFP May - June 2025),** beneficiary population 728 families (approximately 3,640 people, with an average of 5 people per household). Each family received 100 USD (This covers approximately 75% of the Minimum Basic Food Basket in Bolivia).

## Operational Context

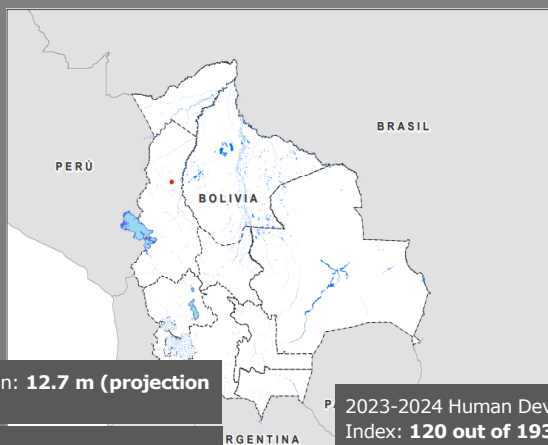
The Ministry of Development Planning (MPD) has issued a statement of its commitment to food security through policies that encourage production, technical irrigation, and strengthening family agriculture, which are essential to ensure self-sufficiency and access to food in the country for the benefit of Bolivian families.

The Chargé d'Affaires a.i. of Bolivia in Italy, at the closing of the International Year of Camelids, highlighted the effort of more than 80,000 Bolivian families who make a living from camelid breeding and who are also guardians of ancestral knowledge and protectors of fragile high Andean ecosystems.

The National Institute of Statistics (INE) has reported that the monthly variation of the Consumer Price Index (CPI) for June increased by 5.21% compared to May. The CPI for the food and non-alcoholic beverages component for June was 8.5%, with the food products that saw the largest increases being: boneless beef, chicken, lunch meat, bone-in beef, onion, and potato.

According to data from the INE, in one year (from June 2024 to June 2025), food has increased by nearly 38%.

The Ministry of Government has declared that the roadblocks caused by political reasons linked to the national elections have affected the rise in food prices and also the supply of fuels.



Population: **12.7 m (projection 2025)**

Income Level: **Lower middle**

2023-2024 Human Development Index: **120 out of 193 (IDH: 0.698) - PNUD**

## Operational Updates

- The Departmental Legislative Assembly of Oruro, by means of Departmental Law No. 267 of March 26, 2025, has decreed: 'Declaration of Departmental Disaster due to Floods in Municipalities of the Department of Oruro.'
- The WFP in Bolivia has carried out humanitarian assistance for the floods in the municipalities of the Department of Oruro affected; reaching 91% execution compared to what was planned.

Contact info: [wfp.lapaz@wfp.org](mailto:wfp.lapaz@wfp.org)

Country Director: Alejandro López-Chicheri

Further information: [WFP Bolivia](https://www.wfp.org/countries/bolivia)

**Country Strategic Plan (2023-2027)**

Total Requirement (in USD) June 2025	Assigned Contribution (in USD) June 2025	Difference in USD compared to the planned
<b>80,000</b>	<b>72,800</b>	<b>7,200</b>

**Strategic Result 1: Everyone has access to food. SDG 2.1**

**Country Strategic Outcome 1:** Food insecure and vulnerable households affected by shocks in Bolivia benefit from anticipatory action, prevention, emergency preparedness, coordination, and response support to meet their diverse emergency food and nutrition needs and quickly recover.

**Focus area:** *Crisis Response.*

**Activities:**

During the month of June, the Country Office (CO) of Bolivia implemented activities within the framework of Activity 1 of the CSP 2023–2027, corresponding to Outcome 1: Crisis Response, through the modality of Cash-Based Transfers (CBT).

In the month of June, the implementation of assistance continued in the Department of Oruro in response to the floods, in coordination with the Oruro departmental government (GADOR) and the Agricultural Insurance Institute (INSA), with the aim of ensuring that all beneficiaries had effective access to humanitarian assistance.

**Strategic Result 3: Smallholders have improved food security and nutrition through improved productivity and incomes. SDG 2.3**

**Country Strategic Outcome 2:** Food insecure smallholder farmers, indigenous communities, and particularly rural women in Bolivia are more resilient to climatic and other shocks and stresses, including through sustainable livelihoods, consistent incomes, improved productivity, and market access and demand.

**Focus area:** *Resilience Building.*

**Activities:**

As part of Activity 4, information gathering was carried out in rural and indigenous communities to focus on the municipalities considered in the Joint Program 'Strengthening Sustainable Food Systems in the Bolivian Amazon to Live Well in Harmony with Mother Earth (AMAS-1)'.

**Strategic Result 5: Countries strengthened capacities to implement the SDGs. SDG 17.9**

**Country Strategic Outcome 3:** Local, regional, and national level institutions have improved capacity, coordination, programme, and policy coherence related to supporting most vulnerable groups in Bolivia by 2027.

**Focus area:** *Root Causes.*

**Activities:**

Participation in the "Hospital Ship" Mission, in coordination with the United Nations System (UNS) and government counterparts, strengthening collaboration with the Vice Ministry of Civil Defense (VIDECI) and its decentralized instances.

Coordination with Municipal Governments of Beni for the implementation of the CERF project. Technical meetings with VIDEI in support of the CERF response, to align institutional priorities and optimize the use of resources and technical capacities of the UN system.

- Monitoring**

- The distribution monitoring (DM) in Oruro was carried out, in which the following indicators were reported:

Indicator	Men	Women
% Interviewed Persons	<b>50.8</b>	<b>49.2</b>
% illiteracy	<b>2.3</b>	<b>8.3</b>
% Disability	<b>1.4</b>	<b>1.3</b>
% Identification with an Indigenous Ethnic Group (18-59 years old)	<b>24.0</b>	<b>27.0</b>
% Pregnant Women		<b>3.0</b>

- Interviews with communities in Beni to identify needs in the municipalities of Filadelfia, Sena, Riberalta, Gonzalo Moreno, and San Pedro under the AMAS-1 Joint Project.

- Partnerships**

- Approach to strategic allies for the identification of synergies and possibilities for joint applications to funding windows, planning actions with the Global Pact in the framework of the Agro sustainability and food security table, preparation of projects for application for funding with the Embassy of Japan, identification of strategic allies in the Amazon territory for the implementation process of the AMAS-1 project.

- Challenges**

- Successfully conclude the multisectoral intervention in the department of Beni (in response to the floods) with financing from the CERF Fund, under inter-institutional coordination alongside UNICEF, FAO, OCR, and the Deputy Ministry of Civil Defense (VIDECI), reaching families in hard-to-access areas (riverside communities of the Municipality of Loreto).
- Execute the Work Plan created with all the Unit Heads regarding the gaps identified in the Oversight.

- Donors**

With funding from the CERF, a multisectoral intervention was launched in response to the floods in the department of Beni.