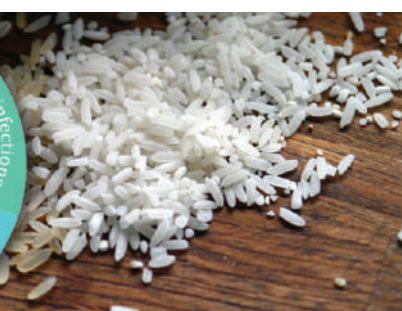




World Food Programme

SAVING
LIVES
CHANGING
LIVES



2025

MIDYEAR UPDATE

SAY NO TO 5S ■ SCHOOL FEEDING

WFP Timor-Leste



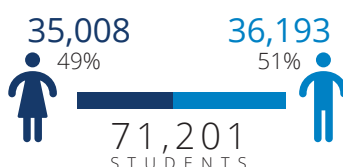
KOICA



2025 MIDYEAR

SN5S PROJECT FACTS

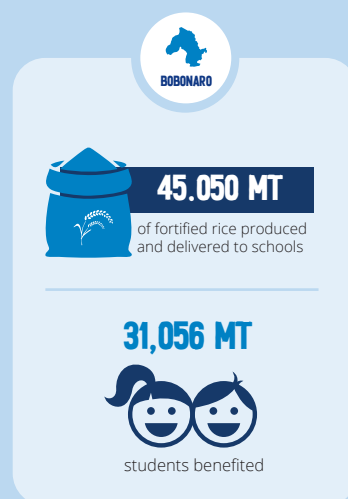
393
S C H O O L S



RICE FORTIFICATION

· Fortified Rice Production and distribution – Between May and June 2025, WFP provided support for the production and distribution of fortified rice (RF) for the school feeding programme. Over this two-month period, a total of 45.050 metric tons of fortified rice were produced and delivered to schools across Bobonaro Municipality. This intervention benefited a total of 31,056 students for 39 feeding days.

· WFP held three advocacy meetings with representatives of the municipal authorities in Baucau, Bobonaro, and Manufahi to discuss the adoption of fortified rice for school meals. Additionally, WFP engaged in discussions with a local miller to negotiate the pricing of locally available rice to be fortified using WFP-supplied Fortified Rice Kernels (FRK), as well as to address transportation concerns. As a result, the local miller in Manufahi agreed to sell the fortified rice at a price of USD 20.75 per 25 kg, including delivery to the administrative post level, ensuring schools can access the rice from these designated distribution points.



SCHOOL KITCHEN CERTIFICATION

· On 30 May 2025, a national-level orientation on School Kitchen Food Safety Certification was conducted, attended by 24 participants from the MOE, MSA, MoH, CONSSANTIL, and WFP staff. The workshop aimed to equip participants with the knowledge needed to support municipal authorities in conducting kitchen inspections on the ground. Key topics included an overview of the certification programme, food hygiene and safety practices for safer school meals in Timor-Leste, how to use the certification checklist and scoring system, and guidelines for follow-up actions and monitoring.

· Following the national-level workshop, municipal orientation sessions were held in Baucau on 17 June with 14 participants, and in Manufahi on 26 June, also with 14 participants. WFP FSU cascaded the knowledge with municipal authorities to prepare them for upcoming inspections of schools where WFP has supported the construction of kitchens in each municipality. An additional orientation session in Manufahi will take place after the kitchen construction is completed, expected by October 2025.

· WFP will conduct joint school kitchen inspections in both Baucau and Bobonaro Municipalities between July and August, alongside national and municipal authorities, following government-approved criteria. Only school kitchens that meet these standards will be eligible to receive certification.



KITCHEN EQUIPMENT

CLEANLINESS & FUNCTIONALITY



R UPDATE

SAY NO TO 5S SCHOOL FEEDING



SCHOOL KITCHEN CONSTRUCTION AND KITCHEN UTENSILS

- The seven school kitchens in Baucau and Bobonaro supported by WFP have been well received by the school entities community and municipality authorities. In a remarkable demonstration of national ownership and commitment, the Government adopted WFP's kitchen design and invested its own funds to construct a kitchen at EBC Binagari School in the Vemassee administrative post in Baucau. The decision not only highlights the high quality and effectiveness of the kitchen design but also demonstrates the government's commitment and confidence in these models, investing its own funds to replicate them.
- On 14 March 2025, the inauguration ceremony of a school kitchen took place in EBC Atabae in Bobonaro Municipality, attended by representatives from KOICA, MOE, MOH, PAM, and other key stakeholders. The event highlighted the government's dedication to enhancing school feeding infrastructure and fostering a sustainable, well-equipped environment that supports students' nutrition and overall well-being.
- To enhance effectiveness and user-friendliness, and to incorporate donor feedback on the current kitchen design, discussions have been held with the Ministry of Education's Infrastructure Department to explore revisions of the kitchen design. This process follows the onboarding of a new WFP engineer in June 2025. Construction of three new school kitchens is expected to be started in July and completed by October 2025.
- A total of 73 schools that did not receive utensils previously, across 3 municipalities, will receive kitchen utensils and equipment in August.

SOCIAL BEHAVIOURAL CHANGE COMMUNICATION (SBCC)

• Based on the findings from formative research, WFP is developing a school-based nutrition SBCC strategy with support from WFP's Asia-Pacific Regional Office (APARO). The strategy will define target audiences and desired behaviour changes using a socio-ecological model, along with a concrete implementation plan guided by the Theory of Change and measurable indicators to track progress towards achieving its objectives.



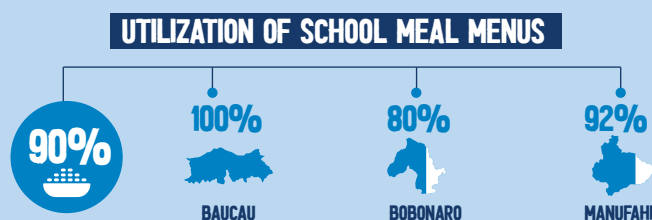


TECHNICAL ASSISTANCE FOR THE NATIONAL SCHOOL FEEDING PROGRAMME

In April 2025, the Government of Timor-Leste approved a new Government Decree to strengthen the National School Feeding Programme (SFP), aiming to improve children's nutrition, learning outcome, and school attendance through a more effective framework. In response, MoE, in collaboration with the MSA, initiated a comprehensive review of the School Feeding Manual to align with the new policy.

In this context, WFP, as a key development partner, provided technical assistance throughout the review process. This included a series of technical meetings, consultations, and a national workshop to incorporate input from municipal authorities. Major milestones in April featured a thorough analysis of the manual, presentations to multiple stakeholders, and validation of the revised guidelines. The final draft was submitted to the Minister of Education on April 29, with plans for dissemination at the municipal level to follow.

MONITORING AND EVALUATION



A total of 48 school visits were conducted in the early half of this year, guided by a monthly monitoring plan. Monitoring activities were coordinated closely with municipal school feeding monitoring teams, which include representatives from the MOE, MOH, and MALEF. These visits assess the number of feeding days, food types served, timing of meals, and the management of food inventory to ensure that supplies are appropriately stored and used. In addition, 2025 Q1 SN5S Quarterly monitoring report/snapshot produced. The quarterly report highlighted SF practices, SF monitoring process, food sourcing, school kitchens including food preparation and feedback on SFP.

In addition, on 18 February, WFP facilitated a validation workshop with participants from the MOE, CONSANTIL, the MOH, the MALFF, and other key stakeholders to review indicators prior to their integration into the M&E system. This effort is part of WFP's long-term support to strengthen programme sustainability and enhance monitoring of the National School Feeding Programme. The process has helped align programme delivery with strategic objectives and establish a clearer framework for measuring impact. WFP is in the process of procuring M&E software that will be installed on school tablets to enable monthly data collection. The M&E system is expected to connect with the government's EMIS, supporting national ownership and institutional sustainability.



WFP Timor-Leste
+670 331 0503 Ext. 2410
dili.partnerships@wfp.org
Dili, Timor-Leste