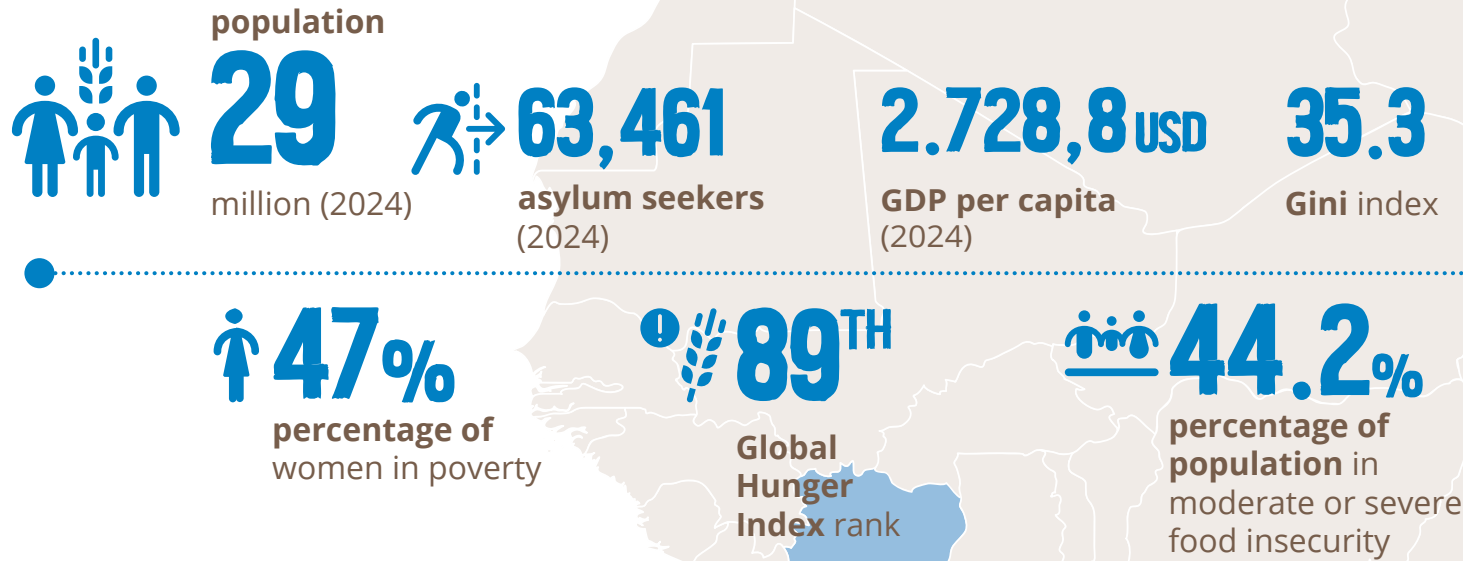
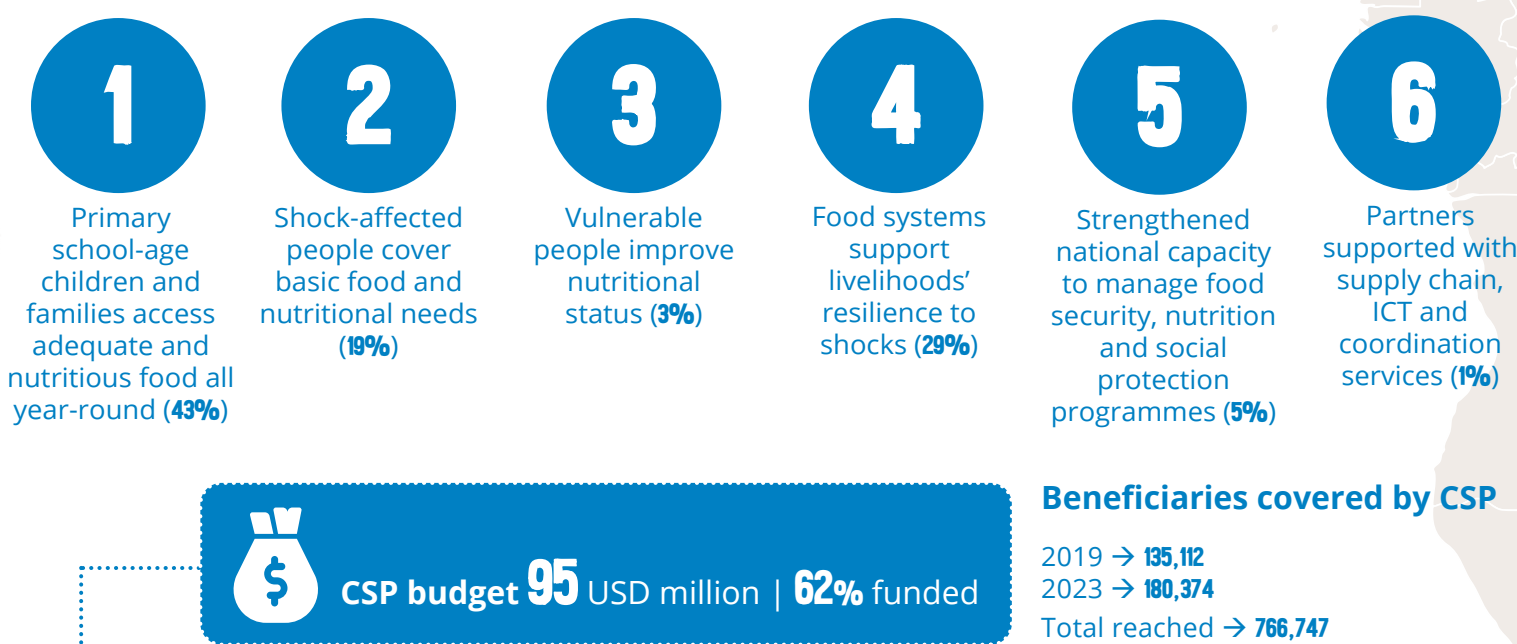




COUNTRY CONTEXT



COUNTRY STRATEGIC PLAN (CSP) focused on six strategic outcomes



January 2019 • EVALUATION • June 2024

KEY FINDINGS & CONCLUSIONS

STRATEGIC POSITIONING AND ALIGNMENT



A strong evidence base underpinned the CSP relevance



Funding availability shaped WFP's strategic focus—school feeding became central, other activities underfunded



WFP a strong partner to national institutions in school feeding, crisis response, rice fortification, and food security monitoring



CSP aligned to national strategies and adaptable to needs with contingency crisis response component



Flaws in intervention logic and integration hindered Country Capacity Strengthening efforts

KEY CONTRIBUTIONS TO CHANGE



School feeding increased enrolment and retention among girls



Emergency food assistance for refugees and vulnerable communities improved food consumption



WFP supported initial steps towards establishing national rice fortification capacities



Resilience activities improved women's access to resources

CHALLENGES



Underfunding hindered scale, continuity, and coherence of emergency response, nutrition, resilience, and capacity-strengthening results



COVID-19 disruptions likely explaining limited outcomes of school feeding on students' reading skills and household food security



Market challenges such as seasonal market saturation, low farmgate prices, and limited value chain partnerships constrained resilience-building efforts

RECOMMENDATIONS

1

Refocus WFP interventions on the most food-insecure areas and reinforce operational synergies across programme components

2

Improve national capacity strengthening through targeted and participatory strategies

3

Build multi-sectoral partnerships to address systemic challenges

4

Redefine WFP's value addition and strategy for impact in resilience, and capacity strengthening

5

Strengthen resource mobilization and set realistic, multi-year funding targets

6

Improve monitoring and evaluation systems, especially for capacity strengthening

KNOW MORE

Brief

Summary Report

Full Report