

Monthly Market Price Bulletin

Syria | August 2025 — ISSUE 128

WFP VAM | Food Security Analysis



World Food Programme

SAVING LIVES
CHANGING LIVES



HIGHLIGHTS

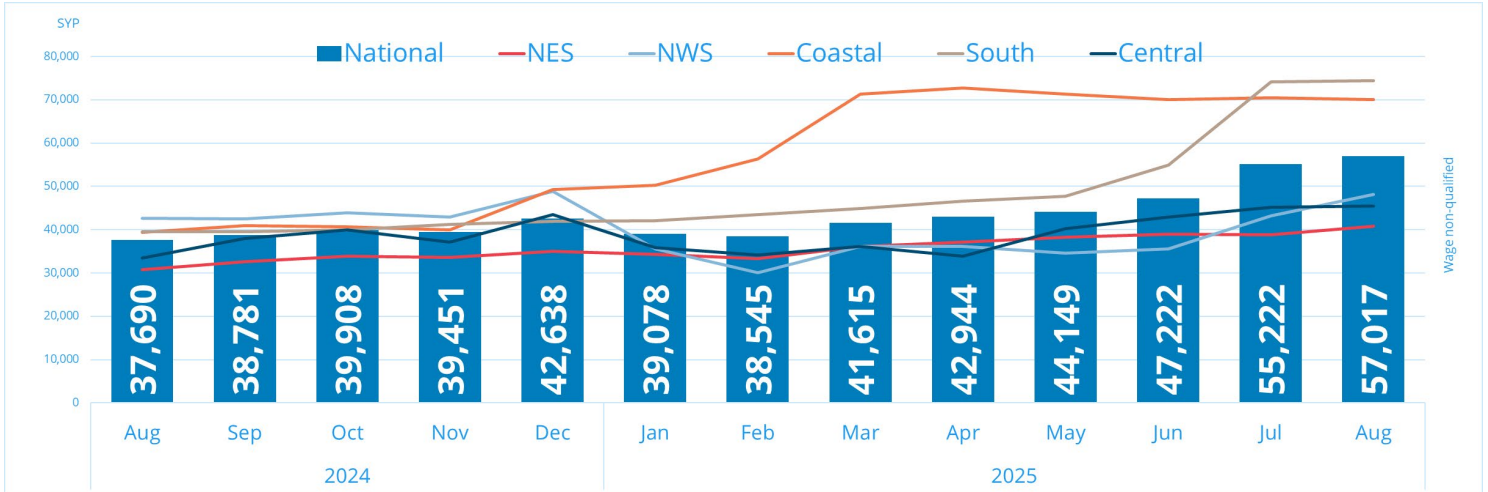
Hussam ALSALEH / WFP

- As part of its economic and fiscal reforms, Syria introduced measures to support the industrial sector, such as fuel and electricity subsidies, trade facilitation, and increased the ATM withdrawal limits, while the Central Bank is considering issuing a new national currency and removing two zeros from the current one to restore monetary stability, combat inflation, and signal a new economic phase.
- In terms of energy and trade developments, Azerbaijan has begun supplying 1.2 billion cubic meters of gas annually via Turkey, with further electricity imports from Turkey and Egypt planned between 2026 and 2029. At the same time, Syria is upgrading its trade infrastructure through the Latakia Port modernization project with France, while imposing bans on selected agricultural and food imports from Turkey to safeguard local producers.
- Public mills increased output following rehabilitation works, with plans to import 200,000 metric tons of wheat to stabilize supply. Infrastructure upgrades across logistics and transport sectors aim to enhance domestic production resilience and ensure consistent distribution.
- The cost of living in August 2025, as measured by the Minimum Expenditure Basket (MEB), increased by six percent to SYP 2 million, up from SYP 1.9 million in July 2025. An increase in the prices of tubers, vegetables, eggs, and vegetable oil drove this rise.
- The parallel market exchange rate depreciated from SYP 10,114 per USD in July 2025 to SYP 10,718 per USD. Meanwhile, the official exchange rate remained stable at SYP 11,055 per USD.

- The Syrian Ministry of Economy approved the export of used machinery under specific rules, requiring proof of ownership or import. Fees apply if customs exemptions were used, and the decision takes effect immediately to serve the public interest.
- The Ministry of Economy announced measures to support the industrial sector, including subsidized gas and reduced fuel and electricity costs. These steps aim to lower production expenses and boost the competitiveness of local products. Additional efforts include simplifying company registration and improving trade flow through land and seaports.
- The Commercial Bank of Syria raised the weekly ATM withdrawal limit to 600,000 SYP and the daily POS limit to 1 million SYP to ease access to pensions and reduce congestion. ATM operating hours were extended, and cash availability was increased to ensure timely payments. Retirees are encouraged to switch to ATM cards to benefit from the new limits and digital services.
- Azerbaijan has begun exporting 1.2 billion cubic meters of gas annually to Syria via Turkey, starting with flows to northern Aleppo and aiming for 3.4 million m³/day, while Turkey and Egypt plan to export 900 MW and 2,000 MW of electricity by 2026 and 2029, respectively—boosting Syria's power grid and regional energy integration.
- The Syrian Ministry of Economy has banned the import of frozen chicken from Turkey starting August 15, 2025, and temporarily suspended a wide range of agricultural and food imports to protect local production and food safety. The move responds to farmers' concerns over market disruption and aims to stabilize domestic supply. Despite the bans, economic cooperation with Turkey continues through trade agreements and joint participation in regional events.
- Syria and the French group CMA CGM agreed to begin phase two of Latakia Port's modernization, including a new berth and logistics upgrades. The €230 million investment also covers dry ports and air cargo improvements to boost Syria's trade infrastructure.
- The Euphrates Mill in Deir ez-Zor has increased its output to 130 tons per day following the rehabilitation of its second production line, contributing significantly toward meeting the province's daily flour demand of 220 tons. Nationwide, public mills now produce approximately 3,050 tons of flour daily, although wheat grinding has been reduced due to anti-corruption efforts and improved resource management. The Grain Corporation continues to upgrade mills across Syria to enhance operational efficiency and flour quality. In addition, Syria is planning to import 200,000 metric tons of wheat to support domestic production and ensure food security.
- Syria's Central Bank is studying the issuance of a new national currency and the removal of two zeros from the current one as part of a broader financial reform plan. The move aims to restore monetary stability, combat inflation, and symbolize a new economic phase. The plan also includes banking sector reform and the licensing of new banks, with technical and legal preparations underway.

- The national daily wage for unskilled labor increased by three percent in August 2025 compared to the previous month, reaching an average of approximately SYP 57,000 per day.
- The South region continued to report the highest average wages at SYP 74,494 for the second consecutive month, while the lowest average was recorded in the Northeast region at SYP 40,755.

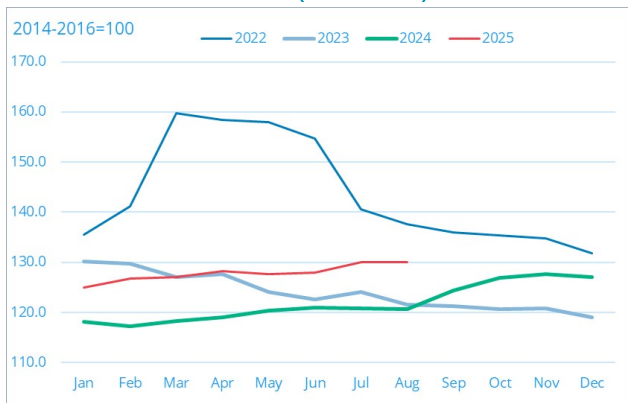
Chart 1. Daily wage (Unskilled labour) (August 2024-2025)



Global food prices and inflation trends

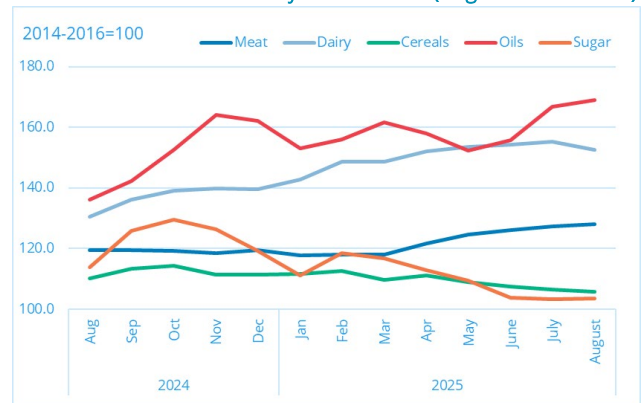
- In August 2025, the FAO Food Price Index (FFPI) averaged 130.1 points, showing no change from July 2025. Price indices for meat, sugar, and vegetable oil increased, while those for cereals and dairy products decreased. The index was 8.4 points (6.9 percent) higher than its value during the same period last year.
- The FAO Cereal Price Index averaged 105.6 points in August, down 0.8 points (0.8 percent) from July and 4.5 points (4.1 percent) below August 2024. Wheat and sorghum prices declined due to ample global supplies and weak import demand, especially from Asia and North Africa, while maize and barley prices rose, supported by weather-related yield concerns in the EU and strong demand for feed and ethanol in the US. Meanwhile, the FAO All Rice Price Index dropped by 2.0 percent, driven by lower Indica prices amid intense competition among exporters.

Chart 4: FAO Food Price Index (2022 –2025)



Source: FAO

Chart 5: FAO Food Commodity Price Indices (August 2024 –2025)

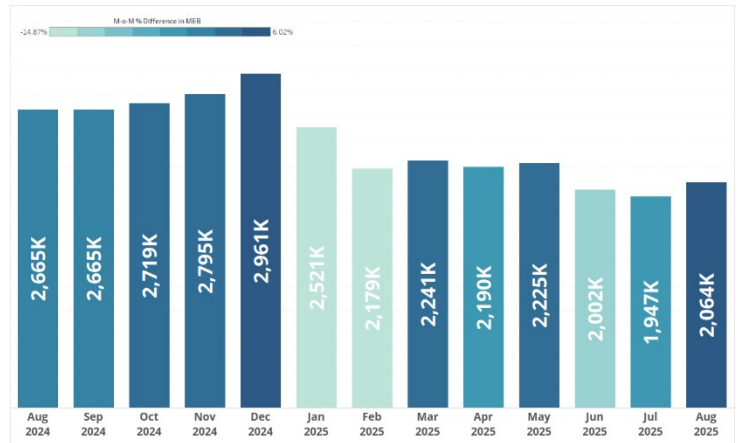


Source: FAO

¹ <https://www.fao.org/worldfoodsituation/foodpricesindex/en>

- In August 2025, the national average Minimum Expenditure Basket (MEB)—a key indicator of Syria’s cost of living—increased by six percent, averaging SYP 2,064,817 for a family of five. Although the MEB is 23 percent lower than in August 2024, this month’s increase is driven by higher prices for vegetable oil, potatoes, eggs, parsley, onions, cand arrots due to decreased or limited production against local market demand, and the rising parallel exchange rate.
- Meanwhile, the monthly minimum wage is SYP 750,000, covering only 36 percent of the total Minimum Expenditure Basket (MEB) and 57 percent of its food component, which is valued at SYP 1,320,826. Despite the increase compared to last months, the gap remains significant, around 43% for the food MEB and 64% for the total MEB.
- As-Sweida reported the highest MEB value across Syria, averaging SYP 2,935,799, driven by higher prices for all commodities except bakery bread and tomatoes, due to recent conflicts and disrupted supply chains. Meanwhile, Deir ez-Zor recorded the lowest cost, averaging SYP 1,856,828. The sharpest month-on-month price increase was observed in As-Sweida (36.9 percent), while Deir ez-Zor had the lowest increase at 1.6 percent.
- South region reported the highest MEB values, averaged at (SYP 2,195,254) , driven by rising prices for rice, eggs, plucked chicken meat, apples, onions, white beans, yogurt, sugar, and hygiene items. In contrast, Aleppo region registered the lowest MEB (SYP 1,978,984) due to lower prices for Shop bread, Potatoes, eggs, eggplants , onions, cheese, Pulses, Hygiene items, and parallel market gas cylinders.
- Year-on-year, food MEB components showed different trends for each commodity, with bakery bread prices surging following subsidy reductions. Prices increased for apples (+9 percent), while declines were recorded for potatoes (-48 percent), lentils (-44 percent), white beans (-41 percent), chickpeas and tomatoes (-40 percent), plucked chicken meat (-38 percent), sugar (-37 percent), rice (-35 percent), eggs (-34 percent), bulgur (-32 percent), and onions (-31 percent).

Chart 2: MEB Trend in Syria , SYP (August 2024-2025)



Source: Damascus Cash Working Group

Figure 1: MEB cost and changes, SYP (governorates)

Governorate	August 2025 Cost	Last Month
As-Sweida	2,935,799 SYP	▲ 36.9%
Idleb	1,952,344 SYP	▲ 13.3%
Ar-Raqqa	2,096,032 SYP	▲ 7.5%
Homs	2,085,068 SYP	▲ 6.4%
Aleppo	1,967,399 SYP	▲ 6.3%
Al-Hasakeh	2,143,115 SYP	▲ 6.2%
Lattakia	2,118,181 SYP	▲ 5.3%
Tartous	2,072,501 SYP	▲ 5.0%
Rural Damascus	2,049,338 SYP	▲ 4.1%
Dar'a	2,224,431 SYP	▲ 3.7%
Quneitra	2,101,773 SYP	▲ 3.4%
Hama	2,056,585 SYP	▲ 2.6%
Damascus	2,093,252 SYP	▲ 2.4%
Deir-ez-Zor	1,856,828 SYP	▲ 1.6%

Source: Damascus Cash Working Group

Figure 2: MEB cost and changes, SYP (Regions)

Regions	August 2025 Cost	Last month
Aleppo	1,978,984 SYP	▲ 9.0%
NES	2,055,580 SYP	▲ 7.4%
South	2,195,254 SYP	▲ 7.0%
Coastal	2,144,409 SYP	▲ 5.0%
Central	2,073,898 SYP	▲ 4.9%

Source: Damascus Cash Working Group

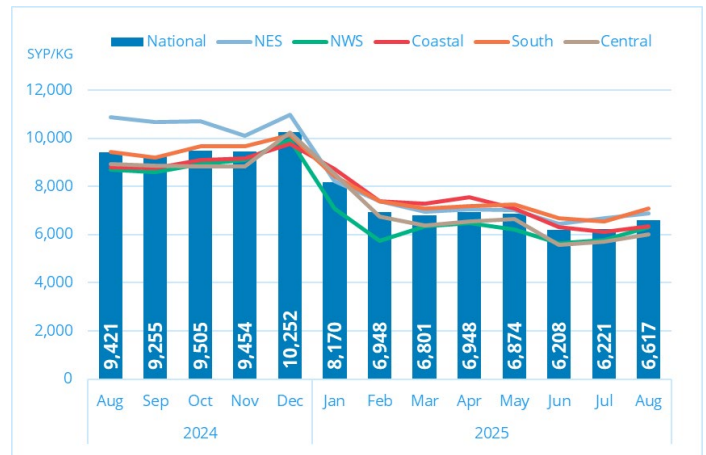
Legend on regions :

NWS = Aleppo And Idleb - South = Damascus, Rural Damascus, Dar'a, As-Sweida, and Quneitra - NES = Ar-Raqqa, Al-Hasakeh, and Deir-ez-Zor - Coastal = Lattakia and Tartous - Central = Homs and Hama

² A Minimum Expenditure Basket (MEB) is defined as what a household requires to meet essential needs, conceptually equivalent to a poverty line. It includes the cost of food, utilities, services and re-resources required monthly. For Syria, it was developed through an interagency collaborative process under the Humanitarian Country Team Cash Working Group (HCT-CWG).

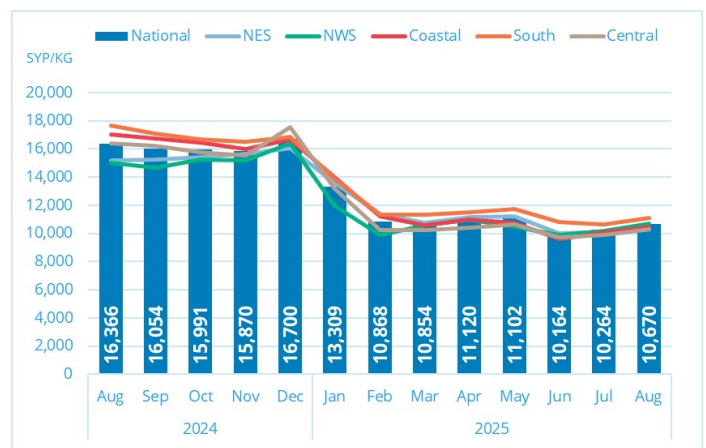
- Wheat Flour:** In August, wheat flour prices increased by six percent from the previous month, averaging SYP 6,617 per kilogram.
- The southern areas recorded the highest price at SYP 7,086 per kilogram, while the Central region reported the lowest at SYP 6,003 per kilogram.
- Over the past year, wheat flour prices have declined by 30 percent. The highest decrease percentage was recorded in the Northeast region by (30 percent), while the lowest drop percentage was in the South region (25 percent)
- Rice:** In August, the average price of 1 kg of Egyptian white rice was SYP 10,670, a four percent increase from the previous month. However, prices remain 35 percent lower compared to the same period last year.
- Regionally, the southern region recorded the highest price at SYP 11,130, while the central region recorded the lowest at SYP 10,288.
- The south and central region experienced the largest annual decrease (37 percent), whereas the Northwest had the smallest decline (29 percent).
- Chicken and Eggs** In August, the national average price of plucked chicken increased by one percent compared to the previous month, averaging SYP 26,849 per kilogram. This represents a 38 percent decrease year-on-year.
- South region recorded the highest price averaging at SYP 31,007 per kilogram, while the Northeast region recorded the lowest at SYP 24,557. Northeast region experienced the largest annual decrease (47 percent), whereas the South region had the smallest (30 percent).
- Meanwhile, the average price of a tray of 30 eggs increased by 21 percent to SYP 31,990. Over the past year, egg prices decreased by 34 percent.
- The increase in egg prices in Syria is driven by multiple factors, including heat waves that have disrupted production and raised operational costs. Additionally, wholesalers have added higher profit margins, and the export of eggs has further reduced domestic supply, contributing to the overall price surge

Chart 3: Retail Prices of Wheat flour, SYP (August 2024-2025)



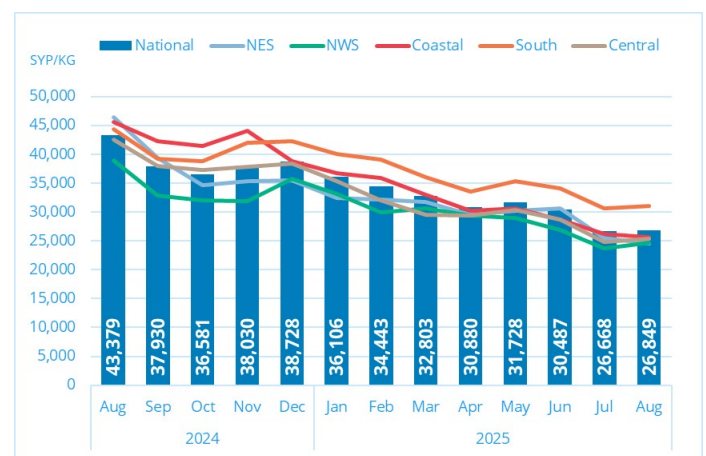
Source: WFP

Chart 4: Retail Prices of rice, SYP (August 2024-2025)



Source: WFP

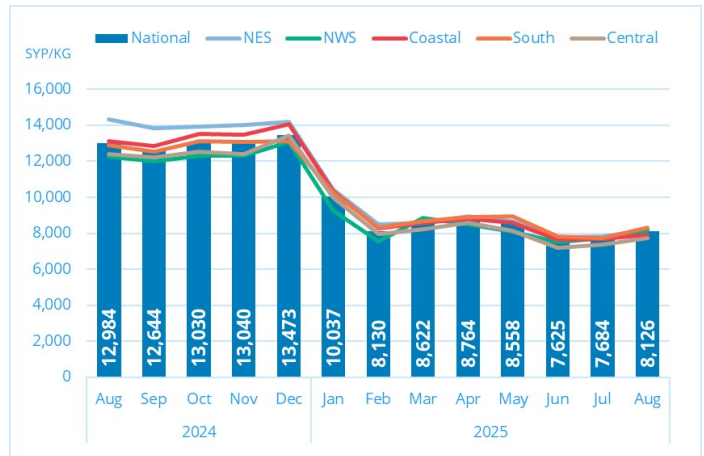
Chart 5: Retail Prices of Chicken, SYP (August 2024-2025)



Source: WFP

- Sugar** August prices increased by six percent compared to the previous month, averaging SYP 8,126 per kilogram. The prices were 37 percent lower year-on-year.
- Regionally, the south region recorded the highest retail price at SYP 8,320, while the Central region had the lowest price at SYP 7,709.
- The northeast region had the largest annual decrease at (43 percent) since August 2024, while the northwest region recorded the lowest decrease at (34 percent).

Chart 6: Retail Prices of sugar, SYP (August 2024-2025)

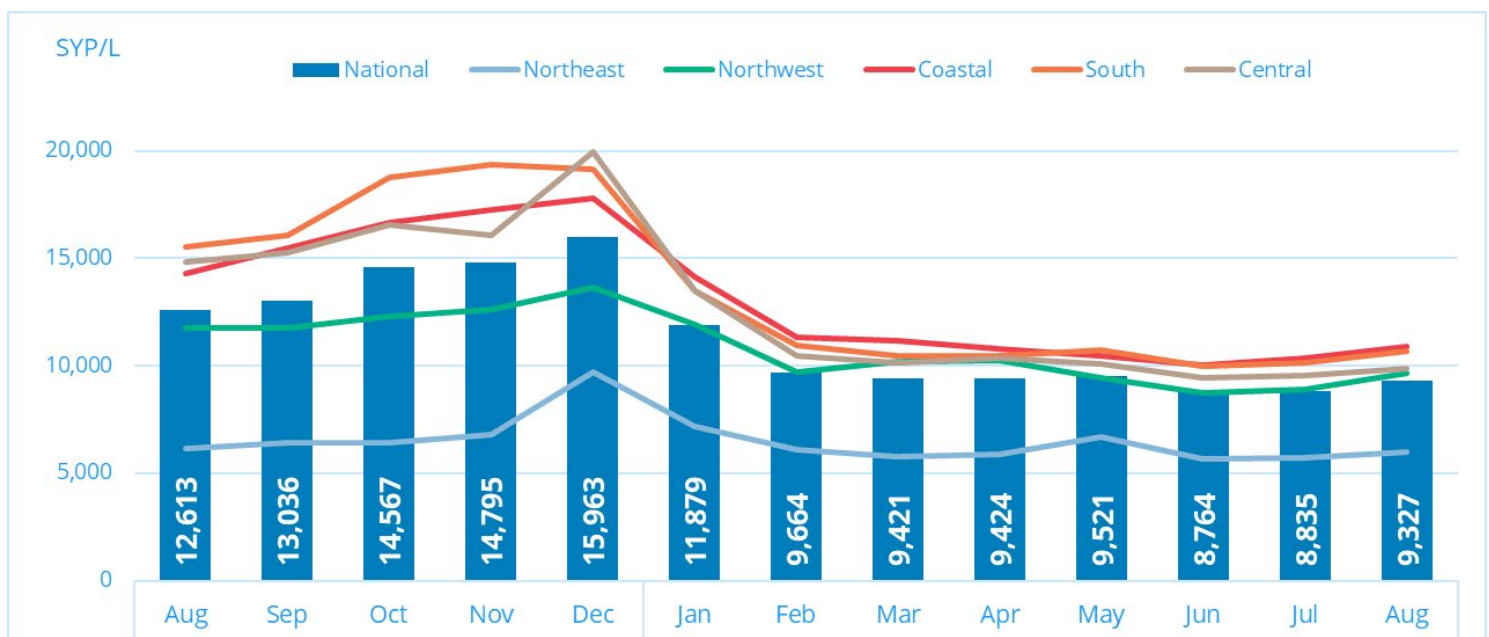


Source: WFP

Energy prices

- The national parallel market price for transport diesel increased by six percent compared to the previous month, averaging SYP 9,327 however, this represent a 26 percent decrease compared to August 2024.
- The northeast region recorded an annual decrease in diesel prices (three percent), while the central, and south regions saw a price drop by (34 percent).
- The average price of a 25-litre cylinder of butane gas on the parallel market had no change from the previous month at SYP 149,264.
- Year-on-Year, gas prices declined by 42 percent at the national level, with the sharpest declines observed in the South region (53 percent), while the Northeast decreased by (25 percent).

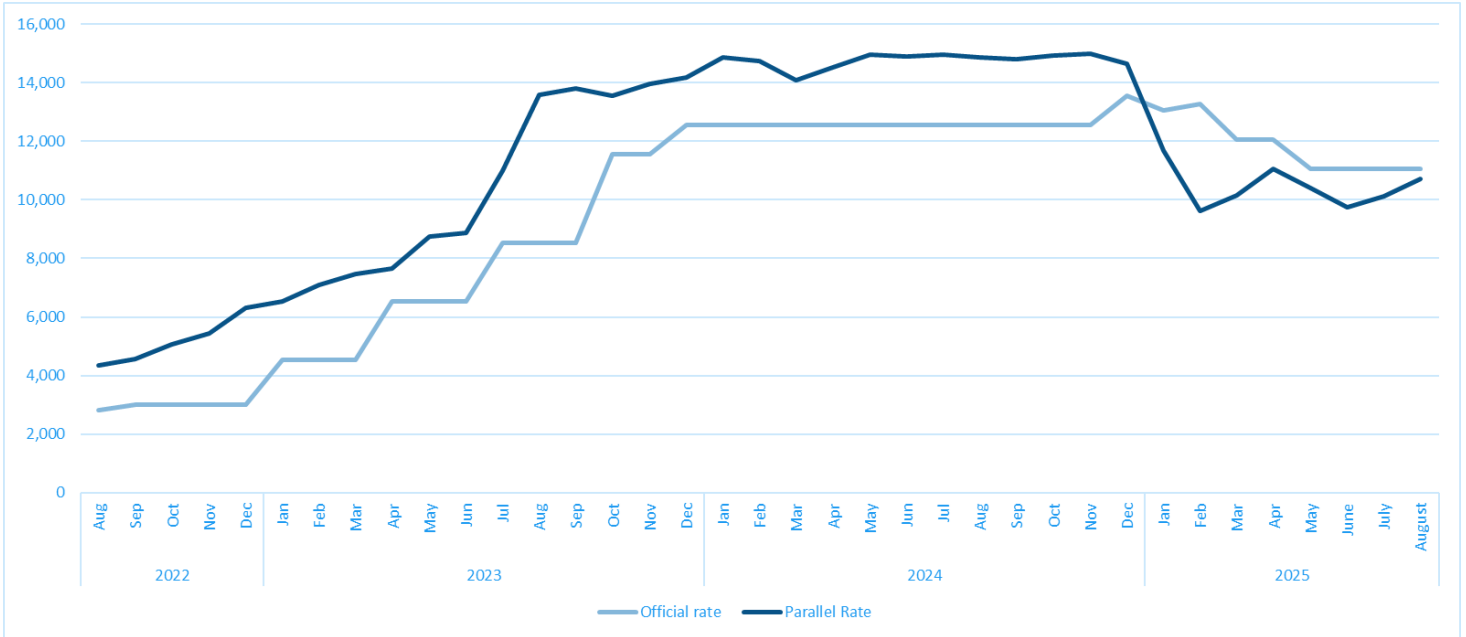
Chart 7: Monthly Prices of Transport Diesel , SYP/L (August 2024-2025)



Source: WFP

- The official exchange rate of the SYP remained unchanged at 11,055 per USD.
- The parallel market exchange rate depreciated in August 2025, averaging SYP 10,718 per USD, compared to SYP 10,114 per USD the previous month. Although it remains lower than the official rate, this reflects a 39 percent appreciation over the past year and 27 percent over a two-year period. However, in three years period SYP has depreciated by 59 percent. The M-o-M increases mainly driven by the salary increment, the increase of ATM and POS withdrawal limits and the announcement of issuing a new national currency which increased the liquidity in the market.

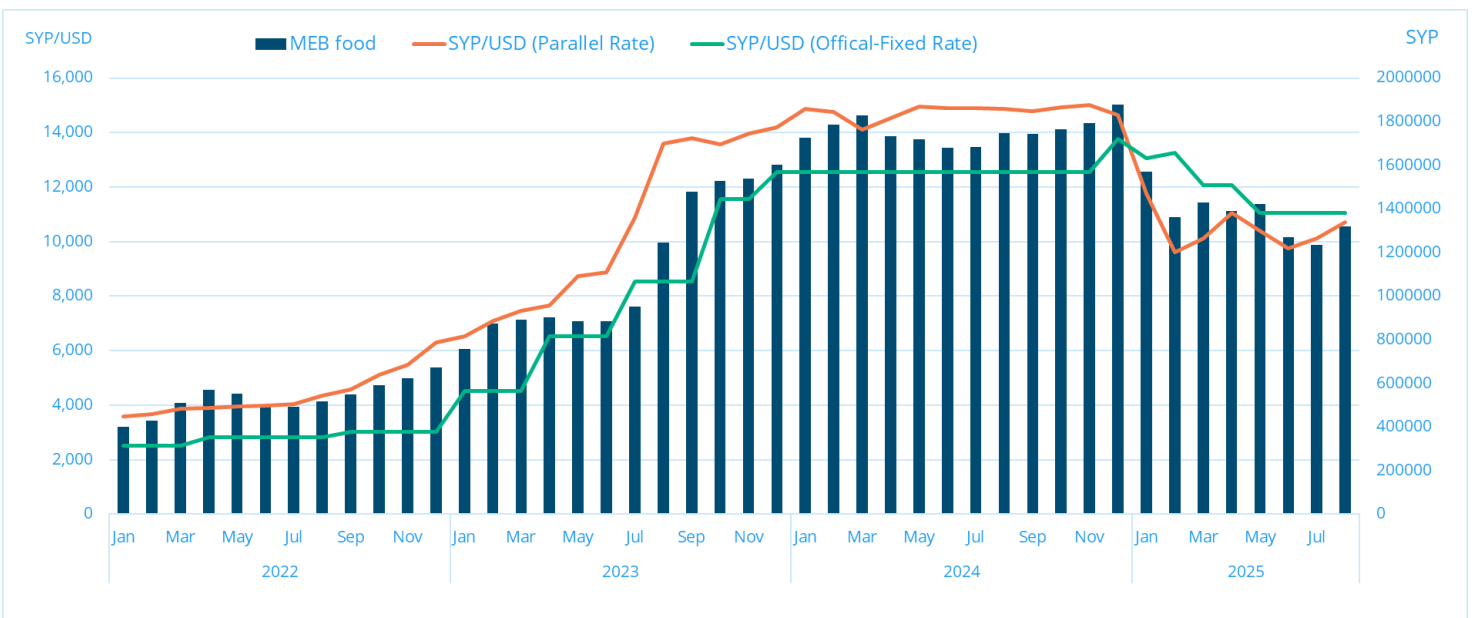
Chart 8: Monthly Exchange Rate Trends in 3-year Calendar , SYP/USD (August 2022-2025)



Source: WFP, CBS

- Syria remains heavily dependent on food imports, making it highly susceptible to cost increases driven by currency fluctuations. Chart 9 illustrates the correlation between exchange rate movements and food prices within the MEB, underscoring how the recent appreciation of the SYP has contributed to the decline in the food MEB value over the past few months. However, in August, there is a 6% depreciation in the currency is correlated with 6% increase in the MEB value.

Chart 9: Correlation between food MEB and exchange rate

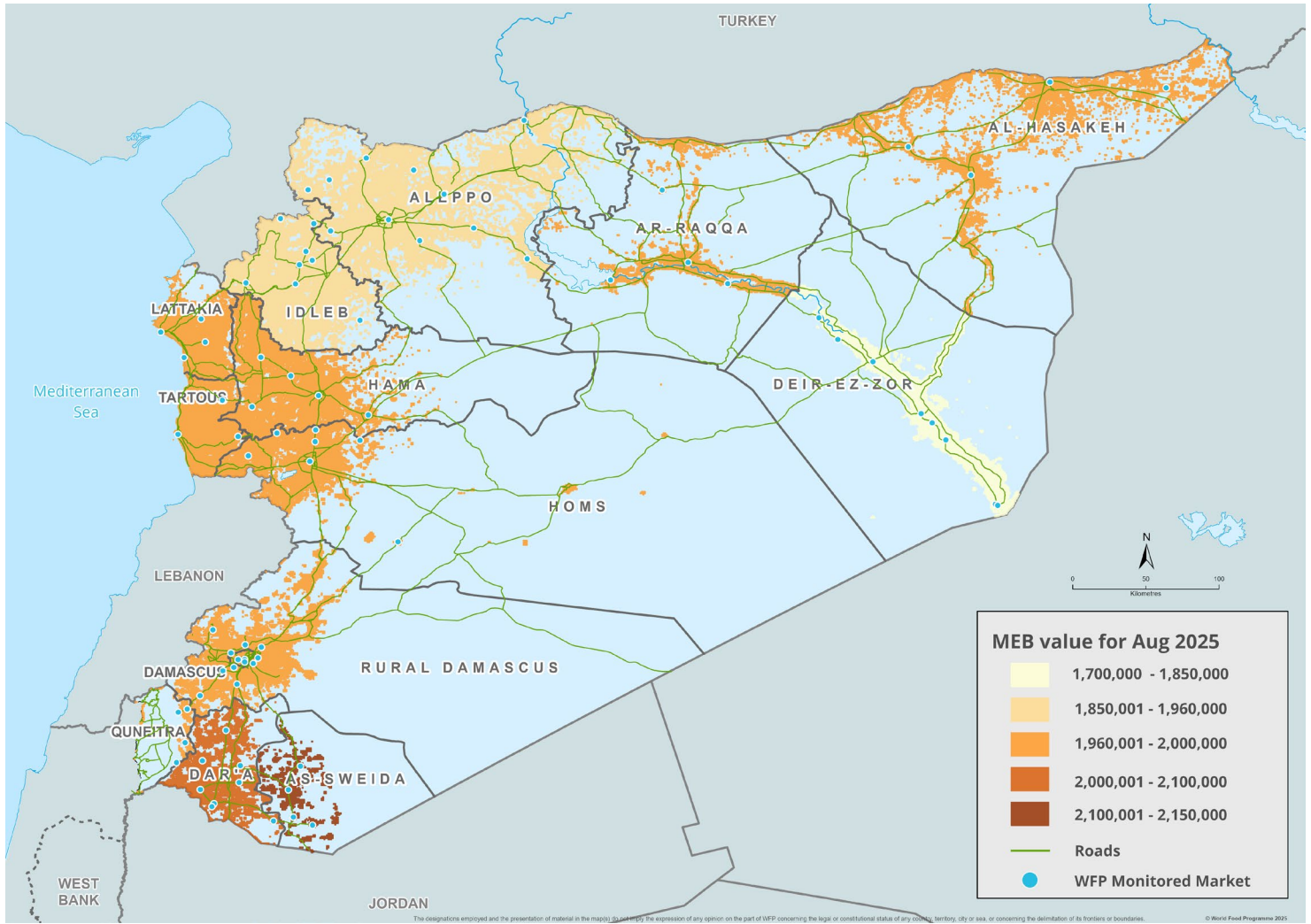


Annex 1: Retail prices for MEB food components

items	Monitoring Unit	August 2025 National	2 years	1 Year	1 month	2 years change	1 year change	1 month change			
Apples	1 KG	SYP 10,553	SYP 6,035	SYP 10,683	SYP 11,652	▲	75%	▲	9%	▼	-9%
Beans (white)	1 KG	SYP 20,585	SYP 23,027	SYP 34,988	SYP 19,659	▼	-11%	▼	-41%	▲	5%
Bread (bakery)	1.1KG	SYP 3,978	SYP 311	SYP 670	SYP 3,936	▲	1179%	▲	494%	▲	1%
Bread (shop)	1.1 KG	SYP 8,820	SYP 7,340	SYP 10,743	SYP 8,523	▲	20%	▼	-18%	▲	3%
Bulgur	1 KG	SYP 8,610	SYP 9,881	SYP 12,650	SYP 8,224	▼	-13%	▼	-32%	▲	5%
Carrots	1 KG	SYP 8,873	SYP 7,853	SYP 9,452	SYP 8,082	▲	13%	▼	-6%	▲	10%
Cheese	1 KG	SYP 34,418	SYP 29,506	SYP 39,624	SYP 32,492	▲	17%	▼	-13%	▲	6%
Chickpeas	1 KG	SYP 15,422	SYP 13,776	SYP 25,676	SYP 14,973	▲	12%	▼	-40%	▲	3%
Eggplants	1 KG	SYP 3,387	SYP 2,953	SYP 3,634	SYP 3,339	▲	15%	▼	-7%	▲	1%
Eggs	30 eggs	SYP 31,990	SYP 36,094	SYP 48,476	SYP 26,347	▼	-11%	▼	-34%	▲	21%
Lentils	1 KG	SYP 11,139	SYP 15,208	SYP 19,723	SYP 10,660	▼	-27%	▼	-44%	▲	4%
Meat (chicken, plucked)	1 KG	SYP 26,849	SYP 27,404	SYP 43,379	SYP 26,668	▼	-2%	▼	-38%	▲	1%
Oil	1 Liter	SYP 18,789	SYP 23,474	SYP 23,191	SYP 17,214	▼	-20%	▼	-19%	▲	9%
Onions	1 KG	SYP 3,596	SYP 3,691	SYP 5,242	SYP 3,256	▼	-3%	▼	-31%	▲	10%
Parsley	Packet	SYP 1,501	SYP 871	SYP 1,897	SYP 1,276	▲	72%	▼	-21%	▲	18%
Potatoes	1 KG	SYP 4,606	SYP 3,754	SYP 8,934	SYP 3,763	▲	23%	▼	-48%	▲	22%
Rice	1 KG	SYP 10,670	SYP 15,589	SYP 16,366	SYP 10,264	▼	-32%	▼	-35%	▲	4%
Salt (iodised)	1 KG	SYP 3,700	SYP 2,675	SYP 4,404	SYP 3,626	▲	38%	▼	-16%	▲	2%
Sugar	1 KG	SYP 8,126	SYP 14,281	SYP 12,984	SYP 7,684	▼	-43%	▼	-37%	▲	6%
Tomatoes	1 KG	SYP 3,885	SYP 3,127	SYP 6,443	SYP 3,245	▲	24%	▼	-40%	▲	20%
Yogurt	1 KG	SYP 7,831	SYP 5,911	SYP 8,809	SYP 7,527	▲	32%	▼	-11%	▲	4%

Annex 2: Retail prices for MEB non-food components

items	Monitoring Unit	August 2025 National	2 years	1 Year	1 month	2 years change	1 year change	1 month change			
dishwashing liquid	900 ml	SYP 11,462	SYP 11,181	SYP 14,399	SYP 11,027	▲	3%	▼	-20%	▲	4%
Fuel (gas)	25 KG	SYP 128,732	SYP 16,842	SYP 35,634	SYP 126,598	▲	664%	▲	261%	▲	2%
Fuel (gas, parallel market)	25 KG	SYP 149,264	SYP 118,158	SYP 259,045	SYP 149,617	▲	26%	▼	-42%	▼	0%
internet bundle	1 GB	SYP 26,013	SYP 14,125	SYP 29,616	SYP 25,249	▲	84%	▼	-12%	▲	3%
Multipurpose soap	1 piece	SYP 2,982	SYP 2,499	SYP 3,253	SYP 2,842	▲	19%	▼	-8%	▲	5%
sanitary pads	10 pcs	SYP 8,528	SYP 9,953	SYP 11,470	SYP 8,357	▼	-14%	▼	-26%	▲	2%
toothpaste	100 ml	SYP 14,564	SYP 13,838	SYP 18,412	SYP 14,364	▲	5%	▼	-21%	▲	1%



Methodology:

Market price data is collected weekly between Monday and Wednesday across 85 sub-district-level markets. For each commodity, prices are sourced from three different traders to reflect market variations, focusing on locally produced, lowest-cost, and commonly consumed items. Standard measurement units (e.g., kilograms, liters) are used consistently, and the same brand and quality are maintained across rounds whenever possible; any substitutions are recorded. Prices from WFP-contracted shops or distributed food assistance are excluded to prevent distortion. The collected data is shared with WFP focal points for cleaning, during which outliers are reviewed and removed. Final figures are calculated as average prices per commodity and location. Significant price fluctuations are documented to provide market context. This approach ensures consistent, reliable, and comparable market price data over time.

For further information please contact:

- Mohamed SALEM, mohamed.salem@wfp.org
- Obada ALADIB, obada.aladib@wfp.org
- Mohamad Jaber ALTABBA, Mohamadjaber.altabba@wfp.org

Acknowledgements

Lilka MASSOUH - GIS and Graphics

All data and monthly reports can be found in [DataViz](#) website