



World Food
Programme

SAVING
LIVES
CHANGING
LIVES

Estimating the number of people in acute food insecurity in the countries with WFP operational presence

WFP estimates that in 2025, 318 million people will be acutely food insecure across 68 countries with WFP operational presence and where data is available.

The following document, produced by the Analysis, Planning and Performance Division, explains the methodology for the number of people in acute food insecurity in countries with WFP operational presence in detail.

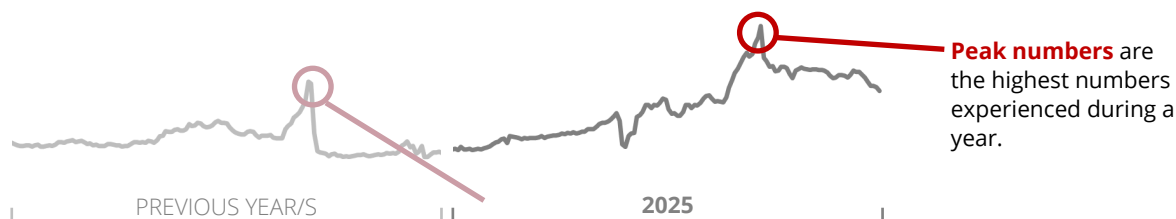
WHY DOES WFP PUBLISH THIS NUMBER ON ACUTE FOOD INSECURITY, AND HOW DOES IT DIFFER FROM THE GLOBAL REPORT ON FOOD CRISES (GRFC)?

- WFP needs numbers of people in acute food insecurity that are as complete, recent and reliable as possible, in order to plan its operations, advocate for countries in crises and ensure global coverage of needs.
- While there are joint efforts to produce global figures, these do not meet WFP's need for complete country coverage. To arrive at a complete overview of the number of people in acute food insecurity, WFP uses the Integrated Food Security Phase Classification (IPC)/ Cadre Harmonisé (CH) and equivalent information where available, as per the GRFC, and fills data gaps with other recognised assessments of acute food insecurity.
- Due to differences in the methodology and country coverage, WFP's estimates are not the same as the number of people in Crisis or worse (IPC/CH 3+ or equivalent) as published by the GRFC. For a comparison of these figures, please see [here](#).
- The number of people in acute food insecurity in countries with WFP operational presence and where data is available is updated twice per year, and it is published in WFP's Global Outlook.

November 2025

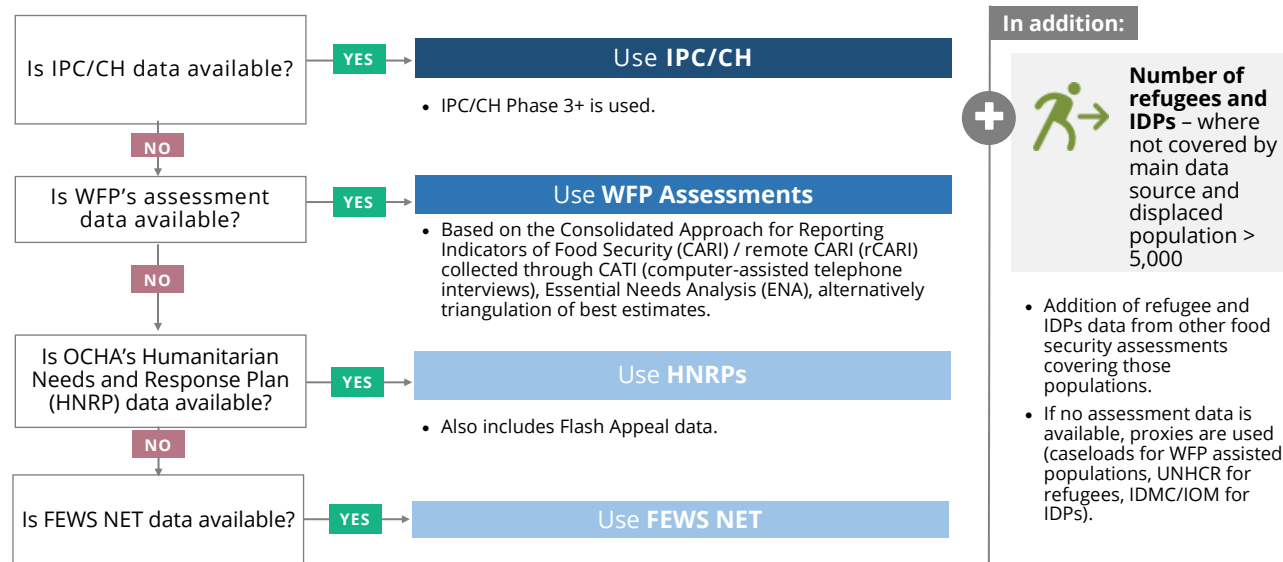
WHICH NUMBERS ARE USED?

As in the Global Report on Food Crises, the WFP number of acutely food insecure is based on the **peak methodology**. WFP uses peak numbers of the current year, where available.



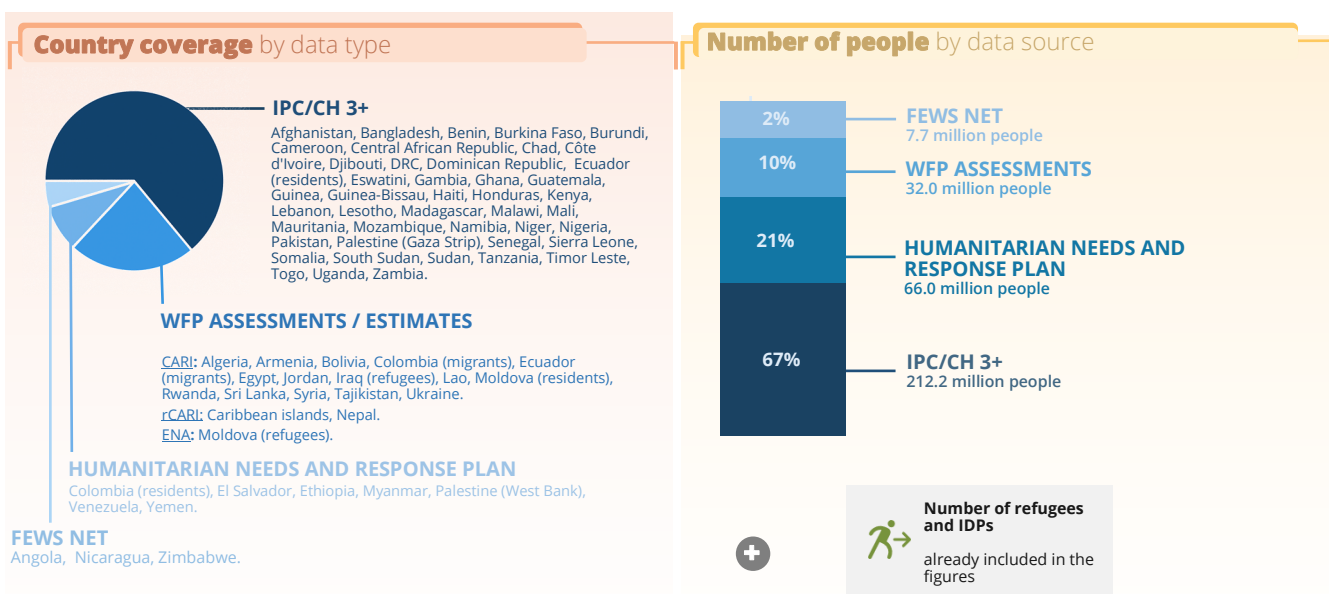
Where the peak number is not available, the **latest peak available (2024)** is used as an estimation.

HOW ARE DATA SOURCES SELECTED FOR COUNTRIES?



BREAKDOWN OF THE 2025 ESTIMATE: Across **68 countries**, **318 million people** are acutely food insecure

Included are all countries where WFP plans to implement unrestricted resource transfers (URT) under Strategic Outcome 1 (SO1) in 2025. Data older than 2024 have been excluded. Data pertaining to displaced populations only has been included for countries where operations only cover displaced populations (and potentially host communities) - Algeria, Djibouti, Egypt, Jordan, Iraq, and Rwanda. For this edition, 9 countries with URT under SO1 have data gaps or outdated data: Cuba, DPRK, Iran (refugees), Liberia, Libya, Peru, Philippines, ROC, Sao Tome and Principe.



ANALYSIS, PLANNING & PERFORMANCE

World Food Programme

Via Cesare Giulio Viola 68/70,
00148 Rome, Italy - T +39 06 65131
wfp.org

For queries, please contact: wfp.vaminfo@wfp.org