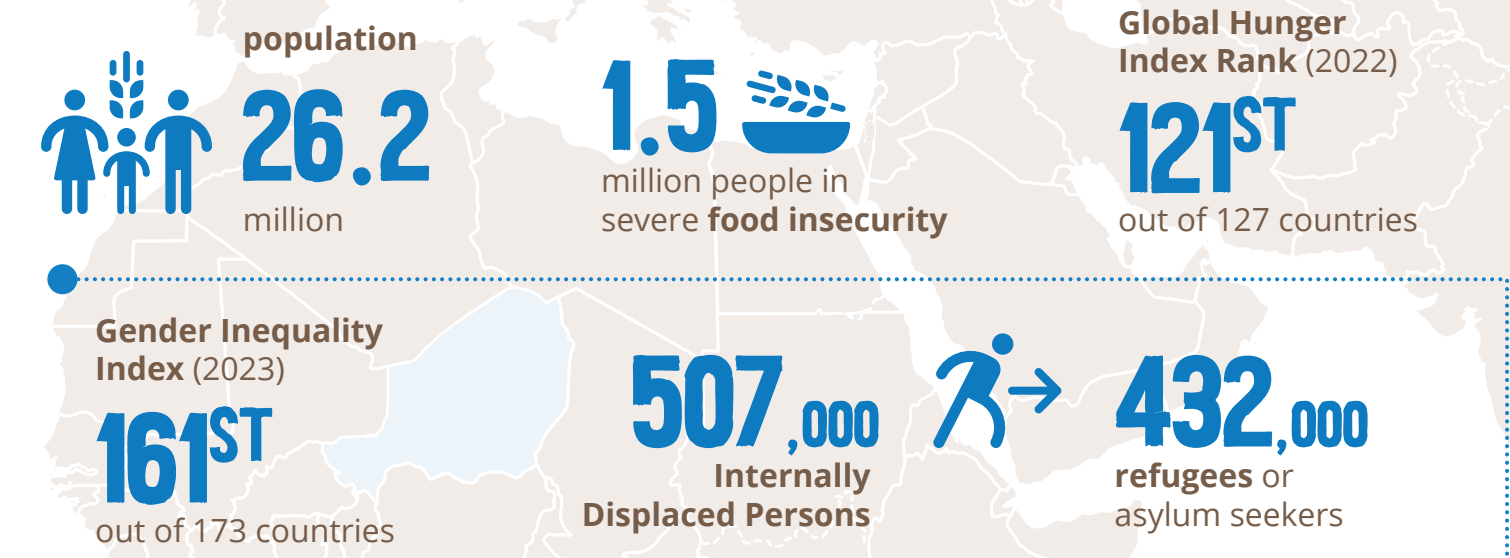


## COUNTRY CONTEXT



## COUNTRY STRATEGIC PLAN (CSP) focused on six strategic outcomes



## EVALUATION

### KEY FINDINGS & CONCLUSIONS

#### STRATEGIC ALIGNMENT AND PARTNERSHIP



CSP is broadly aligned with national priorities, UN frameworks, and the SDGs



WFP's readiness to respond was recognized as added value



Challenges remain in collaborating with cooperating partners and expanding engagement with the private sector and academia

#### CONTEXTUAL RELEVANCE AND ADAPTIVE CAPACITY



WFP is recognized for ability to deliver context-specific assistance, adapting to multiple shocks



The CSP showed strong contextual relevance, with WFP aligning activities to vulnerable populations' evolving needs



WFP's adaptive capacity were supported by robust information systems and a flexible framework allowing for strategic and operational adjustments

#### INTERNAL COHERENCE



CSP clearly structured around emergency response and an integrated resilience package, reflecting strategic intent



Emergency response and resilience support showed weak articulation of internal linkages

#### CONTRIBUTION TO STRATEGIC OUTCOMES



WFP played a critical role in providing food and nutrition assistance to shock-affected populations in Niger, particularly during the lean season and following displacement or flooding events



WFP's resilience package improved natural resource access and livelihoods through school feeding, nutrition, and asset rehabilitation



Key challenges include asset maintenance and community ownership, and overall sustainability of results

#### CROSS-CUTTING THEMES



WFP integrated gender equality, protection, and environmental sustainability across its interventions



WFP strove to adhere to the humanitarian principles and continued to be perceived as a neutral actor

#### EVIDENCE GENERATION



WFP invested in evidence generation and impact evaluation, despite funding, security, and access constraints



Critical gaps remain in trend analysis and understanding long-term results

#### FINANCIAL RESOURCES AND EFFICIENCY MEASURES



Funding shortfalls impacted humanitarian response, limited flexibility and predictability of funding hindered medium-term planning



WFP's response was not always timely or at the required scale and lacked planning ahead of recurring shocks

#### HUMAN RESOURCES



WFP expanded its national staffing and operational presence in Niger, but continues to face challenges in human resource capacity, gender parity, and staff retention

## RECOMMENDATIONS



## KNOW MORE



Brief



Summary Report



Full Report