

## WFP Tunisia Special Country Brief September - December 2025

### Operational Context

Since the 2011 Jasmine Revolution, Tunisia has faced ongoing political and socio-economic context. In the past decade, Tunisia has seen 14 different governments and continues to face social tensions and a sluggish economic recovery due to persistent structural issues and greater reliance on external revenues. Despite tremendous progress against food insecurity and malnutrition, the country continues to struggle with residual malnutrition and micronutrient deficiencies, along with overweight, obesity and social inequalities.

While Tunisia has a low Global Hunger Index, factors like persistent unemployment, climate change, rural-urban and other social inequalities, and reliance on cereal imports pose threats to the long-term food and nutrition security. According to the FAO 2022 [Food Security report](#) food insecurity now affects 28 percent of Tunisians, or 3.3 million people.

In Tunisia, WFP has been providing technical assistance and policy advice through capacity-strengthening activities to both the government and to communities. The **Country Strategic Plan (CSP)** 2022-2025's focus has been to enhance the national school feeding programme, while strengthening the resilience of smallholder farmers and government institutions capacity to improve the quality, flexibility, inclusivity, and shock responsiveness of national social safety nets. The CSP is aligned with the Government's education reform, Sustainable School Meals Strategy, and Tunisia's UN Sustainable Development Cooperation Framework (2021-2025).



Population: **12 million**

Income Level: **Lower middle**

2023 Human Development Index: **101 out of 193**

### Highlights

- In alignment with its planned exit strategy, WFP has finalized the transfer of its programmes to integrate achievements realized during the **2022-2025 CSP** into national systems, thereby supporting long-term development beyond WFP's direct engagement.
- During the reporting period, WFP launched national food security ([foodsecurity.tn](#)) and GIS school mapping **platforms**; distributed **22,873** snacks to **3,126** students; completed the transfer of **7** major programmes to national entities and UN counterparts; received **3** Anthem Awards for its innovative Social Behaviour Change Communication Television series highlighting nutrition and food waste challenges in the country.
- After 15 years of presence in Tunisia, WFP concludes its operations and will effectively close its offices on 31 December 2025. Effective, 01 January 2026, WFP Tunisia will become a Non-Resident Agency under the purview of WFP's Regional Office in Cairo.

### Operational Updates

#### **Under the CSP's Strategic Outcome 2 WFP concludes its activities with the launch of the nation's First National Food Security Platform.**

In October 2025, WFP supported the Government of Tunisia in launching the nation's first national food security platform, [foodsecurity.tn](#). Led by the Ministry of Agriculture in partnership with WFP, the National Observatory of Agriculture (ONAGRI), and the Bizerte Competitiveness Pole (PCB), this innovative platform offers reliable, data-driven insights to support evidence-based decision-making—a milestone that strengthens collaboration among national institutions and partners. The launch featured a joint event with the Ministry of Agriculture to present the platform on a national scale.



*A group photo during the launch event of the National Food Security Platform held in collaboration with the Ministry of Agriculture and key partners – Tunis – 2025 – @Oussema Hajji / IKIGAI*

## Under the CSP's Strategic Outcome 2, WFP and partners launched Tunisia's National School Feeding Geospatial (GIS) Mapping Platform

In November 2025, WFP Tunisia, with the Ministry of Education and Environmental Systems Research Institute, Inc. (Esri) North Africa, launched the national School Feeding GIS Mapping Platform. This groundbreaking digital innovation provides a unified, real-time view of Tunisia's national school feeding system, georeferencing schools, canteens, bakeries, food banks, and transport routes across the country.

The platform provides interactive dashboards and mobile applications that allow decisionmakers to monitor coverage, optimize logistics, and reach underserved areas. More than 30 ministry staff have received training in GIS workflows to support national sustainability efforts. This initiative promotes transparency, efficiency, and equity, positioning Tunisia as a regional leader in geospatial innovation for education and nutrition, while advancing resilient and inclusive school feeding systems.

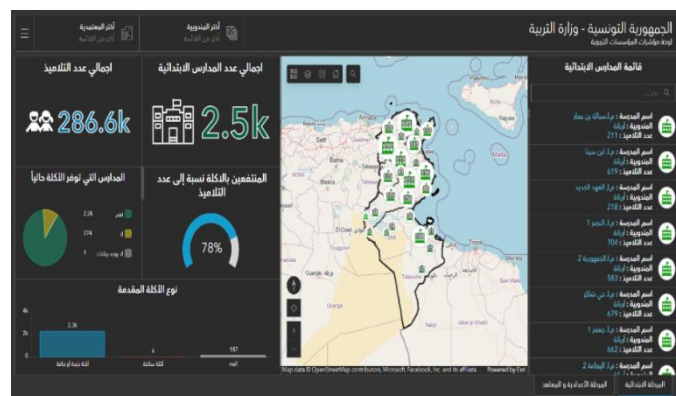
The platform was inaugurated through a collaborative event with the Ministry of Education, during which partners formally signed the project closure statement.



The Chief of Staff to the Tunisian Minister of Education, Mehrez Najib Ben Hamida, received an appreciation trophy from WFP Tunisia Country Director a.i Mohamed Sheikh for the Ministry's collaboration at the launch of the national School Feeding GIS Mapping Platform in Tunis, 2025. WFP@Aymen Said



From left, WFP Tunisia Country Director, the General Director of the School Works Office at the Ministry of Education, and Esri North Africa Technical Manager sign the project closure statement. Standing from left are OOSCO's representative and WFP ICT officer, during the official event – Tunis – 2025 – @Oussema Hajji/ IKIGAI



The Schools Dashboard is a responsive web app for tracking school feeding nationwide, offering real-time maps, district-level statistics, and smart filters accessible via web, mobile, and tablet – 2025 - WFP@ Aymen Said

## Decentralized Evaluation concludes that WFP Tunisia's Support is highly relevant to Smallholder Farmers and the National School Meals Programme (2022–2024)

In October 2025, WFP Tunisia hosted an event to present findings from its [evaluation](#) of support given to smallholder farmers and the National School Meals Programme (2022–2024). This evaluation, completed in September 2024 under the oversight of WFP's Regional Office Evaluation Unit, examined the effectiveness of WFP support, accountability for entrusted resources, opportunities for strategic improvement.

Stakeholders reviewed major findings, discussed sustainability, and ways to integrate WFP-supported programmes into national systems as WFP prepared to exit Tunisia. The evaluation noted impressive positive results on relevance to national priorities, coherence of interventions, quality and impact of the technical assistance provided to national institutions involved. However, it also pointed out that limited investments in support of small holder farmers and delays in land acquisition by agricultural groups hindered implementation.

Overall, similar operations in other regions could benefit from increased focus on vulnerability, value chains, and more local-level participatory design. The full evaluation report is available at [WFP.org](https://wfp.org).



WFP staff and partners gathered during the event to share results from the evaluation of support for smallholder farmers and the National School Meals Programme, highlighting key findings, sustainability, and pathways for national integration – Tunis, 2025 – @Oussema Hajji/ IKIGAI



## As part of **Strategic Outcome 2**: WFP's "Salla Salla" TV series promoted nutrition habits among Tunisian schoolchildren and families, reaching 2 million viewers

The Social and Behavioural Change Communication (SBCC) television series [Salla Salla](#) achieved international recognition by earning one Gold and two Silver Anthem Awards in the United States for its creative and strategy. Debuting in early 2025 under WFP's School Feeding portfolio and the ADAPT\*\* project, the series aims to encourage responsible food consumption and promote healthy family meals among schoolchildren and their families.

The 16-episode series reached over 2 million TV viewers, generated 6.3 million Facebook views and 1.6M YouTube replays. Positive results identified include an 11 percent rise in vegetable consumption, 12 percent shift from homemade snacks, and 33 percent of families dining together, positioning *Salla Salla* as an effective model for SBCC edutainment.

\*\* ADAPT in French : 'Appui au Développement durable dans le secteur de l'Agriculture et de la Pêche artisanale en Tunisie.' ADAPT focuses on connecting supply chains, encouraging sustainable production, and linking consumption areas to production territories. For more information about the project. Read more on ADAPT [here](#).



The SBCC Salla Salla TV Series board – 2025 - @Lea Bertrand/ Ogilvy Paris

## Under Outcome 1, *Lomjti*\* project empowers School Feeding in Tunisia by diversifying their access to markets (as part of the ADAPT programme)

In September 2025, WFP partnered with Balades Solidaires, a local civil society organisation, to advance the [LOMJTI](#) project (*My Snack* in Tunisian Arabic) as part of the Home-Grown School Feeding (HGSF) initiative. As part of a pilot hot-meals project with the Ministry of Education, 86 tailored training sessions for a total of 640 participants were conducted, focusing on snack preparation, hygiene, marketing, and agroecological methods.

The HGSF approach connects local food production directly with the nutritional needs of the community. Networking events brought Agricultural Professional Organizations (OPAs)—including cooperatives led by women—into contact with private sector partners. Following coordination with the Ministry of Education, 2,474 public school students and

652 private school students received a combined total of 22,873 snacks.

The project concluded with a closure event organised by Balades Solidaires, showcasing local products from 12 regions through smallholder farmers associations and hosting interactive workshops aired on national and private TV stations.

\* *LOMJTI* is a project title meaning "My Snack" in Tunisian Arabic.

## As part of **Strategic Outcome 1**, WFP supported forest firebreak maintenance in Tabarka through its Food Assistance for Assets activity

In September, WFP, under the Joint Programme on Accelerating Progress towards Rural Women's Economic Empowerment (JPRWEE) project in Tabarka, maintained 20 km of forest firebreaks and security tranches - exceeding the initial target of 12 km. The initiative improved livelihoods for forest area residents, with 300 participants - 96 percent women - contributing 7,300 working days and corresponding transfers worth TND 188,000 (USD 63,920), reaching 1,500 beneficiaries and supporting thousands more in surrounding communities.

This activity strengthened the capacity of local institutions, including the Directorate General of Forests and the Ministry of Agriculture, and is expected to foster better governance of Tunisia's forest heritage, ultimately improving the livelihoods of the 10 percent of Tunisians living in and around forests, especially the most vulnerable.



Beneficiaries, WFP Tunisia, Women's Association for Citizenship and Development (in French AFPCD) and DG Forests staff at Ain Baccouche Nature Reserve's firebreak area. Tabarka governorate – 2025 - WFP@ Mouhanned Jemli

## Under the CSP's **Strategic Outcome 1**, WFP handed over the Adaptation Fund project to UNDP in Tunisia

Following the endorsement of the Concept Note by the Adaptation Fund Board at its 43rd meeting, WFP Tunisia initiated a funding proposal for the USD 10 million project,

‘Strengthening adaptive capacity and livelihood security in the most vulnerable oases of Tozeur’.

Starting January 2026, WFP will become a non-resident agency. The project, coordinated with the Government of Tunisia, has been handed over to UNDP, now acting as the Multilateral Implementing Entity (MIE), replacing WFP. This transition maintains progress on the Funding Proposal, allowing Tunisia to access up to USD 25 million from the Adaptation Funds, thereby expanding support to vulnerable communities in rural areas disproportionately affected by the climate change related events.

### **Under Strategic Outcome 1, WFP handed over its role in the JP RWEE Programme to FAO in Tunisia**

With the completion of its CSP activities, WFP Tunisia transitions to a Non-Resident Agency and transferred its responsibilities within the multi-year Joint Programme on Rural Women’s Economic Empowerment (JP RWEE) to FAO.

Starting January 2026, FAO will lead coordination and implementation of the global JP-RWEE programme in Tunisia, collaborating with IFAD and UN Women to ensure continuity of activities and sustained support for rural women’s economic empowerment in Tunisia.

### **Under CSPs' Strategic Outcome 1, WFP helped strengthening Tunisia’s National School Feeding Programme through Canteen Rehabilitation, School Gardens, and Women-Led Agroecology**

With Monaco's support, WFP assisted the Ministry of Education and the Office of Scholastic Services (OOESCO) in strengthening the National School Feeding Programme and building institutional capacity. Efforts included rehabilitating six school canteens and revitalizing at least six school gardens in vulnerable in Silina, Kairouan, Jendouba, and Bizerte governorates.

During the reporting period, sensitization sessions on healthy eating and hygiene activities reached 700 students and their parents. Women-led agricultural collectives such as Agricultural Development Groups (GDA) [Collines d’Espoir](#) and GDA SMAR were mobilized to supply food and adopt agroecological practices.

Land rehabilitation across 125 hectares, hands-on organic farming training, and productive school gardens demonstrated clear sustainable benefits. These efforts involved over 400 participants, raising nutrition awareness, empowering women, and strengthening resilient local food systems for schoolchildren in Tunisia.

## **WFP concludes 15 Years of operations - Final Closures**

During the reporting period, WFP team in Tunisia worked to ensure smooth transition and operational closure of its programmes. Efforts focused on completing planned 2025 activities and transferring multi-year CSP programmes to appropriate partners.

As detailed in previous sections, the country team successfully completed activities in Tunisia by 31 December 2025. The transition was coordinated with government of Tunisia through Ministry of Foreign Affairs and relevant partner ministries.

Over the years, WFP Tunisia collaborated with 38 partners under the CSP, including donors, government departments, NGOs and other civil society organisations. In recognition of their critical contributions, on 9 December, WFP country team held a THANK YOU ceremony to appreciate their partnership and mark the closure of its Country Strategic Plan (2022–2025) and WFP’s exit.



*WFP’s Country Director with VP CP Balades Solidaires, representative from AICS, a representative from ARCS NGO and a representative from UTAP NGO– Tunisia, 2025 – @Oussema Hajji/ IKIGAI*

The event gathered government counterparts, cooperating partners, donors, and stakeholders to acknowledge their invaluable collaboration and collective achievements in advancing food security and social protection in Tunisia.



*The Monaco’s Development Cooperation Coordinator in Tunisia Wanessa Al Amri receives an appreciation trophy from WFP’s a.i Country Director and the Head of Programme Hazar Abdelkafi at the Consulate of Monaco – Tunisia, 2025 – WFP© Mohamed Sheikh*





Michel Le Pechoux, UNICEF Representative in Tunisia, receives a trophy of appreciation from WFP Tunisia Country Director in recognition of UNICEF's valued collaboration over the years. On the front right, former Minister of Education, Mr. Hatem Ben Salem – Tunis, 2025 – WFP © Aymen Said

Prior to the partner appreciation event, a staff THANK YOU and Farewell gathering was held on 9 December. The event was presided by the Acting Country Director and included a remote address from the Regional Director.

Each staff member received certificates and appreciation letters from WFP Executive Director, Country Director a.i., and Regional Director, recognizing their years of service and dedication, particularly during the challenging transition year of 2025.



WFP Tunisia staff receive trophies and certificates at an appreciation event in Tunis, 2025 – WFP/ Ahmed Houssini

## WFP Country Strategy



### Tunisia Country Strategic Plan (CSP) (2022-2025)

Total Requirement (in US\$)	Total received contributions (in US\$)
11.8 m	8.4 m

#### Strategic Result 4: Food systems are sustainable

**Strategic Outcome 1:** Vulnerable groups have increased economic opportunities and strengthened resilience to shocks and climate risks

**Focus area:** Resilience Building

##### Activities:

- Provide technical assistance to smallholder farmers

#### Strategic Result 5: Developing countries have strengthened capacities to implement the SDGs

**Strategic Outcome 2:** National institutions in Tunisia have strengthened their capacity to implement enhanced school meals and social protection programs that advance food security and nutrition by 2025.

**Focus area:** Root Causes

##### Activities:

- Provide technical assistance to national institutions through innovations, enhanced data, pilot transfer modalities and South-South cooperation.

## Donors

- Italian Agency for Development Cooperation (AICS)
- Principality of Monaco
- UNMPTF RWEE FUND (Sweden / Norway)
- European Union