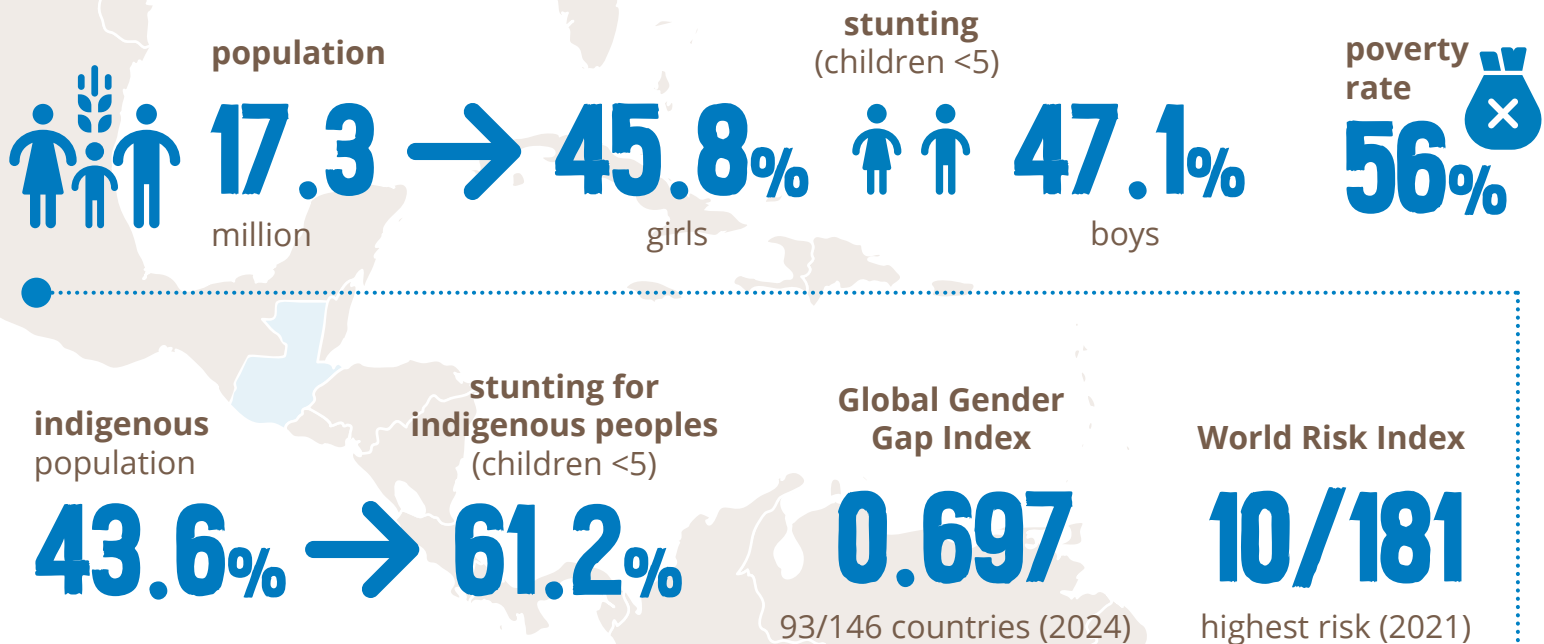
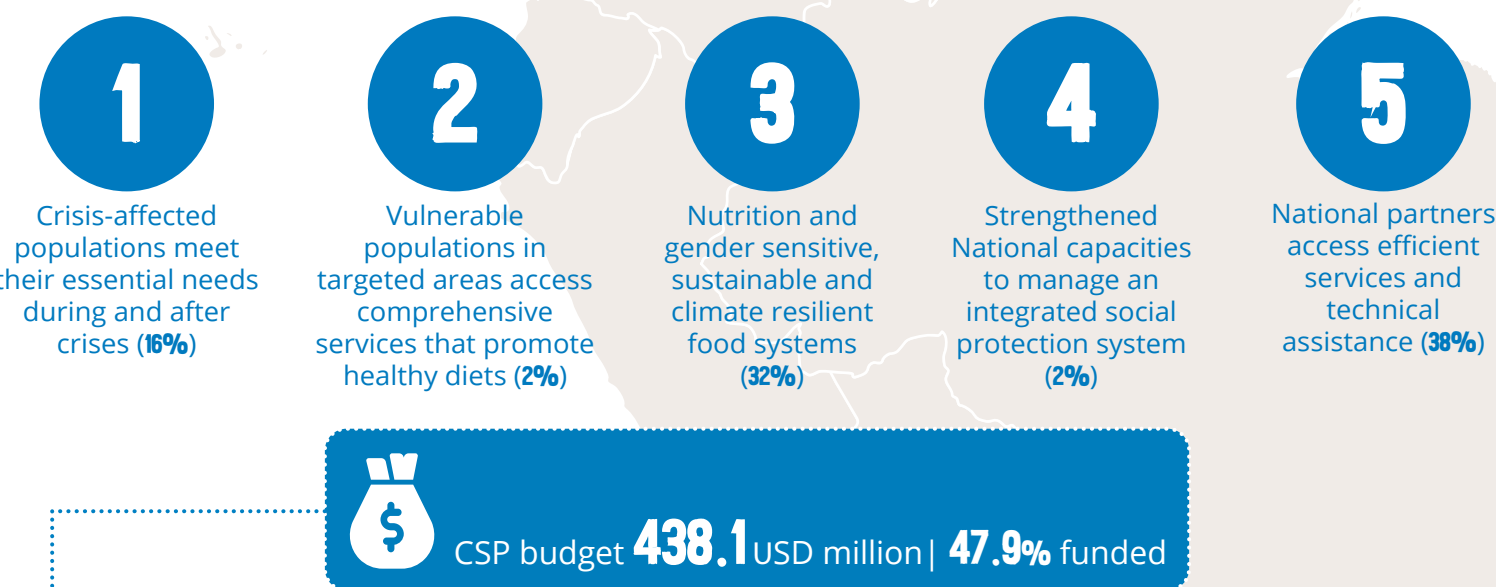


COUNTRY CONTEXT



COUNTRY STRATEGIC PLAN (CSP) focused on five strategic outcomes



KEY FINDINGS & CONCLUSIONS

RELEVANCE AND ADAPTABILITY



Ensured continuity of assistance and expanded coverage in a dynamic context with emerging needs



Continued alignment with government in priority areas like anticipatory action and climate change

EFFECTIVENESS AND SUSTAINABILITY



Positive effects on household incomes and food consumption during responses to emergencies, although not sustained



Strengthened national nutrition and food security programmes, through procurement services and evidence generation



Strengthened smallholder farmers' position in supply chain and resilience. Limited institutional anchorage challenged scaling up

ON-DEMAND SERVICES FOR NATIONAL SOCIAL PROTECTION PROGRAMMES



Procurement for the national food assistance programmes to over 300 municipalities since 2021



Cost reduced by 29% and food availability increased by 14%



Sustainability of such gains remains a challenge



Potential reputational risks need to be properly assessed and managed

CROSS CUTTING ISSUES



WFP promoted women's economic empowerment, notably of indigenous women, with indirect beneficiaries across 32 communities



Attention to cultural appropriateness improved participation of indigenous peoples, though more can be done



Feedback and accountability mechanisms supported transparency. Challenges remain in improving accessibility and communication

EFFICIENCY OF WFP OPERATIONS



Timely emergency response, but slow execution of resilience activities

RECOMMENDATIONS



KNOW MORE

Brief

Summary Report

Full Report