



WFP Cuba Response / Hurricane Melissa

29 October 2025 – 16 February 2026

- Hurricane Melissa left an estimated **2.2 million people in need across 33 municipalities in eastern Cuba**. The hurricane caused widespread damage to food production systems, livelihoods, water sources, and essential household assets, compounding the impact of what is already Cuba's most severe socioeconomic crisis in decades.
- As part of the Anticipatory Action Framework, WFP initiated the transport and distribution of **697 metric tons of rice, pulses, and vegetable oil 72 hours before Hurricane Melissa** made landfall in the eastern provinces, reaching **140,000 people in protection centres during the first week**.
- After Melissa, the United Nations System in Cuba activated an Emergency Response Action Plan, within which WFP Cuba defined a **comprehensive 12-month strategy** to assist affected populations. The Plan moves from initial broad coverage in most affected municipalities to a progressive prioritization of the most vulnerable population groups (children under 5-years, older people, and pregnant women). The phased approach ensures life-saving food assistance during the most critical months, while supporting household stabilization as agricultural systems recover, markets gradually restart, and basic services are restored.
- Thanks to the use of **prepositioned reserves**, an advance from the Immediate Response Account (IRA), and the swift support of strategic partners, WFP has been able to scale up its response operation, reaching **more than 850,000 beneficiaries in the affected municipalities**, providing food assistance during the most critical phase of the response, and supporting the transition toward early recovery.
- The WFP response operation requires a total mobilization of US\$ 30 million (**US\$ 19.2 million still pending to be secured**).
- These resources are essential to support the WFP food basket (rice, pulses, and vegetable oil) and to procure canned foods that will help improve the nutritional adequacy of the rations delivered to the affected populations.

16/02/2026

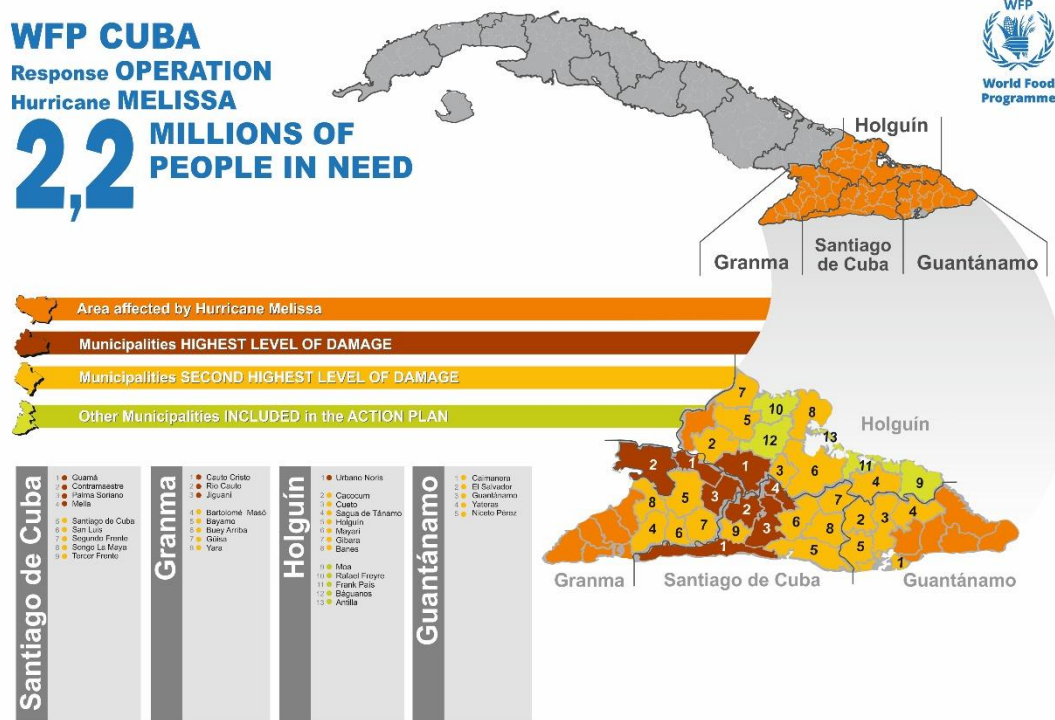


Prepositioning of food and non-food items

WFP Cuba always maintains a food stock (rice, pulses, and vegetable oil) to assist **275,000 people** for a period of **60 days** in case of emergency.

Likewise, non-food items are **prepositioned**, including mobile storage units, lighting towers, warehouse repair kits, pallets, and tents.

WFP CUBA
 Response OPERATION
 Hurricane MELISSA
2,2 MILLIONS OF PEOPLE IN NEED



Funds mobilized up to FEBRUARY 2026

\$USD 10.7 MILLION

Pending mobilization

\$USD 19.2 MILLION

