

THE WORLD FOOD PROGRAMME INNOVATION ACCELERATOR

2025 YEAR IN REVIEW

# Driving *progress* and *hope*



**INNOVATION  
ACCELERATOR**

**1 Introduction.....2**

**2 Who we are..... 4**

    2.1 Innovation at WFP.....4

    2.2 The WFP Innovation Accelerator..... 5

    2.3 Where we work..... 7

    2.4 Partners and Co-creators..... 7

**3 What we do..... 9**

    3.1 SDG2 Acceleration..... 11

    3.2 Scale Up Enablement..... 55

    3.3 Frontier Innovations.....67

    3.4 Innovative Finance.....81

    3.5 SDGx Acceleration..... 85

    3.6 Innovation Network..... 118

        Convening and culture.....121

    3.7 Communications and Knowledge Management.....123

        In the news..... 123

        Social media..... 124

        Knowledge management..... 125

        WFP Innovation Exhibition..... 125

**Appendix..... 127**

    A.1 Programme cohorts.....127



# 1 Introduction

**Dear friends and supporters,**

*2025 has been a year of immense challenges: 318 million people face acute hunger across 67 countries, with nearly two million on the edge of famine. Yet, innovation has been a source of hope, helping us reach more people, more efficiently, when it matters most.*

**Here are a few highlights:**

- **Delivering faster and smarter: *SCOUT***

Delivering humanitarian assistance to people in need starts with smart choices about what to deliver, when and how. [SCOUT](#), our artificial intelligence-powered logistics system, combines data and market intelligence to guide these decisions. In only 18 months, SCOUT has saved USD 6.2 million - enough to provide a full month of life-saving food assistance for 300,000 people. Its artificial intelligence forecasting engine cuts planning costs by 10 percent. Its new artificial intelligence forecasting engine cuts planning costs by 10 percent, doubling efficiency gains from 2024. As SCOUT scales globally, it is set to save over USD 25 million annually, resources we can reinvest directly into reaching more people.

- **Speeding up emergency response: *Building Blocks***

[Building Blocks](#) has grown into the world's largest humanitarian solution built on blockchain technology. In 2025, 159 organizations across multiple countries used it to coordinate assistance, collectively saving USD 288 million, avoiding unintended assistance since 2022. By connecting partners on a single secure platform, Building Blocks improves transparency, streamlines access and ensures households receive the right support faster. Now part of our Frontiers portfolio, the team is

working to develop the technology with WFP colleagues at the technology unit, drive wider adoption across WFP and with partners and explore new use cases.

- **Fortifying food for families: *Sanku***  
[Sanku](#) equips small and medium flour mills with simple machines that add essential vitamins and minerals to maize and wheat flour. This means families in rural Tanzania, Ethiopia and Kenya can rely on their daily flour to provide the nutrients they need, especially children, who can grow healthy and strong. In 2025, Sanku reached 59.3 million people, turning everyday meals into a source of strength for millions more families.
- **Innovating with AI: *The Strategic AI Partnership for Humanitarian Actions***  
 What happens when the scientists behind the world’s most famous particle accelerator join forces with WFP? In 2025, our [strategic partnership](#) with CERN, the European Organization for Nuclear Research, the Luxembourg Institute of Science and Technology (LIST) and the Government of Luxembourg marked its first anniversary. By combining CERN’s cutting-edge artificial intelligence expertise. LIST’s expertise in earth observation and crop modeling and WFP’s operational know-how, we are creating new ways to enhance humanitarian action. Together, we piloted the Registration Anomalies Detection tool, showing how artificial intelligence can safeguard resources and ensure assistance reaches those who need it most. In 2026, we will scale this and other open-source innovations across WFP operations to unlock even greater impact and efficiencies across the wider humanitarian ecosystem.
- **Scaling technology-driven solutions: *The Humanitarian Innovation Accelerator***  
 Supported by the Government of Luxembourg, our [Humanitarian Innovation Accelerator Programme](#) brings together innovators, humanitarian organizations, the private sector and partners to tackle urgent challenges with technology-driven solutions. The first group of ventures that closed their sprint in 2025 reached more than 260,000 people. Their tools were adopted by 15 humanitarian organizations and raised over USD 1.2 million in additional grant funding. One example is Jangala, whose plug-and-play internet solution delivered high-speed connectivity to displaced communities in Kenya.

Furthermore, we welcomed international guests at our WFP Innovation Forum in Munich, Germany at the sidelines of Munich Security Conference and opened the Regional Innovation Hub for West and Central Africa in Dakar, Senegal.

**Together, these stories show how innovation strengthens every part of WFP’s work, boosting efficiency and delivering greater results for the people who need it most.**

None of this would be possible without the dedication of our colleagues, partners, innovators and supporters. We are deeply grateful for your commitment and collaboration. Each of you plays a vital role in creating impactful solutions that save and change lives.

For 2026, our focus stays simple: building WFP’s efficiency and effectiveness through results-driven innovation led by our country offices. With the upcoming launch of the WFP Innovation Strategy, we are charting the next chapter of innovation across the organization, demonstrating how it can help WFP deliver even greater results for the communities we assist.

**I am looking forward to continuing this innovation journey together.**

Warmly,

**Bernhard Kowatsch**

*Director Global Accelerator and Ventures*

## 2025 *in numbers*





## 2 Who we are

### 2.1 Innovation at WFP

Innovation is at the heart of WFP's efforts to redefine what is possible in humanitarian response. As humanitarian needs continue to rise and crises become more complex, WFP is accelerating its ability to adapt, respond and deliver impact at scale. Innovation plays a central role in this transformation, enabling efficient and effective solutions for people in need around the world.

Across WFP, innovation is embedded in daily operations. Country offices are the engines of innovation at WFP. Together with global headquarter teams, WFP colleagues identify challenges, implement solutions and accelerate approaches that improve efficiency, strengthen resilience and expand access to essential services. Today, innovation activities are active across 19 WFP units, supported by a global community of around 600 Innovation Champions in 165 duty stations. The WFP Innovation Network cultivates innovative mentalities and shares scalable solutions across the organization.

This system-wide approach ensures that innovation is not a standalone function, but a shared capability that empowers WFP teams to deliver better outcomes, from emergency response to long-term development, and bring us closer to a world free of hunger.



## 2.2 The WFP Innovation Accelerator

### About us

The WFP Innovation Accelerator was launched in 2015 in Munich, Germany, with support from the German Federal Ministry for Economic Cooperation and Development (BMZ), the German Federal Foreign Office (GFFO) and the Bavarian State Ministry of Food, Agriculture, Forestry and Tourism (StMELF). Its mission is to source, pilot and scale high-impact innovations that can transform the fight against hunger and accelerate progress toward Zero Hunger.

From its base in Munich, the Accelerator works hand in hand with innovators inside and outside WFP, from start-ups and social enterprises to research institutions and WFP teams across more than 120 countries and territories. By combining funding, hands-on technical support, mentorship and access to WFP's global operational footprint, the Accelerator helps promising solutions deliver real-world impact. It implements, scales and innovatively finances solutions, ensuring that innovations can reach global adoption. Whether exploring frontier technologies, strengthening food systems, supporting country-driven innovation or enabling new financing models, the Accelerator catalyses and supports transformative solutions.

Over the past decade, the WFP Innovation Accelerator has grown into one of the world's leading social impact startup accelerator platforms, helping WFP reach more people, more efficiently, when it matters most.

"The Free State of Bavaria continues to be a proud founding supporter of the WFP Innovation Accelerator. From the outset, the WFP Innovation Accelerator has been instrumental in advancing innovative approaches to the global fight against hunger. Bavaria remains deeply committed to the formative role it has played in the creation and development of this impactful institution."

*Michaela Kaniber, Bavarian State Minister for Food, Agriculture, Forestry and Tourism*

## What the WFP Innovation Accelerator achieved in 2025

In 2025, the WFP Innovation Accelerator ran 14 programmes addressing a wide range of social impact and sustainability challenges. Innovations and ventures that have received support from the WFP Innovation Accelerator reached 132.5 million people across 75 countries and territories throughout the year. The Accelerator directly supported 85 innovations in 2025, and an additional 29 alumni innovations shared their annual impact. Since its launch in 2015, the Accelerator has catalysed over USD 383 million in funding, enabling innovations to scale sustainably and deliver impact at speed.

The innovations that the Accelerator supports contribute to the broader humanitarian and development community. 102 organizations implemented innovations in the Accelerator portfolio, saving more than USD 301 million - money that can save and transform people's lives when re-invested in communities. 32 governments also adopted our innovations, led in large part by WFP country offices who drive local ownership of assistance programmes.

At WFP, 56 operational offices adopted machine learning, blockchain, artificial intelligence, robotics or drone technologies, spreading cutting-edge solutions across the world. Eight operational offices now include innovation as a key element of their country strategic plans, revolutionizing how WFP approaches its operations.

## Strengthening innovation across WFP and the wider UN system

The Accelerator enables and powers WFP's global innovation community within WFP. This includes 20 country offices with dedicated innovation focal points or teams, three regional innovation hubs in Eastern and Southern Africa, Western and Central Africa and Latin America and the Caribbean, and a diverse network of more than 600 Innovation Champions across 165 duty stations. Together, these teams help embed innovation into WFP's operations, ensuring that solutions are rooted in local realities and designed for long-term impact.

The Accelerator also plays a key role in building up innovation across the wider UN system. Together with UNICEF and UNDP, WFP co-leads the UN Innovation Network, a community of innovators from more than 70 UN entities working to share knowledge, accelerate learning and advance system-wide innovation. Through this collaboration, WFP contributes to the UN 2.0 agenda and helps shape how innovation supports global efforts to reach the Sustainable Development Goals.

## Creating the first-ever organization-wide Innovation Strategy

“True innovation happens when purpose meets partnership. Working with WFP gave us a chance to exchange ideas on how large organizations can embed innovation at scale, not as a project, but as a mindset. What stood out was WFP’s commitment to making innovation part of how its people think, lead and deliver impact every day. That shared belief, that innovation serves people, is what makes this collaboration so powerful.”

*Justin Rose, President, Worldwide Agriculture & Turf Division, Small Agriculture and Turf Care, Europe, Africa, and Asia, Deere & Company/John Deere*

In 2025, WFP began implementing the first-ever WFP Innovation Strategy that positions country offices as engines of innovation, enhancing efficiency, effectiveness and results across WFP.

The strategy focuses on four core goals: empowering in-country teams, scaling high-impact solutions, deepening collaboration with governments, the private sector and research institutions, and embedding a stronger culture of innovation across the organisation. Thanks to the generous contribution of the John Deere Foundation, the strategy ensures WFP can leverage cutting-edge technologies, digital solutions and innovative finance models to co-create solutions with and for the people it serves.

Alongside this work, WFP began activities detailed in the strategy designed to cultivate innovation culture across WFP. These activities included introducing colleagues to the WFP Innovation Database, the re-launch of the WFP Innovation Award, the successful delivery of WFP Innovation Week 2025 and the launch of the WFP Innovation Exhibition at WFP headquarters during the November 2025 Executive Board. Together, these efforts laid the foundation for the full strategy launch in 2026 and for embedding its principles into WFP’s global operations.



We also marked one year of our strategic partnership on AI with Luxembourg, CERN and the Luxembourg Institute of Science and Technology (LIST). In October, we launched the second edition of the Humanitarian Innovation Accelerator (HIA) with support from the Government of Luxembourg.

“Innovation is a great opportunity to bring people together from different sectors to foster collaboration and reduce the duplication of efforts within the humanitarian sector, and the programmes Luxembourg is working with the Accelerator on are a great example of this.”

*Gilles Hoffmann, Emergency Coordinator, Ministry of Foreign and European Affairs, Luxembourg*

In 2025, we built upon our strong relationships with the governments of Austria and France, who provide essential flexible support to the Innovation Accelerator, ensuring that we can strategically allocate funding towards the areas of greatest need and potential. Separately, we continued our strong relationship with Norway, who funded school-meal innovation expansions to Colombia and Ecuador via Innovation Norway.

We deepened our partnerships with the Austrian Development Agency, the Austrian Federal Chancellery, the Gates Foundation, Luxembourg, the German Agency for International Cooperation (GIZ) and the Kofi Annan Foundation, which enabled SDGx acceleration platforms to grow in ambition and reach throughout 2025. SDGx also collaborated with the UN Humanitarian Response Depot (UNHRD) and the Emergency Telecommunications Cluster (ETC) to enhance interagency efforts. Across sectors, collaborators such as Dubai Humanitarian, UNICEF, UNHCR, UnternehmerTUM and the Westerwelle Foundation strengthened system-wide capabilities.

In 2025, WFP announced an expanded partnership with the United Nations Capital Development Fund (UNCDF), focusing on scaling innovative finance through WFP Innovation BRIDGE. Together, we will leverage UNCDF’s development finance expertise and the WFP Innovation Accelerator’s ability to source, incubate and scale high-impact innovations to provide concessional loans to startups and social businesses that work towards zero hunger.

In 2025, we deepened and expanded our private sector partnerships. Our longstanding partnership with John Deere enabled us to support more smallholder farmers and develop WFP’s Innovation Strategy. We continued our groundbreaking partnership with Netlight, scaling new AI solutions. BASF Stiftung continued its multi-year support to integrated resilience and post-harvest management in Ethiopia. The Citi Foundation supported the financial inclusion of women smallholder farmers in Zambia.

“It’s a true honour to assist the World Food Programme in the fight against world hunger, where tech innovation is one of our ways of playing a part. In 2025 we used our network to support impactful projects like SKAI+, School Connect, Scout, and PULSE, with the official launch of Displacement Watch as a standout milestone. This partnership allows us to make positive social impact far beyond what we could achieve alone.”

*Frederick Pietzcker, Partner, Netlight*

In collaboration with the World Bank, we launched the Global Ag-tech Innovation Facility, which has already scaled ag-tech innovations in Kenya and intends to expand across Eastern Africa. Together, we are also developing the WFP Food Security Catastrophe Bond. In partnership with the Adaptation Fund, the Climate Innovation Accelerator (AFClIA) began its second year of implementation and launched a new cohort open to innovations from Nepal, Pakistan and the Philippines.

In 2025, we hosted our annual WFP Innovation Forum, where many of these partners came together on the sidelines of the Munich Security Conference to create forward-looking discussions on scaling innovation and collaborating cross-sector. We also welcomed Munich's dynamic innovation ecosystem to our office to discuss how to leverage artificial intelligence to help solve the world's toughest humanitarian challenges at *Evolving for Impact: AI for Humanity*, an official side event of *Bits & Pretzels*. Throughout the year, these events and partner visits advance innovation agendas around the world with thoughtful engagements.





## 3 What we do

### How to read this section

The following section includes the descriptions and results of the entire WFP Innovation Accelerator portfolio. Innovations are listed by WFP Innovation Accelerator circle, activity status (active/alumni) and then alphabetically. For each circle, there is a brief description of the circle's cumulative achievements throughout the year.

### Key terms

#### Active innovation

The team or organization was supported by the WFP Innovation Accelerator through funding or in-kind support at some point or throughout 2025.

#### Alumni innovation

The team or organization has been previously supported by the Accelerator, closing their formal relationship prior to 2025.

#### Thematic area

A subdivision of the portfolio that aligns innovations with WFP programmatic areas and strategic goals.

*In 2025, there are eight: Food systems & smallholder farmers, Nutrition, Resilience & sustainable livelihoods, Workplace & management, Supply chain & delivery, Emergency preparedness & response, School meals & social protection, and Programmes & systems for the SDGs.*

#### Cross-cutting theme

A subdivision of the portfolio that describes characteristics that impact multiple sectors, disciplines or project components simultaneously rather than sitting within one silo

*In 2025, there are two: climate action and gender.*

**External innovation**

Team or organization external to WFP. Often, these are independent ventures who do not exclusively support WFP operations.

**Internal innovation**

Venture or team based within WFP, comprising WFP colleagues and supporting WFP operations.

**Programme**

Programmes are specific, donor-funded workstreams that often have a unique brand name and identity. If an innovation is not grouped into a programme, it is part of the Accelerator's core programming, often supported by strategic allocation of flexible funding.



## 3.1 SDG2 Acceleration

The SDG2 Acceleration team sources, supports and scales high-impact innovations that strengthen WFP's ability to save and change lives. In 2025, the team translated this into operational results, connecting proven solutions with frontline teams and improving delivery in some of WFP's most complex environments.

Across conflict-affected and high-risk settings, the team enabled innovations using advanced technologies such as artificial intelligence and machine learning, geospatial analytics or biotechnology to deliver measurable gains. Supply chain and delivery tools such as SCOUT generated USD 6.2 million in cost savings in 18 months through AI-driven planning. In Afghanistan, PULSE applied machine learning to reinforce famine early-warning systems for more than 2 million people in 2025. In Gaza, People Portal reduced registration costs by USD 9.4 million, accelerating assistance for vulnerable communities. These outcomes show how a structured, portfolio-based approach reduces silos, speeds deployment of validated solutions and helps WFP deliver impact despite constrained resources.

The SDG2 Acceleration team deepened collaboration across the UN system to advance shared, system-level solutions. The team accelerated innovations such as PREDICT along with Danish Refugee Council, which leverages machine learning to forecast displacement data in advance. This data, hosted in the AHEAD dashboard, is being used by several other UN agencies, creating a ripple effect of impact.

In 2025, the team also expanded its partnership with the Adaptation Fund, positioning innovation at the nexus of climate adaptation and food security. Localized programmes implemented solutions in Lebanon, Egypt and Jordan, and a second cohort launched in the Philippines, Pakistan and Nepal. In parallel, collaborations with CGIAR and the International Water Management Institute (IWMI) through the Stability-and-Peace Accelerator advanced innovations in Kenya, Nigeria and Rwanda, equipping solutions in fragile settings with targeted scientific support. Together, these partnerships show how coordinated innovation efforts can build lasting resilience for communities facing layered challenges.

## Adaptive Symbiotic Technologies



**Thematic area:** Food systems and smallholder farmers

**Cross-cutting themes:** Climate action

**Active in:** Egypt

**Internal / External innovation:** External



*A farm with half of its crops treated by Adaptive Symbiotic Technologies' bio-enhancements and half non-treated, Jordan. | Photo: Russel Rodriguez, AST*

### Innovation overview

Adaptive Symbiotic Technologies (AST) produces BioEnsure, a series of seed, crop and tree applied bio-enhancements that make crops more resilient to heat, drought and salinity while cutting water and synthetic fertilizer needs. AST scientists harnessed plants' natural root symbioses with microscopic fungi to create BioEnsure, which integrates during germination and improves stress tolerance within 24 hours. Paired with BioTango, a bacterial fertilizer, the solution further reduces fertilizer dependence and strengthens climate protection, increasing biomass, yields and crop

quality. The solutions offer a scalable, low-input solution for climate-stressed smallholder and commercial farming systems.

### Accelerator role

The WFP Innovation Accelerator supported AST's proof of concept testing and market expansion in Jordan by convening national partners such as the National Agricultural Research Centre, Ministry of Water and Agriculture and the Jordan University of Science & Technology, facilitating farmer outreach for field trials, feedback and pricing tests, and creating private-sector linkages for long-term sustainability. The team delivered targeted workshops and mentorship to upskill the team and hosted an investor roundtable to connect AST with potential future funding to scale their work in Jordan.

### Results

In Jordan, AST's solutions, BioEnsure and BioTango, reached 1,767 smallholder farmers and their households, delivering an average of 48 percent yield increase.

Across Jordan, India, Ghana, North America and Australia, thousands of farmers use these solutions to withstand climate stress, secure more animal fodder, access export markets, raise farm incomes and cut fertilizer and water use. Most importantly, BioEnsure and BioTango have saved crops during prolonged droughts and extreme heat, strengthening food security and resilience for small landholders while improving productivity and market opportunities.

### Quote

"The first time I heard of the AST BioEnsure and BioTango products, I was in doubt if it

could really cause the change I needed in my farm. After last year’s testing on my maize farms, I wish I had listened to the young man to use it on all my farms. Along the season, there was a sudden drought that came to destroy all our farms. I had 15 acres of maize farm without the usage of BioEnsure and BioTango and I lost everything. At a different farm (3 acres) where I applied the BioEnsure

seed and foliar treatment was the only farm I harvested 8 bags of maize to feed my family. Upon seeing this result, I would like to be the largest distributor of AST BioEnsure and BioTango in the Bono East Region. I call it a game changer.”

—Mr. Gyamfi, Head of Kintampo Mango and Grain farmers, Kintampo, Bono East Region, Ghana

## Al-Reef Mushroom

**Thematic area:** Resilience and sustainable livelihoods

**Cross-cutting themes:** Climate action

**Active in:** Iraq

**Internal / External innovation:** External



Mushroom harvest grown by farmers in Mosul. | Photo: Al-Reef Mushroom

### **Innovation overview**

Alreef Mushroom provides 100 percent organic, locally-produced mushrooms using innovative, eco-friendly farming techniques, such as vertical farming and air humidification systems. The process involves recycling organic waste into compost for mushroom production in closed agricultural incubators resistant to external conditions. This sustainable approach conserves water, ensures reliable, year-round production and offers a variety of high-quality, fresh mushrooms not commonly found in the local Iraqi market. The remaining compost is converted into organic fertilizer for local farmers.

### **Accelerator role**

Through the PALM Iraq Innovation Programme, the WFP Innovation Accelerator supported Al-Reef Mushroom with training farmers, introducing food safety and quality practices, improved packaging, and linked them to local markets through the startup.

The team participated in a venture-coaching workshop and is now developing a scaling and sustainability roadmap with WFP Innovation Accelerator guidance, supported by broader ecosystem and government engagement.

### Results

During their first sprint, Alreef successfully built a new composting facility to enable local compost production. The initiative trained 40 farmers and 10 students in growing mushrooms at home and supported them in connecting with local markets. Overall, the project reached 362 people, led to the creation of five new jobs and an increase of 30 percent in income. Alreef is now setting up the first local composting facility for mushrooms in Iraq, to ensure the venture sustainability in the long run.

### Quote

"The WFP Innovation Accelerator has provided immense benefit to us and the community. Their strategic guidance and resources allowed us to expand our scope of work and adopt an innovative mindset. This has led to supporting the community by reaching diverse sources from needy populations on a much broader scale than we ever anticipated, achieving our shared goal within a very short timeframe."

—Mohammed Alrawi, Project Manager

### Read

[How WFP is supporting local innovators in making Iraq food-secure](#)

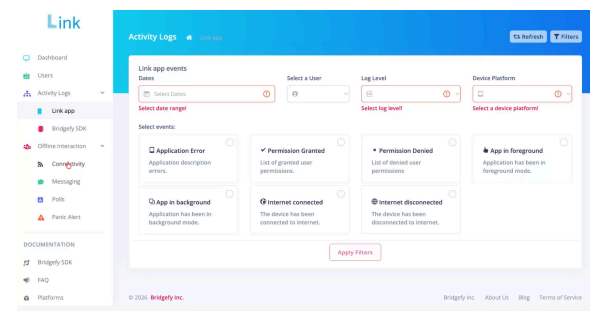
## Bridgefy

**Thematic area:** Workplace management, Emergency preparedness and response

**Cross-cutting themes:**

**Active in:** HQ

**Internal / External innovation:** External



*The Bridgefy Link App platform activity log dashboard designed to enable secure messaging in connectivity-constrained environments. | Photo: WFP/Asia Sultan*

### Innovation overview

Bridgefy is testing Link App, a Bluetooth-based communication platform designed for disaster zones, remote areas and conflict settings where cellular and internet networks fail. The app enables secure messaging, voice notes, images and location sharing without connectivity, offering a low-cost, resilient alternative to radios and satellite services. Field tests are exploring its ability to speed up headcounts, coordinate responses, and share real-time situational information to enhance safety and decision-making in connectivity-constrained environments.

### What was the Accelerator's role?

The WFP Innovation Accelerator supported Bridgefy in designing the proof of concept, the hypothesis to test and testing plans for user testing in the field. It also helped finally, carry out user tests. The WFP Innovation Accelerator provided coaching to foster creative problem-solving and agile methodologies, ensuring efficient coordination, timely delivery and optimal resource use.

### Results

Bridgefy's proof of concept was developed and validated through initial testing, confirming early functionalities and user needs. The proof of concept evolved into a minimum viable product, which will undergo a second round of testing in Q1 2026. Post testing, a beta rollout is planned for Q4 2026 to stress test connectivity and integrate user feedback to improve the platform.

## [Carbon Credits Tanzania](#)

**Thematic area:** School meals

**Cross-cutting themes:** Climate action

**Active in:** Tanzania

**Internal / External innovation:** Internal



*Students receiving lunch at a school in Tanzania, where Carbon Credits Tanzania is implementing clean cooking methods. | Photo: WFP*

### Innovation overview

Carbon Credits Tanzania tackles the health, safety and environmental challenges of three-stone cooking fires in WFP-assisted schools in Tanzania. It aims to provide electric cooking solutions to 50 primary schools and promote local awareness and adoption, particularly empowering women through training. The team works in collaboration with the National Carbon Monitoring Centre, Sustainable Energy for All (SEforALL) and local public schools. It also aims to generate carbon credit revenue to reinvest in the innovation's sustainability and scaling.

### Accelerator role

The WFP Innovation Accelerator assisted the team in defining their roadmap for implementation, including supporting the development of the indicators and assessing the progress of the innovation implementation.

### Results

Carbon Credits Tanzania has transitioned the Kibasila Primary School in Dar es Salaam from firewood cooking to electric pressure cookers, demonstrating the feasibility of electric cooking solutions in schools. Building on this pilot's success, the project is expanding to 36 additional schools, with kitchen refurbishments completed and pressure cooker installations forthcoming in Dar es Salaam. Additional refurbishment works will

conclude in Dodoma, Tabora and Kigoma by the end of the first quarter of 2026. Carbon Credits Tanzania aims to scale to 50 primary schools and 50,000 students, saving an estimated 20 percent in cooking fuel costs and reducing emissions.

### Lessons learned

Addressing multiple angles of innovation implementation, such as infrastructure readiness, cook training and day-to-day workflow management contributed to Carbon Credit Tanzania's pilot success in Kibasila Primary School.

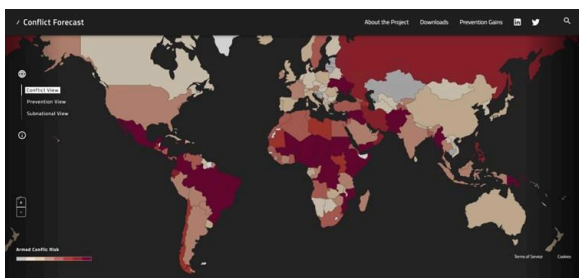
## Conflict Forecast

**Thematic area:** Emergency preparedness and response

**Cross-cutting themes:** N/A

**Active in:** Kenya, Somalia

**Internal / External innovation:** External



An overview of Conflict Forecast's global conflict risk view. | Photo: Conflict Forecast

### Innovation overview

Forecasting access disruptions in conflict and displacement settings is challenging due to complex factors and limited data. Conflict Forecast uses dynamic programming and predictive analytics to generate national and

subnational conflict forecasts and implement cost-effective response interventions.

### Accelerator role

The WFP Innovation Accelerator provided the Conflict Forecast team expert support in product design and development alongside the WFP HQ conflict sensitivity team to build a global model. The team is being supported by the Accelerator to build robust interagency delivery and business models, thereby improving their long-term value proposition. Business planning support boosted growth strategies and sustainability, while collaboration with an innovation consultant enabled product expansion.

### Results

Forecast-based humanitarian action enables early preparedness in conflict-affected areas. Using 10 million news articles, the Conflict Forecast model predicts local conflict intensity with 97 percent confidence levels. Together with WFP's Early Warning and Emergency Preparedness teams in Somalia, Conflict Forecast aims to generate cost savings of up to USD 1 million per country through a multi model approach.

"We are really excited by this opportunity to turn our research efforts into a tangible product for organizations working in conflict affected areas."

—Hannes Mueller, Principal Investigator, Fundació d'Economia Analítica (FEA)

## Read

[Conflict Forecast: Predicting and preventing disruptions in humanitarian aid](#)

## [Deploy Tech](#)

**Thematic area:** Food systems and smallholder farmers

**Cross-cutting themes:** Climate action

**Active in:** Jordan

**Internal / External innovation:** External



*Deploy Tech's durable water tanks are transforming safe and reliable water access and management. | Photo: Deploy Tech*

### Innovation overview

Deploy Tech's flat-packed, durable concrete water tanks offer a sustainable, easy-to-install solution for water storage and rainwater harvesting, addressing cost, durability and usability challenges. As a sustainable water tank option, Deploy Tech uses 75 percent less water and emits 77 percent less CO<sub>2</sub> than

conventional concrete, offering the lowest embodied carbon solution available. The innovation is transforming access to safe water and reliable water management in vulnerable communities, especially in extreme climates.

### Accelerator role

The WFP Innovation Accelerator supported Deploy Tech end-to-end, from convening stakeholders such as the National Agricultural Research Centre, Ministry of Water and Agriculture, Jordan University of Science & Technology, FAO, IFAD and farmers, conducting behavioural baselines and market research, sourcing pilot farms and logistics, deploying and documenting pilot tanks, building distributor partnerships, testing payment models, and leading monitoring, analysis and reporting to inform scale-up. The Accelerator upskilled the Deploy Tech team through targeted workshops and mentor support and hosted an investor roundtable to connect Deploy Tech with venture capital for potential future funding to scale their work in Jordan.

### Results

Deploy Tech installed 11 tanks in Jordan, four at Directorate of Agriculture sites and others under Agricultural cooperatives farms. They reached 205 farmers through field days that combined live installations with awareness sessions. The demonstrations showed rapid deployability, low maintenance needs and strong community engagement, validating the model in community and agricultural settings

and creating clear pathways for growth via public sector, cooperative and NGO partners.

## **Ecodash**

**Thematic area:** Supply chain and delivery

**Cross-cutting themes:** N/A

**Active in:** 15 country offices

**Internal / External innovation:** Internal



*The ECODASH platform aims to help WFP supply chain officers make informed, sustainable decisions for WFP operations. | Photo: WFP*

### **Innovation overview**

ECODASH will be an organization-wide tool for measuring, monitoring and analysing the carbon emissions from WFP supply chain operations. This will enable supply chain officers to make informed, sustainable decisions to reduce our carbon footprint and limit the negative environmental impacts of our operations.

### **Accelerator role**

The WFP Innovation Accelerator provided innovation coaching and methodologies, enabling the team to think beyond their initial scope. It also facilitated the discussions to integrate with other WFP digital solutions for greater impact, including Optimus, an alumnus of the WFP Innovation Accelerator Scale Up Enablement programme.

### **Results**

ECODASH has calculated emissions for two WFP regions, as well as for the procurement and shipping units. To date, ECODASH has identified and supported the elimination of over 3,000 metric tons of CO<sub>2</sub> emissions through more sustainable procurement practices, with the potential to reduce total supply chain emissions by approximately 22 percent.

### **Quote**

"Working with the ECODASH and Optimus teams has been a great example of how data-driven tools can help us cut emissions without compromising support to children in Haiti, delivering real, measurable progress toward our commitment to go greener."  
 —Thomas Deville, Deputy Head of Programme, WFP South Sudan, who previously supported ECODASH's deployment in Haiti.

### **Lessons learned**

Partnering with academia and the private sector provided valuable knowledge, expertise, tools and methodologies for ECODASH's development, enhancing its calculations of indirect emissions.

## **ENHANCE**

**Thematic area:** Nutrition

**Cross-cutting themes:** Gender, Climate action

**Active in:** WFP HQ

**Internal / External innovation:** Internal



*ENHANCE helps assess the accessibility of adequate diets for food-insecure and vulnerable populations. | Photo: WFP/Michael Tewelde*

### **Innovation overview**

The ENHANCE platform assesses economic access to adequate diets by measuring food availability, affordability and nutritional adequacy, with a focus on food-insecure and vulnerable populations. It diagnoses local food-system gaps, quantifies the cost of nutritious baskets and balances nutrition goals with affordability and sustainability to guide agricultural investments, policy and programme design.

WFP nutrition teams and decision-makers use ENHANCE for operational planning and targeting. ENHANCE supports subsidy, market and supply-chain interventions. At scale, the platform would be used by other UN agencies or governments to inform policy, prioritize investments and monitor equitable, resilient progress toward improved diet access.

### **Accelerator role**

The WFP Innovation Accelerator supported ENHANCE to develop version 2.0, which implements performance optimizations and UX improvements, establishes a multilingual infrastructure, translates core analytical terminology into priority UN languages, localizes user guidance, and delivers training to ensure an accessible, stable platform rollout across target regions.

### **Results**

ENHANCE launched version 2.0 of the platform with training conducted across eight countries during Q1 2026. Enhance piloted in two countries and has been tested with analysts across 14 WFP country offices. In Zambia, it informed anticipatory action using 12 years of diet, nutrition and climate data. In 2025, it saved WFP USD 25,000 and, after global headquarters' full transition from the Cost of the Diet, saved about 500 work hours.

“The ENHANCE platform embodies our vision at the World Food Programme: a world where technology empowers everyone to access analytics to gain further insights into how to improve diets for better health and nutrition in an affordable and feasible way given locally prevailing conditions. It is not just an innovation; it is our commitment towards a healthier, hunger-free future.”

—Saskia de Pee, Senior Advisor, Analytics & Science for Food & Nutrition, WFP

## EWS\_Conflict & Displacement

**Thematic area:** Emergency preparedness and response

**Cross-cutting themes:** N/A

**Active in:** Somalia

**Internal / External innovation:** Internal

### Innovation overview

EWS\_Conflict & Displacement is a multi-model forecasting protocol that advances WFP’s early warning and anticipatory response in conflict-affected food-insecure settings by integrating high-quality conflict and displacement models. It evaluates multiple tools to build an ensemble protocol supporting country offices with improved targeting, anticipatory action, optimized logistics, reduced costs and greater impact in high-risk settings. Ultimately, it supports decision-makers in preparing for conflict-driven food security escalations.

### Accelerator role

The WFP Innovation Accelerator has supported the end-to-end user design of the tool through dedicated design workshops. It has also helped integrate forecasting models from other sprints, including PREDICT, Displacement Watch and Conflict Forecast, and explored potential Netlight support for additional technical resources.

### Results

The tool has the potential to reduce food pipeline breaks, enable earlier resource mobilization, and generate cost savings

through improved logistics planning. For instance, reducing reliance on airlifts by 10 percent during a crisis could save WFP more than USD 1 million in a single country.

### Lessons learned

Clear protocols and action plans at the country office level are essential for linking early warning to early action and for quantifying operational efficiency gains. Forecasting models are most effective when designed in reverse from the end user, ensuring the tool and models can be tested and validated in real operational contexts.

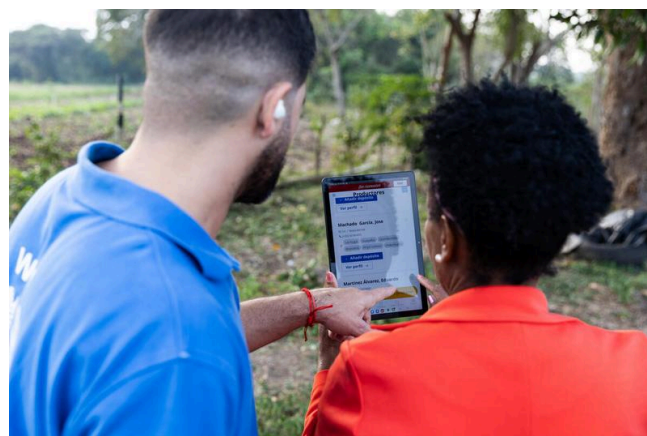
## Farm2Go

**Thematic area:** Food systems and smallholder farmers

**Cross-cutting themes:** Climate action, Gender

**Active in:** Cuba, Haiti, Nicaragua

**External innovation:** Internal



*Miriela Rodriguez Pequeño, local coordinator from the Ministry of Agriculture, and Miguel Valdés, WFP ICT assistant, demonstrating the use of the Farm2Go platform on a tablet. | Photo: WFP/Irshad Khan*

### Innovation overview

WFP’s Farm2Go aims to enhance agricultural productivity and increase the incomes of small-scale food producers by providing them with market access through a digital platform. This enables female farmers to anonymously list their produce in the digital marketplace, helping to mitigate the gender bias often encountered in traditional markets and ensuring they receive fair prices for their products. In addition, Farm2Go empowers cooperatives to effectively train their farmers to adopt resilient agricultural practices.

### What was the Accelerator’s role?

With support from the WFP Innovation Accelerator, Farm2Go launched in Latin America in Nicaragua, Cuba and Haiti. The team supported Farm2Go in improving their operating model and refining their scaling strategy.

### Results

In 2025, Farm2Go registered 313 smallholder farmers onto their platform via their farmer organizations. Each of these farmers now has digital market access, enabling them to produce and sell 61,153 kgs of produce. Farmers report that Farm2Go is easy to use and allows them to negotiate and sell products without needing to travel or accepting prices lower than feasible for them. They have formed new collaborations and secured funding for future pilots in 2026.

### Quote

“This platform is really great, I take it to heart. What I like most is that it offers the possibility of refusing a price that’s too low if the conditions are not right, and accepting it when it is right. It also allows you to negotiate when you are not satisfied with the proposed price.”  
 —ABAPR representative, Farmer Organisation (OPA) of Nippes, Haiti

### GEM/ADAM+

**Thematic area:** Emergency preparedness and response

**Cross-cutting themes:** Climate action

**Active in:** Afghanistan, Haiti, Pakistan, Philippines, Syria

**Internal / External innovation:** Internal



A member of staff stands in front of a building affected by an earthquake. | Photo: GEM Foundation

## Innovation overview

ADAM+ improves global earthquake risk and impact analysis. Partnering with the Global Earthquake Model Foundation (GEM), it integrates ground shake data for faster, more accurate insights within 72 hours. GEM's risk and impact assessments are key to ADAM+'s improved accuracy and efficiency. The solution supported in delivering risk assessments for Afghanistan, Syria, Pakistan, the Philippines and Haiti.

## Accelerator role

The WFP Innovation Accelerator supported the integration of GEM's data into ADAM+'s system, boosting the speed and accuracy of damage assessments for multiple hazards. It also provided coaching to customize the product for WFP's risk and impact analysis needs. Accelerator's role was also to support the design of protocol for data inputs and flow to be integrated within WFP damage assessment within 72 hours of a disaster.

## Results

GEM/ADAM+ improves efficiency in disaster preparedness and rapid post-disaster assessments. 520 million people across six target countries stand to benefit from enhanced readiness and timely impact evaluations.

## Quote

"Our collaboration with the GEM Foundation is strengthening earthquake preparedness and impact analysis. Their hazard models and vulnerability data enhance WFP's risk

assessments, aiding disaster planning.

Post-earthquake, GEM's data improves rapid impact analysis, enriching WFP's Earthquake Bulletin. In short, this collaboration boosts both preparedness and response."

—*Sirio Modungo, Food security programme, Natural hazards and impact assessment, WFP*

## Lessons learned

When large multiple data sets are being processed for damage assessment, having the right thresholds and triggers for early action is key to translate these insights into decision points and expand on real time value. Ground data collection varies widely between countries, requiring tailored strategies. Additionally, standardized risk assessment and impact analysis are essential for humanitarian and public responders to easily integrate open-source data into their planning.

## Read

[Investing in innovation to future-proof humanitarian response](#)

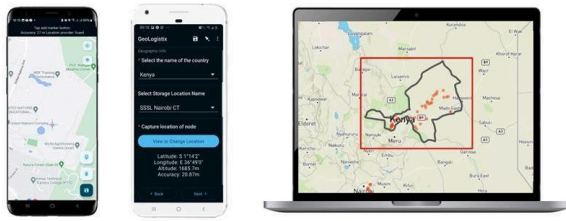
## Geologistix

**Thematic area:** Supply chain and delivery

**Cross-cutting themes:** N/A

**Active in:** Kenya, Malawi, Somalia, South Sudan, Syria and Uganda

**Internal / External innovation:** Internal



GeoLogistix in action. | Photo: WFP

## Innovation overview

GeoLogistix is a mobile app that works offline and enables field staff to collect accurate locations, photos and basic details for key sites using phones. It solves the challenge of missing or inaccurate coordinates that cause misdeliveries, rerouting and delays. The data flows into WFP systems, creating a single reliable map for planning, routing and monitoring. This enhances operational accuracy, transparency and efficiency, and ensures assistance reaches the right place at the right time.

## Accelerator role

The WFP Innovation Accelerator supported the Geologistix team to scale up their solution from pilot to implementation-ready, providing hands-on guidance across the key steps required for expansion. This included refining the rollout approach, aligning stakeholders, refining the operational model and mapping the path to sustainable adoption so the team could grow impact confidently, efficiently and at pace.

## Results

After a successful pilot in Isiolo, Kenya, where GeoLogistix showed it can work offline and

capture accurate locations, the tool is now being used in Malawi, Kenya, Uganda, South Sudan, Syria and Somalia. Staff and partners use the app to map suppliers, warehouses and delivery points, and the cleaned coordinates go straight into WFP's systems. This is already leading to better delivery plans, fewer wrong-drop mistakes and improved tracking in some of WFP's toughest operating environments.

## Quote

“Geologistix has made my long-held dream of a resolved final delivery point database achievable. What seemed like a complex tool turned out to be simple and intuitive - partners began submitting accurate data just days after training. With final delivery points as a key linkage between our [various WFP] systems such as PartnerConnect, COMET, LESS, SCOPE, WINGS, DOTs and beyond, Geologistix is unlocking automation, saving significant time previously lost to manual processes and redirecting our efforts to more impactful work.”

—Olimba Edward, Programme Assistant, Juba, South Sudan, WFP

## Annapurta - GrainATM

**Thematic area:** Supply chain and delivery

**Cross-cutting themes:** N/A

**Active in:** India

**Internal / External innovation:** Internal



*A woman filling bags with supplies at a GrainATM location. | Photo: WFP/Parvinder Singh.*

### **Innovation overview**

To ensure efficient and effective distribution of food grains at the last mile, WFP India has developed a GrainATM, also known as *Annapurta*, the Hindi word for fulfiller of food. This automated multi-commodity dispensing machine provides people with consistent access to their full food ration with speed and accuracy, once biometric authentication has taken place.

### **Accelerator role**

Accelerator has supported the scaling of Annapurta into Nepal to distribute grains to 3 million people in government social protection programmes. The team is also working on supporting validation of this

scaling model to then expand across South-South triangular cooperation countries.

### **Results**

2.45 million people have received their food rations through public distribution systems through registered IDs in India. Overall in 2025, Annapurta distributed 3,136 mt of cereals in India.

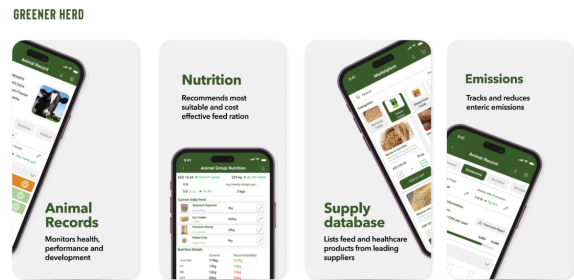
## Greener Herd

**Thematic area:** Food systems and smallholder farmers

**Cross-cutting themes:** Climate action

**Active in:** Lebanon

**Internal / External innovation:** External



*Greener Herd application. | Photo: Greener Herd*

### **Innovation overview**

Greener Herd's app supports livestock management, offering farmers an all-in-one platform to optimize cattle feed, monitor animal health and access a marketplace for essential supplies.

### **Accelerator role**

The WFP Innovation Accelerator and WFP Lebanon supported Greener Herd enabled the team to develop and validate a proof of

concept for its app dedicated to sustainable livestock management. The venture also conducted targeted user-segment testing with smallholder livestock farmers. In addition, WFP provided guidance to Greener Herd on how to integrate environmental and social standards into its operating model, solidifying its commitment to responsible and inclusive growth across the livestock sector.

### Results

Greener Herd has delivered training on sustainable livestock management and climate-smart practices to 348 smallholder livestock farmers in Lebanon. Through strong word-of-mouth and community engagement, the venture organically expanded its reach to more than 1,200 farmers, many of whom have since been onboarded onto the Greener Herd app. To enable these results, the team collaborated with 18 local organizations, further improving community engagement and adoption of more resilient and sustainable livestock practices.

### Lessons learned

Understanding user motivations, expectations and desires is key to ensure regular adoption and management. For the livestock producers using Greener Herd, for example, some who were engaging through NGOs were expecting all services to be included, and therefore it was important to explain the nature of the paid or subscription-based tools. The Greener Herd team also worked to motivate producers to ensure their consistent application use and data entry. Finally, when livestock producers

main concerns are feed costs, some adoption may not be possible until those challenges are addressed.

### Green Shovel

**Thematic area:** Food systems and smallholder farmers

**Cross-cutting themes:** Climate action

**Active in:** Iraq

**Internal / External innovation:** External



*Green shovel instruments installed in greenhouses in pilot with Sulaymaniyah farmers. | Photo: Green Shovel*

### Innovation overview

Green Shovel combines smart sensors with control systems to monitor soil moisture and fertilizer levels, integrating them with controllers and timers for optimized irrigation scheduling. This approach enhances energy efficiency and lowers electricity and fuel costs associated with water pump operation. In addition to technology deployment, Green

Shovel provides farmers with essential training to ensure effective use of these systems.

### Accelerator role

Through the PALM Iraq Innovation Programme, the WFP Innovation Accelerator supported Green Shovel with tailored coaching, rapid testing and farmer-centred validation. The team participated in a venture-coaching workshop and is now developing a scaling and sustainability roadmap with Accelerator guidance, supported by broader ecosystem and government engagement.

### Results

The pilot trained six smallholder farmers in the use of automatic irrigation systems, which were installed and supported through ongoing technical assistance. Through the partnership with Green Shovel, participating farmers reduced water consumption by 24 percent, lowered energy use by 19 percent, and increased crop yields by 10 percent. The initiative reached a total of 36 people, including farmers and their households.

### Read

[How WFP is supporting local innovators in making Iraq food-secure](#)

## Kitchen in a Box (KIAB)

**Thematic area:** School meals

**Cross-cutting themes:** Climate action

**Active in:** El Salvador

**Internal / External innovation:** Internal



*Students in the Tonacatepeque district in El Salvador receive nutritious school meals out of Kitchen in a Box, a smart kitchen adapted from a shipping container. | Photo: WFP/Giulio d'Adamo*

### Innovation overview

Kitchen in a Box builds smart kitchens for schools, helping children receive nutritious school meals. Using a holistic approach, it offers durable and low-cost infrastructure, equips kitchens with context-specific technology and storage, and builds community capacity for safe and hygienic food preparation and nutrition. Kitchen in a Box aims to promote access to safe infrastructure to prepare and deliver school meals and create better learning environments for children.

### Accelerator role

The WFP Innovation Accelerator has supported Kitchen in a Box through two sprints, the first of which launched three pilot kitchens in El Salvador. The second sprint integrated learnings and implemented four new kitchens to test new infrastructure models and equipment. In addition, the team created an implementation guide to share best practices with the ecosystem.

### Results

Kitchen in a Box has re-invigorated the school feeding programme by rolling out in seven schools, reaching 4,184 students. Kitchen in a Box ensures food is prepared in better conditions. The team also provided training for the school community to ensure the food is safer and more nutritious.

### Quote

“Now we have griddles, but electric ones. The food cooking time will be much faster because of the pressure cookers. The cooks have a different way of cooking food that will not take as long anymore. The school garden will diversify the children's nutrition by providing them with different vegetables.”

—Magalena Lemus, Director of Centro Escolar Altavista, El Salvador

### Lessons learned

One-size-fits-all approaches will not work when implementing innovative projects across diverse contexts and environments. For Kitchen in a Box, although the standardized

container model has clear advantages, it was not suitable for all contexts—particularly in hard-to-reach areas. This highlighted the need for more flexible, context-sensitive solutions to better match local conditions and enable broader implementation.

### Read

[From shipping containers to cooking spaces: Transforming school meals in El Salvador](#)

### Watch

[See how Kitchen in a Box is built \[VIDEO\]](#)

[Engineering the Future: Harnessing](#)

[Innovation for Sustainable Impact \[VIDEO\]](#)

### NoorNation

**Thematic area:** Food systems and smallholder farmers

**Cross-cutting themes:** Climate action

**Active in:** Egypt

**Internal / External innovation:** External



Field visit in Upper Egypt with local farmers. | Photo: Ragy Ramadan

### Innovation overview

Solar Irrigation as a Service (SlaaS) by NoorNation is an innovative model that replaces traditional flood irrigation with

modern, smart irrigation systems powered by the solar-driven unit LifeBox. This solution enables farmers to pay per use for the time of water pumped during the entire cultivation calendar. By eliminating the need for large upfront investments, SaaS offers a financially accessible and sustainable irrigation solution tailored to smallholder farmers' usage patterns.

### Accelerator role

With strong support from WFP Egypt, the WFP Innovation Accelerator enabled implementation in Northern Egypt, from early sensitization to market testing, by convening community stakeholders and connecting the team with interested smallholder farmers. The team built local capacity through targeted mentorship and convened an ecosystem event that connected NoorNation with national and regional stakeholders, fostering partnerships to support its growth and sustainability.

### Results

Through its targeted pilot programmes, SaaS by NoorNation validated the effectiveness and practicality of SaaS systems. As the pilot is still ongoing, the team projects it will contribute to a 90 percent reduction in diesel pump usage, resulting in a minimum 25 percent boost in agricultural productivity and a corresponding 10 percent increase in farmer profitability.

## OnlyPlants

**Thematic area:** Food systems and smallholder farmers

**Cross-cutting themes:** Climate action

**Active in:** Kenya

**Internal / External innovation:** External



*'Chui' Women Group members tasting Bambara nut milk during training in Laikipia, Kenya. | Photo: Marie-Louise Wiegert, OnlyPlants*

### Innovation overview

Bambara nut is a climate-resilient indigenous food crop that thrives in dry conditions and improves soil health. OnlyPlants mobilizes and trains smallholders to convert underutilized Bambara nuts into nutrient-dense plant milk and value-added products.

### Accelerator role

Through the Stability-and-Peace Accelerator, a programme supported by CGIAR, the WFP Innovation Accelerator supported OnlyPlants to mobilize and train female smallholder farmers in Laikipia, Kenya. With the programme support, OnlyPlants designed and implemented the Bambara nut trials, sourced Bambara germplasm with the technical support from the International Institute of Tropical Agriculture, onboarded farmers to the Orijin digital traceability system and validate a producer-as-consumer model to strengthen dry-season consumption and market linkages.

### Results

Farmer training, field trials and traceability testing confirmed Bambara's superior nutrition and storage benefits and the willingness of farmers to not only produce but consume Bambara nut value-added products such as Bambara milk during dry seasons. Digital onboarding and offtake arrangements improved market readiness and scaling potential.

### P-Vita

**Thematic area:** Food systems and smallholder farmers

**Cross-cutting themes:** Climate action

**Active in:** Egypt

**Internal / External innovation:** External



Comparison between treated and untreated plants. | Photo: Naglaa Mohamed

### Innovation overview

P-Vita converts palm waste and other organic waste into biofertilizers using sustainable, biotech-driven processes. By working with P-Vita, smallholder farmers can sell their waste and generate additional income, while improving soil health and increasing crop productivity with the usage of biofertilisers in rural Egypt.

### Accelerator role

Accelerator provides mentorship to P-Vita to guide its market expansion and impact evaluation. WFP Egypt facilitated connections to local farming communities, where P-Vita has provided samples of the fertilizers and conducted capacity building activities with farmer groups.

### Results

P-Vita has created new income-generating opportunities for 4,000 smallholder farmers through a local palm waste collection model

while diverting tons of agricultural palm waste from burning, dumping, and landfilling into high-value biofertilizer products. By promoting eco-friendly, natural inputs, the innovation has enabled a 30–50 percent increase in crop yields for key crops such as potatoes, wheat, corn and vegetables, while also reducing reliance on chemical fertilizers. Pilot users have reported a projected 20–30 percent improvement in soil fertility, contributing to healthier, more sustainable farming practices.

**Quote**

“The P-Vita initiative turns what was once waste into opportunity—improving lives and the land at the same time while also localizing production.”

—Mohamed Tarek, CEO, P-Vita

**Partners with Sun** 

**Thematic area:** Food systems and smallholder farmers

**Cross-cutting themes:** Climate action, Gender

**Active in:** Lebanon

**Internal / External innovation:** External



Solar/Hydrogen System. | Photo: Partners with Sun

**Innovation overview**

Partners with Sun provides an integrated solar–hydrogen power plant that combines multiple renewable energy sources into a coordinated system capable of providing both heat and power for bakery ovens. This innovation provides bakeries with affordable, clean energy, fostering long-term environmental and socioeconomic benefits.

**Accelerator role**

The WFP Innovation Accelerator and WFP Lebanon supported Partners with Sun by helping develop and validate a proof of concept for their solar-hydrogen solution. They also guided the venture on environmental and social standards and connected it with key local and regional partners, establishing its pathway to scale.

**Results**

Partners with Sun aims to implement their patented innovation with bakeries in Lebanon. For every ten ovens installed, the venture has the potential to provide affordable meals to 10,000 families daily, create 100 new jobs and prevent 200 tons of CO2 emissions.

**Lessons learned**

Providing financing options for customers is a transformative element of Partner with Sun’s business model. It not only reduces adoption barriers but also accelerates market uptake and strengthens long-term customer relationships.

## People Portal

**Thematic area:** Supply chain and delivery

**Cross-cutting themes:** N/A

**Active in:** Ecuador, Palestine, Sudan, Ukraine

**Internal / External innovation:** Internal



People using the People Portal platform in Gaza. | Photo: WFP/People Portal

### Innovation overview

People Portal is WFP’s self-registration platform that enables people in crisis areas to register for WFP assistance, update details and get real-time updates, improving speed, accuracy and data control while working in low-connectivity settings. By enabling people to register themselves directly, People Portal reduces reliance on costly, labour-intensive field processes and accelerates access to assistance. People can view and manage the data we hold about them, encouraging transparency and trust.

### Accelerator role

The WFP Innovation Accelerator helps scale People Portal by supporting innovative technologies and best practices to ensure

security, usability and crisis accessibility. It connects the platform with key partners for global expansion and validates impact on speed, data accuracy and user satisfaction, enabling continuous refinement and a scalable solution for vulnerable communities.

### Results

In Gaza, remote People Portal registration replaced queues and travel, enabling 2 million sign-ups and saving USD 9.4 million as costs fell from USD 12 to USD 0.50 per household. Now used in Palestine, Ukraine, Sudan and Ecuador, it speeds assistance in hard-to-access areas and could save USD 115 million annually at scale for vulnerable families in need.

“We had to evacuate so many times during the war. Each time meant that we would lose access to the food we collected or lose our belongings. I used to walk for miles and risk my life to find a place in the new area we moved in to register my family for assistance. After knowing about the self registration link and the help desk, I do not have to do that anymore. One of my girls who knows how to read and write filled the application for us to update our relocation information.”

—Umjameel-Nahla, People Portal user in Palestine

## Prisma

**Thematic area:** Supply chain and delivery

**Cross-cutting themes:** N/A

**Active in:** Global

**Internal / External innovation:** Internal



WFP team in the Central African Republic using Prisma. | Photo: WFP

### **Innovation overview**

Prisma is a supply chain control tower empowering WFP operations with key descriptive, predictive and prescriptive analytics to support upstream and downstream supply planning and forward-looking risk anticipation. Prisma improves the efficiency of operations by enabling faster and improved planning decisions and allowing timely action to avoid predictable operational issues. Prisma's modular system is designed as a solution that can be configurable and flexible to adapt to each WFP country's unique circumstances.

### **Accelerator role**

The WFP Innovation Accelerator advised Prisma on how to integrate and engage with WFP country offices to scale and improve their metrics tracking.

### **Results**

Prisma is currently used globally in 44 country offices. Based on formally confirmed submissions from 12 country offices across the globe, Prisma saved WFP USD 2.37 million in costs and 26,356 hours in 2025.

### **Quote**

"I would like to also extend a huge thank you from my side for the continued support the Accelerator is giving to our projects. This is extremely appreciated, and it has been fundamental to bring them forward, making them as powerful as they are today - and even more in the future."

—*Claudio Delicato, PRISMA supply chain officer, WFP*

"Prisma has helped us reduce our workload by 60 percent, where we used to spend a lot of time crunching numbers, working on excel sheets, assembling data and trying to make projections and it has also massively helped to coordinate better with programme and BPU teams with verified data from various WFP platforms."

—*Arif Ali, Supply Chain Officer, WFP Pakistan*

## Predictive Displacement for Anticipatory Action

**Thematic area:** Emergency preparedness and response

**Cross-cutting themes:** N/A

**Active in:** Democratic Republic of the Congo, Ethiopia, Sudan

**Internal / External innovation:** External

**Innovation overview**

With global displacement and humanitarian needs rising, PREDICT leverages machine learning to forecast displacement 3-4 months in advance. Using open-source data on conflict, health, environment, food insecurity and income, the Anticipatory Humanitarian Action for Displacement (AHEAD) model developed by PREDICT helps WFP anticipate crises and take early action.

**Accelerator role**

The Accelerator has supported PREDICT in developing action oriented insights for decision makers. Along with the conflict sensitivity team these models and insights are being integrated into a multi model early action tool for countries like Somalia. The AHEAD dashboard and model is also being used by several other UN agencies as well as being scaled for countries beyond this pilot as a global model.

**Results**

PREDICT improves displacement early warning, further enhancing WFP’s ability to detect future humanitarian needs and food insecurity. The team has published AHEAD PREDICT Dashboard which showcases displacement trends within a 3-month forecasting window. The data is now

integrated into WFP to support programme planning.

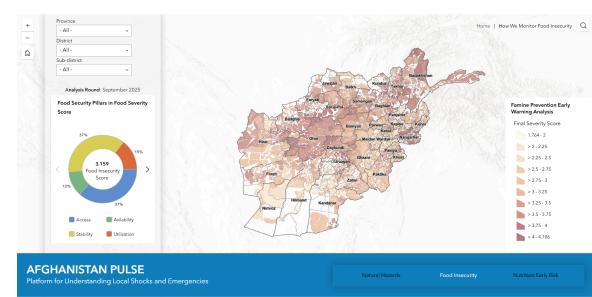
**AF - PULSE** 

**Thematic area:** Emergency preparedness and response

**Cross-cutting themes:** N/A

**Active in:** Afghanistan

**Internal / External innovation:** Internal



AF-PULSE dashboard. | Photo: WFP

**Innovation overview**

Afghanistan faces overlapping extreme weather hazards and worsening food-nutrition crises, but early warning data are fragmented and imprecise. AF-PULSE unifies climate, food security, nutrition and market signals into one platform, generating localized alerts, hotspot maps and impact assessments. Integrated with community data and WFP systems, it improves coordination, precision and early response for at-risk communities.

**Accelerator role**

The WFP Innovation Accelerator provided technical mentors from Netlight and supported UI, UX and ArcGIS needs. It is also helping develop a long-term scaling roadmap

and collaborate with partners such as the Taylor Geospatial Institute. Ongoing support will include product launch and outreach support to build a sustainable pathway for development and long-term use cases.

## Results

AF-PULSE is still being developed, integrating WFP Afghanistan's three early warning systems into one platform. However, its core famine early warning analysis, already operational and forming the backbone of the system, has directly shaped hotspot targeting. In the last quarter of 2025 alone, this analysis guided assistance to more than 2 million people in the most food insecure districts. By identifying where conditions were deteriorating fastest and enabling earlier, more precise action, it has helped prioritize limited resources, reach communities sooner and reduce the risk of severe hunger and malnutrition escalating into famine-like conditions.

## Rapid Rural Transformation

**Thematic area:** Resilience and sustainable livelihoods

**Cross-cutting themes:** N/A

**Active in:** Madagascar

**Internal / External innovation:** Internal



*Setting up of a greenhouse in Vohitsova, Madagascar, by Rapid Rural Transformation. | Photo: WFP*

## Innovation overview

The WFP Rapid Rural Transformation hub in Vohitsova, Madagascar, tackles high unemployment among specific demographic groups with limited access to economic activities, in particular youth and women. The innovation achieves this by providing multi-pronged support, integrating food systems, water and energy access through the supply of food processing equipment and training, as well as irrigation and solar power facilities to drive economic growth.

## Accelerator role

The WFP Innovation Accelerator provided USD 100,000 in funding for the implementation of the solution and helped define a clear roadmap with performance indicators to measure results.

## Results

Rapid Rural Transformation directly reached 1,352 unique individuals through the provision of goods and services under the Rapid Rural Transformation innovation in Vohitsova. This includes: 42 climate-smart farmers, 122 livestock breeders, and 34 local committee members who received direct

training, inputs and access to productive infrastructure such as the greenhouse and the future cheese unit. The 1,352 individuals living in Vohitsova benefit directly from access to electricity and clean water services provided through the Rapid Rural Transformation solar hub. Another 2,000 individuals living outside of Vohitsova also access the services and market-related activities on occasion.

**Quote**

“The Rapid Rural Transformation initiative is a game-changer. The integrated services approach helps to stimulate grassroots development, while addressing rural communities’ most pressing needs.”  
 —Pasqualina di Sirio, Country Director, WFP Madagascar

**Rebug2Debug**

**Thematic area:** Food systems and smallholder farmers

**Cross-cutting themes:** Climate action

**Active in:** Rwanda

**Internal / External innovation:** External



*Rebug2Debug sets up a demonstration plot to show farmers how their organic fertilizer works. | Photo: Rebug2Debug*

**Innovation overview**

Rebug2Debug addresses food waste and insecurity by utilizing Black Soldier Fly Larvae to process organic waste into organic fertilizer. This circular solution enhances smallholder farmers' productivity in Rwanda by providing affordable fertilizer, tackling both food insecurity and waste. Thanks to the support of the WFP Innovation Accelerator and WFP Rwanda, Rebug2Debug has collaborated with many agribusiness actors to create sustainable, cost-effective solutions for farmers while improving local food systems.

**Accelerator role**

The WFP Innovation Accelerator supported Rebug2Debug with grant financing, project management support and connections, especially through WFP Rwanda. This was crucial in testing the feasibility of their solution in Rwanda. Participating in the WFP Innovation Accelerator’s sprint programme has opened new market opportunities for the team as they continue scaling up their operations.

**Results**

Utilizing insect technology, Rebug2Debug’s process of transforming coffee pulp and organic waste into fertilizer is five times faster than conventional composting methods. Further, farmers using Rebug2Debug’s fertilizer increased their yield by 10 percent on average while the production process of

the fertilizer prevented the emission of two metric tons of CO2 equivalent per ton of fertilizer produced, contributing to a substantial reduction in greenhouse gas emissions.

### Quote

"The fertilizer works so well in vegetables and bananas. For my case, I am intercropping bananas and collard greens. I also apply the fertilizer during the dry season because I have a water source, a borehole, and this gives me confidence because the fertilizer helps the soil to hold water during these dry days."

—Ofumbi Edith, a farmer who grows bananas and collard greens in Nakasseke District, Uganda

### [Remer](#)

**Thematic area:** Food systems and smallholder farmers

**Cross-cutting themes:** N/A

**Active in:** Lebanon

**Internal / External innovation:** External



A farmer from Lebanon receiving the Remer growth bio-fertilizer. | Photo: Remer

### Innovation overview

Remer's bio-fertilizer Growth improves nutrient availability and stimulates root development, resulting in healthier plants with greater resistance to environmental stresses.

### Accelerator role

The WFP Innovation Accelerator and WFP Lebanon supported Remer throughout its acceleration journey by helping the venture integrate environmental and social standards into its operating model. In addition, WFP facilitated key connections across the local and regional ecosystem. As a result, Remer and the Ministry of Agriculture in Lebanon signed a Memorandum of Understanding to expand their awareness sessions and promote farmer resilience and sustainable

agricultural practices for smallholder farmers across the country.

### Results

Remer has implemented its initiative in North Lebanon, providing 1,698 smallholder farmers with training and access to the Growth biofertilizer. Through collaboration with the Lebanese Ministry of Agriculture, the team delivered targeted awareness sessions to support farmers in adopting more sustainable agricultural practices.

### Lessons learned

Strategic outreach is a powerful driver of both policy change and farmer adoption. After participating in the sessions, all farmers who used Growth reported satisfaction with the results. Many of them placed follow-up orders, demonstrating strong early trust and demand.

### [Rescue Card](#)

**Thematic area:** Supply chain and delivery

**Cross-cutting themes:** N/A

**Active in:** Barbados, Bolivia, Colombia, Cuba, Dominican Republic, Guatemala, Haiti, Panama and Peru

**Internal / External innovation:** Internal



Adriana Nohemí López Orozco, programme assistant at WFP Guatemala. | Photo: WFP/ChapinFilms

### Innovation overview

Rescue Card is a fast-acting, prepaid card linked to WFP's corporate digital wallet that delivers cash assistance within 72 hours to vulnerable communities in disaster-hit areas. In 2025, it was pivotal in Guatemala's emergency response, enabling thousands, including returning migrants without formal ID, to access food and essentials after floods and droughts disrupted banking systems. Once delivered, cards can be activated in minutes.

### Accelerator role

The WFP Innovation Accelerator supported the Rescue Card team to scale and be ready for global deployment. The team provided guidance on programme design, helped

structure an implementable model across contexts, and connected the dots between key stakeholders, processes and enabling partners so the solution can scale faster, integrate smoothly and deliver consistently at a country level.

### Results

In terms of time savings, WFP country offices saved up to 24 months in delivering cash assistance. Rescue Card also achieved an average of 70 percent operational cost savings within the first three months of an emergency operation. In 2025, Rescue Card reached over 100,000 people across nine countries, helping 10,000 households meet their essential needs, and saved WFP USD 700,000.

### Quote

"In Guatemala, WFP's Rescue Card has enabled the country office to promote financial inclusion and access to financial services so families can manage their own finances without the risk of carrying large amounts of cash. In the end, our mission is to rapidly and effectively provide assistance to all families, regardless of if they have a formal ID, access to banks or even if they are in transition from one place to another during emergencies."

—Adriana Nohemí López Orozco, programme assistant, WFP Guatemala

## [Responsive Drip Irrigation](#)

**Programme:** Adaptation Fund Climate Innovation Accelerator

**Thematic area:** Food systems and smallholder farmers

**Cross-cutting themes:** Climate action

**Active in:** Jordan

**Internal / External innovation:** External



Cucumber Greenhouse in Jordan. | Photo: Responsive Drip Irrigation/Kamal Rasool

### Innovation overview

Responsive Drip Irrigation (RDI)'s nature-driven irrigation system responds to plant root signals, delivering water efficiently without electricity or automation. It benefits farmers in arid regions and fragile communities by doubling yields while reducing water, fertilizer, and labor use, enabling sustainable agriculture on degraded lands.

### Accelerator role

The WFP Innovation Accelerator supported RDI by convening national stakeholders such as the National Agricultural Research Centre, Ministry of Water and Agriculture and the Jordan University of Science & Technology. The team helped select pilot areas and

conduct surveys to inform deployment and facilitated introductions to farmer groups and cooperatives for implementation of RDI systems in greenhouses, orchards and open fields. To validate performance and inform scale up, the Accelerator also assisted in feedback collection and performance analysis. It also upskilled the team through targeted workshops and mentor support, and hosted an investor roundtable to connect RDI with venture capital for potential future funding to scale their work in Jordan.

### Results

In Jordan, 67 smallholder farmers implemented RDI's systems on their farms, reaching 321 farmers when household multipliers are applied. These farmers cut up to 60 percent of their water use thanks to RDI, which can boost yield, restore soil health and enhance carbon sequestration, helping restore land productivity. RDI has been implemented in more than 22 countries, supporting farming and reforestation in harsh, water-scarce and post-conflict environments.

### Quote

"The RDI irrigation system has helped me achieve remarkable water savings and a clear increase in production. I am now in the final stages of harvesting, and the results have been very positive and encouraging. I definitely plan to continue using the system."  
—Cucumber farmer using RDI, Jordan

## [Route the Meals](#)

**Thematic area:** Supply chain and delivery

**Cross-cutting themes:** N/A

**Active in:** Benin, Burundi, Chad, Colombia, El Salvador, Ethiopia, Haiti, Pakistan, Uganda, Venezuela

**Internal / External innovation:** Internal



*Route the Meals optimizes supply chain choices, helping deliver food assistance such as school meals across several WFP operations. | Photo: WFP/Florian Grenouilleau.*

### Innovation overview

Route The Meals enhances WFP's logistics by optimizing food delivery efficiency. Using advanced algorithms, Route The Meals provides insights on where to establish new warehouses and hubs, how to optimally plan dispatches and which last-mile routes to take. This ensures quick and reliable food assistance, whether it is for school meals, nutrition programmes or general distribution. It also supports local governments and partners with technical assistance, enhancing WFP and other stakeholders' ability to deliver food efficiently, sustainably and at scale.

### Accelerator role

The WFP Innovation Accelerator provided Route the Meals with essential support to develop their business model and access technical mentorship to refine their tool. Additionally, the WFP Innovation Accelerator guided the team on scaling their solution and

helped them create a product requirement roadmap tailored to their scalability needs.

### Results

As of January 2026, Route The Meals has saved WFP USD 3.1 million in cost efficiencies to date across 10 countries by optimizing routing and transport planning to cut unnecessary trips and improve fleet utilization.

### Quote

“In a time of constrained resources, Route the Meals has played a pivotal role in optimizing our supply chain, leading to significant cost efficiencies and reduced emissions. A key feature of Route the Meals is its comprehensive approach, which integrates procurement, logistics and programmatic aspects of the operation to deliver the most effective solution for all teams.”

—Salvador Peña, Head of Supply Chain, WFP Venezuela

## School Connect

**Thematic area:** School meals

**Cross-cutting themes:** Gender

**Active in:** 26 countries

**Internal / External innovation:** Internal



A young girl eats a school meal in her underground school in Zaporizhia, Ukraine, converted from a bunker to keep children safe at school during the war in Ukraine. | Photo: WFP/Sayed Asif Mahmud.

### Innovation overview

School Connect helps school employees or other users manage and monitor school feeding programmes. It allows school-level users to record food deliveries, stock issues, attendance and meal consumption in real-time. Developed by WFP alongside local offices and governments, School Connect streamlines data collection and syncs it to a centralized dashboard, where it can be used to generate monthly reports or other insights. School Connect reduces reporting time and improves decision-making, showcasing how WFP can enhance accountability and the results of school feeding investments.

### Accelerator role

The WFP Innovation Accelerator provided diverse feedback on the new School Connect application and rollout strategy, facilitated linkages with stakeholders and offered expertise on user experience solutions and

sustainable financing pathways. It also helped explore potential synergies with other WFP applications and alignment opportunities for a shared project timeline.

**Results**

Since its launch, School Connect has scaled to more than 11,000 schools in 26 countries, tracking over 350 million meals for 3.6 million children. School Connect has saved WFP USD 3.6 million in two years, USD 2 million of those occurring just in 2025 by digitizing manual school monitoring processes.

**Quote**

“The innovation and more specifically your contribution has been instrumental in driving innovation in our teams. Participating in this effort allows School Connect to stay in a performance evaluation approach. It favors streamlining and product refinement that parallels market efficiency driven by KPIs and ROI.”

—Hugo Marchand, School Connect

**Lessons learned**

Establishing a dedicated rollout manager position, responsible for aligning with new potential country and school implementers, developing a rollout plan and supporting them through the process, has critically elevated School Connect’s success in scaling and positive results after implementation.

**Read**

[School Connect’s scaling journey to 10,000 schools](#)

[What WFP’s latest exhibition reveals about the future of humanitarian assistance](#)

**SCOUT** 

**Thematic area:** Supply chain and delivery

**Cross-cutting themes:** N/A

**Active in:** Western and Central Africa Regional Office, Eastern and Southern Africa Regional Office

**Internal / External innovation:** Internal



Sedric Zamedjo, supply chain planning officer at WFP for Western and Central Africa. Photo: WFP

**Innovation overview**

SCOUT is an artificial intelligence tool that optimizes supply chain planning. It helps WFP make informed decisions about where best to buy food, where to send it, where to store it and how to deliver the food needed on time. By precisely timing purchases and choosing optimal storage locations, SCOUT helped replan the corporate inventory supply chain.

**Accelerator role**

The WFP Innovation Accelerator supported SCOUT to move from an early-stage innovation to a scalable solution. Through

project management support and mentorship the team was able to validate their solution, conduct testing and develop a robust minimum viable product.

### Results

In 2025, SCOUT saved USD 4.2 million, bringing total cost savings to USD 6.2 million since the innovation began in March 2023. Its artificial intelligence forecasting engine cuts planning costs by 10 percent. As it scales, SCOUT is projected to save over USD 25 million annually. SCOUT reduces lead time for supply chain emergency planning to one day instead of two weeks.

### Quote

“The return on investment on SCOUT has been impressive so far, and we are looking forward for these efficiencies to further grow in the future. All of this wouldn't have been possible without the continued support that the WFP Innovation Accelerator has given to this project.”

—*Claudio Delicato, SCOUT supply chain officer, WFP*

### Lessons learned

Implementing technology and optimization AI can significantly enhance cost efficiency and streamline operations, leading to substantial improvements in overall performance.

### [SoilPro 2.0](#)

**Thematic area:** Resilience and sustainable livelihoods

**Cross-cutting themes:** Climate action

**Active in:** Kenya, Uganda, South Sudan

**Internal / External innovation:** External



*SoilPro helps gather data on vegetation, soil, land use and degradation processes in Samburu and Wajir, Kenya. | Photo: WFP/Isaac Onyango*

### Innovation overview

SoilPro 2.0 develops and integrates innovative environmental monitoring in the Asset Impact Monitoring System from Space (AIMs) by using satellite imagery, peer-reviewed models and machine learning-based validation.

### Accelerator role

The WFP Eastern and Southern Africa Regional Office (ESARO) together with the WFP Innovation Accelerator guided the SoilPro 2.0 team through comprehensive project scoping to refine priorities and shape a clear implementation pathway. SoilPro 2.0 also benefited from improved coordination among

team members and key stakeholders, helping align roles, expectations and collaboration for smoother execution. In addition, WFP amplified SoilPro 2.0's visibility and advocacy efforts, enabling the initiative to engage more effectively with partners and position itself within the broader ecosystem.

## Results

The project is being implemented in Kenya and Uganda and is structured around three primary objectives: (1) advancing the technical assessment of soil organic carbon and associated environmental indicators; (2) developing a comprehensive guidance framework to evaluate the suitability of projects and programmes for resource mobilization through carbon markets; and (3) enhancing the capacity of WFP staff in field data collection and the operational application of soil organic carbon monitoring methodologies. The consolidated results from these workstreams are expected to be collected and reported in 2026.

## Sustainable Cooking

**Thematic area:** Resilience and sustainable livelihoods

**Cross-cutting themes:** Climate action, gender

**Active in:** Democratic Republic of the Congo and South Sudan

**Internal / External innovation:** Internal



*Bakita (29) plucks water hyacinth to make briquettes as part of a WFP project in Unity State, South Sudan. | Photo: WFP/ Samantha Reinders*

## Innovation overview

The Sustainable Cooking project implements a user-centered approach to empower communities to be self-sufficient and resourceful in conflict affected settings. The innovative model creates and promotes alternative cooking systems for communities and with communities. It also builds capacity in the production, usage and market of new energy sources ensuring sustainable access to fuel for cooking and income, which is a critical challenge in the daily lives of women, both displaced and host communities.

## Accelerator role

The WFP Innovation Accelerator guided the Sustainable Cooking initiative through comprehensive project scoping and helping them refine a clear, context-appropriate implementation pathway. The venture also developed and tested a proof of concept adapted to local needs, ensuring the model was both feasible and context relevant.

## Results

WFP South Sudan continues to implement the Sustainable Cooking initiative as part of the Asset Creation and Livelihoods Programme in one of the country's most food-insecure counties, benefiting more than 2,500 households in 2025 through the production of water hyacinth briquettes and stoves. These affordable, safer alternatives to firewood also provide income opportunities and reduce protection risks for women. The initiative was replicated in the Democratic Republic of Congo to test a community-led proof of concept, reaching more than 750 households that produced and used agricultural-waste briquettes and heat-retention bags. Evidence gathered by the local team shows strong potential for environmental benefits, such as reduced reliance on firewood and charcoal, improved safety and reduced time burden for women, and enhanced community resilience through a viable income-generating activity.

## Quote

“As a member of the Kingarame Steering Committee, I participated in the training on briquette production. I am very satisfied with the way it was delivered, the module was adapted and taught in the local language. As a committee member, I feel it is my duty to train other women. For me, and for many of us, it was the very first time we saw and learned techniques to produce organic briquettes from agricultural residues.”  
—*Josephine Sebyemana, a Sustainable Cooking user in Kinagarambe, Rwanda*

## Lessons learned

Innovation can flourish under resource constraints. With limited equipment, beneficiaries adapted creatively—such as using simple, locally available materials to replace specialized tools. This flexibility revealed both the resilience of participants and the importance of designing low-cost, adaptable technologies. Emphasizing that training should encourage practical improvisation and that simple solutions can deliver meaningful impact.

## Takachar

**Thematic area:** Food systems and smallholder farmers

**Cross-cutting themes:** Climate action

**Active in:** Iraq, India (also operational in: Kenya, USA)

**Internal / External innovation:** External

## Innovation overview

Takachar has developed a portable machine that addresses the affordability of fertilizers and post-harvest crop residue burning, which causes air pollution and resource loss. The innovation processes these residues locally into biochar that is then mixed with nutrients or regular fertilizers. This innovation can increase farmers' yields on average by up to 30 percent, increase their net income by up to 50 percent while sequestering carbon emissions at a gigatonne level at scale, and hence reducing harmful air pollution. Takachar's innovation has won a variety of recognition, including Prince William's Earthshot Prize and the XPRIZE Carbon

Removal competition funded by Elon Musk and the Musk Foundation.

### Accelerator role

Upon the procurement of one of Takachar's bioreactors by WFP Iraq, the WFP Innovation Accelerator has supported Takachar's first expansion in the Middle East to test the production of biochar from olive pits, an underused biomass in Iraq. The WFP Innovation Accelerator assisted the team in defining their implementation roadmap, a sustainable operating model and scaling pathways.

### Results

As part of the commissioning of Takachar's bioreactor in Bashiqa, Iraq, the capacity of the Directorate of Agriculture was strengthened before initiating the production of biochar. The biochar is being distributed to smallholder farmers after the completion of initial lab tests by the University of Mosul as a first step towards biochar certification for nationwide adoption.

## Toothpick

**Thematic area:** Food systems and smallholder farmers

**Cross-cutting themes:** Gender

**Active in:** Kenya, Tanzania and Uganda

**Internal / External innovation:** External



*On the left, a farm affected by Striga with 100 percent crop loss. On the right, the same farm one year post-treatment with Kichawi Kill in Kenya. | Photo: Toothpick/Dorcas Kemboi*

### Innovation overview

Toothpick's Kichawi Kill is a bio-herbicide offering a safe, effective and environmentally friendly alternative to chemicals for controlling Striga, a parasitic weed that devastates crops across Sub-Saharan Africa. Targeting Striga's biology, the product reduces off-target impacts, supports soil health and fits smallholder agronomy. With Striga affecting 40 million farms and undermining food security, Kichawi Kill combines field validation, farmer engagement and scalable distribution to demonstrate efficacy and adoption pathways. Positioned to disrupt the herbicide market, the innovation aims for rapid piloting, regulatory approval and scale through partnerships with research institutions, extension services and private distributors.

### Accelerator role

In Kenya, we supported scaling of Toothpick's local manufacturing by enabling purchase of a fermenter to boost production capacity and efficiency, and helped establish 42 learning centres on Striga-infested farms to raise awareness and train farmers in treatment practices. We also supported testing lower pricing models to increase affordability across

six counties in Western Kenya and facilitated regional expansion into Uganda and Tanzania by helping convene national stakeholders, WFP country offices and research institutions to enable field trials and regulatory pathways.

**Results**

Toothpick’s solution reached 43,656 farmers and their households, reaching 218,280 individuals total in Kenya. Trials recorded a 60 percent yield increase. The product has secured full regulatory approval in Uganda and has begun field trials in Tanzania, positioning it for commercial rollout and regional scale-up.

**Quote**

“Where there is victory, there is history. Developed over decades of lab research, field trials and relationships with stakeholders, Kichawi Kill has a rich history. We are grateful to our farmers for their belief in our product. The future is fungi, and we are humbled to be at the helm of such a transformative agritech movement.”

—*Dorcas Kemboi, General Manager, Toothpick*

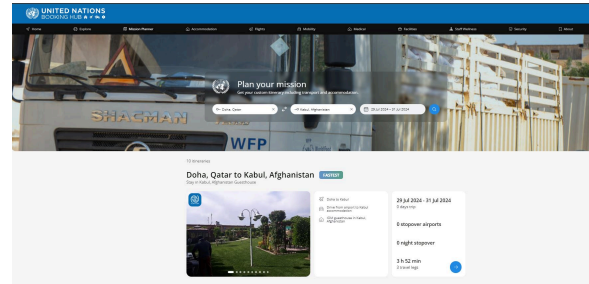
**UN AI Smart Mission Planner** 

**Thematic area:** Workplace Management

**Cross-cutting themes:** Climate action

**Active in:** Global

**Internal / External innovation:** Internal



Screenshot of the UN Booking Hub. | Photo: WFP

**Innovation overview**

The UN AI Smart Mission Planner tackles the challenge of optimizing mission planning for humanitarians by providing real-time, eco-friendly travel options, including flights, accommodation and mobility services. Embedded in the UN Booking Hub, a worldwide resource that acts as a single platform to streamline critical travel and lodging services, including guesthouses, UN aircraft and UN soft and armed vehicles for multiple UN agencies, it features a recommender system that helps service managers allocate resources efficiently based on travel requests. This innovation improves operational efficiency, enhances sustainability and ensures fast, easy and green solutions for humanitarian efforts.

**What was the Accelerator’s role?**

The WFP Innovation Accelerator provided financial support of USD 200,000, connected the team with a Google mentor for AI implementation, assisted in defining the solution’s roadmap and key performance indicators and empowered the team in their technical AI development through the AI Sandbox. This support helped the team develop an AI model that optimizes mission

itineraries and resource utilization on the UN Booking Hub.

**Results**

By streamlining mission planning through real-time, AI-driven recommendations, the UN AI Smart Mission Planner significantly reduces the time and resources spent by users and facilities managers. This translates into both operational and cost savings across humanitarian missions. The platform is expanding to reach an ambitious target of 2.5 million UN Hub passengers per year, further bolstering efficient and eco-friendly travel solutions that could potentially result in USD 9 million in cost savings in support of global humanitarian efforts.

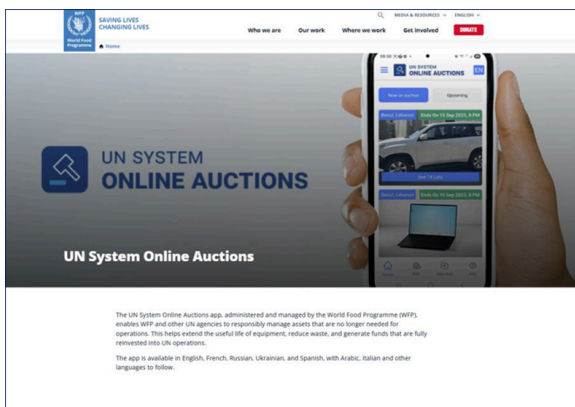
**UN System Online Auctions**

**Thematic area:** Workplace Management

**Cross-cutting themes:** N/A

**Active in:** Global

**Internal / External innovation:** Internal



The UN System Online Auctions website. | Photo: WFP

**Innovation overview**

UN System Online Auctions is a WFP-run, UN Secretariat-endorsed Global Shared Service that digitizes asset disposal across the UN system. It enables transparent online auctions, increases competition, enhances value recovery and reduces waste and operational burden, while remaining fully aligned with UN Reform and the Global Shared Services agenda. The platform offers a safer, faster, more sustainable and more cost-effective alternative to traditional offline and outsourced methods.

**Accelerator role**

The WFP Innovation Accelerator is providing strategic advisory to transform UN System Online Auctions into a sustainable, scalable global shared service, focusing on defining optimal service models, capacity structures and digital product governance. Support includes offering an external perspective to transition from reactive, ad-hoc operations to a deliberate scaling strategy, while collaborating to define project deliverables and KPIs to track progress.

**Results**

To date, the solution has generated USD 46 million in 18 WFP country offices with efficiency gains of over 20 percent, translating into cost savings and additional revenues of over USD 9 million for WFP. In 2025 alone, UN System Online Auctions generated over USD 650,000 for WFP.

**Quote**

“Our recent online auction in Venezuela

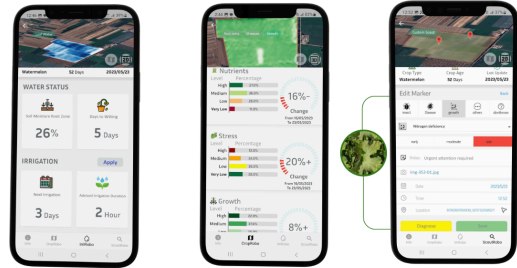
Country Office, featuring a significant number of light vehicles plus IT equipment, truly highlighted the power of embracing digital solutions for asset management. The process was not only fast and secure, it was also transparent and highly competitive, attracting ample participation and delivering solid financial results. This experience sets a new standard for efficiency and demonstrates how innovation can create real value at field level.”  
 —Rodriguez Andres, Country Director ad interim, WFP Venezuela

**Lessons learned**

A unified, multi-agency approach to asset disposal can unlock far greater value than isolated country-level efforts. Digital-first auction models improve transparency and efficiency, while early pilots remain essential for building institutional confidence. High-value assets such as vehicles and IT equipment continue to demonstrate the strongest return potential, confirming that innovative disposal mechanisms can create meaningful operational and financial gains across the UN system.

**Visual Artificial Intelligence Solutions** 

**Thematic area:** Food systems and smallholder farmers  
**Cross-cutting themes:** Climate action  
**Active in:** Egypt  
**Internal / External innovation:** External



Application screenshot. | Photo: FarmGuru

**Innovation overview**

Visual Artificial Intelligence Solutions (VAIS) is an AI-powered platform for precision agriculture, offering smart irrigation and crop management without sensors. It delivers weather insights, early warnings and disease detection to help farmers worldwide adapt to climate change.

**Accelerator role**

The WFP Innovation Accelerator is supporting the development of FarmGuru, a VAIS product designed for smallholder farmers. This support includes building an AI companion to guide farmers in making timely, informed decisions. Additionally, the Accelerator is helping VAIS deepen its understanding of smallholder farmers and forge partnerships with organizations that have strong access to and trust within farming communities, to drive market expansion and growth.

**Results**

During their sprint with the WFP Innovation Accelerator, VAIS will adapt FarmGuru for smallholder farmers to deliver insights that boost yields, cut input costs and support sustainability. It is targeting a 15–25 percent reduction in weather-related crop losses,

10–20 percent in disease losses and a 20–30 percent increase in climate-smart awareness.

## VAM-LLM

**Thematic area:** Emergency preparedness and response

**Cross-cutting themes:** N/A

**Active in:** In development

**Internal / External innovation:** Internal



WFP staff Deborah Suc in Guatemala. | Photo: WFP/Nelson Pacheco

### Innovation overview

The Vulnerability Analysis and Mapping Large Language Model (VAM-LLM) is an AI-powered tool that accelerates data analysis and report writing by extracting insights from documents and news sources, integrating structured datasets, and generating clear, actionable food-security reports. It enables WFP country offices and VAM staff to significantly reduce the time spent reviewing documents, integrating structured data and drafting analytical outputs, allowing them to focus on interpreting results and supporting decision-making.

### Accelerator role

The WFP Innovation Accelerator supported the project by providing essential in-kind technical expertise and product management, supporting up the minimum viable product development, and offering specialized mentoring, specially on LLMs and AI agent workflows.

### Results

VAM LLM is expected to demonstrate meaningful field impact by reducing the time analysts spend processing information and drafting reports, contributing toward the objective of reducing overall VAM analysis time by 50 percent and enabling staff to redirect effort toward strategic decision-making.

## Zhany

**Thematic area:** Food systems and smallholder farmers

**Cross-cutting themes:** Climate action

**Active in:** Iraq

**Internal / External innovation:** External



Zhany team training farmers in Iraq. | Photo: Zhany

### Innovation overview

Zhany converts organic waste into vermicompost and Vermitea, a type of compost based on worms. This is done using a continuous flow-through technology with integrated sensors to optimize production efficiency and ensure consistent quality. This process transforms waste into a highly nutrient-rich compost that improves soil structure, aeration, and water retention. This benefits people by increasing crop yields, reducing the need for chemical fertilizers, helping plants tolerate saline soils and supporting farmers in adopting sustainable practices.

### Accelerator role

Through the PALM Iraq Innovation Programme, the WFP Innovation Accelerator supported Zhany with tailored coaching, rapid testing and farmer-centred validation. The team participated in a venture-coaching workshop and is now developing a scaling and sustainability roadmap with Accelerator guidance, supported by broader ecosystem and government engagement.

### Results

Zhany successfully engaged 50 farmers and reached 300 indirect beneficiaries through its innovation.

### Quote

“The WFP Innovation Accelerator provided our team with a valuable opportunity to develop and implement a comprehensive Market Penetration Plan through both technical and

financial support. This program enabled us to engage directly with farmers, understand their needs through training and dialogue, and design a strategy to strengthen and sustain our relationships with them.”

—Handren Salih Mohammed Amin Jaf, General Manager, Zhany

### Read

[How WFP is supporting local innovators in making Iraq food-secure](#)

## Alumni

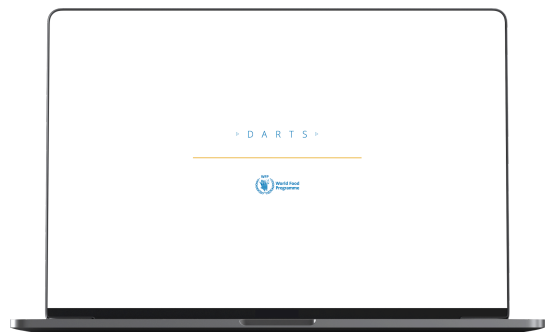
### DARTS

**Thematic area:** Supply chain and delivery

**Cross-cutting themes:** N/A

**Active in:** Benin, Chad, Ethiopia, Gambia; The Guinea-Bissau, Haiti, Iran; Islamic Rep., Kenya, Mauritania, Myanmar, Peru, Senegal, Türkiye and Yemen

**Internal / External:** Internal



The DARTs platform helps verify the delivery of cash-based assistance. | Photo: WFP

### Innovation overview

When a person receives cash-based assistance from WFP, Data Assurance and Reconciliation Tool Simplified (DARTs) makes it easy to verify they received the right assistance at the right time. By standardizing and automating complex data analysis and transformations, DARTs enables WFP to implement controls on large cash transfer data, which is vital for WFP to guarantee accountability to its donors, increase programme efficiency and build trust across operations. Its advanced machine learning model ensures accurate, accountable cash transfer data and reconciliation.

### What was the Accelerator's role?

The WFP Innovation Accelerator helped the DARTs team transform their innovation into a full-fledged corporate solution by providing hands-on project management, scalability support and business model guidance. It also connected them to mentors to support user interface design, technology and mission and vision development.

### Results

In 2025, DARTs generated USD 1.1 million in cost efficiencies and ensured that 1.2 million people received the right amount of money at the right time, accurately and efficiently.

DARTs continues to be actively used across multiple WFP country offices. Benin, Kenya, Senegal and Gambia regularly apply DARTs for reconciliation across cash-based transfer activities. Myanmar relies heavily on the tool, reconciling cash reports from more than 20

cooperating partners per distribution cycle and consistently highlighting its simplicity and results. Iran has resumed full use across all activities, while Ethiopia and Guinea-Bissau have recently onboarded DARTs into their assurance workflows. Türkiye also uses the tool, though not yet on a regular basis.

### Quote

"[DARTs is the] most user-friendly software in the UN."

—Hosna Malekzadeh, WFP Iraq

### Lessons learned

Leveraging technology and machine learning can simplify complex, resource-intensive tasks that require technical expertise, making them more scalable and accessible to non-technical staff.

### EYouth

**Thematic area:** Resilience and sustainable livelihoods

**Cross-cutting themes:** Gender

**Active in:** Middle East and North Africa Region

**Internal / External innovation:** External



Participants at EYouth at the “Beyond Unemployment” event. | Photo: EYouth

### Innovation overview

EYouth provides learning and training opportunities for refugees and host communities through their AI-based tech learning platform. The venture offers different types of online learning paths through an interactive methodology that helps young people acquire the necessary skills and find the right job.

### Results

In 2025, EYouth achieved remarkable impact by directly empowering 450,000 unemployed youth with essential skills and opportunities, while indirectly supporting an estimated 780,000 family members through the ripple effects of improved livelihoods. These outcomes were sustained by securing USD 3.2 million in grant funding from diverse external sources, enabling the organization to expand its reach, enhance program quality, and deepen its contribution to youth employability and economic resilience across the region.



**Thematic area:** Food systems and smallholder farmers

**Cross-cutting themes:** Climate action

**Active in:** Mali

**External innovation:** External



Farmers in the Obawale district of the Eastern Region of Ghana shelling their harvested maize from their farm where they adhered to advisories on farming practices disseminated by Ignitia. | Photo: Ignitia

### Innovation overview

Ignitia addresses the challenge of unreliable weather forecasts in sub-Saharan Africa, where climate change is increasingly affecting farming. By using AI and advanced physics, Ignitia delivers highly accurate, localized weather predictions and climate-smart agricultural advice to farmers. Ignitia’s collaboration with WFP expanded to Ghana in 2024, where the venture signed a Long-Term Agreement with WFP Ghana for the next three years.

### What was the Accelerator’s role?

The WFP Innovation Accelerator supported Ignitia with connections to WFP Mali as well as their network of farmers and the meteorological services in the country. As part of the project in Mali, the WFP Innovation Accelerator supported Ignitia with grant

funding to further refine and validate its agribusiness and agripreneur business models together with WFP Mali, a connection which helped Ignitia expand its operations in Ghana with WFP.

### Results

To date, Ignitia has served 3.7 million smallholder farmers, approximately 1 million of whom are recurrent users. In collaboration with WFP, Ignitia is exploring an initiative to support 100,000 farmers in Ghana in 2026. By providing critical weather updates and agricultural advice, the project aims to improve farmer yields by at least 10 percent.

### Lessons learned

With the formation of the right partnerships such as the Long-Term Agreement signed with WFP Ghana, Ignitia has a big potential to scale up across WFP operations and make its service accessible to many of the farmers supported by WFP.

## Imara Tech

**Thematic area:** Food systems and smallholder farmers

**Cross-cutting themes:** N/A

**Active in:** Tanzania

**Internal / External innovation:** External



*Smallholder farmers using Imara Tech's Multi-Crop Threshing machine. | Photo: Imara Tech*

### Innovation overview

Imara Tech is a Tanzanian start-up that mechanizes small farms with locally made agricultural machines. Imara Tech's first product is a multi-crop threshing machine, which threshes staple crops up to 75 times faster than traditional methods. The threshing machine can be used as an income-generating business, earning operators USD 10 per hour and saving farmers time and labor.

### Accelerator role

In 2022 and 2023, the WFP Innovation Accelerator supported Imara Tech in optimizing its scaling strategies by testing diverse marketing channels and piloting an asset-based financing model for youth. This partnership enabled the team to identify the effective methodologies needed to expand their footprint across Tanzania and neighboring countries, successfully delivering products and services to over 11,000 smallholder farmers in 2025.

### Results

Imara Tech is improving agricultural efficiency

in Tanzania, where it reached over 11,000 smallholder farmers in 2025, helping them reduce labor costs by 5 percent. Most notably, the venture’s technology has transformed post-harvest processing by reducing shelling time by 75 percent, empowering farmers to boost productivity while saving critical time and resources.

## **Koolboks**

**Thematic area:** Resilience and sustainable livelihoods

**Cross-cutting themes:** Climate action, Gender

**Active in:** Nigeria

**Internal / External innovation:** External



Customers with Koolboks unit in Yola, Nigeria. | Photo: WFP/Zehui Qiu

### **Innovation overview**

The lack of reliable, off-grid refrigeration in crisis-affected areas of Nigeria leads to food spoilage and loss, as well as limited access to essential services like lighting and energy for phone charging. Koolboks is making

refrigeration accessible in remote areas with innovative solar-powered refrigeration that ensures reliable cooling for up to seven days, no electricity needed. Their technology supports food preservation, small businesses and vaccine storage, while reducing dependency on expensive energy.

### **Accelerator role**

Koolboks participated in the Stability-and-Peace Accelerator supported by CGIAR, and is now considered an alumni. In 2025, the WFP Innovation Accelerator connected Koolboks with a few stakeholders in West Africa through the launch event of the West Africa Innovation Hub.

### **Results**

Koolboks freezers are transforming businesses by keeping food fresh longer, cutting electricity costs and boosting profits. Many customers have reduced their energy bills, with some abandoning the national grid entirely. Business owners gain an average of five extra selling hours daily, increasing income, while those selling perishables see spoilage losses drop by 70 percent. This simple yet powerful solution is improving livelihoods in off-grid communities. In 2025, Koolboks reached 5,600 small businesses, farmers and market vendors.

### **Quote**

“Since I started using Koolboks, I have completely disconnected from the national grid. Now my drinks are usually very cold

which has boosted my sales. I am happy I got the Koolboks freezers.”

—Mercy Efonya Bulus, restaurant owner in Yola, Nigeria

solar-powered refrigeration more accessible. Koolboks’ reliability compared to the grid is a key selling point, while tailoring products to local needs improves user satisfaction.

### Lessons learned

Effective marketing, education and flexible financing boost adoption, making



## 3.2 Scale Up Enablement

The WFP Innovation Accelerator transforms promising innovations into sustainable solutions. The Scale Up Enablement programme provides hands-on support, strategic guidance and access to WFP’s global network to help teams navigate the challenges of scaling. By equipping innovators with the right tools, expertise and pathways for growth, the Scale Up Enablement team accelerates solutions capable of improving lives at meaningful scale.

In 2025, the Scale Up Enablement programme and its alumni innovations reached more than 100 million people across 48 countries. The Scale Up Enablement programme doubled its reach in 2025, thanks to the success of its alumni and the innovations it supported in 2025, such as Sanku, plugPAY and CODA.

Sanku, which the WFP Innovation Accelerator has supported since 2019, reached an incredible 59.3 million people in Ethiopia, Nigeria and South Sudan in 2025 with fortified flour, improving nutrition

outcomes at scale. Sanku’s story, highlighted in its film [Hidden Hunger](#), received a UN FAO Award for Best Focus Film on Women in Agrifood Systems.

Throughout 2025, Scale Up Enablement actively engaged WFP business units, country offices and regional offices to create integrated strategies for its core thematic areas, including nutrition, supply chain, food systems, cash-based transfers, resilience and climate action. The team guided innovations on how to scale, sharing best practices and lessons learned on the enabling factors to scale high potential innovations, providing clear path-to-scale roadmaps for improved implementation.

## **CODA**

**Thematic area:** Nutrition

**Cross-cutting themes:** N/A

**Active in:** Ethiopia, Nigeria, South Sudan

**Internal / External innovation:** Internal



*Yakaka and her son Babagana in Maiduguri, Nigeria, receiving care for moderate acute malnutrition supported by the CODA smart card and application system. | Photo: WFP/Nommiyyid Chantu*

### **Innovation overview**

In resource-constrained settings, paper-based nutrition records hinder data access and programme efficiency. CODA digitizes assistance programmes through a mobile app and smart card, enabling individual tracking and seamless integration with national systems. CODA enhances data quality, supports evidence-based policymaking and

reinforces collaboration between WFP, UNICEF and governments. By providing insights on malnutrition and fostering data sharing, CODA advances a unified, efficient approach to nutrition programming for all stakeholders.

### **Accelerator role**

The WFP Innovation Accelerator played a key role in pre-testing, monitoring and strategy refinement, leading to a five-year scale-up plan. It has provided strategic support, facilitated partnerships and enhanced CODA’s visibility, ensuring long-term sustainability and global reach.

### **Results**

CODA has helped WFP support the nutrition outcomes of 110,000 children and pregnant and breastfeeding women or girls enrolled in CODA. The Integrated Management of Acute Malnutrition programmes CODA supports includes community mobilization, outpatient and inpatient care and management of moderate acute malnutrition. CODA has also trained 550 frontline health workers, community volunteers and partners in this programme implementation.

**Quote**

"CODA simplifies the work and it eases our workload. It saves us time and is much faster than traditional methods."  
—Elizabeth Atanasia, World Vision South Sudan

**Lessons learned:**

Integrating CODA with existing country-specific digital health platforms, such as DHIS 2, has been essential for efficient operations and long term scalability. Developing this interoperability streamlines data flows, enhances insight quality and reduces duplication across nutrition and health information systems.

**IRMA** 

**Thematic area:** Food systems and smallholder farmers, Resilience and sustainable livelihoods

**Cross-cutting themes:** N/A

**Active in:** Ethiopia

**Internal / External innovation:** Internal

**Innovation overview**

WFP’s Integrated Risk and Post-Harvest Management (IRMA) initiative in Ethiopia unites two proven WFP solutions, R4 and PHL Ventures, to reduce post-harvest losses with improved techniques and bolster farmers’ climate resilience with insurance, ultimately bolstering smallholders’ livelihoods and incomes.

**Accelerator role**

The team provided strategic oversight throughout IRMA’s design, offering innovation advisory support and contributing directly to its monitoring, evaluation and learning (MEL) analysis and providing recommendations for future iterations.

**Results**

IRMA’s pilot supported 8,500 farmers with climate-risk insurance and trained 2,000 in post-harvest technologies. Over USD 91,000 in payouts aided recovery, while improved storage reduced losses and raised grain quality. Farmers saw higher incomes and yields, with strong adoption of climate-smart practices and expanded participation in post-harvest loss management training.

**Quote**

"As a woman who manages most of the post-harvest work in the household, I have always struggled with proper storage. I used chemicals to prevent pests, but buyers would smell it and refuse to buy. Through the post-harvest loss management support, I was trained on how to dry, clean and store my grains using PICS bags, and I received five bags and a threshing mat. It was my first time using the PICS bags, and I am happy with the result. My grain remained clean, chemical-free, and I even earned a better price at the market."  
—Woman using post-harvest management techniques with IRMA

**Lessons learned**

Farmers eagerly adopt loss-reducing

technologies when tools arrive on time and in sufficient quantity. However, knowledge alone is not enough. Market access, timing and functional supply chains are essential. Strengthening input delivery, storage access, finance and market linkages emerged as critical to translating training into stronger resilience.

**Read:**

[Integrated Risk and Post-harvest Management in Amhara](#)

**PHLV** 

**Thematic area:** Food systems and smallholder farmers

**Cross-cutting themes:** N/A

**Active in:** Ethiopia, Rwanda, South Sudan

**Internal / External innovation:** Internal



*A woman uses post-harvest loss management techniques for covering unshelled maize in Gambella, Ethiopia. | Photo: WFP*

**Innovation overview**

The Post-Harvest Loss Ventures (PHLV) initiative promotes the adoption of advanced post-harvest loss management technologies among smallholder farmers. Through innovative business models, PHLV enhances the commercial viability of value chain actors

while improving farmers' access to these critical technologies. PHLV fosters adoption and builds demand for a sustainable market by developing innovative solutions at key entry points in the food value chain. These include streamlined equipment distribution, cost-effective extension services, digital data management, micro-financing for agricultural inputs and storage and empowering farmer groups for collective ownership of post-harvest equipment.

**Accelerator role**

PHLV is led by the WFP Innovation Accelerator, which employs a structured five-step approach to implementation: 1) identifying of suitable technologies, 2) raising awareness and promoting utilization, 3) supporting trade marketing, 4) advancing production, storage and handling techniques and 5) integrating these efforts with WFP interventions.

**Results**

Farmers' households implementing PHLV techniques increased their yields an average of 23.9 percent compared to 8.9 percent for those following traditional farming techniques. Similarly, their incomes rose 74 percent, compared to 42 percent of non-implementors.

**Quote**

“Before the intervention, I used to lose a large part of my maize harvest to pests and poor storage. But after receiving a plastic silo, PICS

bags, and post-harvest management training, everything changed.”

—Ajulu Kiru, a farmer in Abobo, Ethiopia

### Lessons learned

Embedding post-harvest loss reduction within existing, government-aligned value-chain efforts creates stronger, more sustainable results. When improved storage, training and extension support are layered together, farmers can meaningfully reduce losses, strengthen resilience and sustain impact beyond the project.

### plugPAY

**Thematic area:** Supply chain and delivery

**Cross-cutting themes:** N/A

**Active in:** Nepal, Nigeria, Peru, the Philippines, Sri Lanka, Ukraine, Zambia

**Internal / External innovation:** Internal



PlugPay enables people to receive cash-based assistance in the modality of their choice. | Photo: WFP

### Innovation overview

plugPAY is a digital payment platform that enables people to receive cash assistance

through a one-stop shop and modality of their choice.

### Accelerator role

The WFP Innovation Accelerator helped plugPAY scale by supporting strategy, partnerships, fundraising and communications. The team expanded plugPAY’s solutions, built forecasting tools and a scale roadmap, developed the partnerships strategy, supported multiple donor proposals and boosted global visibility through campaigns, briefings and events, positioning plugPAY for wider adoption.

### Results

As of the end of 2025, plugPAY has delivered USD 41 million to over 3 million people, cutting onboarding time by 79 percent and fees by 83 percent, saving WFP over USD 1 million. It transformed the delivery of cash-based transfers with faster, traceable payments. WFP country offices now provide instant, flexible transfers, improving access and operational agility in contexts like Nigeria, Ukraine, Nepal, the Philippines, Peru, Zambia and Sri Lanka.

### Quote

“When the flood entered our house in 2024, it washed away everything, even my bank documents. After that, I stopped using banks and saved any little money by tying it in the corner of my cloth, the way our mothers used to do. But in 2025, when WFP came for the anticipatory action targeting, they asked for my account details and I told them I had none.

They helped me open a new bank account, and for the first time I received support directly and safely on my ATM card. That simple step allowed me to prepare early and protect my family before the 2025 floods came again.”

—Maryam Abdullahi, a woman receiving WFP assistance via plugPAY in Nigeria

## Inclusive Risk Financing

**Thematic area:** Food systems and smallholder farmers, Resilience and sustainable livelihoods

**Cross-cutting themes:** N/A

**Active in:** Côte d'Ivoire

**Internal / External innovation:** Internal



A beneficiary of WFP's index insurance project, in the cocoa field of his cooperative in Guiglo, Côte d'Ivoire. | Photo: WFP/Leslie Kouadio

### Innovation overview

Côte d'Ivoire produces 45 percent of global cocoa, supporting over 1 million largely impoverished households. In 2023, WFP provided climate-index insurance to 5,111 rice farmers also involved in cocoa production through the Inclusive Risk Financing initiative,

granting further income stability and resilience.

### Accelerator role

The WFP Innovation Accelerator supported the Inclusive Risk Financing initiative to scale their programme into a new geography and pilot the diversification of micro-insurance of a new crop, cocoa, with an area-yield index microinsurance programme. The WFP Innovation Accelerator facilitated a path to scale workplan which operationalized the implementation of the pilot, starting with a feasibility study to select a geography and launching the solution in the selected geography, Côte d'Ivoire.

“I feel supported, and I hope that my work will progress. Insurance gives me real peace of mind. I can fully focus on my work without the constant fear of losses due to climate risks.”

—Gueï Débora, a member of one of the cooperatives supported by WFP

### Results

The initiative launched an innovative weather-based drought index insurance scheme that provided financial protection for 5,111 rice farmers in Côte d'Ivoire against climate shocks, such as dry spells or excess rainfall and supported diversification to rice farming, reaching 30,666 people.

## Sanku

**Thematic area:** Nutrition

**Cross-cutting themes:** N/A

**Active in:** Ethiopia, Kenya, Tanzania  
**Internal / External innovation:** External



Sanku equips small maize flour mills with fortification tools to improve nutrition outcomes. | Photo: Sanku

### Innovation overview

Sanku addresses the lack of essential nutrients in many diets by equipping small maize flour mills in Africa with fortification tools, training and premix dosifiers to ensure precise nutrient addition. By offsetting costs, leveraging the Internet of Things for monitoring and providing nutrient premix and other key inputs, Sanku enables sustainable, large-scale fortification.

### Accelerator role

The WFP Innovation Accelerator assists Sanku by facilitating collaborations and learning opportunities on business challenges and developing detailed work plans with specific activities, deadlines and roles, ensuring ongoing monitoring through governance structures to ensure successful scale-up to newer geographies. It played a critical role in Sanku’s expansion into Ethiopia in 2025.

### Results

In 2025, Sanku reached 59.3 million people with fortified flour, nearly doubling their previous reach of 32 million. Sanku reached this scale by bringing small and large millers into one integrated system and improving their pre-mix quality. Nearly 1,700 mills are now implementing fortification via Sanku’s support and technologies. The nearly 60 million people now consuming fortified foods can now fill micronutrient gaps and improve nutrition and health outcomes.

“Fortification is not just ticking a box. It is about making every meal count.”

—Cylas, a lead mill operator, Kiambu County, Kenya

### Lessons learned

Increased reach can sometimes still mean reduced costs for innovation operations. As more millers work with Sanku, expanding their reach, Sanku was also able to scale their premix production, lowering cost and increasing reliability. It now has an annual cost per person of USD 0.12.

### [Solar 4 Resilience \(S4R\)](#)

**Thematic area:** Food systems and smallholder farmers, Resilience and sustainable livelihoods

**Cross-cutting themes:** Climate action, Gender

**Active in:** India

**Internal / External innovation:** Internal/External



Women can become micro-entrepreneurs through Solar 4 Resilience, which grants them small low-interest loans to acquire solar dryers to process and preserve perishable crops for sale. | Photo: Solar 4 Resilience

### Innovation overview

Solar 4 Resilience (S4R), developed by WFP in Odisha and S4S Technologies, scales solar-powered food processing to strengthen livelihoods for women and smallholder farmers. Through low-interest loans, women acquire solar dryers to preserve perishable crops, become micro-entrepreneurs, access new markets and receive training in finance, quality assurance and food processing.

### Accelerator role

The WFP Innovation Accelerator supported the launch of the S4R initiative, between WFP India, S4S Technologies and the government of Odisha, and delivered technical support and grant funding.

### Results

Twelve processing units now operate through the efforts of 36 women microentrepreneurs. These units have processed over 400 mt of horticulture produce and generated more than INR 10 lakh (approximately USD 10,800), benefiting the 36 women directly and over

1,000 additional community members indirectly.

### Quote

"I have been working on this project for the past year, where we process locally grown cabbage and pumpkins. We start by cutting the vegetables using cutter machines, then use a drying fan and solar dryers to remove moisture and dry the cut pieces. The entire process takes about three days. Once dried, we pack and store the products ready for distribution. I earn around INR 8,000 (approximately USD 92) every month, which allows us to have more nutritious food as a family. Working with other women creates a bond as we learn together. We all have dreams and things we want to do with this success."

— *Jasmin Muni, a woman processing local produce with S4R in Odisha, India.*

## Alumni

### [Chakki](#)

**Thematic area:** Nutrition

**Cross-cutting themes:** N/A

**Active in:** Pakistan

**Internal / External innovation:** Internal



A small-scale miller showing his fortified wheat flour. With Chakki, millers can fortify their products, ensuring micronutrient richness for their customers. | Photo: WFP Pakistan

### Innovation overview

Chakki is an innovative approach to improving nutrition by fortifying wheat flour consumed in Pakistan. It equips small-scale mills, or *chakkis*, with innovative technology, skills and funding to fortify up to 89 percent of the country's wheat flour, improving nutrition and combating malnutrition nationwide. For many people, particularly the most vulnerable, purchasing wheat flour from the 70,000 small millers in Pakistan, Chakki addresses a gap not served by large-scale food fortification solutions.

### What was the Accelerator's role?

The WFP Innovation Accelerator supported Chakki by providing strategic guidance in communications, partnerships, donor relations and innovation methodologies such as human-centred design and lean startup. As part of the Scale Up Enablement programme, Chakki's dedicated scale-up manager facilitated access to subject matter experts

and provided advisory services to mitigate risks and maximize results.

### Results

In 2025, Chakki provided 165 small-scale millers access to fortified wheat flour, resulting in 113,158 people consuming fortified flour and receiving additional nutritional benefits. Many millers also experienced an increase in sales between 25 and 65 percent, improving their economic opportunities.

### Quote

"With very little investment, fortification can make a huge impact on diets, health and social assistance."

—Mahamadou Tanimoune, Policy Programme Officer, WFP Pakistan

### Lessons learned

Presenting fortification as a cost-effective approach to improve nutrition, public health and social welfare created opportunities for strategic investment.

### [H2Grow](#)

**Thematic area:** Food systems and smallholder farmers, Resilience and sustainable livelihoods

**Cross-cutting themes:** Climate action

**Active in:** Global

**External innovation:** Internal



H2Grow creates affordable hydroponic solutions that use less water and resources than traditional growing techniques. | Photo: WFP/Lisa Murray

### Innovation overview

Food production is challenging for vulnerable communities due to unreliable water, poor soil and limited land. WFP’s H2Grow tackles these issues by providing locally adaptable and affordable hydroponic solutions that enable plant growth without soil, using minimal water. By leveraging low-tech systems built from local materials, H2Grow empowers food-insecure families to grow fresh vegetables or animal feed in even the harshest environments, improving nutrition and creating new income opportunities.

### What was the Accelerator’s role?

The WFP Innovation Accelerator launched the H2Grow initiative and provided interested country offices with technical support and advisory for the setup of the programmes locally. Building on the success of H2Grow throughout the years, in 2024, the WFP Innovation Accelerator launched the H2Grow/Hydroponics Community, which provides a central platform for all WFP employees to access hydroponics resources from WFP country offices and focal points, as well as hydroponics training videos.

### Results

In Somalia in 2025, 271 individuals received hands-on training on how to use the H2Grow system to grow plants with minimal resource usage. This includes 61 students who received hands-on practical training, engaging the next generation of resource-saving farming and 430 individuals who were trained in nutrition-sensitive agriculture and fodder production to strengthen resilience and improve food security. H2Grow continues to operate in other WFP operations across multiple country contexts.

### Payment Instrument Tracking

**(PIT)** 

**Thematic area:** Supply chain and delivery

**Cross-cutting themes:** N/A

**Active in:** 28 countries

**Internal / External:** Internal



Payment Instrument Tracking helps track end-to-end distribution of assistance. | Photo: WFP/ Miranda Stobbs

### Innovation overview:

Payment Instrument Tracking is a solution that enables WFP to track the end-to-end process of card and food distribution and verifies recipients’ identity in the process. The

application simplifies card distribution, which optimizes resources and reduces wait time and clerical errors. By using the tool WFP staff can verify people’s identities, ensuring payment cards are delivered to the right people.

### What was the Accelerator’s role?

Payment Instrument Tracking is an alumnus of the Scale Up Enablement programme.

### Results

In 2025, 7.5 million people benefited from assistance via Payment Instrument Tracking’s improved payment instrument management.

### Quote

“The PIT application helps us track SIM cards from the moment they arrive at WFP until they are distributed to the people we serve. Now, the cooperating partner only has to scan each SIM card and the app automatically produces a distribution report. The application has brought immeasurable gains for us at WFP.”

—Officer, WFP Madagascar

## Take Home Rations

**Thematic area:** Nutrition

**Cross-cutting themes:** Gender

**Active in:** India

**Internal / External innovation:** Internal



Anuradha with son Govind, who both receive Halwa from the Take Home Rations programme. | Photo: WFP

### Innovation overview

In India, WFP supports the government in enhancing the quality, demand and consumption of supplementary nutrition through Take Home Rations. The initiative uses a hub-and-spoke model to build resilient supply chains and engages women’s self-help groups to distribute nutritional products. Through an app-based training programme, these groups receive tutorials to develop and distribute products. The programme also includes e-learning modules, tablets and supplies to improve supply chain efficiency in Uttar Pradesh.

### What was the Accelerator’s role?

The WFP Innovation Accelerator provides specialized assistance to Take Home Rations through a scale-up project manager. With support from the Innovation Accelerator, WFP India procured 204 tablets which were distributed to women’s micro-enterprise units. These devices provided on-the-job training through 12 dedicated e-modules developed as part of the sprint to address capacity-building needs.

## Results

Take Home Rations has built capacities for 4,080 women in self-help groups in Uttar Pradesh who produce Take Home Rations. WFP distributed nutritional products to 7.2 million people, improving outcomes. Capacity-building efforts continue to improve food safety, hygiene and quality of the product. WFP India has raised more than USD 6.9 million to continue implementing Take Home Rations and is collaborating with more than 200 organizations on the initiative.

"My child loves the Halwa received from the Anganwadi Centre. He recognizes the light green color of the Take Home Rations packet and does not allow anyone to take it."  
—Anuradha, mother of two-year-old Govind

## Lessons learned

Introducing a market-based approach boosts financial sustainability for micro-enterprises while providing additional income opportunities for women, contributing to gender equity.

## Quote



## 3.3 Frontier Innovations

New technologies are rapidly reshaping how societies function, including the way humanitarian assistance is designed and delivered. At the WFP Innovation Accelerator, the [Frontier Innovations team](#) explores and implements emerging technologies such as artificial intelligence, blockchain, digital assets, fintech, autonomous vehicles and robotics to strengthen humanitarian and development operations. Working closely with WFP teams and a global network of scientific and

technical partners, the team identifies promising opportunities, tests practical solutions and supports their responsible integration into WFP's work.

In 2025, the Frontiers' team advanced WFP's use of frontier technologies for more effective and accountable humanitarian response. Operating at the intersection of research, technology development and field operations, the team helps WFP navigate increasingly complex environments and make better use of data and digital tools.

The team notably led the development of WFP's innovation frontier-tech partnerships, such as the [Strategic AI Partnership for Humanitarian Actions](#), with CERN, the Luxembourg Institute of Science and Technology (LIST) and the Government of Luxembourg. In 2025, the partners established shared governance structures, responsible-AI frameworks and priority use cases, creating the pathway for implementing AI systems suited to crisis contexts. The team presented and advanced humanitarian AI applications at WFP's first AI for Impact Ecosystem Event at the WFP Innovation Accelerator office and at the AI for Good Global Summit in Geneva. Within WFP, three Frontiers-led AI initiatives were selected for the Critical Corporate Initiative, reflecting their strategic relevance among a large pool of internal proposals.

The team also supported WFP's leadership in blockchain for humanitarian assistance. [Building Blocks](#), the world's largest humanitarian blockchain application, rejoined the Innovation Accelerator portfolio in 2025 while working with the WFP technology unit, enabling the Frontiers team to help upgrade its internal systems, reinforce its responsiveness to operational needs and explore additional use cases for blockchain. Alongside this work, in 2025 the team expanded its digital financial infrastructure initiatives, including actively exploring stablecoin solutions to assess their potential for improving the speed, transparency and cost-efficiency of assistance delivery in volatile environments, while promoting financial inclusion of WFP beneficiaries at the same time.

Together, these efforts reflect WFP's commitment to responsibly integrating frontier technologies that can enhance transparency, efficiency and service delivery.

## **AHEAD**

**Thematic area:** Emergency preparedness and response

**Cross-cutting themes:** N/A

**Active in:** In development

**Internal / External:** Internal



AHEAD vehicle during a demonstration in Nordheim am Main, Bavaria, Germany, in summer 2024.  
| Photo:DLR

### Innovation overview

Delivering aid in high-risk environments endangers workers and disrupts critical operations. The AHEAD (Autonomous Humanitarian Emergency Aid Devices) innovation, developed in collaboration with the German Aerospace Center (DLR), enhances last-mile delivery by integrating tele-operated capabilities into all-terrain vehicles already in use by WFP in regions such as South Sudan, and the Democratic Republic of Congo. This technology enables safer, more efficient aid distribution in disaster-affected areas, helping navigate conflict zones, minefields, floods and medical emergencies.

### Accelerator role

The WFP Innovation Accelerator served as a critical link between the parties working on AHEAD, including DLR and the WFP supply

chain division, who led the development of the system and pinpointed real-world needs for deployment, respectively. Acting as a bridge between WFP's operational teams and DLR, the WFP Innovation Accelerator ensured that the technical innovation aligned with on-the-ground requirements.

### Results

In 2025, AHEAD progressed from early prototyping into a structured multi-year demonstration and validation phase. DLR formally launched the next stage of the programme, supported by new funding from the Bavarian Ministry of Economic Affairs, which enabled the expansion of testing and development activities. With this support, partners confirmed a roadmap for large-scale civil-disaster protection exercises in Germany in 2026 and humanitarian validation in Africa in 2028. These developments reflect growing confidence in AHEAD's tele-operation and semi-autonomous capabilities and its potential to enhance safe, reliable last-mile delivery in high-risk environments.

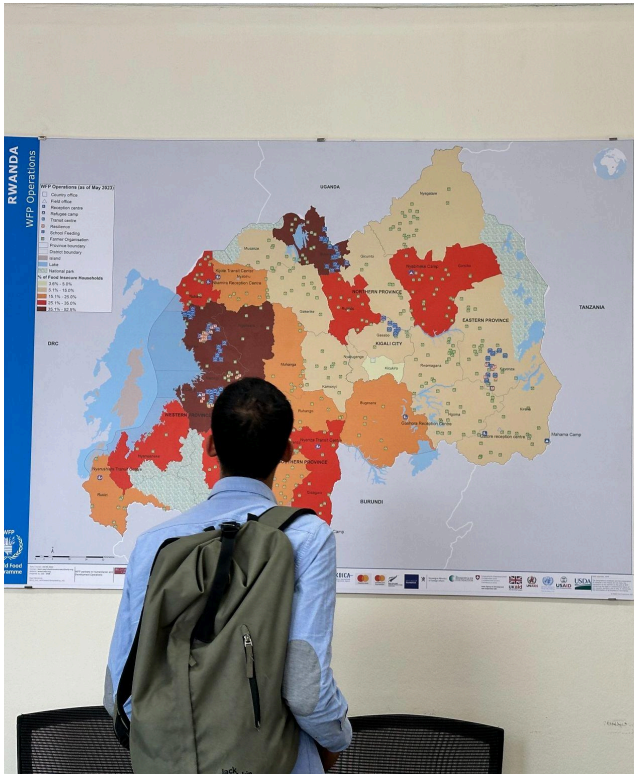
### AI 4 Social Protection

**Thematic area:** Emergency preparedness and response

**Cross-cutting themes:** N/A

**Active in:** In development

**Internal / External innovation:** Internal



*AI for Social Protection supports the integration into Rwanda's disaster risk management system. | Photo: WFP/Rizwan Sadiq*

### Innovation overview

AI for Social Protection supports the Government of Rwanda's efforts to strengthen disaster preparedness and response by applying AI to improve early warning, data integration and decision-making. The initiative focuses on enhancing national disaster risk management systems with AI-driven insights that can help anticipate and respond to hazards more effectively.

### Accelerator role

Together with the Rwanda Country Office, the WFP Innovation Accelerator team conducted a comprehensive AI landscape analysis, assessing Rwanda's existing disaster risk

management systems, identifying priority needs and evaluating readiness for AI adoption. The final report, formally accepted by the Government of Rwanda, highlighted flood forecasting as a key use case and defined the direction for implementation. The initiative is now developing enhanced flood-forecasting capabilities by integrating Google Flood Hub customized models into a new dashboard led by ESRI Rwanda, laying the foundation for a fully operational, locally-adapted early warning tool.

### Results

AI for Social Protection has provided the Government of Rwanda with a clear roadmap for enhancing disaster preparedness and response through improved data coordination and targeted AI adoption. The initiative has informed national planning and investment decisions and is now advancing a priority flood-forecasting model to reinforce early warning systems. Capacity-building workshops and hands-on training are equipping national counterparts to manage and evolve these tools, ensuring that Rwanda's AI-enabled disaster management remains locally led and sustainable.

### AI4Legal

**Thematic area:** Workplace management

**Cross-cutting themes:** N/A

**Active in:** In development

**Internal / External innovation:** Internal



AI4Legal supports colleagues in the WFP Legal Office in using AI to enhance service delivery. | Photo: WFP

### Innovation overview

AI4Legal supports the WFP Legal Office in exploring, adopting and implementing AI to enhance service delivery and streamline workflows. By integrating AI-driven tools, the initiative aims to optimize legal processes, improve efficiency and enhance decision-making within the Legal Office.

### Accelerator role

The WFP Innovation Accelerator provides AI advisory services, assessing corporate tools and off-the-shelf solutions suitable for the Legal Office's needs. Additionally, it supports strategic engagement with WFP's Technology Division and partners to develop a roadmap for AI implementation within the office's operations.

### Results

To date, the initiative has defined a clear AI vision for the WFP Legal Office, explored potential partnerships, identified relevant off-the-shelf solutions and developed a proof-of-concept AI tool to summarize judgments of the UN International Labour Organization Administrative Tribunal. Through this work, the team has laid the strategic and operational groundwork for integrating AI into the office's workflows, establishing a shared vision, engaging stakeholders consistently, identifying priority use cases, delivering two functional proof of concepts and evaluating key technologies through vendor engagements. These efforts prepared the office for AI adoption, demonstrated tangible value through early prototypes and provided a clearer understanding of the opportunities and constraints that will shape the next phase of implementation.

### AI for Country Strategic Planning

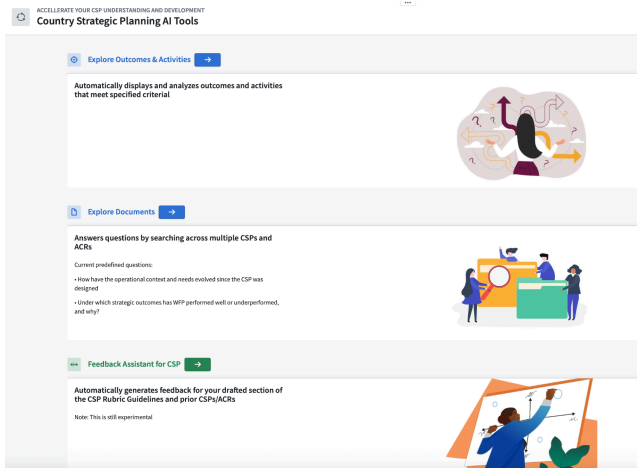


**Thematic area:** Workplace management

**Cross-cutting themes:** Climate action, Gender

**Active in:** In development

**Internal / External innovation:** Internal



AI4CSP interface. | Photo: WFP

### Innovation overview

AI for Country Strategic Plans is an AI-powered system designed to analyse complex documents, including country strategic plans, evaluations, WFP strategies and assessments, to support strategic decision-making in plan formulation. It identifies relevant outcomes and activities, answers queries across country strategic plans and annual country reports and auto-generates strategic outcome sections based on prompts and past documents.

### Accelerator role

The WFP Innovation Accelerator provided technical support for the development of the tool.

### Results

By consolidating data from multiple sources with AI, the system is positioned to significantly shorten the development time of country strategic plans, which can currently take up to 18 months. The demonstration of the first prototype generated multiple

requests for expanded functionality. The minimum viable product was completed in March 2025 and presented during UN 2.0 Week, highlighting its potential to deliver major efficiency gains and improve accuracy and alignment across WFP’s strategic planning processes.

## Anomaly Detection for Assistance Delivery

**Thematic area:** Supply chain and delivery

**Cross-cutting themes:** N/A

**Active in:** In development

**Internal / External innovation:** Internal



A biometric registration and food distribution operation carried out by WFP in North Kivu, in the Democratic Republic of the Congo. Photo: WFP/Michael Castofas

### Innovation overview

Anomaly Detection for Assistance Delivery (ADAD) uses AI to identify data anomalies during the delivery of humanitarian assistance. This technology seeks to address the challenges in detecting irregularities during beneficiary registration and cash-based transfers, ensuring WFP is effectively reaching the people we serve.

### Accelerator role

The WFP Innovation Accelerator works with CERN to quickly build AI tools that detect anomalies in registration data. For ADAD, the team has provided project management support, AI expertise and data analyses, helping create a minimum viable product. WFP and CERN have helped the ADAD team understand the business problem it is solving and explored new partnerships for the solution's development. By bringing together data scientists, field experts, and innovation support, tools like ADAD turn complex machine-learning methods into simple, actionable tools.

### Results

In 2025, the ADAD project team presented a minimum viable product for the beneficiary registration operations use case. The team validated the model performance with test data from WFP Somalia, where ADAD analysed the data from more than 500,000 registered beneficiaries and identified anomalies with a financial exposure of approximately USD 1.7 million. The solution was able to shorten analysis time from 2 weeks to 5 minutes. Following this, the team

will conduct an extended pilot in Somalia to gather further insights on impact before the project expands to transaction data.

### Lessons learned

Engaging the WFP Global Privacy Office early ensured smooth reviews and timely compliance, preventing delays and building trust. The team also learned to define impact-measurement expectations from the start. Clear hypotheses, metrics and data needs help teams demonstrate progress, communicate value confidently and build a strong evidence base for decision-makers.

### Read

[How WFP and partners are using AI to support humanitarian response in emergencies: Three real-world examples](#)

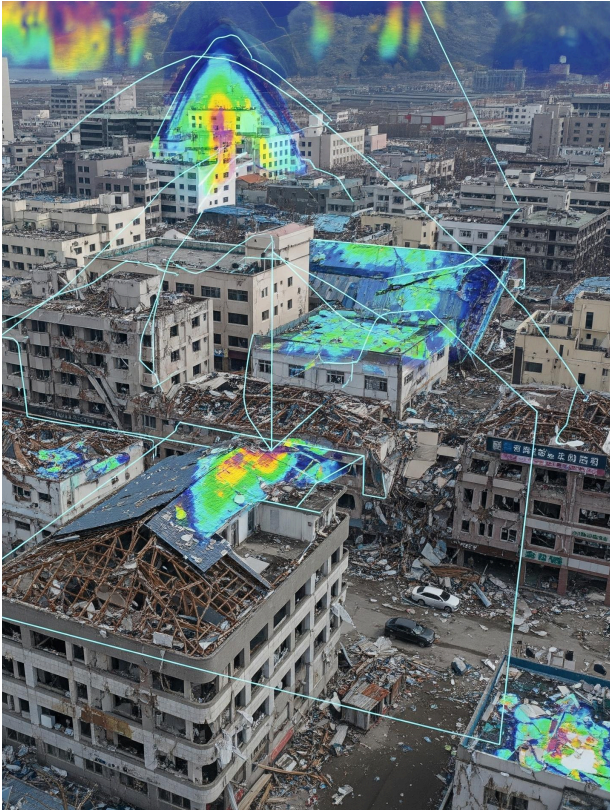
## Building Damage Assessment

**Thematic area:** Emergency preparedness and response

**Cross-cutting themes:** N/A

**Active in:** In development

**Internal / External innovation:** Internal



*Building Damage Assessments uses radar imagery to map destruction across vast areas, such as buildings. | Photo: WFP/AI-generated.*

### **Innovation overview**

Building Damage Assessment (BDA) introduces an AI-powered, all-weather damage assessment system that uses radar imagery to map destruction across vast areas, even when clouds, smoke or darkness make traditional optical methods impossible. By leveraging self-supervised learning and a design built to generalize across countries, disaster types, and building styles, the system provides fast, reliable insights that reduce reliance on manual interpretation and slow third-party processes. The result is a scalable, near-real-time overview of damage that helps emergency teams act sooner, coordinate

more effectively and deploy resources with far greater confidence.

### **Accelerator role**

The WFP Innovation Accelerator partners with the Luxembourg Institute for Science and Technology (LIST) to rapidly develop geospatial AI tools for real emergencies. It supports fast development from research to prototypes, ensuring ethical standards and field relevance. By coordinating experts and innovation support, it turns advanced remote-sensing AI into practical solutions for emergency response.

### **Results**

The new damage-assessment model scans crisis areas up to 64,000 km<sup>2</sup> in minutes, giving teams an immediate view of severe destruction. In major emergencies, like the Türkiye earthquake in 2023, it has reached nearly 90 percent accuracy, helping responders quickly prioritize hardest-hit communities so lifesaving assistance arrives faster.

### **Lessons learned**

Strategic AI partnerships, such as that between WFP and the Luxembourg Institute for Science and Technology (LIST), are greatly valuable in enabling scalable, rapid SAR-based damage assessments and complementing optical tools like SKAI. Standardized pipelines and cross-agency coordination are key to ensuring reliability, coverage and operational impact across diverse disaster contexts.

## Crop Yield Early Estimation

**Thematic area:** Emergencies and Preparedness

**Cross-cutting themes:** N/A

**Active in:** In development

**Internal / External innovation:** Internal



*Crop Yield Early Estimation supports WFP by blending AI, satellite imagery and advanced crop and climate models to deliver crop forecasts for smallholder farmers. | Photo: WFP*

### Innovation overview

Crop Yield Early Estimation (CYEE) introduces an AI-driven approach that blends satellite imagery with advanced crop and climate modeling to deliver season-long forecasts of crop production, earlier than traditional assessments. This innovation gives WFP and governments a timely, data-driven early

warning system, enabling earlier decisions that can mitigate food insecurity and protect vulnerable communities.

### Accelerator role

The WFP Innovation Accelerator brings together the WFP Analysis, Planning and Performance and Programme Divisions, CERN and LIST together to rapidly advance CYEE to usable products. Through structured scoping, data exploration and joint model development, it aligns science with operational needs, ensuring the tool becomes a practical, decision-ready asset for early warning and food-security planning.

### Results

CYEE is currently in development and early testing stages, with initial testing demonstrating that the approach can begin to capture meaningful yield patterns using climate and satellite data.

### Lessons learned

A fail-fast mindset helps teams test early, learn quickly and avoid wasting effort, enabling more creative, effective solutions. Equally, strong technical capacity across all partners improves collaboration, decision-making and shared ownership. When everyone understands the technical work, complex solutions can turn into practical, field-ready innovations.

## Displacement Watch

**Thematic area:** Emergency preparedness and response

**Cross-cutting themes:** N/A

**Active in:** In development

**Internal / External:** Internal



Displaced Syrian families receiving food assistance in Maskaneih city. | Photo: WFP/Marwa Bana

### Innovation overview

Displacement Watch is a centralized analytics platform that helps WFP understand and respond to global displacement crises. Developed through a collaboration between the WFP Innovation Accelerator Frontier Innovations team, Netlight and academic partners, the tool provides real-time insights into displacement patterns, conflict events and humanitarian needs. By integrating global displacement and conflict data from reputable international sources, Displacement Watch

enables WFP analysts to anticipate where humanitarian needs will rise, ensuring timely and effective assistance for displaced communities.


### Accelerator role

The WFP Innovation Accelerator facilitated close collaboration between WFP analysts, Netlight consultants and academic partners, ensuring that technical development remained grounded in operational realities.

### Results

In 2025, WFP brought Displacement Watch to operational readiness, preparing it for integration into DataViz, WFP's internal platform for interactive analytics and data exploration. With support from Netlight, the team augmented data pipelines, refined the global map and ensured alignment with WFP's open-source principles. These improvements created a transparent, scalable system that brings together displacement and conflict data in one place. Once fully rolled out, Displacement Watch will provide a clearer picture of displacement hotspots, supporting more informed decisions on resource allocation and crisis response so that life-saving assistance reaches the communities that need it most.

### Read

[How WFP and Netlight transform real-life data into insights on global displacement and crisis response](#) 

## Global Fleet Anomaly Detection

**Thematic area:** Supply chain and delivery

**Cross-cutting themes:** N/A

**Active in:** In development

**Internal / External innovation:** Internal



WFP's global fleet team. | Photo: WFP, AI-generated

### Innovation overview

Global Fleet Anomaly Detection is an emerging analytics solution designed to strengthen WFP's fleet management by automating the identification of irregular patterns in operational data. By applying advanced algorithms to continuously monitor fleet information, the tool aims to flag anomalies early, reduce reliance on manual checks and improve the overall reliability of fleet data. This capability supports faster, more informed operational decisions and helps ensure that fleet performance issues are addressed before they escalate.

### Accelerator role

The WFP Innovation Accelerator guided the product vision and roadmap to ensure alignment with WFP's broader supply chain strategy. Acting as the central coordination point, the WFP Innovation Accelerator connected technical partners such as CERN and Netlight with operational users from WFP across global fleet and field coordination. This collaboration ensured that development remained grounded in real operational needs and that the tool evolved toward a practical, scalable solution for fleet managers.

### Results

Throughout the exploratory phase, the Global Fleet Anomaly Detection team demonstrated the potential of automated anomaly detection to strengthen fleet oversight. The system is expected to deliver real-time alerts when irregularities occur, enabling managers to take immediate corrective action. Continuous monitoring will generate data-driven insights into performance trends, improving the accuracy of reporting and supporting more strategic planning and resource allocation. By identifying issues early, the tool will help shift fleet management from reactive troubleshooting to proactive performance improvement.

### Lessons learned

The initial data analysis revealed key data quality gaps that directly influence operational efficiency. Understanding these foundational issues has helped clarify where improvements in data capture and system integration will

have the greatest impact on future fleet performance.

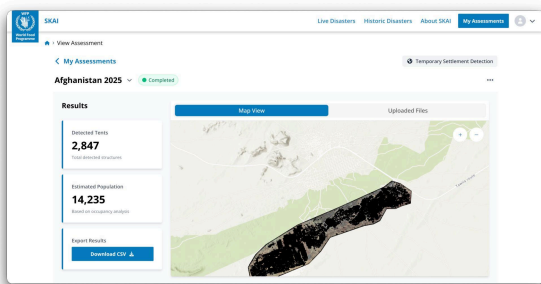
## SKAI+

**Thematic area:** Emergency preparedness and response

**Cross-cutting themes:** N/A

**Active in:** Global

**Internal / External innovation:** Internal



SKAI+ interface. | Photo: WFP

### Innovation overview

SKAI is an AI-powered platform developed by WFP with Google Research to support rapid disaster assessment through satellite imagery. By automating building-damage detection, it can generate impact analyses in under 48 hours, significantly reducing the time and cost of traditional assessments. In February 2025, the open-source SKAI solution was awarded the 'AI for Efficiency' prize at the AI Summit Paris, recognizing the tangible positive change it delivers in real-world operations.

SKAI+ extends this capability. Developed by WFP in collaboration with Netlight, it introduces a visual web interface, additional analytical models and improved accessibility for WFP teams. With tools such as

building-damage assessment, temporary settlement detection and a radar-based model developed with the Luxembourg Institute of Science and Technology, SKAI+ forms a scalable disaster-intelligence ecosystem that advances operational decision-making.

### Accelerator role

The WFP Innovation Accelerator played a key role in the development and scaling of SKAI and SKAI+ by coordinating technical partners, providing funding and guiding product development. Through close collaboration with Google Research, Netlight and WFP emergency teams, the Accelerator helped refine the AI models, shape the user interface and ensure alignment with WFP's operational and responsible-AI standards. Field testing and real-world deployments helped ensure that SKAI+ evolved into a practical, open-source tool for humanitarian response.

### Results

SKAI has already demonstrated its value in real-world emergencies. It supported damage assessments after the Türkiye-Syria earthquake in 2023, Hurricane Ian in 2022 and major floods in Pakistan and Durban, helping partners accelerate response and improve situational awareness. In 2025, SKAI analysed nearly 500,000 buildings after the Myanmar earthquake and more than 300,000 following the Sri Lanka cyclone, while the radar-based model was tested after an earthquake in Afghanistan. Under SKAI+, the temporary settlement detection model performed

strongly at MVP stage and is planned for pilot deployment with WFP country offices in March 2026, marking an important step toward operational integration.

## **AIDONIC**

**Thematic area:** Supply chain and delivery

**Cross-cutting themes:** N/A

**Active in:** Global

**Internal / External innovation:** External



Food for Crisis implemented a Proof-of-Concept (PoC) at the WFP Country Office in Peru, with WFP staff in collaboration with AIDONIC. | Photo: WFP

### **Innovation overview**

AIDONIC is a blockchain-enabled platform designed to improve the transparency and traceability of humanitarian assistance. As part of WFP’s Food for Crisis initiative, it was tested with WFP Peru to assess how web3 technologies can fortify documentation, verification and protection of cash-based assistance for migrant communities. The proof of concept, launched in late 2024, evaluates whether the tool can support more efficient and accountable aid delivery.

### **Accelerator role**

The WFP Innovation Accelerator facilitated the matchmaking between AIDONIC and WFP Peru and reviewed the platform’s traceability features for potential adoption within the Food for Crisis initiative. The Accelerator also supported the design of the proof of concept and advised on data assurance, privacy safeguards and integration with WFP workflows.

### **Results**

In Peru, WFP and AIDONIC tested a digital traceability system that securely recorded donation and cash-assistance transactions while keeping personal data off-chain. The test showed that the blockchain-based solution can improve data accuracy and confidence in reporting. According to WFP Peru, the proof of concept achieved efficiency gains of 48 percent and cost reductions of more than 25 percent, with improvements for both beneficiaries and backend processes.

### **Quote**

“By providing a seamless, AI-powered and blockchain-secured platform, AIDONIC aims to simplify the complex processes from data collection to aid distribution, allowing organizations like WFP to serve vulnerable populations with the speed and accuracy they deserve. Together, we are setting a new standard in humanitarian operations.”

—Severiyos Gabri, Founder and CEO, AIDONIC

## **Building Blocks**

**Thematic area:** Emergency preparedness and response

**Cross-cutting themes:** N/A

**Active in:** Bangladesh, Jordan, Palestine, Syria, Ukraine

**Internal / External:** Internal



Subatra Das, IT operations officer at WFP Bangladesh. | Photo: WFP/Mohammad Nayeem Sobhan

### Innovation overview

Building Blocks is the world's largest blockchain-based humanitarian platform. Developed by WFP, it enables multiple organizations to coordinate assistance while protecting personal data. On the platform, each person is assigned to a unique blockchain account, allowing agencies to see

what aid has been provided and avoiding unintended duplicated assistance.

### Accelerator role

Building Blocks started as a 100-person pilot in Pakistan, with support from the WFP Innovation Accelerator's sprint programme. It then joined the Accelerator's Scale Up Enablement Programme. Since 2017, Building Blocks has been scaled to provide USD 325 million worth of cash transfers to 1 million refugees in Bangladesh and Jordan, making it the world's largest implementation of blockchain technology for humanitarian assistance.

In 2025, the Accelerator supported Building Blocks to improve their internal infrastructure, which is expected to generate efficiency gains and higher capacity to operate. In addition, the Accelerator worked together with the Building Blocks team in a broader roadmap to provide better services.

### Results

Since 2022, Building Blocks has supported humanitarian organizations in coordinating assistance and preventing unintended overlap at scale. Across all operations, the platform has helped avoid spending USD 288 million in unintended assistance, including more than USD 270 million in Ukraine alone, while facilitating coordinated support for 4.8 million households. Building on established operations in Jordan, Bangladesh and Ukraine, the system is now being rolled out in Syria and Palestine.

In 2025, 159 organizations across Ukraine, Syria and Palestine used Building Blocks to align assistance and improve transparency. The platform continues to expand as a shared, privacy-preserving service that helps humanitarian actors deliver more equitable and efficient support.

**Quote**

“Building Blocks helps us make sure no family is left behind. By connecting organizations through one secure system, we can coordinate better, reach people faster and use every resource to make the greatest impact.”

—Subrata, IT operations officer, WFP  
Bangladesh

**Hesabpay** 

**Thematic area:** Supply chain and delivery

**Cross-cutting themes:** Gender

**Active in:** Afghanistan

**Internal / External innovation:** External



Bibi Koh and her family, beneficiaries of HesabPay, in their home in Afghanistan. | Photo: WFP/Hasib Hazinyar

**Innovation overview**

HesabPay is an Afghanistan fintech solution providing secure digital cash transfers to vulnerable communities in Afghanistan. With HesabPay, WFP recipients, particularly women, can access aid through digital wallets, SMS-based phones or debit cards. They no longer have to wait in long queues, providing dignity of access. With their own financial accounts, they are empowered to withdraw cash or make purchases at 1,000 local merchants. Operationally, HesabPay’s blockchain-backed reporting ensures real-time transparency, enhancing WFP’s operational accountability.

### Accelerator role

The WFP Innovation Accelerator supported the selection and implementation of HesabPay in 2023, helping WFP Afghanistan define key performance indicators and customize a dashboard for enhanced data assurance and reconciliation using blockchain technology. The WFP Innovation Accelerator also advised WFP Afghanistan on how it could use the additional layer of trust and transparency enabled by blockchain to improve the current internal reconciliation process of cash assistance.

### Results

Since partnering with WFP in 2023, HesabPay in Afghanistan has helped 49,000 people open digital accounts, increasing access to cash assistance while fostering financial inclusion.

This includes 20,600 women under the World Bank-supported Mother and Child Benefit Programme, a social safety net initiative designed to increase usage of health services for pregnant and breastfeeding women.

### Quote

“Investing in women means achieving a long and lasting multiplier effect on their families and communities. Women have a central role in social dynamics and are a source of social cohesion.”

—Alejandra Rivera-Stapper, Innovation and Market Development Lead, WFP Afghanistan

### Read

[Driving financial inclusion for women in Afghanistan: Cashless payments by HesabPay](#)



## 3.4 Innovative Finance

The Innovative Finance and Venture Launchpad enlarges the sources and scope of funding for innovations disrupting hunger. The team develops and implements catalytic mechanisms to attract

and blend different sources of capital, and to grow the lifetime value of each dollar, euro or renminbi WFP receives.

New forms of sustainable financing that pool capital from public donors, philanthropies, development banks and impact investors are crucial to closing the humanitarian and development funding gap and achieving social impact at scale.

The Innovative Finance and Venture Launchpad team leads innovative financing solutions across a broad range of activities. In 2025, it collaborated with key donors and partners, such as the European Union Council working party on Humanitarian Aid and Food Aid (COHAFA). It developed the WFP food security catastrophe bond in collaboration with the World Bank, scaling the venture investing portfolio via WFP Innovation Bridge and promoting SheCan and the Access to Inclusive Finance programme.

These solutions are built in close collaboration with other innovative finance and programmatic teams across WFP, leveraging expertise from leading external stakeholders across the humanitarian sector and the larger impact investment ecosystem.

## [SheCan](#)

**Thematic area:** Food systems and smallholder farmers, Resilience and sustainable livelihoods

**Cross-cutting themes:** Gender, Climate action

**Active in:** Bolivia, Cameroon, Ecuador, Iraq, Malawi, Peru, Rwanda, Zambia

**Internal / External innovation:** Internal



*SheCan participants in Rwanda. | Photo: WFP*

## Innovation overview

SheCan helps women and their communities access the financial products and services they need to thrive. By enhancing their livelihoods and resilience through access to inclusive finance, SheCan reduces future humanitarian needs. It connects people who are often excluded from the formal financial system - especially smallholder farmers and micro-entrepreneurs - with banks and financial institutions, creating real, lasting ways to exit grant reliance and escape poverty.

## Accelerator role

The WFP Innovation Accelerator supports WFP country offices with blended-finance technical assistance, selecting financial service providers, conducting due diligence and ensuring effective reporting. It provides financial expertise, mobilizes and catalyzes capital and designs customized financial inclusion programmes. The team also delivers hands-on project management support, including drafting contracts and facilitating global network access and co-funding opportunities.

## Results

Across Rwanda, Peru, Zambia, Malawi, Cameroon and Iraq, SheCan has provided 121,000 people, 63 percent of whom are women, with microloans or financial literacy support with an impressively low default rate of just 0.01 percent. This has advanced the financial inclusion of over 700,000 people.

## Quote

"I am immensely proud of the remarkable successes of our innovative work with the Innovation Accelerator through the SheCan project. The pilot project met its initial targets and exceeded them, empowering smallholder farmers, especially women, with access to digital financial services and fostering economic resilience."

—Cissy Byenkya Kabasuga, Country Director, WFP Zambia

## Lessons learned

Understanding local contexts and tailoring solutions to each community was critical for SheCan's expansion and effective financial inclusion. In each new context, feasibility assessments ensured that SheCan's strategy fit local financial systems, addressed the specific barriers people faced and matched their needs and preferences for financial products. Collaborations with governments, NGOs and private funders also improved SheCan's long-term sustainability and embeddedness in national financial inclusion strategies.

## WFP Food Security Catastrophe Bond

**Thematic area:** Emergency preparedness and response

**Cross-cutting themes:** Climate action

**Active in:** Sub-Saharan Africa (forthcoming)

**Internal / External innovation:** Internal



Discussion between communities and participants at a training in Niger. | Photo: WFP

### Innovation overview

A catastrophe bond is a financial instrument that transfers the risk of catastrophic events from insured parties to financial markets. Developed in collaboration with the World Bank and with funding from the Government of Luxembourg, this bond aims to provide up to USD 100 million in coverage. If triggered, it would deliver immediate funding for emergency drought response in Sub-Saharan Africa. The financial protection is targeted to commence in 2026-2027.

### Accelerator role

The WFP Innovation Accelerator is spearheading this initiative in collaboration with the WFP Climate and Resilience Service and the WFP Chief Financial Officer Division, in collaboration with the World Bank (IBRD), selected lead managers and external advisors.

### Results

The WFP Food Security Catastrophe Bond mechanism is targeting financial protection for up to 2.5 million people over a three-year implementation period.

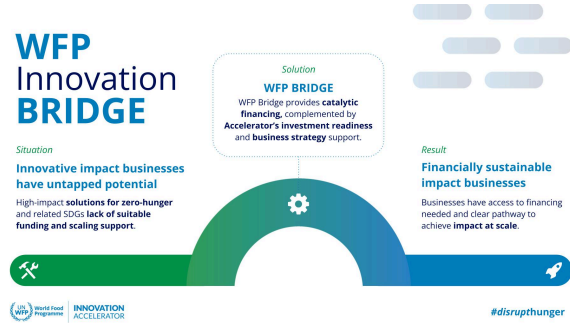
## [WFP Innovation Bridge](#)

**Thematic area:** All (cross-cutting)

**Cross-cutting themes:** Gender, Climate action

**Active in:** Global

**Internal / External innovation:** Internal



The financing behind WFP Innovation BRIDGE helps innovative impact businesses become financially sustainable. | Photo: WFP

### Innovation overview

The WFP Innovation BRIDGE leverages the complementary mandates of two UN entities, WFP and UNCDF, to scale WFP-supported innovative impact businesses. It provides them with concessional loans and guarantees and catalyses funding from private sector investor partners by de-risking their investments.

### Accelerator role

The WFP Innovation Accelerator's Innovative Finance and Venture Launchpad team works with innovation managers across WFP to source innovative impact businesses that may require financing support from WFP Innovation BRIDGE. If needed, the team provides investment readiness and business strategy support. The WFP Innovation Accelerator then works with the prospect to

prepare an investment proposal for UNCDF, as facility manager, to decide on the investment, reflecting both the needs of the business and target populations and aligning with WFP's strategic objectives.

### Results

In 2025, WFP Innovation BRIDGE has increased the funding available for investments in innovative impact businesses that will be deployed in the upcoming years. The first investments from the expanded facility are expected in early 2026, providing market linkages and generating income increases to more than 100,000 smallholder farmers.

### Lessons learned

The value of WFP Innovation BRIDGE perceived by the pipeline businesses goes beyond the financing received. Businesses appreciate the longer-term nature of the relationship and ability to connect with WFP's programmes and operations on the ground.



## 3.5 SDGx Acceleration

SDGx Acceleration envisions an integrated humanitarian and development innovation system that works as one, driving cross-sector collaboration to improve the lives of people affected by crises and strengthening long-term resilience in vulnerable communities. As WFP's dedicated interagency unit working with external ventures, SDGx amplifies and enables the collective impact of WFP, its

partners and the impact ecosystem via acceleration platforms, on-demand innovation services and co-creation opportunities.

In 2025, the first cohort of Humanitarian Innovation Accelerator (HIA), supported by the Government of Luxembourg, concluded with ventures reaching over 419,000 people and raising more than USD 2 million in additional funding. Eight new ventures also joined the HIA platform in 2025, continuing its scaling success. The programme convened innovation teams from both cohorts and other initiatives, partners and the HIA ecosystem for the HIA Humanitarian Days and Pitch Event in Luxembourg, to align innovation priorities and create collaboration opportunities across ventures and partners.

HIA and Hiper, a new initiative with UNHRD, SDGx further advanced SDGx's flexible platform model, enabling like-minded partners to engage in ways that help impactful innovations progress on their path to scale.

The SDGx Community also grew to 360 members in 2025 and expanded its reach to the WFP Innovation Network. The Community hosted monthly online events featuring expert workshops and venture-sharing circles, drawing more than 210 innovators to exchange knowledge and learn from external specialists and peers.

In 2025, SDGx's portfolio of external ventures and alumni reached 23.2 million individuals and generated a combined USD 3.7 million in savings for the humanitarian and development ecosystem.

## Amini

**Thematic area:** Smallholder farmers

**Cross-cutting themes:** Climate action

**Active in:** Côte d'Ivoire, Kenya

**External innovation:** External



*A group of cocoa farmers in the Capressa farmers cooperative in Abengourou, Côte d'Ivoire, shared their insights on the cocoa value chain with WFP and Amini during a focus group for Amini to further adapt and contextualize its solution. | Photo: WFP/Beness*

Photography

### Innovation overview

Climate change threatens agricultural supply chains, especially first-mile farmers who struggle with livelihood stability and climate risk management. Amini provides critical data on crops, soil and weather, helping farmers adapt and strengthen supply chains for consumer-packaged goods companies. By scaling data aggregation across regions, the female-founded enterprise enhances supply chains and global food security, particularly in Africa.

### Accelerator role

Through the Kofi Annan Award for Innovation in Africa, Amini received funding, coaching and mentorship to launch their operations in the cocoa value chain in Côte d'Ivoire. In 2025, as part of their sprint programme, the WFP Innovation Accelerator assisted the local Amini team through facilitated focus groups with cocoa producers to learn how to better deliver Amini's data to local producers and expand their network of potential farmer cooperatives.

### Results

Amini is providing regular insights to 14,000 farmers in Côte d'Ivoire, which supports 38,612 individuals who are dependent on the farmers' incomes. Across all of its operational countries as a private entity, Amini has provided similar data for 300,000 smallholder farmers through various institutions and through government collaborations. From

pilot to present day Amini has increased its geographical coverage to 25 countries.

### Quote

"Across Africa, our vision is to enable data sovereignty and climate adaptation through scalable, AI-powered infrastructure that empowers local actors, from cooperatives to policymakers."

—Amadou Kamagate, Food Security Programme Manager, Amini

### Lessons learned

Working through trusted community institutions, such as cocoa farmer cooperatives in Abengorou, Côte d'Ivoire, helps reach local producers with new innovations and approaches, as many look to cooperatives for reliable, accurate information and guidance. Leveraging these systems improved Amini's uptake in the local value chain.

### Read

[Bridging the data gap: Amini's solution for farmers](#)

### ANKA AgriGrid

**Thematic area:** Smallholder farmers

**Key for any potential cross-cutting themes:**

Climate action, Gender

**Active in:** Madagascar

**Internal / External innovation:** External



Mahonette, President of the Women Association in Madagascar. | Photo: ANKA AgriGrid

### Innovation overview

ANKA AgriGrid seeks to implement the AgriGrid© model in Ambohimahavelona, a village in southern Madagascar, to power a groundnut oil processing facility operated by a local women's association. Initially planned for 100 farmers, the initiative has now engaged over 300 farmers within a cooperative. While the first planting season faced yield challenges due to timing, it successfully fortified farmer organization, ensured high-quality production and provided valuable training to enhance future harvests.

### Accelerator role

During their sprint with the Agricultural Innovation for Climate Resilience programme, ANKA launched its first pilot, installing a groundnut oil processing facility that will be powered by ANKA's existing mini-grid and operated by a local women's lead cooperative.

### Results

324 farming cooperative members have used the AgriGrid model, 93 percent of whom are female farmers. ANKA has successfully encouraged farmers to form a cooperative and mobilized them to plant groundnuts and maize. With support throughout the value chain, farmers received quality seeds and continuous training, which will improve their crops in the long term. With a successful pilot phase, organizations like the European Union and the German International Cooperation Society (GIZ) have shown interest in testing the AgriGrid model in other locations.

### Quote

"AgriGrid© has helped us unite as a cooperative and improve our groundnut farming. Before, we worked alone with low yields - now, we're more organized and use better techniques. Soon, we'll process our groundnuts into oil and sell it locally, increasing our income and independence."  
—Mahonette, President of the Women Association in Madagascar

### Lessons learned

Agribusiness is challenging, as timing plays a critical role - missing the right planting season can significantly impact the solution. Farmers' trust comes from ANKA's presence and

continuous support throughout the value chain. They need guidance to become drivers of development and change. ANKA hopes this model will be replicated in other villages.

## **aQysta**

**Thematic area:** Smallholder farmers

**Cross-cutting themes:** Climate action

**Active in:** Malawi

**External innovation:** External



*Smallholder farmers that collaborated with aQysta and supplied them with raw materials. | Photo: aQysta*

### **Innovation overview**

aQysta is Malawi’s first 100-percent-solar-powered agro-processing facility, implemented in a profit-sharing service model for smallholder farmers in Malawi. It aims to increase income of Malawian smallholder farmers and reduce post harvest losses.

### **Accelerator role**

aQysta was a sprint venture in the Agricultural Innovation for Climate Resilience Accelerator (AICR), through which it has received financing and coaching to scale their existing fixed

solar-powered facility to process 400 metric tons of groundnuts and dried fruit while onboarding at least 4,000 farmers.

### **Results**

aQysta has onboarded 4,350 farmers with the Grown Enterprise Resource Planning app to access the processing facility. With its original facility, it processed 214 metric tons of groundnuts. The team has now moved from a 150 square meter processing facility to a 800 square meter facility, processing more than triple the amount of ground nuts and dried fruit. They also built a pipeline with ten serious leads and a demand of over 100 tonnes of dried fruits.

### **Lessons learned**

Successful adoption of climate-resilient irrigation solutions depends not only on technology, but on community engagement and contextual adaptation. Delivering training in local languages and partnering with trusted community leaders significantly improved uptake and long-term use.

## **BEBEQUE Limited**

**Thematic area:** Smallholder farmers

**Cross-cutting themes:** Climate action

**Active in:** Nigeria

**External innovation:** External



Coupling and quality testing of rice paddy parboiling and dryer system in Nigeria. | Photo: BEBEQUE

### Innovation overview

BEBEQUE aims to sustainably generate heat and electricity from agri-residues to support smallholder farmers in rural Nigeria. Through their sprint, Bebeque implemented a 100kVA rice husk-driven gasification system in Ebonyi state, Nigeria. They strive to generate clean electricity and heat for rice farmers to mitigate climate and health challenges, establish an out-grower scheme to enhance rice production and generate revenue to ensure project sustainability.

### Accelerator role

Bebeque was a sprint venture in the Agricultural Innovation for Climate Resilience Accelerator (AICR) through which the team received funding and coaching support to pilot and scale the solution and ultimately generate revenue and contribute to the sustainability of the business.

### Results

7,939 individuals engaged in Bebeque's bioenergy value chain, 4,000 of whom are smallholder rice farmers out-grower schemes. The initiative averted an estimated 765 metric tons of CO<sub>2</sub> and generated 150 kVA/day clean electricity and heat to support rice farmers.

### BleagLee

**Thematic area:** Coalitions and Solutions for the SDGs

**Active in:** Cameroon, Senegal

**Internal / External innovation:** External

### Innovation overview

BleagLee's AI-powered drone software detects waste-blocking drainage channels to reduce flood risks. Its digital platform offers on-demand recycling and waste disposal services for individuals and businesses, improving sustainability and public health. The platform also provides municipalities with data to enhance waste management and decision-making.

### Accelerator role

The WFP Innovation Accelerator has facilitated networking and connections that have allowed BleagLee to engage and enter partnerships with potential investors and partners, reinforcing its overall market presence and supporting its continued growth. In addition, BleagLee has been able to make further improvements to its AI technology, which is expected to improve waste identification and collection efficiency by 20 percent.

## Results

Bleaglee has reached 6,309 people through its waste management innovation. 2,785 of those are directly participating in Bleaglee's activities, such as waste collection programmes, waste management training and benefiting from flood risk reduction initiatives. Local communities are embracing cleaner neighborhoods, fewer floods and better living conditions thanks to the waste collection efforts. It is estimated that Bleaglee has saved other humanitarian and development actors USD 1.5 million by reducing staff time spent on manual waste tracking, optimizing waste collection logistics and reducing spending on flood emergencies as they become less frequent and severe with proper waste management.

## Lessons learned

Diversifying its partnerships helped BleagLee retain its operations and sustainability when an emergency caused its main partner to shift its priorities.

## ChipChip

**Thematic area:** Supply chain

**Cross-cutting themes:** N/A

**Active in:** Ethiopia

**Internal / External:** External



*ChipChip's storage warehouse in Addis Ababa, Ethiopia, purchases produce from smallholder farmers and cooperatives to sell with verified buyers, ensuring transparent pricing and reducing food loss. | Photo: WFP*

## Innovation overview

ChipChip is a digital B2B agricultural marketplace that connects smallholder farmers and cooperatives directly with verified buyers, input suppliers and financial service providers. Through its digital platform, farmers gain access to transparent pricing and embedded formal financial products. Its model integrates traceability and

performance data, building trust between producers and buyers and reducing food loss. By leveraging these technologies, ChipChip improves market access and enhances farmers' resilience to economic and climate shocks.

### Accelerator role

Through the Kofi Annan Award for Innovation in Africa, the WFP Innovation Accelerator supported ChipChip to scale their operations in Ethiopia and solidify its monitoring and evaluation metrics. Additionally, the WFP Innovation Accelerator connected ChipChip to WFP Ethiopia to explore collaboration and to impact investors in Europe to aid its fundraising efforts.

### Results

Since launching their app in January 2024, ChipChip has quickly gained traction and is scaling in Ethiopia, having reached 1.5 million users, with 600,000 all-time customers and 250,000 monthly recurring customers, more than 60 percent who are women. They have onboard and sourced agri-foods from 600 farmers and delivered 22.6 million kilograms of food at 25 percent lower prices. They have added four more local languages (Oromiffa, Tigrigna, Somali and Sidamigna) with a combined 54.8 million native tongue speakers and employed 366 workers, 60 percent of them youth and more than 50 percent women.

### Quote

"By connecting farmers directly to markets and finance, we are building a more transparent, resilient and profitable agricultural ecosystem for Ethiopia's smallholders." —*Amir Redwan, Co-founder ChipChip*

### Lessons learned

Leveraging trusted local aggregators to implement innovative solutions supported by digital tools provides a lean, scalable alternative to building centralized, asset-heavy distribution systems. A decentralized, community-led delivery approach can reduce operational costs, improve trust and coordination and accelerate market penetration, especially in resource-constrained environments.

### [EcoRich Solutions Limited](#)

**Thematic area:** Smallholder farmers

**Cross-cutting themes:** Climate action

**Active in:** Kenya

**External innovation:** External



EcoRich Solutions founder Joyce Rugano (right), with a farmer who uses EcoRich's organic fertilizer produced from harmful waste. | Photo: Ecorich

### Innovation overview

Ecorich's flagship product is an AI waste decomposer device, WasteBot, that converts otherwise harmful waste into affordable organic fertilizer. Through AI-enabled recycling and robotics, the recycling technology releases required microorganisms into the waste inside the bin, which converts the waste into organic fertilizer with 95 percent accuracy. It displays the fertilizer content and nutrients composition. WasteBot also contributes to climate change mitigation by reducing the harmful impacts of mismanaged organic waste.

### Accelerator role

Ecorich was a sprint venture in the Agricultural Innovation for Climate resilience Accelerator (AICR). During its sprint, the programme partners supported EcoRich in integrating a gender lens into their products and services and helped them design inclusive, equitable solutions that address diverse gender needs and expand their market impact. They also worked to expand WasteBot's capacity from 50 to 600 kilograms, adding cost-effective solar components to reduce energy costs and establish new recycling centers across Nairobi's informal urban areas.

### Results

6,989 people in Kenya have used EcoRich's wastebot to collect and process waste,

including many smallholder farmers who can then use the organic fertilizer. 71 percent of EcoRich's users are women. The smart processing of waste has averted an estimated 538 metric tons of CO<sub>2</sub> and the use of fertilizer has yielded an estimated 299,000 kg of additional harvest. More than 2,000 women and youth have been employed as waste processors and fertilizer distributors.

### Quote

"Before Ecorich, my crops were struggling. Now, thanks to their affordable organic fertilizer, they're thriving! I'm producing more, earning more and my soil is healthier."

—David, WasteBot user

### Lessons learned

Decentralizing operations, including diverse market locations and building strong communications channels ensures business continuity amidst disruptions such as political instability. This flexibility enables quick decision-making and reduces down time.

### Read

[Five Lessons we can all learn from one woman's journey from waste to resilience in African agriculture](#)

## EnergyAssured (SheFarmsGreen)

**Thematic area:** Smallholder farmers

**Cross-cutting themes:** Climate action, Gender

**Active in:** Nigeria

**External innovation:** External



A group of female smallholder farmers who received training on solar powered pumps from EnergyAssured. | Photo: EnergyAssured

### Innovation overview

EnergyAssured provides women smallholder farmers with rental services of mobile solar pumps and access to agricultural resources for their all year round farming activities. These services are offered at a flexible payment option to increase accessibility to the technology and ensure women farmers are empowered to use the technology.

### Accelerator role

EnergyAssured was a sprint venture in the Agricultural Innovation for Climate resilience Accelerator (AICR) through which the team received support through financing and mentoring to scale up their training offering, sales and awareness campaigns across Nigeria. During their sprint, EnergyAssured aimed to onboard 10,000 women farmers to access their solar powered pumps and provide relevant technical support and market

access to ensure profitability and sustainability.

### Results

EnergyAssured acquired and fabricated 50 solar pump systems enabling them to reach 34,926 individuals. The solar pumps have helped avert an estimated 1.3 million metric tons of carbon emissions through the use of solar power. They aim to reach a total of 10,000 women directly and 100,000 indirectly through this pilot.

### Lessons learned

Gender-inclusive design via tailored financing, training and outreach is critical for women’s adoption of the innovation, which helps them ensure profitability and improve food security for themselves and their communities.

## Far-Reaching Integrated Delivery Programme (FaRID)

**Thematic area:** Coalitions and solutions for the SDGs

**Cross-cutting themes:** N/A

**Active in:** Not yet active

**Internal / External innovation:** External



*A health service worker delivering health services in an inaccessible region of Somalia following FaRID's model. | Photo: Core Group Partners Project/Muktar Mohamud Hassan*

## Innovation overview

The Far-Reaching Integrated Delivery (FaRID) programme aims to reach children and vulnerable groups in access-compromised areas with vaccines and other survival interventions through an integrated health service delivery model that includes fixed health sites, mobile health camps and outreach by bringing together non-traditional Global Polio Eradication Initiative actors.

Funded by the Gates Foundation, this programme is a collaboration between the WFP Innovation Accelerator, Core Group Partners Project, Save the Children, Humanitarian Dialogue, Health-E-Net, PATH, HISP Tanzania, GAVI, DEH, ZamZam Foundation, Wardi Relief, Vision Corps Initiative, the University of Geneva, the Somalia Ministry of Health and McKing Consulting.

## Accelerator role

The WFP Innovation Accelerator facilitated and coordinated the collaboration between the partners to drive FaRID's programme design. It delivered three workshops in 2025, two in Somalia and one in Kenya, to design an advocacy process to secure sustainable funding beyond FaRID's current grant and to work closely with the Ministry of Health Somalia to improve local ownership and outcomes. The Accelerator also expanded its

role into managing the monitoring and evaluation process for the programme, which includes co-creating a unified theory of change and standardised metrics across all partners for clarity in reporting and narrative.

## Results

Since its inception in 2023, FaRID has delivered over 18,000 health camps and established 35 fixed sites in 20 districts in Somalia. Through these, FaRID has provided over 2.1 million healthcare consultations to under-served and previously inaccessible populations in the following outputs: 637,000 vaccination touchpoints, 317,000 maternal health services, 771,000 general medicine support and 436,000 nutrition services. As a result, over 173,000 zero-dose children received their first essential vaccinations and over 105,000 under-vaccinated children are now fully vaccinated with PENTA, OPV and BCG, protecting them against tuberculosis, diphtheria, pertussis, tetanus, Hepatitis B, diseases caused by Hib bacteria and polio.

## Lessons learned

Working together to develop advocacy materials, programme narrative and a unified advocacy approach is critical to ensuring donors better understand the programme and the direct impact their support could have. This has also led us to better refine standardised metrics and way of reporting across partners.

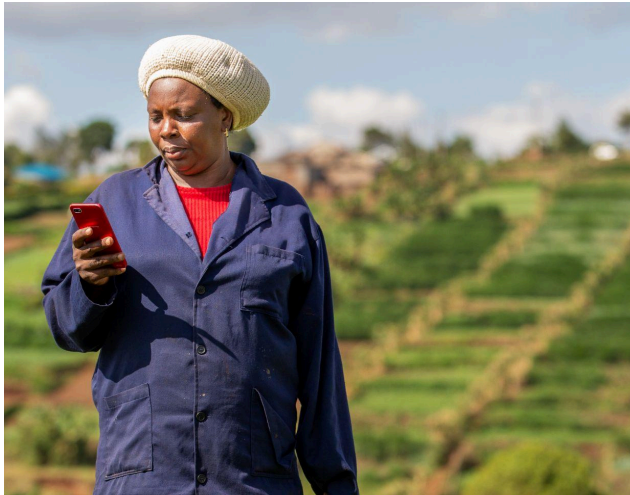
## Farmer Lifeline Technologies

**Thematic area:** Smallholder farmers

**Cross-cutting themes:** Climate action

**Active in:** Kenya

**External innovation:** External



Farmer Mrs Wanjiku using Farmer Lifeline Technology. | Photo: Farmer Lifeline

### Innovation overview

Farmer Lifeline leverages AI and machine learning to help marginalized smallholder farmers in arid and semi-arid land areas detect crop pests and diseases in time to make informed decisions. These decisions help farmers increase their yield and thus food security for their families and community.

### Accelerator role

During their sprint with the Agricultural Innovation for Climate Resilience programme, Farmer Lifeline aimed to expand their reach to farmers, with 60 percent of them being women and 45 percent from arid and semi-arid land areas. The funding, coaching

and capacity building provided by the programme supported this expansion and the development of a new, more powerful proprietary solar-power crop and pest detection device.

### Results

14,600 farmers in Kenya are using Farmer Lifeline to protect their crops from pests and diseases, securing extra incomes and increasing crop yields. It is estimated that 51,210 individuals have therefore lived in households with increased income.

### Lessons learned

Empowering local champions and tailoring training increases adoption and community engagement. Strong digital infrastructure is crucial for scaling and evidence-based decisions and incorporating user feedback improves product usability and effectiveness.

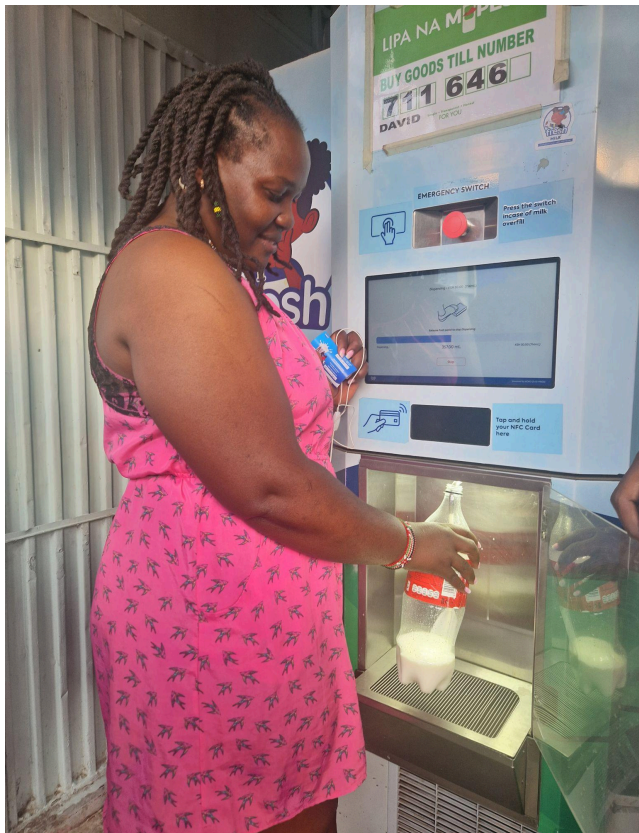
## FRESH Networks

**Thematic area:** Supply chain

**Cross-cutting themes:** N/A

**Active in:** Kenya

**Internal / External:** External



A woman buying milk from a FRESH Networks Machine. | Photo: FRESH Networks

### Innovation overview

FRESH Networks offers low-income urban Kenyans safe milk at affordable prices via a network of smart milk dispensers supported by an Internet of Things-enabled supply chain. Customers can buy any amount of milk using a digital token system. All inventory, payment and logistics data is tracked via the FRESH Networks cloud system, maximizing quality,

availability and affordability for consumers and efficiency and reach for dairies.

### Accelerator role

Fresh Networks is a sprint project in the Kofi Annan Award for Innovation in Africa, through which the WFP Innovation Accelerator has helped it verify its monitoring, evaluation and learning framework and validate their human-centred design approach. This included providing expert guidance on data verification, planning focus groups, impact measurement and user feedback integration to ensure their solutions were both effective and user-driven.

### Results

In 2025, over 600 individuals are consistently buying milk from FRESH Networks' smart milk dispensers. In 2025 as it continued its pilot and began to scale, it reached 5,909 people, who are now accessing safer milk and, consequently, reducing their risk of disease.

### Quote

"FRESH milk is clean, healthy and the price is good. I have children and grandchildren. In the past, when I went to buy milk for my children, their stomachs would dilate, they would vomit or they would cry because of their stomachs. The milk was unclean. When it comes to FRESH milk, I do not go to the hospital as often."

—Milka Wanjini Mungai, a FRESH Networks customer

“It is bringing us to another level of digital; we are using smart phones to buy. The children appreciate the digital and even older people and myself appreciate it, too.”

—David Wainaina Mwariama, FRESH Networks vendor

### Lessons learned

When operating with an asset-heavy model, it is critical to develop a financing strategy with a long monthly runway period to ensure all components are available for implementation.

### Read

[How one start-up is helping more Kenyans access safe, fresh milk](#)

## Jangala

**Thematic area:** Emergency response

**Cross-cutting themes:** N/A

**Active in:** Kenya, Sudan

**Internal / External:** External



Jangala’s Big Box is designed to provide high-speed internet connectivity during humanitarian crises. | Photo: WFP/Benjamin Härer

### Innovation overview

Jangala’s Big Box is a plug-and-play internet solution designed for humanitarian crises, delivering high-speed connectivity to thousands in remote, disaster-affected or underserved areas. By eliminating the need for costly installation, configuration and maintenance, Big Box’s lightweight, briefcase-sized design substantially lowers the

barriers to deploying internet. In partnership with International Organization for Migration (IOM) Kenya, Jangala has supported communities displaced by flooding and other challenges across the country since 2024.

### Accelerator role

As a result of Jangala's sprint with the Humanitarian Innovation Accelerator, Jangala implemented its sprint project in Kenya and six humanitarian and development organizations integrated Jangala into their operations and received Big Box technology, including OSDA, VSF Germany, World Vision International, Peace Winds Japan and the Government of Kenya's refugee services department. With support from the WFP Innovation Accelerator, Jangala has navigated customs challenges, received ongoing coaching on partnerships and scaling strategies and connected with other ventures in the SDGx community to deploy Big Boxes in other countries. Jangala was also accepted into the Emergency Telecommunications Cluster Partner Network.

### Results

47,952 people have been connected to Wi-Fi via Big Box by Jangala, especially in challenges contexts and emergency response. Over 64 Big Box units have been deployed, connecting schools, community resilience projects and emergency response teams to Wi-Fi, enabling clearer and faster communications amongst support agencies and communities.

### Lessons learned

Understanding the use cases for actors implementing your work should inform your future scaling strategies. In Jangala's case, they learned the majority of Big Boxes were used for humanitarian staff communications rather than community-based communications, which will inform their future emergency response deployments.

## Mechro Limited

**Thematic area:** Smallholder farmers

**Cross-cutting themes:** Climate action

**Active in:** Malawi

**External innovation:** External



Esnert Maliko - Nachiperi Irrigation Scheme. | Photo: Mechro

### Innovation overview

Mechro produces and sells irrigation tools that monitor soil's moisture and nutrients using a simple colour-based system, making data more accessible and easy to action for farmers, especially for those who are illiterate or otherwise struggle with advanced

technologies. By using this toolset, smallholder farmers can assess soil water and nutrient levels, make informed decisions on irrigation and irrigate their crops efficiently for better yields. Additionally, the tools facilitate data collection, transmission to online servers and generate color patterns for government and stakeholders' evaluation, aiding in the development and intervention planning for irrigation schemes.

### Accelerator role

Mechro participated as a Sprint venture in the Agricultural Innovation for Climate Resilience Accelerator (AICR), where it received catalytic funding and tailored coaching to increase the production and distribution of the colour-guided irrigation tools. They also worked to increase their use among smallholder farmers in Malawi and distribute tools through government irrigation schemes, cooperatives and partners to reach more smallholder farmers.

### Results

In 2025, 340 farmers in Malawi were using Mechro's colour-based chameleon sensors. In user surveys, all users reported positive changes in the way they have been irrigating their crops, with benefits such as a reduction in irrigation frequency, water and time saving. Overall, improved irrigation led to over 113,015 kilograms of increased yield and an associated USD 479,000 in increased income.

### Lessons learned

Scaling climate-smart tools requires an institutionally-anchored market demand, with strong government commitment and clear procurement pathways—not farmer mobilization alone.

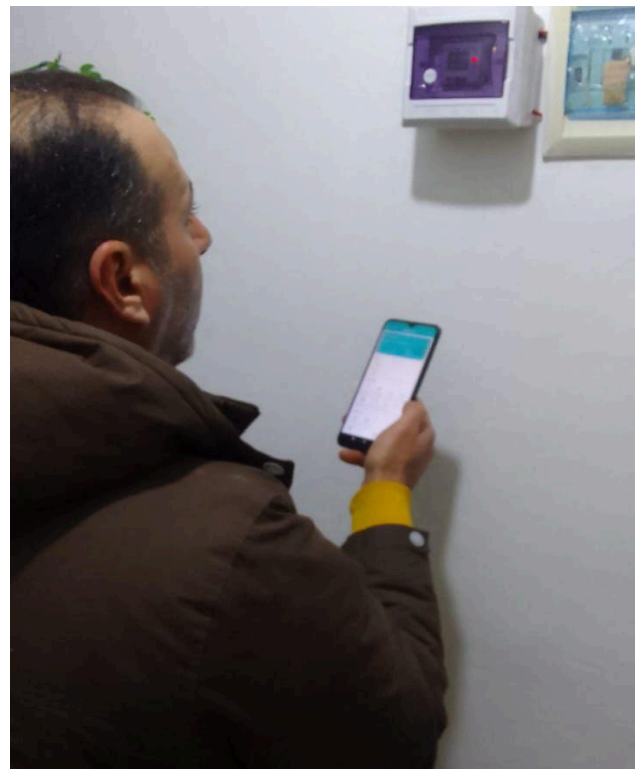
## Neurotech

**Thematic area:** Coalitions and solutions for the SDGs

**Cross-cutting themes:** N/A

**Active in:** Jordan

**Internal / External innovation:** External



Using Neurotech to monitor energy usage. | Photo: Neurotech

### Innovation overview

Neurotech is an energy monitoring and management solution that enables fair electricity distribution by leveraging machine learning. Notably, it provides a smart meter

capable of dynamically adjusting energy consumption limits while upholding humanitarian considerations.

**Accelerator role**

Through the Humanitarian Innovation Accelerator, the WFP Innovation Accelerator supported Neurotech by providing guidance on engagement strategies and facilitating connections with stakeholders. Additionally, the WFP Innovation Accelerator assisted in securing a memorandum of understanding with an important implementing partner, enabling Neurotech to establish a solid foundation for collaboration and effective project delivery.

**Results**

In just its first year of implementing NeuroTech’s smart energy monitoring device, 10,000 individuals now live in a household with NeuroTech smart meters, benefitting from reduced energy bills, more stable home environments and shared knowledge about energy conservation. 2,500 of those people are actively using the energy management platform.

**Quote**

"Before implementing the energy management system, we struggled with high electricity bills and inefficient power use. Now, we have complete visibility over our consumption and our monthly expenses have dropped significantly. The system helps us make smarter energy choices and feel more in control of our household budget."

—*Syrian refugee in the north of Jordan*

**Lesson learned**

Identifying key new use cases by receiving and analysing user feedback can help a solution be adapted to multiple settings and diverse customer segments.

**OPAL** 

**Thematic area:** Emergency response

**Cross-cutting themes:** N/A

**Active in:** Senegal

**Internal / External:** External

**Innovation overview**

OPAL is a privacy-preserving technology and governance system to share and analyse sensitive information safely and ethically for humanitarian action. Developed by the Data Pop Alliance, Open Algorithms for Humanitarian Action (OPAL4HA) safely leverages diverse, sensitive data sources to enhance preparedness, accelerate response and optimize resource allocation in Senegal. The platform provides analysis to governmental and non-governmental decision-makers, but also extends into coordination, incident monitoring, task tracking and real-time feedback to enhance impact management in specific areas such as population support, health and agriculture.

**Accelerator role**

As part of the Humanitarian Innovation Accelerator, OPAL for Humanitarian Action refined its strategy through an intensive innovation bootcamp, gained key

partnerships at a two-day in-person event in Luxembourg and received funding, coaching and mentorship throughout the 12-month sprint programme.

### Results

OPAL successfully developed a fully functional Minimum Viable Product (MVP), delivering a sophisticated platform that enables high-granularity flood analytics and AI-assisted data interaction. In addition, 13 strategic partnerships were established across government, civil society, academia and the private sector and with over USD 400,000 in complementary funding received to further develop and implement the solution.

### Lessons learned

The sprint taught the team to stay flexible as user needs, partnerships and data access shifted. A clear shared vision can help manage internal changes, while delays with external partners proved that strong partnerships and networks are invaluable for the implementation environment.

### [Opero](#)

**Thematic area:** Coalitions and solutions for the SDGs

**Cross-cutting themes:** N/A

**Active in:** Uganda

**Internal / External innovation:** External



*The Opero waste treatment system at work in Uganda. The system helps manage human waste safely and affordably at a community scale. | Photo: Opero*

### Innovation overview

Opero transforms human waste treatment in humanitarian settings via a safe, easy-to-deploy, robust and sustainable fecal waste treatment plant. It provides safe and affordable treatment and reuse or disposal options for fecal sludge at the community scale. Opero's technology uses anaerobic digestion and pasteurization technology to stabilize sludge and sanitize waste, reducing pathogens and producing nutrient-rich fertilizer that is safe to handle, dispose and use for agricultural purposes.

### Accelerator role

Through the Humanitarian Innovation Accelerator, the WFP Innovation Accelerator and its partners supported Opero in engaging with various stakeholders and helped secure a memorandum of understanding that was critical to launch Opero's pilot in Uganda's Kyangwali refugee settlement. Through its coaching and mentoring, the accelerator supported Opero in identifying relevant stakeholders to build a sustainable revenue model.

### Results

Opero's treatment plants have effectively treated waste for 150,000 people in the Kyangwali refugee camp in Uganda. The solution unlocked access to sanitation within the camp, reducing waste, risk of waterborne diseases and emptying costs.

### Lessons learned

Investing the time and resources in building partnerships and contextual understandings are particularly important in refugee camps, where there is often a complex network of stakeholders. Engaging these partners and ensuring community participation is key for uptake of new technologies and the transfer of ownership to local operations.

### Read

[Two ways innovation is improving access to clean water and sanitation for refugees in Uganda](#)

### Smartel Agri-tech

**Thematic area:** Smallholder farmers

**Cross-cutting themes:** Climate action

**Active in:** Nigeria, Rwanda

**External innovation:** External



Israel from Smartel Agri-Tech visiting the business of Peter Huisman, founder of Urban Greens. | Photo: Smartel Agri-Tech

### Innovation overview

Smartel is revolutionising food production in climate-arid areas with climate-smart hydroponic systems, empowering farmers and urban dwellers in Nigeria and Rwanda to grow fresh produce in any location. They utilize Internet-of-Things-enabled devices and sensors in the hydroponics units to monitor water usage, nutrient levels and plant health

in real time, which has helped reduce water waste and improve yields. Smartel's new pay-as-you-go model offers a 70/30 revenue sharing system to remove upfront costs for low-income communities, accelerating adoption for farmers and cooperatives. After initial success, the model is now being standardized into a scalable financial structure.

### Accelerator role

Smartel Agri-Tech was a sprint participant of the Agricultural Innovation for Climate Resilience programme, through which Smartel received financing, facilitation and mentoring support. The WFP Innovation Accelerator supported Smartel in developing their user assessment and go-to market strategy when expanding their company into Rwanda as part of their sprint plan. It also supported the development of new innovative financing methods and partnership opportunities.

### Results

3,000 people are using Smartel Agri-Tech's hydroponic and irrigation devices, 65 percent of whom are women. Across those individuals' households, Smartel Agri-Tech is reaching 5,150 people. It is estimated that Smartel Agri-Tech's users have produced 1.476 million kilograms of additional produce thanks to the solution.

### Lessons learned

Early engagement with farmer cooperatives accelerates adoption. Establishing training programmes with them increases farmer

confidence and system uptake.

### Speetar

**Thematic area:** Coalitions and solutions for the SDGs

**Cross-cutting themes:** Gender

**Active in:** Libya

**Internal / External:** External



*Speetar's digital platform provides affordable healthcare solutions that saves time for providers and patients in conflict-affected communities. | Photo: Speetar*

### Innovation overview

Speetar is a patient-centred, digital platform providing affordable healthcare to conflicted-affected communities in Libya by connecting people to culturally and linguistically matched health specialists. The built-in healthcare management system

provides cloud-based electronic medical recording, doctor-patient scheduling, real-time identity verification, billing and video conferencing, all in one end-to-end solution.

### Accelerator role

Through the Humanitarian Innovation Accelerator Programme, the WFP Innovation Accelerator supported Speetar in advancing its women's health offerings by focusing on maternal health for conflict-affected communities. This included refining their products and services and piloting Speetar's solutions in Somalia in collaboration with the Hagarla Institute.

### Results

Speetar provided affordable healthcare to 110,085 people in 2025, 63 percent of whom are women. Many users were able to access services in under one hour and overall patients waited 30 percent less time in clinics and spent less time traveling for consultations. 79 percent of users surveyed reported improved health outcomes after using Speetar's services.

### Lessons learned

Scalable systems drive growth. As operations expand, establishing streamlined processes for medication delivery and resource management is essential to maintain efficiency and service quality.

## Thur Biotech

**Thematic area:** Smallholder farmers

**Cross-cutting themes:** Climate action

**Active in:** Ethiopia

**External innovation:** External



*A farmer tending to land using Thur Biotech's eco-friendly biofertilizers. | Photo: Thur Biotech*

### Innovation overview

Thur Biotech develops highly effective, low-cost, eco-friendly biofertilizers that not only boost crop yields but also preserve soil health. By increasing resilience to drought and improving yields by 20-30 percent, it empowers smallholder farmers and enhances food security. Collaborating with partners, Thur Biotech has successfully tested its products in high-risk field locations and is now scaling. The innovation aligns with WFP's

mission by reducing hunger, empowering smallholder farmers, improving nutrition, strengthening food systems and promoting sustainable soil health.

### Accelerator role

Thur Biotech received funding from WFP as well as acceleration support in terms of coaching throughout the Agricultural Innovation for Climate Resilience programme to expand production capacity and conduct demonstrations in new locations. They aimed to reach 10,000 smallholder farmers and enable 30 landlord women to become commercial farmers.

### Results

Thur Biotech greatly exceeded their targets, reaching 59,462 smallholder farmers in Ethiopia in 2025, saving them over USD 3.1 million and enabling 216,000 people to live in higher-income homes compared to before using Thur Biotech. It has also averted more than 535,000 metric tons of CO2 emissions by using bio-fertilizers and protecting soil health.

### Quote

“The Agricultural Innovation for Climate Resilience programme opened the way to conversations with major organisations and potential partners. These partnerships gave us resources, networks and validation. We are deeply thankful to WFP, AICR and our partners for opening doors and standing with us through challenges. We are proud that our journey shows how startups can lead change.”

—Samson Alemu, Thur Biotech cofounder and CEO

### Lessons learned

Building and scaling supply chains in Africa requires different models than in mature markets. The same resources may not be available to build out asset-heavy solutions and instability like currency fluctuations, like the Ethiopian Birr devaluing 50 percent during their sprint can greatly affect scaling plans and expenditures.

### Read

[Leading change: Lessons from Thur Biotech’s trailblazing path to resilient, sustainable agriculture](#)

### [Urban Greens Ltd](#)

**Thematic area:** Smallholder farmers

**Cross-cutting themes:** Climate action

**Active in:** Uganda

**External innovation:** External



Urban Greens Engineer Jjuuko Abbey gives a tour of the decentralized, soil-less, micro-farm concept based on aquaponics. | Photo: WFP/Silvia Sironi

### Innovation overview

In Uganda, a rapidly growing population is putting pressure on natural resources and urban residents are relying more and more on urban farming for food security. However urban farming solutions generally use unsustainable soil-based practices. In contrast, Urban Greens has developed a decentralized, soil-less micro-farm solution based on aquaponics and hydroponics. The solution offers a standardized aquaponics micro-farm with solar power back-up and Internet of Things to reliably grow produce and farm fish in urban spaces.

### Accelerator role

Urban Greens was part of the Agricultural Innovation for Climate Resilience programme. Through this they received a grant of USD 150,000, as well as a dedicated innovation coach, mentoring and access to local and global ecosystems to support them to develop their minimum viable product and launch a pilot with 21 units in Kampala. The WFP Innovation Accelerator provided support in evaluating key assumptions about how women engage with the Urban Greens system, learning that women are key decision makers but often work collaboratively with their family members and they may not have direct control over newly generated income. This led Urban Greens to change their approach to their business model to be more inclusive to the entire household and put in place a plan to develop training modules to enable women to manage their new income streams.

### Results

Urban Greens successfully installed three aquaponic and 18 hydroponic systems. Four of these systems have power back-up and remote monitoring. These operating pilots serve 103 individuals. The proposed aquaponic systems are capable of generating 15 kilograms of fish and 200 plants or equivalent every month.

### Lessons learned

Building formal partnerships with trusted community institutions like women’s groups can support better reach than a traditional marketing approach, as it supports that your solution is not only designed for women but delivered through them.

### [WaterKit Wallet](#)

**Thematic area:** Coalitions and solutions for the SDGs

**Cross-cutting themes:** N/A

**Active in:** Uganda

**Internal / External innovation:** External



*Refugees in Bidibidi settlement in Uganda can purchase water, sanitation and energy products at affordable prices*

via zero percent interest loans using WaterKit Wallet. |  
Photo: WaterKit

### Innovation overview

WaterKit Wallet is a mobile money-powered credit solution that enables community members to save and access credit for water, sanitation and hygiene (WASH) and energy products through local village stores, often at zero percent interest, providing sustainable financing for clean water access. It also allows donors to contribute directly to users' wallets and provides an investment platform for impact investors to support social good.

### Accelerator role

The WFP Innovation Accelerator supported WaterKit Wallet in developing a plan and strategy for operations within the Bidibidi refugee camp in Uganda. WFP facilitated the establishment of a memorandum of understanding with the government of Uganda's Office of the Prime Minister, enabling WaterKit Wallet's rollout in the refugee camp in coordination with organizations in the camp responsible for the implementation of WASH activities.

### Results

WaterKit has improved water and sanitation access for 94,000 people in Bidibidi refugee camp. This includes 800 households reached with zero-interest credit for water, sanitation and clean energy products and 300 community handpumps serviced and maintained. Each handpump has the capacity to serve over 300 people.

### Lessons learned

Designing technologies to be simple, intuitive and culturally appropriate encourages adoption in resettlement contexts where users may have limited exposure to digital tools. At the same time, demand is often high for affordable and accessible WASH products in these underserved communities, meaning innovations must also plan and resource for unexpected demand.

### Read

[Two ways innovation is improving access to clean water and sanitation for refugees in Uganda](#)

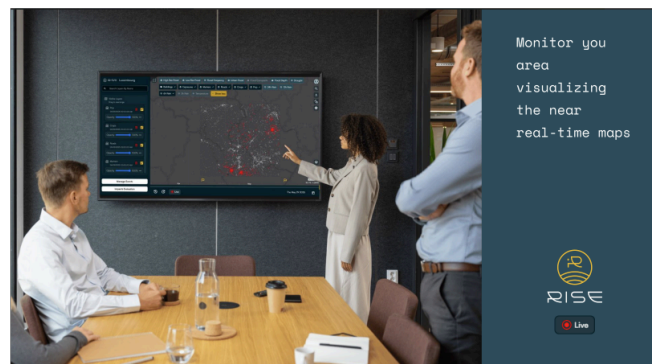
### WASDI

**Thematic area:** Emergency response

**Cross-cutting themes:** N/A

**Active in:** Niger

**Internal / External:** External



WASDI's RISE Dashboard delivers real-time actionable insights. | Photo: WASDI

### Innovation overview

Remote Imaging Support for Emergencies (RISE) is a cloud-based platform developed by WASDI that aims to address barriers in the

adoption of satellite-based Earth Observation (EO) data for humanitarian decision-making such as processing complexity, data latency, limited expertise and accessibility. By integrating state-of-the-art algorithms for processing EO data with a user-friendly web interface, RISE delivers actionable insights in near-real time. The application focuses on flood mapping, drought monitoring and urban area analysis.

### **Accelerator role**

WASDI was a participant in the Humanitarian Innovation Accelerator. It used its sprint support to develop RISE and to carry out a validation exercise in collaboration with the Shelter Research Unit of the Luxembourg Red Cross, aiming to assess the performance improvements and practical usability of RISE in real-world conditions.

### **Results**

As the RISE platform continues its development and validation process, 17 humanitarian and development organizations and governments have started familiarizing themselves with, using and providing feedback on the platform. Notably, RISE was used to map the flood events caused by Hurricane Melissa. The validation of the detected impacts and urban flood results, compared with Jamaica's public response data, proved highly successful. To meet customer needs, the WASDI team has added many new map layers to RISE, including on rainfall, pollution and wildfire. Over 65 existing and potential partners joined a RISE

showcase event to discuss the solution in 2025.

### **Lessons learned**

Carrying out in-depth analyses with key humanitarian agencies helped WASDI build a deeper understanding of the role RISE can play in humanitarian operations linked to on-field disaster management. This analysis led to many iterations of the dashboard for optimum usability and effectiveness.

# Alumni

## [Sehat Kahani](#)

**Thematic area:** Coalitions and solutions for the SDGs

**Cross-cutting themes:** N/A

**Active in:** Pakistan

**Internal / External innovation:** External

### Innovation overview

Using telemedicine, Sehat Kahani enables female physicians to be able to connect with people in need of healthcare. In marginalized communities, Sehat Kahani create nurse-assisted telemedicine clinics and for the urban market via a mobile app that enables connectivity with a physician in less than 60 seconds.

### Accelerator role

Sehat Kahani has been an alumni of the WFP Innovation Accelerator's SDGx programme since 2022, as it participated in the Creating Hope in Conflict: Humanitarian Grand Challenge, which enabled live-saving or live-improving innovations to help the most vulnerable people impacted by humanitarian crises in hard-to-reach, conflict-affected and fragile settings.

### Results

In 2025, Sehat Kahani achieved a historic leap in primary healthcare digitalization by developing a first-of-its-kind National Digitalized Healthcare Programme in direct collaboration with the Ministry of National

Health Services Regulations and Coordination in Nigeria. In 2025, Sehat Kahani reached a combined 1.35 million people, 271,900 of whom received direct services in digital and physical clinics, pharmacies or via their app and the indirectly benefitting from improved health outcomes, reduced medical costs and enhanced productivity from their household members receiving high-quality, affordable care.

### Quote

*"We aim to democratize healthcare by providing affordable & convenient telemedicine solutions to patients in need, using a pool of online female doctors."*

—Iffat Zafar Aga, Co-founder and COO, Sehat Kahani

## [Curafa Franchise Platform](#)

### [\(Access Afya\)](#)

**Thematic area:** Coalitions and solutions for the SDGs

**Cross-cutting themes:** N/A

**Active in:** Kenya

**Internal / External innovation:** External

### Innovation overview

Access Afya's solution, the Curafa Franchise Platform, lowers the cost of primary healthcare through efficient, smart healthcare planning and improves quality of care for patients by giving clinical officers and nurses the comprehensive tools that they need to collect and manage data and run their business, leveraging more than 150 data points to manage care for more than 100,000

patients, all while being supported by a central multidisciplinary team.

### Accelerator role

Access Afya developed the Curafa Franchise Platform to support their overarching healthcare network, which was supported by the WFP Innovation Accelerator and MIT Solve through a collaborative programme on measurement, which closed in 2023.

### Results

Access Afya has delivered 780,000 health services, including physical clinic visits, digital screenings and health support and chats with patients. An additional 460,000 people live within an area where they can access a qualified health professional via Access Afya. At an average of \$4.3 a visit the platform and network are estimated to have saved USD 8 million in healthcare spending, as the services are designed to be more affordable and accessible than comparable private alternatives.

### Quote

"At the heart of everything we do is a simple but powerful belief: everyone deserves easy and affordable access to quality healthcare."  
—Access Afya

## Flowminder

**Thematic area:** Coalitions and solutions for SDGs

**Cross-cutting themes:** N/A

**Active in:** Democratic Republic of Congo, Ghana, Haiti

### Internal / External innovation: External



Working on Flowminder at the Ghana Health Service. | Photo: Flowminder

### Innovation overview

Flowminder tackles the problem of inaccurate population data in data-scarce environments due to insufficient accounting for population mobility. Flowminder leverages, processes and analyses anonymized Call Detail Records data from mobile network operators to create accurate and dynamic population estimates. These population estimates can subsequently be integrated into official statistics for various use cases.

### Accelerator role

Flowminder was part of the Digital Health Innovation Accelerator Programme. The WFP Innovation Accelerator supported Flowminder as it tested the value of integrating Call Detail Record-derived dynamic population estimates into key health metrics for the Ghana Health Service in non-emergency and non-pandemic conditions.

### Results

Flowminder’s dynamic mobility estimates help improve the accuracy of national health metrics in areas of high mobility, where there is up to 56 percent variation between existing health metrics and those utilizing dynamic population estimates. Investments made through the DHIAP programme have benefited other countries where Flowminder is working. Globally, to date, over 420,000 individuals have received humanitarian assistance from institutions using data produced by Flowminder.

**Quote**

*“WFP’s support has been pivotal in enabling us to design and test the use of dynamic population estimates for enhancing health metrics. Our collaboration with the Ghana Health Service has been integral to this journey.”*

—Cathy Riley, Strategic Partnerships Director at Flowminder

**Lessons learned**

Sharing knowledge with key stakeholders whose participation is needed for proper implementation can be a way to progress those partnerships and get buy in. Flowminder shared expertise on data processing and analytics, for example, with national mobile network operators who are critical to project success so that they could learn new skills, do the work themselves and deploy those skills in other contexts.

**Read**

[How mobility data can improve humanitarian and development response](#)

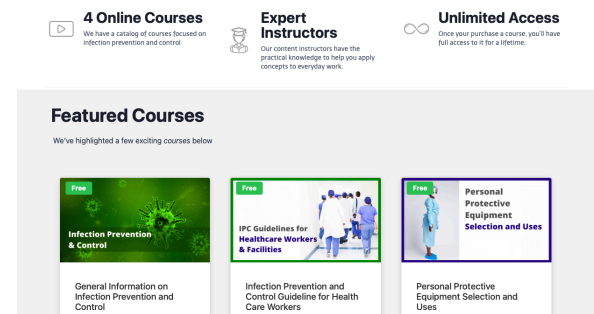


**Thematic area:** Coalitions and solutions for SDGs

**Cross-cutting themes:** N/A

**Active in:** Ghana, Nigeria, Sierra Leone

**Internal / External innovation:** External



Erith's online course offerings. | Photo: Erith

**Innovation overview**

Erith provides equipment, tools and training to health workers using simplified training modules in English, French and local languages for easy access for all staff in the healthcare industry. Those who have expertise in certain fields of practice are also able to join the platform as tutors and offer peer-to-peer advice and knowledge sharing.

**Accelerator role**

Through the Digital Health Innovation Accelerator Program, the WFP Innovation Accelerator provided support for Erith to make their e-learning and e-commerce platforms interoperable and enhance the range of free, streamlined courses for health workers. Erith also made their products and services available offline through an offline SMS service and offered the course materials in Krio, French and English.

## Results

Erith-trained healthcare workers have provided improved health services to 13 million people through hospitals, clinics and pharmacies in Nigeria, Ghana and Sierra Leone. Erith’s accessible training platform has trained 31,047 hospital workers and another 25,653 individuals in health institutions such as hospitals, NGOs, schools, fitness centers and more have been reached through Erith’s training and knowledge sharing.

## Lessons learned

Adding technical capacity training to their course offerings helped Erith enable better onboarding of users with lower technological literacy.

## Flare

**Thematic area:** Coalitions and solutions for SDGs

**Cross-cutting themes:** N/A

**Active in:** Ghana

**Internal / External innovation:** External

## Innovation overview

Flare is an emergency response coordination platform that connects patients, ambulance providers and hospitals through real-time dispatch technology. In Ghana, the system enhances fragmented emergency transport networks, reduces response times and ensures patients are rapidly connected to appropriate care through coordinated, data-driven lifesaving dispatches.

## Accelerator role

Through the Kofi Annan Award for Innovation in Africa, the accelerator supported Flare to set up operations and deploy the Flare system in Accra, Ghana, by setting up a fully functional and registered company in Ghana, systematizing pricing, contracts and payment systems and meeting with key customers in Accra.

## Results

Flare conducted 16,875 lifesaving dispatches reflecting 16,875 coordinated emergency responses, each ensuring that a person facing imminent risk was rapidly connected to appropriate, life-saving care. Flare integrated 245 hospitals into the Flare Dispatch system in Ghana, significantly strengthening the country’s emergency response network. The dispatch system demonstrates enhanced coordination between ambulance providers, dispatch centers and hospitals, contributing directly to improved emergency health outcomes.

## Quote

“Each dispatch represents more than a ride — it represents a life reached in time.”  
—Caitlin Dolkart, *Managing Director at Flare*

## Lessons learned

Building trusted coalitions across public and private emergency actors is essential for scaling digital health solutions. Early engagement with regulators, clear data-sharing protocols and local ownership significantly improve adoption. Sustainable impact requires aligning technology with

existing health systems, incentives and frontline responder realities.

## **iHRIS**

**Thematic area:** Coalitions and solutions for SDGs

**Cross-cutting themes:** N/A

**Active in:** Togo

**Internal / External innovation:** External

### **Innovation overview**

iHRIS is a free, open-source system that provides oversight of the health workforce, including those who are training, in service or leaving service and enables better workforce management. iHRIS uses an open, flexible interface for custom integrations as needed and it can be integrated into the Togo Health Management Information Systems.

### **Accelerator role**

The WFP Innovation Accelerator supported iHRIS through the Digital Health Innovation Accelerator Programme in developing monitoring, evaluation and learning frameworks to measure the results of their training programmes for health workers. This included providing tailored guidance on data collection, analysis and reporting to ensure measurable outcomes and continuous improvement.

### **Results**

The Togo Ministry of Health has adopted iHRIS's system. Various ministries and departments can now see aggregate data, reports and dashboards for 13,191 health

workers in the system. Those health workers are better supported through more effective workforce distribution and data for workforce planning and management, including elements like leave management, status and availability, training needs and gaps, promotion or transfers and performance evaluation.

### **Lessons learned**

Customizing iHRIS to align with the Ministry of Health's specific needs and the local context in Togo has been a cornerstone of the solution's success.

## **INITIATE**

**Thematic area:** Coalitions and solutions for SDGs

**Cross-cutting themes:** N/A

**Active in:** Democratic Republic of the Congo

**Internal / External innovation:** External



*INITIATE partners at the full-scale simulation in Accra, Ghana, testing the infectious disease treatment module. | Photo: WFP/Gonzalo Rodino*

### **Innovation overview**

Co-managed by WFP and WHO and hosted by the United Nations Humanitarian Response Depot (UNHRD) in Brindisi, the INITIATE

project aims to bring together global partners to promote knowledge sharing and skill transfers for an improved emergency response to health crises. The first iteration of INITIATE developed a rapidly deployable, easily transportable, extendable, self-contained and self-sufficient infectious disease treatment module that allows stakeholders to take rapid action when an outbreak emerges.

### Accelerator role

The WFP Innovation Accelerator has been driving the collaborative design approach amongst the INITIATE partners since 2021. With the final prototype of the infectious disease treatment module ready for testing, the WFP Innovation Accelerator designed and delivered a five-day full-scale infectious outbreak simulation in Accra, Ghana, with over 150 participants to reach final consensus on the design of the module in autumn 2024, enabling it to be implemented in a real-life outbreak scenario for the first time in 2025.

### Results

Through its transformative collaboration, INITIATE has brought together more than 50 partner organizations to codevelop and agree upon a universal treatment module for disease outbreaks. After several years of collaborative design, the INITIATE module was successfully deployed in the 2025 Ebola outbreak in Kasai, Democratic Republic of the Congo and treated 14 people. The full 32-bed treatment centre was set up in just ten days and is designed to ensure high standards of

infection prevention and control for the safety of both patients and health care workers.

### Quote

"INITIATE and this simulation exercise highlights the power of partnership. By bringing together stakeholders, we can test these innovations and gain insights to strengthen future preparedness."

—*Walid Ibrahim, UNHRD Network Coordinator*

### Lessons learned

Adding transparent screens to the infectious disease treatment module allows health crisis patients and their families to stay connected without contamination, reducing stress and improving the overall quality of care.

### Read

[Democratic Republic of the Congo improves Ebola care with modern treatment centre](#)

### Kajou

**Thematic area:** Coalitions and solutions for SDGs

**Cross-cutting themes:** N/A

**Active in:** Côte d'Ivoire, Senegal

**Internal / External innovation:** External

### Innovation overview

kHEALTH by Kajou proposes a technology to overcome the binary issues of access and accessibility of health workers. This suite of solutions involves e-learning-enabled microSD cards that health workers can insert into their smartphones and, through the Kajou app, transform the phone into an offline library

that fits in their pocket. The app allows users to read the content of microSD cards and offers internet-like navigation with advanced interactivity, tests and certification features.

### Accelerator role

Through the Digital Health Innovation Accelerator Programme, the WFP Innovation Accelerator supported kHEALTH in piloting its services into Côte d'Ivoire, where it produced and distributed localized health training modules to 5000 community health workers in collaboration with the Ministry of Health and other local health stakeholders.

### Results

In 2025, Kajou expanded its solution both in terms of product and beneficiaries. In addition to the training modules, Kajou introduced an AI-assistant designed to answer the CHWs' questions in real time, without requiring an internet connection. With this new version, Kajou localized its content to the Senegalese context and reached 2,000 community health workers in Côte d'Ivoire and Senegal, respectively. Among those, 500 have received the kHEALTH version with an AI-chatbot, leveraging advanced technologies for better health training results. Kajou has saved an estimated USD 2.1 million by delivering microSD cards and providing health training modules.

### Lessons learned

Organizing a steering committee helped Kajou garner the Ministry of Health's buy-in and alignment for the local uptake of the solution.

## LoMIS

**Thematic area:** Coalitions and solutions for SDGs

**Cross-cutting themes:** N/A

**Active in:** Nigeria

**Internal / External innovation:** External

### Innovation overview

The LoMIS suite, developed by eHealth Africa, is a host of applications designed to address supply chain challenges in public health. Its digital solution enables transparency and better planning of medical supplies across the supply chain, increasing efficiency and reducing waste. LoMIS empowers mothers to protect their children from preventable diseases, equips healthcare workers with dependable data and supply chains and grants communities the healthcare they deserve.

### Accelerator role

The WFP Innovation Accelerator supported LoMIS through the Digital Health Innovation Accelerator Programme in merging their LoMIS Stock and LoMIS Deliver solutions into a single app. The connection to WFP has increased eHealth's credibility and facilitated interest from diverse stakeholders. It also linked LoMIS to helpful mentorship and provided visibility opportunities on WFP platforms.

### Results

In the Nassarawa zone of Kano State, Nigeria, LoMIS has facilitated the vaccination of 8,900

children through proactive monitoring and restocking at health facilities. These children, aged 0-59 months who received at least one dose of routine immunization vaccines via LoMIS-supported logistics, directly benefited from improved service delivery and vaccine availability. In addition, LoMIS has trained 170 frontline healthline workers to conduct these vaccinations and an additional 71 on how to manage vaccine supply chains effectively.

### Lessons learned

Developing step-by-step instruction videos accelerated user adoption and reduced confusion in diverse linguistic and technical contexts. The videos were a standout resource and far outperformed static manuals.

## SORMAS

**Thematic area:** Coalitions and solutions for SDGs

**Cross-cutting themes:** N/A

**Active in:** Nigeria

**Internal / External innovation:** External

### Innovation overview

SORMAS (Surveillance Outbreak Response Management and Analysis System) is a mobile digital business management system for epidemic control measures. With the system, public health authorities can monitor and respond to outbreaks in real time, enabling

timely and effective intervention. SORMAS' advanced features include data analytics, case management, contact tracing and more, making it a comprehensive tool for communicable disease control.

### Accelerator role

Through the Digital Health Innovation Accelerator Programme, the WFP Innovation Accelerator supported SORMAS in providing countries with a tool to help decision making for infectious disease control programmes. In particular, the organization developed and launched the SORMAS Stats application, including a risk and severity module that will provide information on infectious disease risks by geographic areas.

### Results

The governments of Nigeria are using SORMAS to enhance their decision making for communicable disease control. As such, the system is used directly by national governments and information like user data or impact is not available for privacy concerns.

### Lessons learned

Keeping updated on new developments related to SORMAS's work, such as novel methodologies for vaccine production, helped guide their continuous learning and iteration of their product.



## 3.6 Innovation Network

The WFP Innovation Network is a growing network of 19 WFP country offices with innovation teams, three regional Innovation Hubs and a diverse community of 600 WFP Innovation Champions from across 165 duty stations. As the global innovation unit of the organization, the WFP Innovation Accelerator forges close collaborations with WFP country offices, business units and the broader WFP Innovation Network.

In 2025, the WFP Innovation Accelerator emphasized locally-driven innovation, enabling country offices to be the engines of innovation and focusing on empowering WFP's innovation ecosystem. In 2025, WFP Innovation launched a new Innovation Hub for Western and Central Africa, investing in the design and implementation of innovation strategies while building knowledge management systems and building innovation capacity across WFP.

**Through the WFP Innovation Network, the WFP Innovation Accelerator supports WFP innovators globally by:**

- Providing strategic innovation advisory and services enabling operations to effectively leverage innovation in alignment with their programmes and national needs;
- Developing innovation ecosystems capable of driving innovation and collaboration at scale;
- Leading the foremost community of practice for innovation exchange within WFP and the humanitarian sector, the WFP Innovation Champions Community;

- Reinforcing global knowledge sharing with robust systems such as the WFP Innovation database, to capture, manage and disseminate insights for further innovation scaling; and
- Inspiring and cultivating a vibrant innovation culture at WFP through dynamic learning, development and recognition initiatives.

## WFP regions and countries with dedicated innovation teams or focal points

<b>Eastern Africa</b>	Ethiopia, Kenya, Rwanda, Somalia, South Sudan, Tanzania, Uganda
<b>Latin America and the Caribbean</b>	Bolivia, Colombia, Cuba, Dominican Republic, Ecuador, El Salvador, Guatemala, Honduras, Nicaragua, Panama, Peru, Venezuela
<b>Western Africa</b>	Benin, Senegal, Ghana, Nigeria
<b>Regional Innovation Hubs</b>	Kenya for Eastern Africa, Panama for Latin America and the Caribbean, Senegal for Western and Central Africa

## A global network of WFP’s innovation teams

### In 2025, 19 teams from the WFP Innovation Network:

Directly assisted <b>182,073</b> people through innovations
Raised <b>USD 11,015,810</b> in funding for innovation
Implemented <b>21</b> regional innovation and country-led innovation programmes
Directly managed <b>32 projects</b>
Provided funding/support for <b>209 ventures</b> through respective innovation programmes
Supported <b>200 women-led initiatives</b>

The WFP Innovation Network attests that locally led, partnership-driven approaches yield the strongest, most scalable results across food systems. Drawing on experiences from teams in Latin America, Eastern, Southern and Western Africa, the following distilled learnings guide design, implementation and scaling of innovation initiatives.

**1. Embed innovation from the outset and center it on people and local needs**

When co-designed with programme teams and anchored in community realities, innovations achieve faster uptake, clearer ownership and stronger pathways to scale.

**2. Invest in evidence, learning, and documentation**

Clear results metrics, cost-benefit narratives and captured lessons increase internal buy-in, attract external financing and enable replication across field offices and regional platforms.

**3. Plan for longevity with partners and governance from the start**

Build sustainability into pilots using tools like independent branding, explicit transition and handover clauses, multiple provider options (e.g. Long-Term Agreements), early intellectual property arrangements and secured funding to sustain activities beyond pilots.

**4. Establish dedicated innovation leadership and leverage AI-enabled workflows**

Designated focal points translate operational challenges into actionable solutions, connect programmes with emerging technologies and partners and use AI to alleviate routine workloads and free staff for higher-value work.

**5. Scale through government and institutional partnerships with patient, context-aware implementation**

Collaboration with national and regional authorities is essential for local-scale innovations and system-wide change, supported by realistic timelines and adaptive approaches.

## **West Africa Innovation Hub Launch**

In 2025, the launch of the West Africa Regional Innovation Hub translated the WFP Innovation Strategy into concrete action across the region. In close collaboration with the teams based in the region, the WFP Innovation Accelerator consulted with 27 WFP Country Directors, regional office leadership and technical specialists to identify priority challenges and opportunities for innovation. This process was complemented by ecosystem mapping and targeted research, resulting in a shared regional innovation vision, clearly defined priority areas, and a strategic activation roadmap to guide partnerships, investments, and the scaling of innovation across West Africa. In December 2025, the WFP Innovation Accelerator supported the launch of the West Africa Innovation Hub in Dakar, Senegal, through a regional innovation event that connected more than 100 partners to innovators and WFP leadership.

## Convening and culture

### The power of convening

The WFP Innovation Network team at the WFP Innovation Accelerator organized, contributed to and convened a total of 30 workshops and events in 2025, including facilitating innovation support services to WFP Ghana. The Ghana programme team went through a Training of Trainers workshop to integrate human-centered design into their social and behaviour change communication strategy. Insights from the training informed programme design, enhancing co-creation with partners and validation touchpoints with users. The team also facilitated a new ways of working session for WFP's Human Resources Career Management Branch team, exploring innovative approaches to collaboration and communication across teams.

### WFP Innovation Week

In 2025, the WFP Innovation Network hosted the annual flagship WFP Innovation Week, guided by the question of how to ensure that innovation remains deeply connected to the people and communities we serve. Over three days, nearly 700 participants from across all WFP regions and other UN agencies joined 23 speakers to explore topics ranging from AI tools to community-led solutions. The event demonstrated WFP's strong commitment to embedding innovation into its strategy and operations.

### WFP Innovation Awards

During the WFP Innovation Awards, the Accelerator launched the WFP Innovation Awards following a highly consultative and participatory design process across 15 WFP country offices and regional teams. The initiative highlights WFP teams developing innovative and scalable solutions that save WFP time and money while enabling the organization to adapt and deliver better results for people receiving WFP assistance. More than 40 innovation teams across all WFP regions and award categories applied, showing strong interest in the award.

### WFP Innovation Champions Community

The WFP Innovation Champions Community grew to 600 members in 2025. The community, which is open to all WFP colleagues, builds upon innovation knowledge and helps colleagues collaborate with like-minded allies across the organization and better equip themselves to assess and support innovation across the organization. An AI thematic group convened by an Innovation Champion engaged over 270 colleagues, helping colleagues implement AI solutions in their work via a series of sessions focused on AI literacy, practical use cases and emerging trends.

## Unified innovation systems and knowledge

In 2025, the WFP Innovation Network strengthened the organization's global innovation ecosystem by expanding knowledge access, showcasing impactful solutions and supporting the uptake of innovation across regions and country offices.

The **WFP Innovation Database** is an internal search engine for all innovations, people and knowledge across WFP. It enables global access to innovation-related information and increases visibility of ongoing work. Since its launch in April 2024, more than 700 WFP employees have accessed the database, and WFP colleagues have published 288 innovations. 241 of those address SDG2: Zero Hunger. 58 knowledge resources have been collected onto the database and 72 WFP innovators have been listed as focal points for existing projects to facilitate connection and uptake of new solutions across the organization.

The **Accelerator INSIGHT system** serves as the WFP Innovation Accelerator's centralized platform for tracking innovation initiatives, performance metrics and portfolio data. The system supports structured cross-programme data collection, verification and analysis, improving the quality and consistency of reporting. INSIGHT enables WFP Innovation Accelerator teams to monitor progress and take evidence-based action to bring innovations to scale.

WFP's **people and knowledge-driven network** based in country and regional offices produced and shared 53 knowledge products and communication materials, which offer valuable insights from WFP operations and share practical guidance. Teams also organized 24 events that facilitate knowledge exchange, showcase innovation and venture achievements and build engagement among local partners and WFP employees.



### 3.7 Communications and Knowledge Management

In 2025, the WFP Innovation Accelerator led the way in addressing the world's most pressing challenges through innovation. The Communications and Knowledge Management circle enables WFP to turn innovation into influence and action.

By amplifying the stories of innovators scaling around the world, communications ensures that local successes are visible to global audiences and can be replicated elsewhere. The team helps the WFP Innovation Accelerator and its innovators articulate results and expand its ecosystem with compelling calls to co-invest and scale, positioning the WFP Innovation Accelerator as the partner of choice for humanitarian innovation.

Together with WFP Innovation hubs and units, the communications and knowledge management team bolstered the WFP Innovation brand, uniting efforts across the organization and providing a platform for pioneering solutions that enhance WFP's global operations.

#### In the news

In 2025, the WFP Innovation Accelerator garnered 15 high level media mentions. It was featured in several top-tier publications, including [Devex](#), [Forbes](#), [Project Syndicate](#), [the World Economic Forum](#), [Diplomatic Courier](#) and [Heise Online](#),

ensuring strong global visibility and positioning of WFP's work on innovation with our partners.

The [WFP Global Outlook 2026](#) highlighted how innovation and digital transformation are now central to delivering food and assistance in one of the most challenging funding environments the humanitarian system has faced.

## Social media

In 2025, the WFP Innovation Accelerator's social media channels promoted WFP's global reputation as a leader in humanitarian innovation. [LinkedIn](#), [X](#) and [Medium](#) maintained steady audience growth, consistent engagement and strong visibility for WFP's innovation work. The WFP Innovation Accelerator's digital presence remained a key driver of outreach to innovators, partners, governments and the wider humanitarian community.

LinkedIn remained its most impactful platform, with the community growing to over 65,500 followers and over 880,000 impressions throughout the year. January granted the highest monthly impressions at 124,000 thanks to our engagements at WEF and other events, sprint results reports and anticipation for the 2025 WFP Innovation Forum. The LinkedIn newsletter continued to be a powerful channel for long-form storytelling, reaching over 38,000 subscribers, with several editions exceeding 20,000 article views.

On X, the WFP Innovation Accelerator engaged a community of over 13,200 followers. Live coverage of the WFP Innovation Forum in February contributed to one of the highest monthly impression totals, reaching 7,000 impressions.

Medium remained an important platform for in-depth insights, with over 20 blogs published and monthly views ranging between 1,100 and 2,200, and an annual readership of 19,000 people. Engagement was strongest on pieces exploring frontier technologies, scaling pathways and lessons from WFP's global network of innovators, reflecting sustained interest in practical insights and thought leadership on humanitarian innovation.

Across all platforms, social media continued to play a vital role in amplifying WFP's innovation work, driving awareness, engagement and connection with audiences committed to advancing solutions to global hunger.

## Knowledge management

In 2025, the WFP Innovation Accelerator grew its role in supporting strategic moments for WFP and its partners by providing targeted knowledge products and talking points for high-level engagements.

This included tailored briefing materials for the UN General Assembly, the World Economic Forum and the AI for Good Global Summit, which ensured consistent, evidence-based messaging across leadership engagements. With insightful briefs, the WFP Innovation Accelerator helps position WFP's innovation work as a global leader and partner of choice for humanitarian action, technology and food security.

[The WFP Innovation Accelerator website](#) continued to attract a diverse audience seeking information on its calls for applications, innovation initiatives and broader knowledge-management resources. In 2025 alone, nearly 270,000 people visited the platform, demonstrating sustained global interest in the tools, insights and opportunities the Accelerator provides.

Overall, the WFP Innovation Accelerator produced over 150 external knowledge products, including 30 articles, blogs and op eds and over 50 videos, audio events, case studies, factsheets, guidelines and webpages.

## WFP Innovation Exhibition

In 2025, the WFP Innovation Accelerator launched the first WFP Innovation Exhibition during the Executive Board session in Rome. Under the theme "*Innovation Rooted in Humanity*", the in-person exhibition guided UN Member State representatives, partners and WFP colleagues through eight innovation stations, each illustrating how WFP implements bold, scalable solutions to fight hunger.

The exhibition featured powerful portraits and stories from people supported by WFP innovations and the colleagues driving these solutions forward, creating an immersive, narrative-driven experience. Augmented reality enabled visitors to use their smartphones to explore deeper layers of impact, bringing the stories and innovations to life in an interactive way.

To extend the exhibition's reach beyond Rome, the Accelerator also produced an online version of the Innovation Exhibition. The [online exhibition](#) was amplified across WFP's social media channels,

enabling global audiences to explore the same stories. The exhibition will continue championing WFP's innovative work as it travels to the Finance for Development Summit in New York in 2026.



# Appendix

## A.1 Programme cohorts

The WFP Innovation Accelerator ran 14 programmes in 2025 in collaboration with diverse public, private and UN partners. Although these programmes take several forms, many include sourcing a cohort of innovations to complete an innovation sprint - a tailored and specific support period. Some of the innovations will receive mixed support from a variety of stakeholders based on their strategic relevance and potential.

The cohorts of donor-specific programmes that were active in 2025 are as follows, ordered alphabetically by programme name:

Adaptation Fund Climate Innovation Accelerator (AFCIA) (cohort 1 - MENA)	
<i>Programme info</i>	<i>Cohort innovations</i>
<p><b>Circle:</b> SDG2  <b>Partners:</b> Adaptation Fund</p>	<ul style="list-style-type: none"> <li>• Adaptive Symbiotic Technologies</li> <li>• Deploy Tech</li> <li>• Greener Herd</li> <li>• NoorNation</li> <li>• P-Vita</li> <li>• Partners with Sun</li> <li>• Remer</li> <li>• Responsive Drip Irrigation</li> <li>• Visual Artificial Intelligence Solutions</li> </ul>

Agricultural Innovation for Climate Resilience	
<i>Programme info</i>	<i>Cohort innovations</i>
<p><b>Circle:</b> SDGx  <b>Partners:</b> Deutsche Gesellschaft für Internationale Zusammenarbeit GmbH (GIZ), Fund for the Promotion of Innovation in Agriculture (i4Ag), German Federal Ministry for Economic</p>	<ul style="list-style-type: none"> <li>• ANKA AgriGrid</li> <li>• aQysta Malawi</li> <li>• BEBEQUE Limited</li> <li>• EcoRich Solutions</li> <li>• Energy Assured (SheFarmsGreen)</li> <li>• Farmer Lifeline Technologies</li> <li>• Mechro Limited</li> <li>• Smartel Agritech</li> <li>• Thur Biotech</li> <li>• Urban Greens</li> </ul>

Cooperation and Development (BMZ)	
-----------------------------------	--

**Far-reaching integrated delivery programme (FaRID)**

<i>Programme info</i>	<i>Cohort innovations</i>
<b>Circle:</b> SDGx <b>Partners:</b> Gates Foundation	<ul style="list-style-type: none"> <li>• FaRID health camps and sustainable model</li> </ul>

**Humanitarian Innovation Accelerator (cohort 1)**

<i>Programme info</i>	<i>Cohort innovations</i>
<b>Circle:</b> SDGx <b>Partners:</b> Luxembourg, Austria	<ul style="list-style-type: none"> <li>• Bleaglee</li> <li>• Jangala</li> <li>• Neurotech</li> <li>• OPAL</li> <li>• Opero</li> <li>• Speetar</li> <li>• WASDI</li> <li>• Waterkit Wallet</li> </ul>

**INITIATE**

<i>Programme info</i>	<i>Cohort innovations</i>
<b>Circle:</b> SDGx <b>Partners:</b> WHO, UNHRD	<ul style="list-style-type: none"> <li>• INITIATE infectious disease treatment module</li> </ul>

**Kofi Annan Award for Innovation in Africa (cohort 2 - SDG2)**

<i>Programme info</i>	<i>Cohort innovations</i>
<b>Circle:</b> SDGx <b>Partners:</b> Austrian Federal Chancellery, Kofi Annan Foundation, Austrian Development Agency	<ul style="list-style-type: none"> <li>• Amini</li> <li>• ChipChip</li> <li>• FRESH Networks</li> </ul>

PALM Innovation Challenge	
<i>Programme info</i>	<i>Cohort innovations</i>
<p><b>Circle:</b> SDG2  <b>Partners:</b> WFP Iraq</p>	<ul style="list-style-type: none"> <li>• Alreef Mushroom</li> <li>• Greenshovel</li> <li>• Zhany</li> </ul>

Stability-and-Peace Accelerator (cohort 2)	
<i>Programme info</i>	<i>Cohort innovations</i>
<p><b>Circle:</b> SDG2  <b>Partners:</b> CGIAR, International Water Management Institute (IWMI)</p>	<ul style="list-style-type: none"> <li>• EcoRich</li> <li>• OnlyPlants</li> <li>• Rebug2Debug</li> </ul>

Strategic AI Partnership for Humanitarian Actions	
<i>Programme info</i>	<i>Cohort innovations</i>
<p><b>Circle:</b> Frontiers &amp; AI  <b>Partners:</b> Luxembourg, Luxembourg Institute of Science and Technology (LIST) and CERN</p>	<ul style="list-style-type: none"> <li>• Anomaly Detection for Assistance Delivery</li> <li>• Extreme Weather Forecasting</li> <li>• Building Damage Assessment</li> <li>• Crop Yield Early Estimate</li> </ul>