



World Food Programme

SAVING LIVES  
CHANGING LIVES



# WFP Jordan

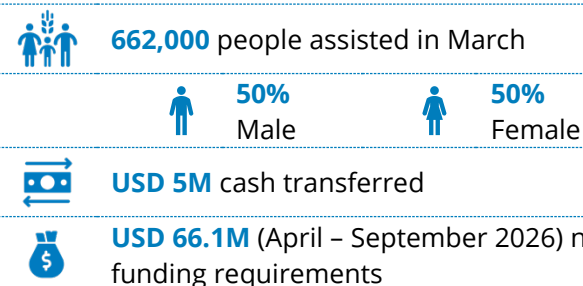
## COUNTRY BRIEF

April 2026

### KEY HIGHLIGHTS

- In March, WFP continued to provide reduced monthly food assistance of JOD 15 (USD 21) per person to 220,000 refugees in camps and host communities, covering only basic needs. From 1 April 2026, WFP food assistance was discontinued for an estimated 135,000 refugees residing in host communities due to lack of funding..
- Activities supporting refugee self-reliance have begun in both Azraq and Zaatari camps, with approximately 160 participants receiving technical vocational training in various vocational tracks including IT, carpentry, welding, tailoring and others.

### IN NUMBERS



#### Photo Caption & Credit:

Born and raised in Zaatari Refugee Camp, children play with what is available to them. A shared bicycle offers a simple moment of play, reflecting how daily life continues despite ongoing challenges. WFP/Mohammad Batah

### SITUATION OVERVIEW

- Jordan is a low-middle-income country with a population of 11.9 million, 63 percent of whom are below the age of 30. Jordan is also a resource-poor, food-deficit country with dwindling energy and water resources and limited agricultural land.
- Jordan remains one of the world’s largest refugee-hosting countries, accommodating approximately 3.5 million refugees. This includes more than 2 million Palestinian refugees and an estimated 1.3 million Syrian refugees (of whom around 397,000 Syrian refugees registered with UNHCR as of March), in addition to smaller numbers of other nationalities.
- Jordan is navigating a complex regional environment that is increasing uncertainty and putting pressure on trade, investment, and overall economic conditions, while global cost increases. In response, the Government is taking measures to stabilize prices, manage subsidies, facilitate trade and essential imports, and maintain strategic reserves to mitigate impacts and protect vulnerable populations. Unemployment remains a structural issue in Jordan, particularly among youth and women. In the fourth quarter of 2025, the unemployment rate was 16 percent among population, with women accounting for 34 percent of those unemployed.
- Building on its achievements under its [Country Strategic Plan \(2023–2027\)](#) in previous years, WFP continues providing unconditional food assistance to vulnerable refugees, alongside technical assistance to strengthen national social protection programmes and systems. WFP continues to prioritize education and nutrition activities while advancing resilience interventions. In parallel, WFP Jordan, together with the Government continues to play a pivotal role in coordinating and facilitating the delivery of food assistance into Gaza.

## OPERATIONAL UPDATES

### General Food Assistance

- In March, WFP continued to provide monthly food assistance to 220,000 refugees in camps and host communities. The transfer value remained reduced at JOD 15 (USD 21) per person, allowing refugees to meet only the bare minimum of their essential food needs.
- **Due to a severe funding shortfall, WFP has announced the discontinuation of food assistance for all refugees in host communities (135,000 Syrian refugee), effective in April 2026. Refugees in camps will continue to receive assistance at the current reduced level (JOD 15/USD 21 per person).**

### The National School Feeding Programme

- School feeding activities were suspended during most of March due to the Ramadan and Eid period. Activities resumed towards the end of the month, with WFP and the Ministry of Education distributing healthy meals to 22,000 refugee students in camps and to 42,000 students in communities. In addition, approximately 400,000 students in communities received date bars.
- The Ministry of Education confirmed in April its support to cover a portion of the healthy meals funding requirements as part of the National School Feeding Programme. However, the programme continues to face a funding gap of USD 7.6 million until the end of the year. Of this amount, USD 1 million is urgently required to initiate the production of date bars in May to ensure timely distribution in September to 400,000 students.

### Resilience and Livelihood Support

- Activities supporting refugee self-reliance have begun in both Azraq and Zaatari camps, with 160 participants receiving technical vocational training in various vocational tracks including IT, carpentry, welding, tailoring and others.
- In March, WFP, in partnership with the Jordan River Foundation, continued its support to strengthen the technical capacity of the Agricultural Credit Corporation loan officers on climate-smart agriculture lending. A technical information session was conducted in Al-Salt, marking the second in a series aimed at guiding smallholder farmers in adopting climate-smart agricultural technologies and practices, while supporting the sustainability of their livelihoods.
- WFP, in partnership with the Inter-Islamic Network on Water Resources Development and Management and the Ministry of Agriculture, has launched a call for applications for Community Sustainability Committees

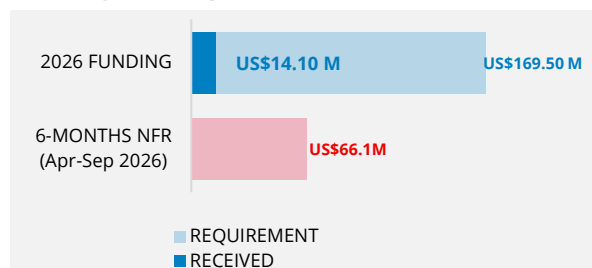
across twelve localities in Al-Sarhan, Al-Mukeifteh and Um Al Quttain in Mafrqa, and Wadi Al-Rayyan in Irbid. As a cornerstone of the Community-Based Natural Resources Management initiative, these voluntary committees will inform the design and adoption of decentralized, adaptive solutions to strengthen environmental resilience and sustain community livelihoods.

### Support for Gaza Response

- In March, WFP and the Logistics Cluster delivered 77 trucks carrying 1,367 mt of food into Gaza via the commercial modality through the King Hussein Bridge (KHB)-Allenby crossing.
- The Government-to-Government (G2G) modality, the primary channel for assistance from Jordan, remains suspended following the September 2025 incident at KHB-Allenby crossing. Jordanian authorities and the international community, continue to advocate for the immediate resumption of G2G convoys.
- WFP hosted Germany's Federal Minister for Economic Cooperation and Development, Reem Alabali Radovan, alongside UN Assistant Secretary General UNDP Assistant Administrator at a warehouse in Jordan supporting the Gaza response, where aid is received, stored, and dispatched via the Jordan Corridor with partners.

## FUNDING OVERVIEW

### Country Strategic Plan (2023-2027)



## DONORS

China, Finland, France, Germany, Ireland, Italy (AICS), Japan, Ministry of Education/GoJ, Switzerland, Sweden, UK/FCDO, USA, World Bank and the private sector (Astra, Choithrams, Japanese private sector, US private sector and Talabat).