



MALAWI

COUNTRY BRIEF

MAY 2026



1.2 million people assisted in April 2026
(50.7% female)



1,336 mt food distributed in April 2026



USD 34M required in the next six months
(MAY – OCT 2026)



9,735 Flood-affected households have been assisted with food and emergency kits.



21,457 people have been treated for moderate acute malnutrition treatment in April 2026

KEY HIGHLIGHTS

- The Department of Disaster Management Affairs (DODMA) and WFP continue to respond to households affected by the floods that occurred in March this year where at least 368,000 people (81,842 households) across 23 district and city councils were affected.
- WFP reached nearly 1.2 million people in April, distributing 1,336 metric tons of food and USD 2.41 million through cash-based transfers.

SITUATION OVERVIEW

- Malawi is a small, landlocked country in Sub-Saharan Africa with a population expanding rapidly at 3 percent per year. With most livelihoods dependent on rainfed agriculture, the population is highly vulnerable to the effects of natural disasters, especially drought and cyclone-induced floods.
- Malawi's challenges are compounded by weak economic growth (GDP growth around 1.8 percent in 2024; [International Monetary Fund, 2025](#)), high overall debt distress, low primary school completion (44 percent; Malawi Ministry of Education, Science and Technology, 2025), a high prevalence of stunting (37.6 percent; [UNICEF, 2024](#)) and high prevalence of HIV/AIDS infection (6.2 percent; [World Bank, 2025](#); World Bank).
- Harvest season is underway across Malawi, with overall yields near average. Dry spells and late rains have left some areas facing shortfalls and careful post-harvest handling is vital to avoid further losses.
- Fuel prices have been reduced. Petrol which had previously risen by 34 percent in March 2026, has now been adjusted downward by 6 percent. This reduction provides temporary relief to households, though global market volatility linked to disruptions to the fuel supply in the Middle East continues to pose risks.
- WFP supports the Government for a food and nutrition secure and resilient future, guided by the Sustainable Development Goals (SDGs).

OPERATIONAL UPDATES

Floods Emergency Response

- A rapid assessment of the March 2026 floods identified 9,735 households (43,808 people) in urgent need within 72 hours, prompting WFP to deliver specialized nutritious foods and emergency kits to all identified households in eight districts. A detailed assessment later informed a national response plan targeting 81,842 households (368,289 people) with three months of support (April–June), and a two-month recovery phase (August–September).

Refugees

- More than 62,000 refugees and asylum seekers in Dzaleka Camp depend on WFP's cash assistance to meet daily food needs. Due to funding constraints, the refugees and asylum seekers are only receiving 60 percent rations. Without additional resources, cash assistance will be suspended by September 2026.

Nutrition

- WFP supports the Ministry of Health in managing moderate acute malnutrition across seven districts, reaching 21,457 beneficiaries in April with an 86 percent recovery rate. WFP is also advocating for nutrition integration in Malawi's Global Fund Grant Cycle 8 for TB and HIV, leveraging proven interventions that have reduced mortality from 8–10 percent to below 3 percent, to sustain and scale life-saving outcomes.

School-Based Assistance

- WFP's home-grown school feeding programme supports 769,150 learners, but nearly 594,000 risk losing access to daily meals from September 2026 due to funding shortfalls. Current coverage stands at 44 percent, and any disruption would undermine both nutrition and education outcomes. Of those reached, 431,150 learners receive daily morning meals, while 338,000 learners in 278 schools benefit from specialized nutritious porridge.

Resilience and Livelihood Support

- Through the Livelihoods Assets Resilience Academy – Southern Africa Livelihoods and Resilience University Network (LARA-SARLUN)

partnership, WFP is collaborating with [MUST](#) and [LUANAR](#) to strengthen national resilience programming. This collaboration enhances Malawi's ability to deliver integrated food security solutions and sustainable, evidence-based resilience strategies.

Food Systems

- WFP conducted market linkage and post-harvest management training for 4,000 cooperative members in Mangochi, supported by the Ministry of Trade and Industry and First Capital Bank. The training strengthened aflatoxin management, cooperative formalisation and access to structured markets. In parallel, post-harvest handling trainings in 18 districts are targeting 500 farmer organisations and 673 households to reduce losses and improve incomes.

Anticipatory Action Activation

- Anticipatory Action (AA) is transforming food security outcomes in Malawi. During the 2024/25 agricultural season, households harvested an average of 328 kg of maize and 125 kg of sorghum. By 2025/26, yields rose to 1,295 kg of maize in Zomba and Phalombe, and 720 kg of sorghum (14 bags) in Nsanje. This demonstrates how AA is protecting consumption and boosting production to reduce needs in the next season and beyond, reducing reliance on lean season assistance. A total of 4,749 households benefited from this initiative.

Emergency Preparedness and Response

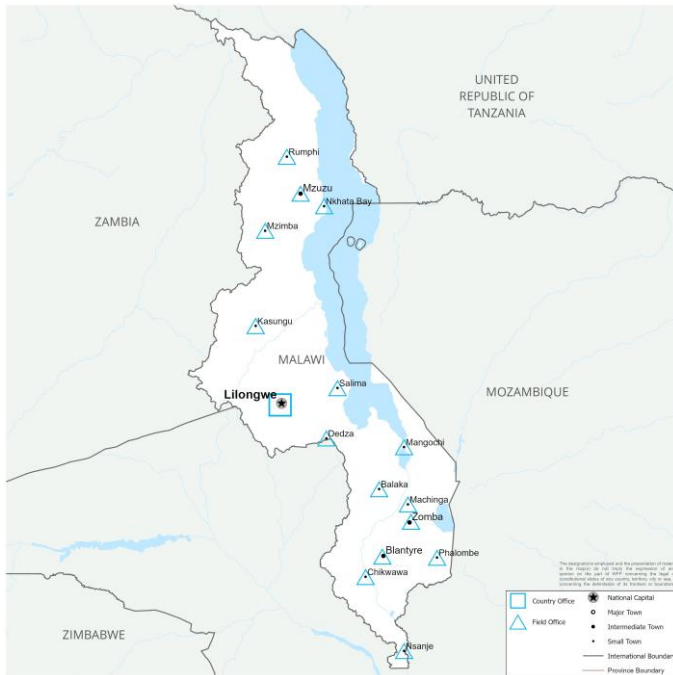
- WFP received two rubber boats, engines, and flotation devices from [Staffordshire Emergency Services Humanitarian Aid Association](#) (SEESHA) through United Kingdom Foreign Commonwealth Development Office (FCDO). The equipment will be stationed at the Humanitarian Staging Area (HSA) in Nsanje to strengthen rainy season preparedness and enhance national search and rescue capacity, directly contributing to lifesaving operations during flood events.

Gender, Protection and Inclusion

- WFP rolled out Disability Inclusion/Digital Financial Inclusion (DI/DFI) to embed disability inclusion within government-led systems and district coordination structures. Achievements include

the establishment of functional district platforms and completion of targeting and profiling in four districts, providing evidence for inclusive programming. This system-strengthening approach enhances government ownership, improves coordination, and ensures sustainable service delivery that leaves no one behind.

WFP MALAWI Activity Map – April 2026



Funding Shortfalls

- WFP urgently requires USD 18 million to deliver emergency food and nutrition assistance to flood-affected households through August 2026.
- To sustain reduced rations for refugees’ support until December, WFP requires USD 4.3 million, while restoring full rations would require USD 7.2 million.
- To sustain operations and protect gains throughout the 2026/27 academic year, WFP urgently requires USD 11 million.

Donors

Denmark, European Civil Protection and Humanitarian Aid Operations, European Union International Partnerships, France, Germany, Iceland, Ireland, Italy, Japan, Luxembourg, The Church of Jesus Christ of Latter-day Saints, Malawi, Multilateral Funds, Netherlands, Norway, Republic of Korea, Switzerland, United Kingdom Foreign, Commonwealth and Development Office (FCDO), United States of America and WFP’s Emerging Donors Matching Fund (in alphabetical order).

FOLLOW US ON



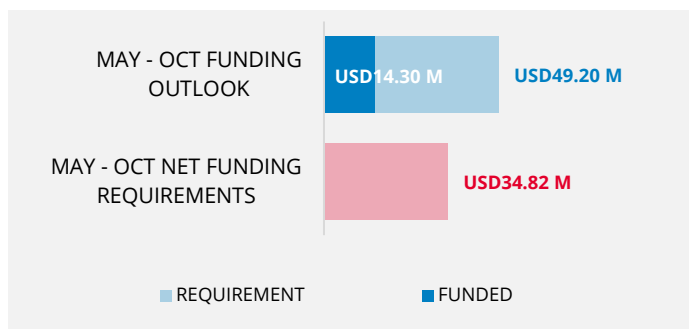
facebook.com/WFPmalawi



@WFP_Malawi

FUNDING OVERVIEW

Country Strategic Plan (2024-2028)



(3 percent of the 2026 country portfolio funded)