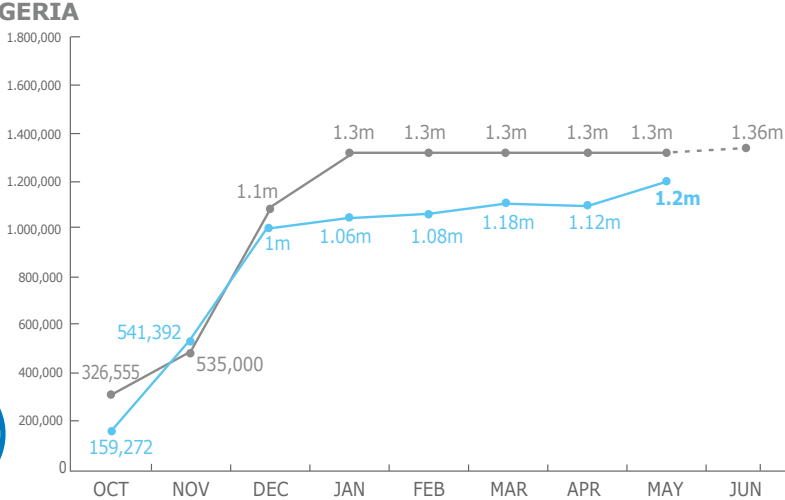


PEOPLE ASSISTED



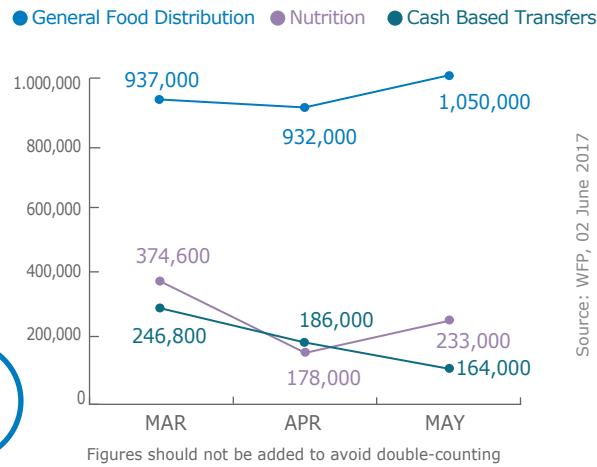
NIGERIA



OPERATIONAL PROFILE



BY ACTIVITY



FUNDING



Nigeria component of Regional Emergency Operation 200777

July – December 2017

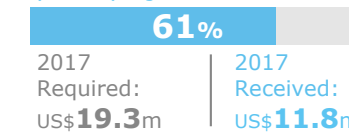
US\$191m
Net Funding Requirements

2017 operations **33% funded**

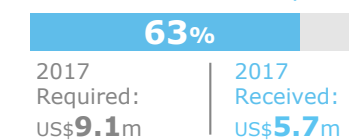
Source: WFP, 23 June 2017

PROJECT RESOURCES: COMMON SERVICES

Special Operation 200834
UN Humanitarian Air Services (UNHAS) Nigeria



Special Operation 201032
(Logistics and Emergency Telecommunication Sectors)

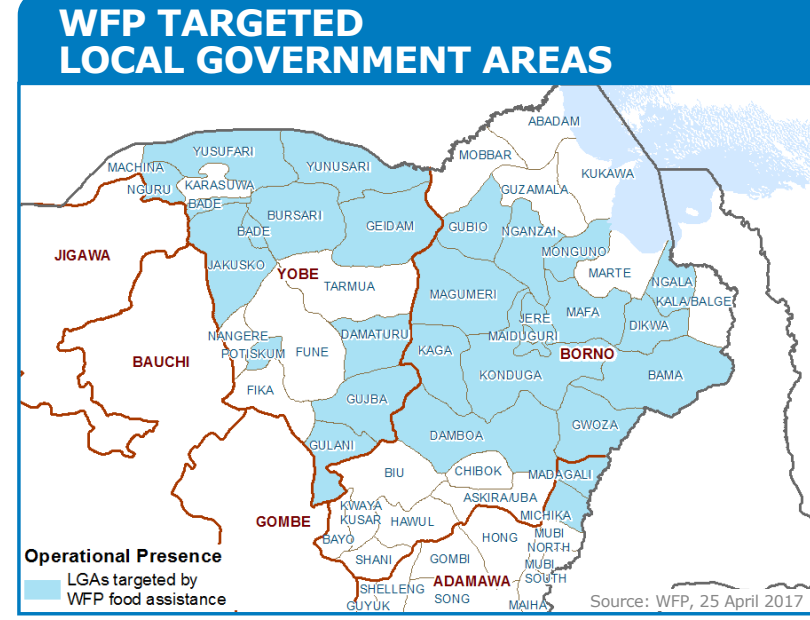
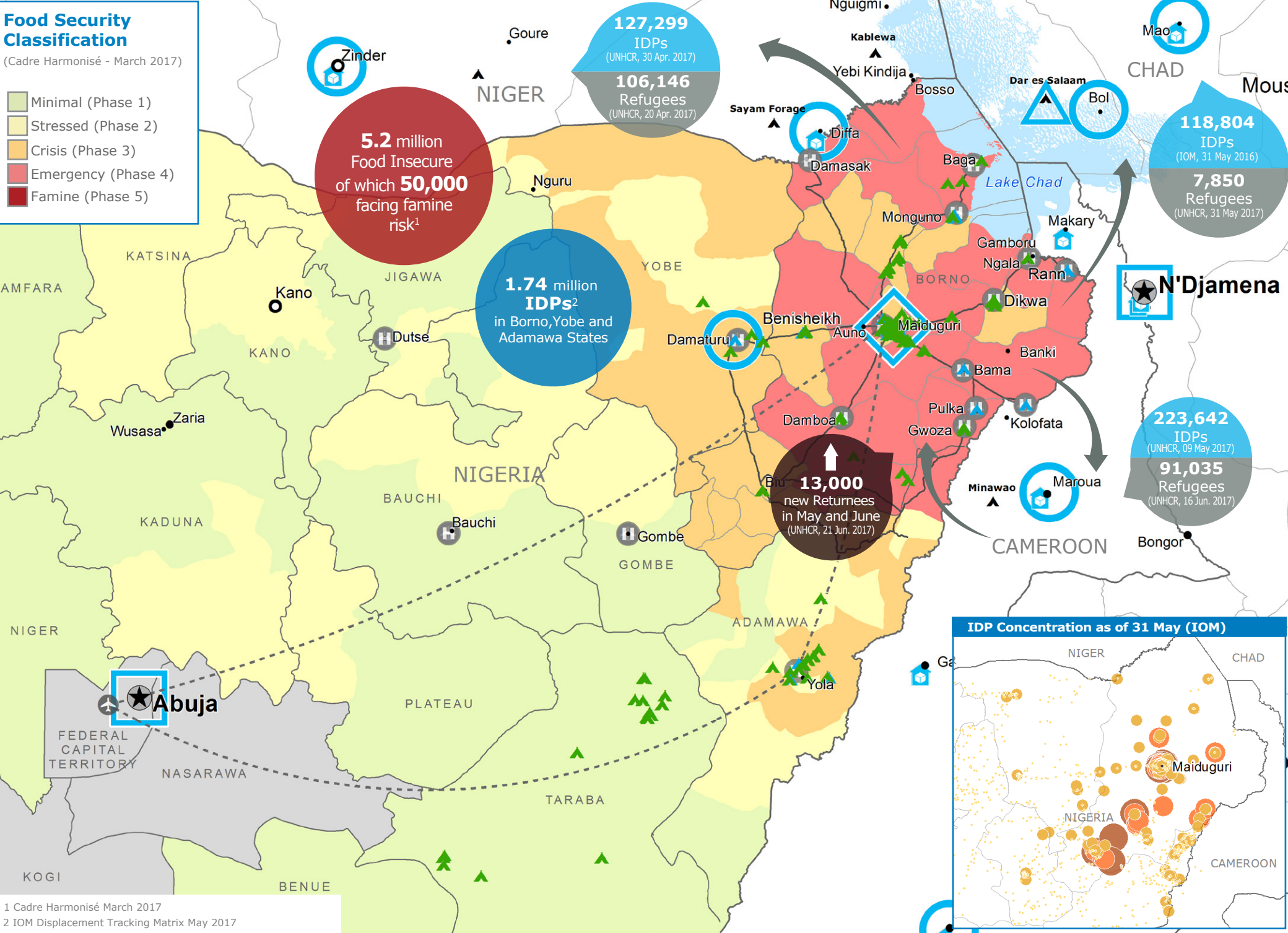


Source: WFP, 16 June 2017

Food Security Classification

(Cadre Harmonisé - March 2017)

- Minimal (Phase 1)
- Stressed (Phase 2)
- Crisis (Phase 3)
- Emergency (Phase 4)
- Famine (Phase 5)



WFP LED & CO-LED SECTORS

Sector	Requirements	Received	Number of Partners
Food Security and Livelihoods Sector	US\$480.3m	US\$79m	34 (May)
Emergency Telecommunications Sector	US\$4.84m	US\$1m	31 (May)
Logistics Sector	US\$4.9m	US\$2.6m	49 (May)

UN Humanitarian Air Service (UNHAS)

Passengers Transported: 3,022 (MAR), 3,312 (APR), 3,773 (MAY)

Organizations Supported: 56 (MAR), 62 (APR), 68 (MAY)

WFP LEVEL 3 EMERGENCY SINCE 11 AUGUST 2016

For more information, see the **SITUATION REPORT** and **COUNTRY BRIEF** www.wfp.org/countries/nigeria

2A Regional Emergency Operation 200777
documents.wfp.org/stellent/groups/public/documents/ep/WFP284303.pdf

Produced by the WFP **Operations Centre (OPSCEN)** jointly with Country Office and Regional Bureau Dakar

This dashboard is based on best available information at the time of production. Future updates may vary as new information becomes available.

1 Cadre Harmonisé March 2017
2 IOM Displacement Tracking Matrix May 2017

<ul style="list-style-type: none"> Country Office Area Office Sub Office Field Office 	<ul style="list-style-type: none"> UNHAS Connection Ad-Hoc Fixed-Wing Destination Ad-Hoc Rotary-Wing Destination 	<ul style="list-style-type: none"> Logistics Route UNHAS Route WFP Warehouse Refugee Camp 	<ul style="list-style-type: none"> IDPs Site Type IDP Camp IDP Collective Centre 	<ul style="list-style-type: none"> Number of IDPs by Location as of May 2017 (IOM) 10,001 - 16,320 5,001 - 10,000 1,001 - 5,000 5 - 1,000 	<ul style="list-style-type: none"> National Capital Major Town Intermediate Town Small Town 	<ul style="list-style-type: none"> International Boundary Region Boundary
---	---	---	---	--	---	---

Sources: WFP, UNGIWI, GAUL, GLCSC, UNHCR, IOM. UNHCR Nigeria Displacement Dashboard June 2016

The designations employed and the presentation of material in the map(s) do not imply the expression of any opinion on the part of WFP concerning the legal or constitutional status of any country, territory, city or sea, or concerning the delimitation of its frontiers or boundaries. © World Food Programme 2017

