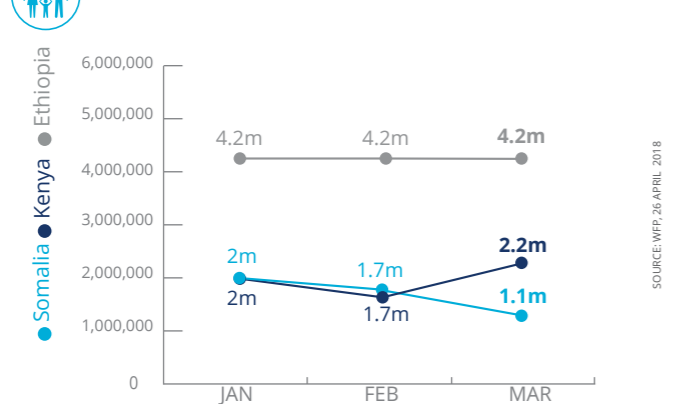


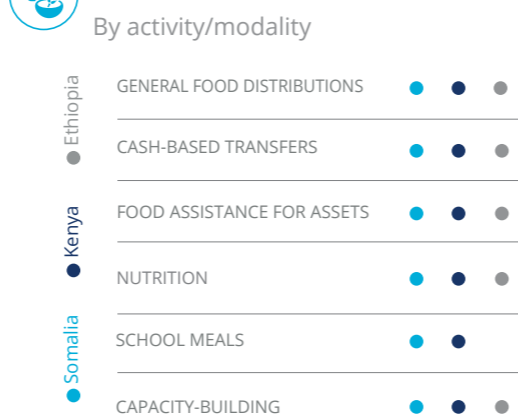
Horn of Africa

PEOPLE ASSISTED

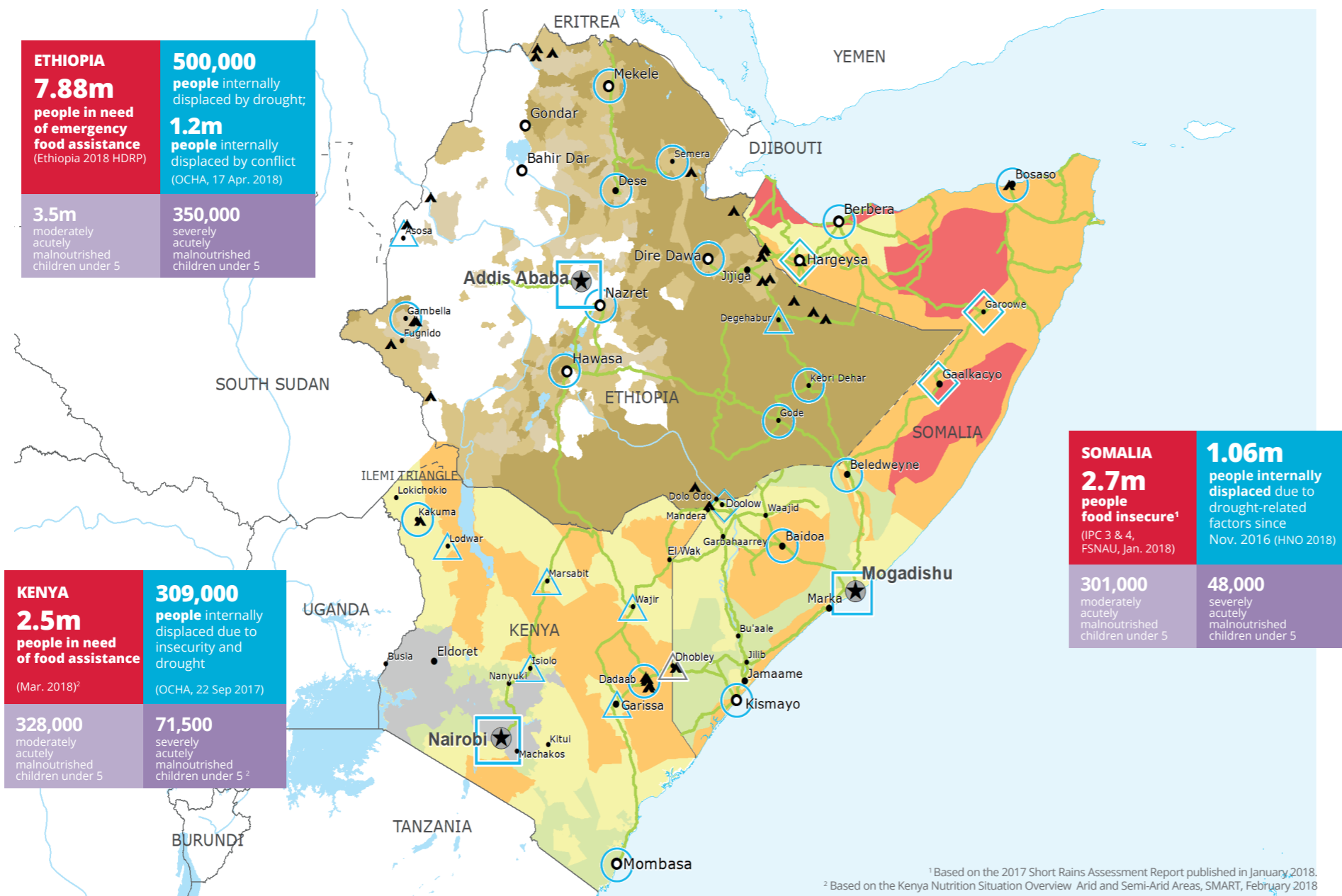
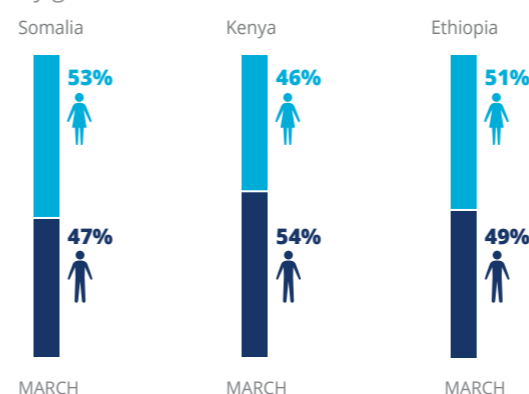


Ethiopia: Estimated figures for Relief, Productive Safety Net Programme and Nutrition operations as distributions are ongoing and/or reports are being consolidated. Excludes an estimated 500,000 children under 5 and Pregnant and Lactating Women receiving nutrition support that overlap with the emergency relief caseload in the Somali Region.

OPERATIONAL PROFILE



By gender



FUNDING

SOMALIA

Net funding requirement

US\$144m
May – October 2018

ETHIOPIA

Net funding requirement

US\$123m*
April – September 2018

KENYA

Net funding requirements

US\$26m
June – October 2018

Note: Includes all Protracted Relief & Recovery Operations, Country Programme and Special Operations for the drought response across Ethiopia, Kenya and Somalia.

*Includes WFP Relief, PSNP, Nutrition and Refugee requirements.

SOURCE: WFP, 26 APRIL 2018

2018 HUMANITARIAN RESPONSE PLANS AND CLUSTER REQUIREMENTS

SOMALIA Humanitarian Response Plan 2018

FOOD SECURITY US\$ **632m** **NUTRITION** US\$ **254m** **LOGISTICS** US\$ **10m** **OTHERS** US\$ **540m**



SOURCE: OCHA FTS, 28 APRIL 2018

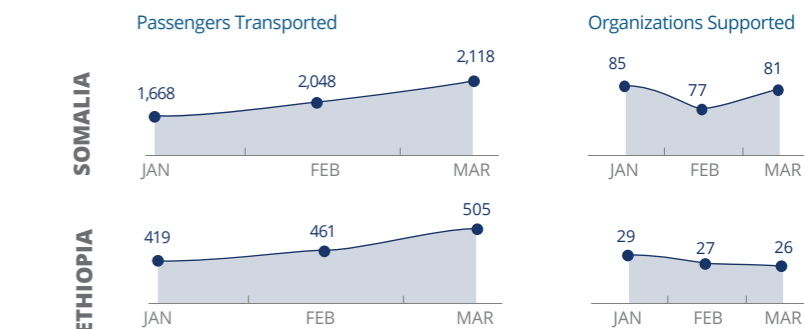
ETHIOPIA Humanitarian Requirements Document 2018

FOOD SECURITY US\$ **1,036m** **NUTRITION** US\$ **198m** **OTHERS** US\$ **424m**



SOURCE: OCHA, 26 APRIL 2018

UN Humanitarian Air Service (UNHAS)



SOURCES: WFP, 26 APRIL 2018

WFP LEVEL 2 EMERGENCY SINCE 06 FEBRUARY 2017

For more information, see the SITUATION REPORT and COUNTRY BRIEF www.wfp.org

<http://documents.wfp.org/stellent/groups/public/documents/ep/WFP284303.pdf>

Produced by the WFP Operations Centre (OPSCEN) jointly with Country Office and Regional Bureau Nairobi. This dashboard is based on best available information at the time of production. Future updates may vary as new information becomes available.

Hotspot Priority Woredas* (January 2018)

Priority 1
Priority 2
Priority 3

IPC Classification**

No data
Minimal (Phase 1)
Stressed (Phase 2)
Crisis (Phase 3)
Emergency (Phase 4)
Famine (Phase 5)

Country Office
Area Office
Sub Office
Field Office
Presence Office

Refugee Camp
Road Supply Route
International Boundary
Undetermined Boundary

National Capital
Major Town
Intermediate Town
Small Town

Sources: WFP, UNGIWI, GAUL, GLCSC, OCHA, UNHCR.

The designations employed and the presentation of material in the map(s) do not imply the expression of any opinion on the part of WFP concerning the legal or constitutional status of any country, territory, city or sea, or concerning the delimitation of its frontiers or boundaries. © World Food Programme 2018.

*The Hotspot Woredas only refer to Ethiopia

**For Somalia: Most likely scenario February - June 2018
For Kenya: February - April 2018