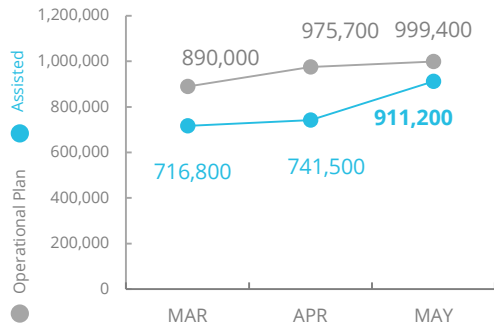


Nigeria

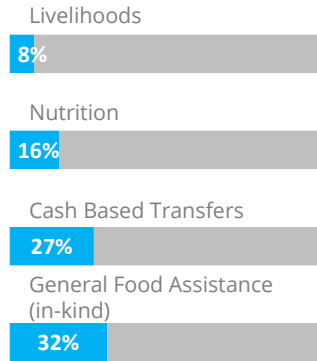


PEOPLE ASSISTED BY WFP



OPERATIONAL PROFILE

People reached (May)



SOURCE: WFP, 05 JULY 2020



COVID-19 Operational Impact

Assisted	Status	WFP Response
146,500	✓	Community-based activities: Ongoing
191,500	✓	Nutrition: Ongoing
291,300	✓	CBT: Ongoing
441,000	✓	Food Assistance: In-kind: double rations provided in North-East
n/a	✓	Technical support to the National Home-Grown School Feeding programme in Abuja and Lagos



FUNDING

Nigeria Country Strategic Plan

July - December 2020
Net funding requirements

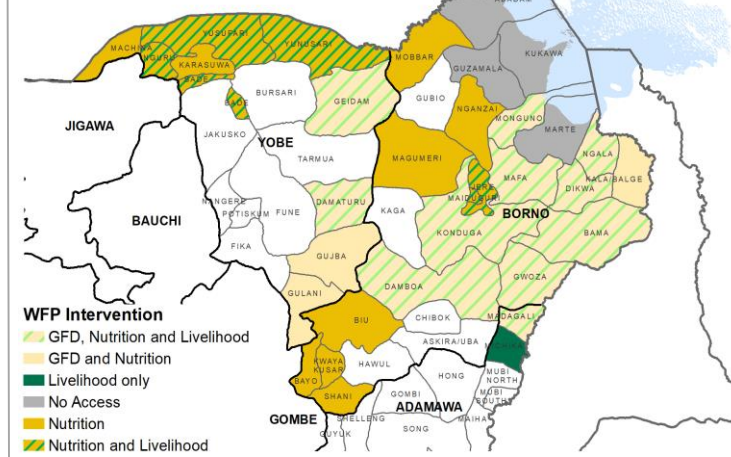
US\$176m

2020 LEVEL 3 RESPONSE (Entire Country Strategic Plan)
Requirements: USD 288.3m
Contributions: USD 216.1m



SOURCE: WFP, 10 JULY 2020

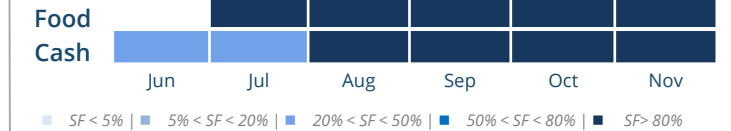
WFP OPERATIONAL PRESENCE



AVERAGE MONTHLY FUNDING REQUIREMENTS

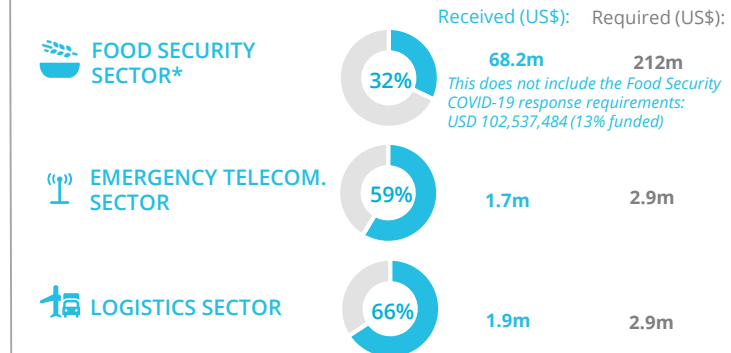
Food US\$ 18.3m Cash US\$ 18.1m

EXPECTED SHORTFALLS



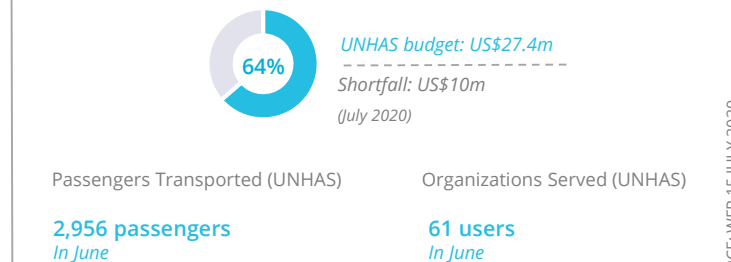
SOURCE: WFP, 08 JULY 2020

WFP-LED AND CO-LED SECTORS

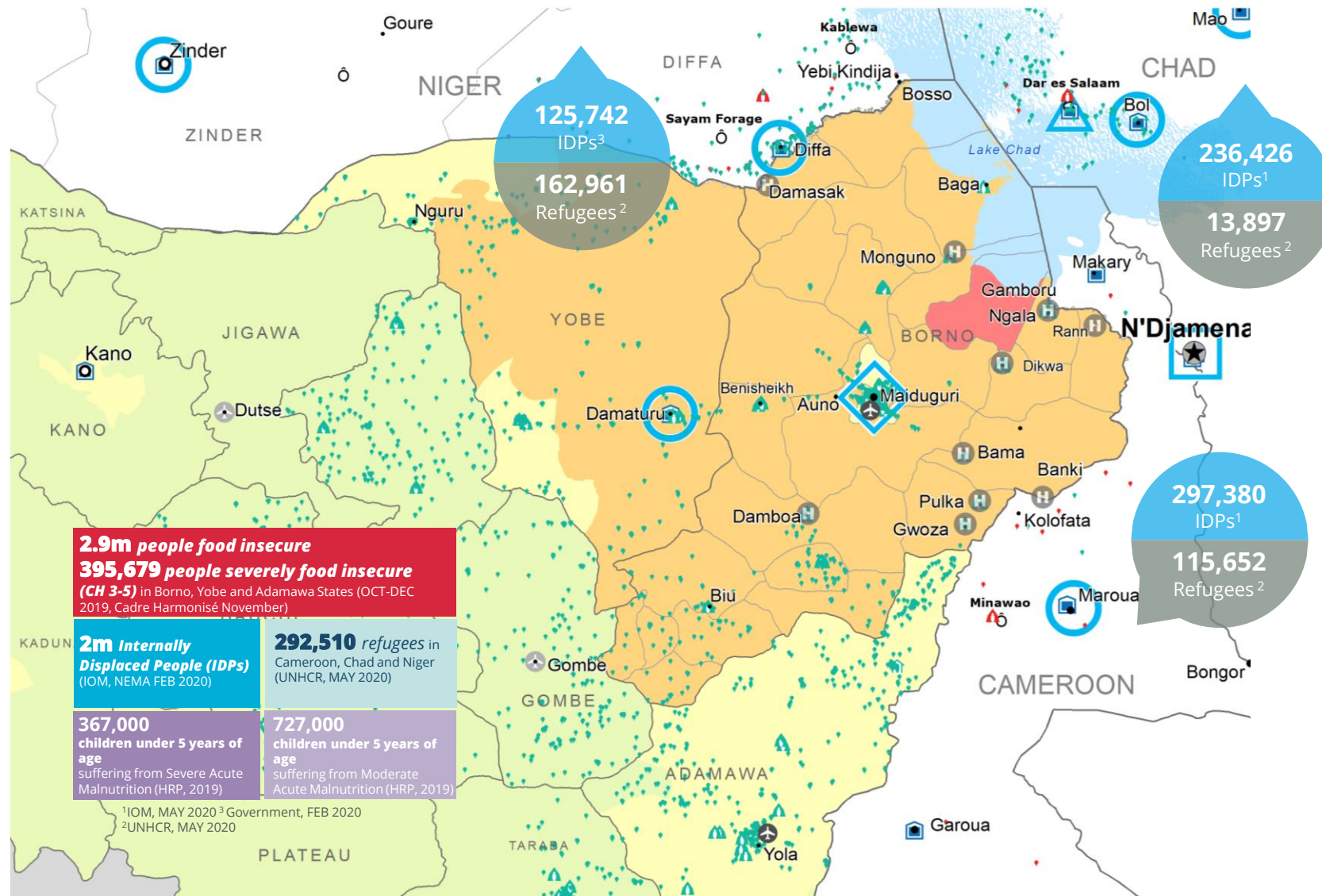


SOURCE: WFP, 15 JUN 2020; FTS, 07 JULY 2020

UN HUMANITARIAN AIR SERVICE (UNHAS)

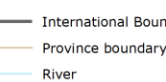
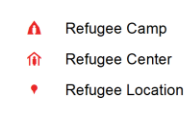
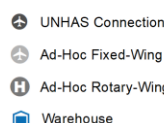


SOURCE: WFP, 15 JULY 2020



CH Food Security Classification

March - May 2020



Sources: WFP, UNGIWG, GAUL, GLCSC, OCHA, UNHCR.

The designations employed and the presentation of material in the map(s) do not imply the expression of any opinion on the part of WFP the delimitation of its frontiers or boundaries.
© World Food Programme 2020.

WFP LEVEL 3 EMERGENCY
SINCE 11 AUGUST 2016



SITUATION REPORT and COUNTRY BRIEF