



World Food Programme

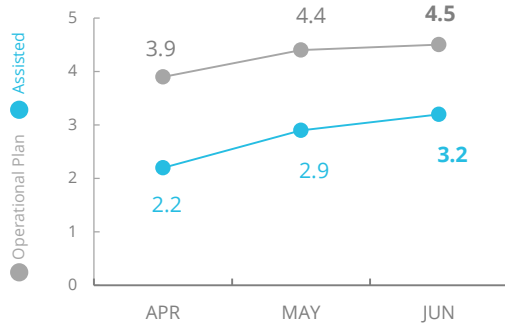
Emergency Dashboard | July 2019

South Sudan



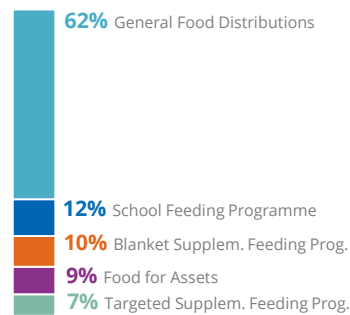
PEOPLE ASSISTED

South Sudan Interim Country Strategic Plan (ICSP)

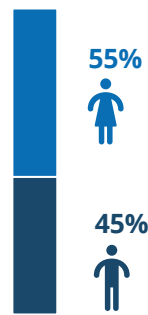


OPERATIONAL PROFILE

By Activity



By Gender



SOURCE: WFP, 31 JUL 2019



FUNDING

South Sudan Interim Country Strategic Plan (ICSP)

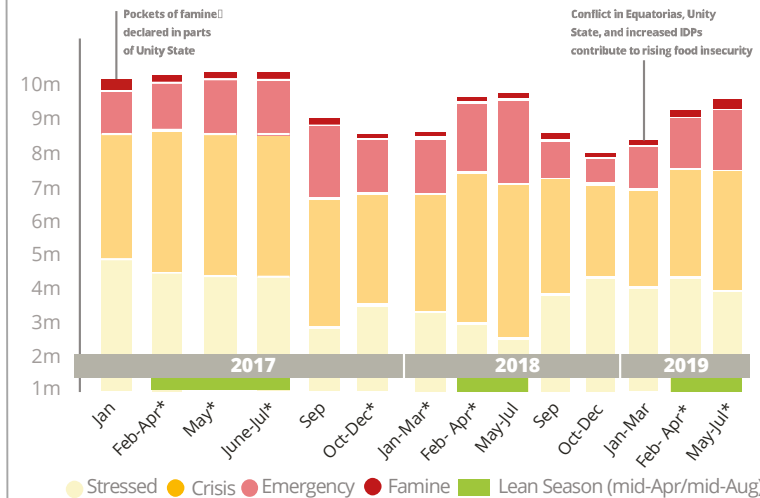
August 2019 - January 2020
Net funding requirements

US\$481.5m

2019 LEVEL 3 RESPONSE REQUIREMENTS: US\$959.9m

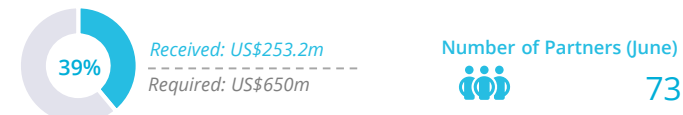
SOURCE: WFP, 02 AUG 2019

HISTORICAL FOOD INSECURITY (IPC)

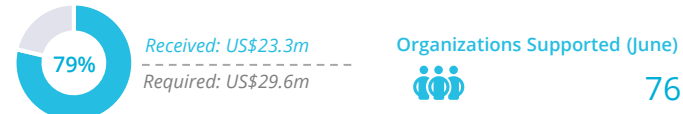


WFP-LED AND SUPPORTED CLUSTERS

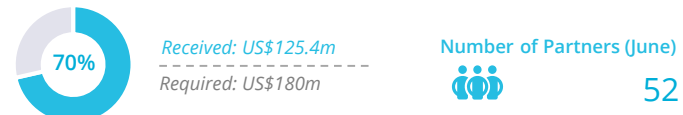
FOOD SECURITY AND LIVELIHOODS CLUSTER



LOGISTICS SECTOR

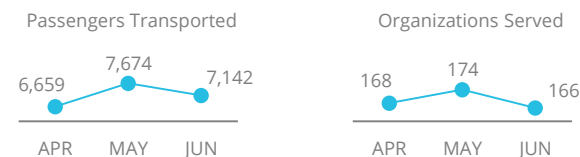


NUTRITION CLUSTER



SOURCE: WFP, 31 JUL 2019

UN HUMANITARIAN AIR SERVICES (UNHAS)



SOURCE: WFP, 31 JUL 2019

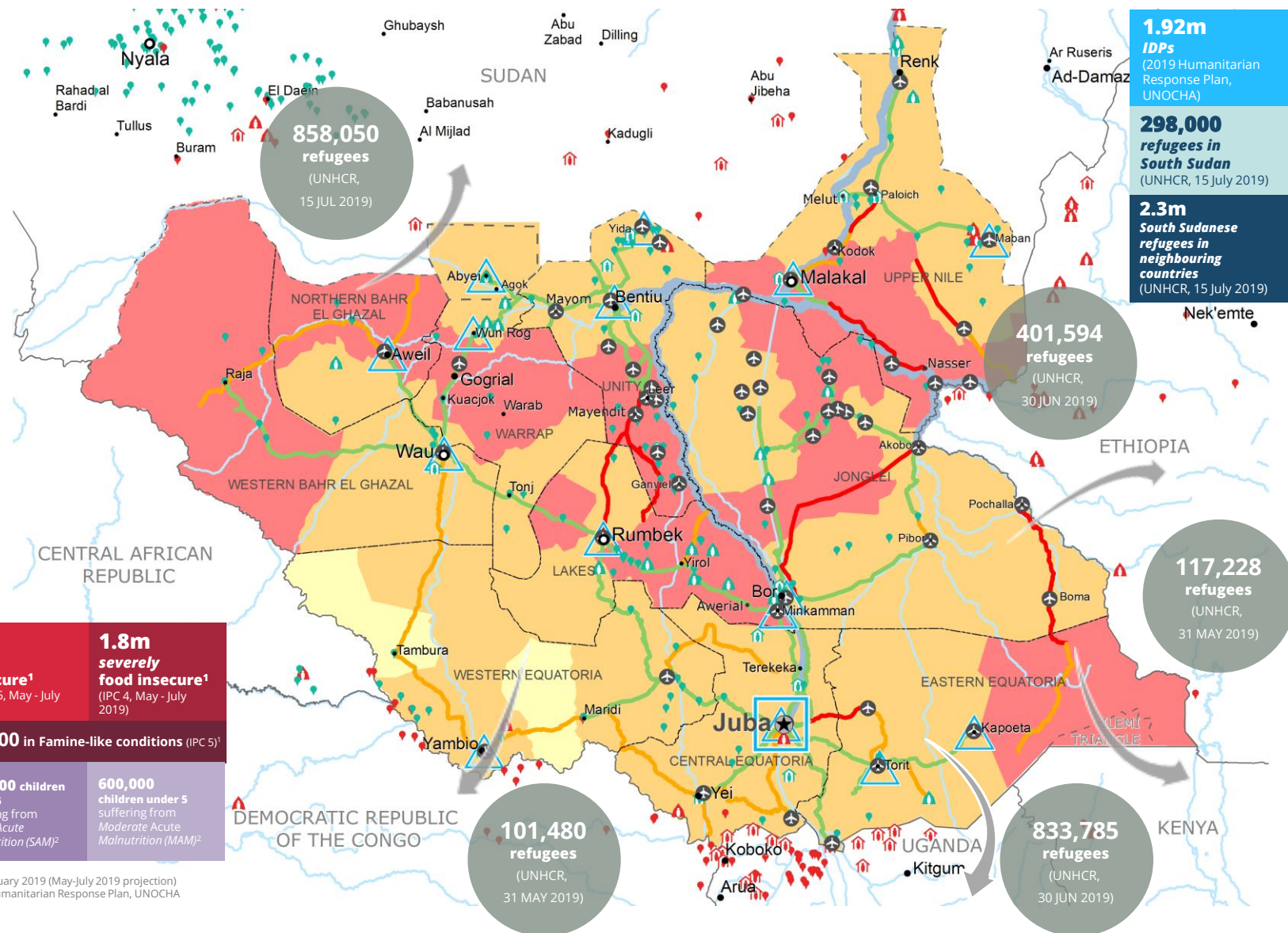
WFP LEVEL 3 EMERGENCY

SINCE 23 December 2013
IASC LEVEL 3 EMERGENCY SINCE 1 JULY 2015

For more information, see the SITUATION REPORT and COUNTRY BRIEF
www.wfp.org/countries/south-sudan

South Sudan Interim Country Strategic Plan
<http://documents.wfp.org/stellent/groups/public/documents/ep/WFP284303.pdf>

Produced by the WFP Operations Centre (OPSCEN) jointly with Country Office and Regional Bureau Nairobi. This dashboard is based on best available information at the time of production. Future updates may vary as new information becomes available.



¹ IPC, January 2019 (May-July 2019 projection)
² 2019 Humanitarian Response Plan, UNOCHA

- Country Office
- Sub Office
- Field Office
- Road Closed
- Road Open
- Road with restricted access
- UNHAS Connection
- IDP Camp
- IDP Center
- IDP Location
- Refugee Camp
- Refugee Center
- Refugee Location
- National Capital
- Major Town
- Intermediate Town
- Small town
- International Boundary
- Province boundary
- River

Sources: WFP, UNGIWG, GAUL, GLSCS, OCHA, UNHCR. Access Constraints Map, March 2019. The designations employed and the presentation of material in the map(s) do not imply the expression of any opinion on the part of WFP concerning the legal or constitutional status of any country, territory, city or sea, or concerning the delimitation of its frontiers or boundaries. © World Food Programme 2019.

SAVING LIVES
CHANGING LIVES