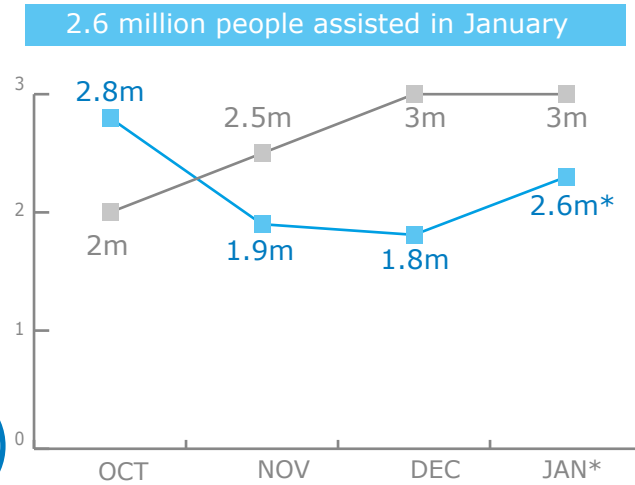


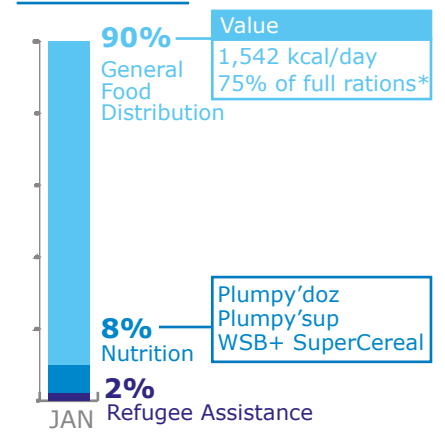
BENEFICIARIES

Emergency Operation 200890

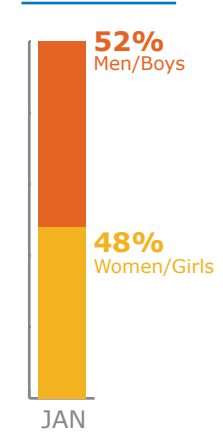


*Due to pipeline shortfalls, WFP needs to reduce rations to 75% between January and March.

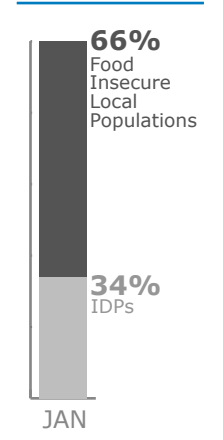
BY ACTIVITY



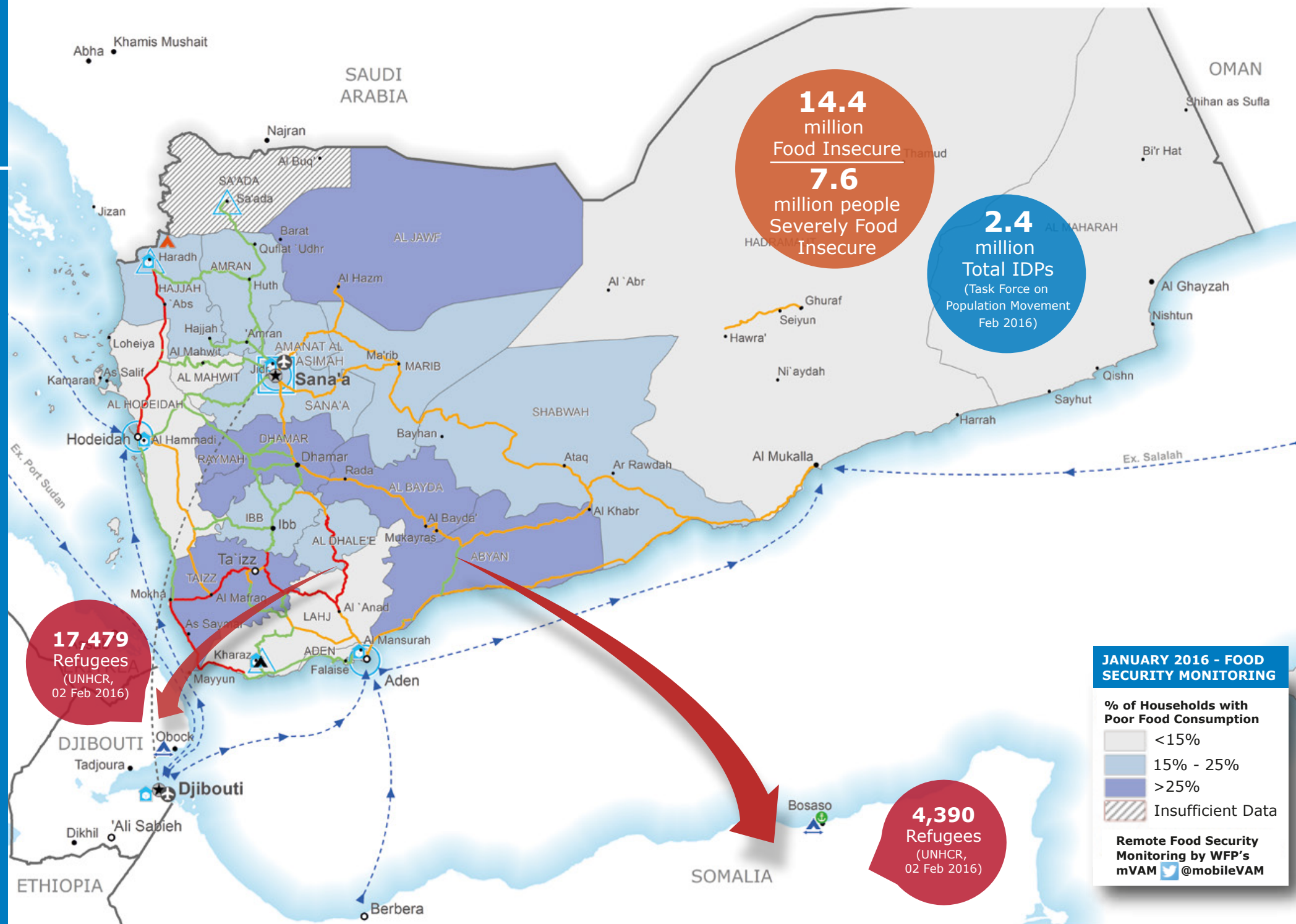
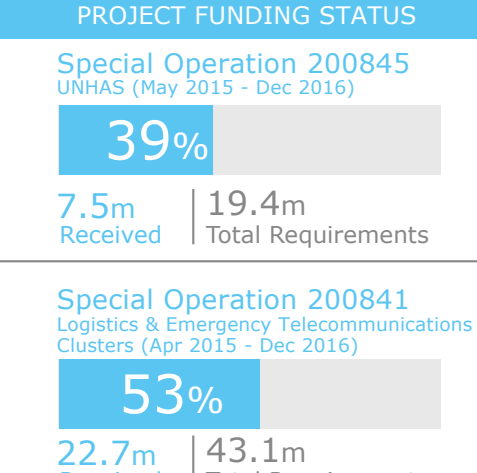
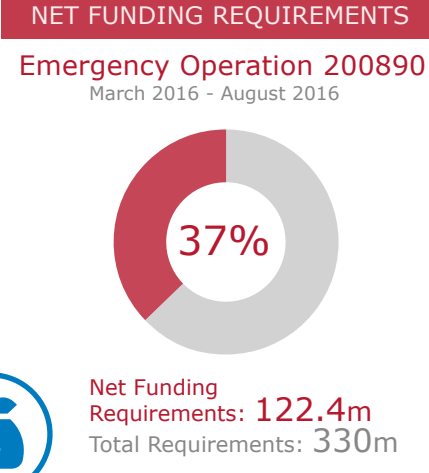
BY GENDER



BY CATEGORY



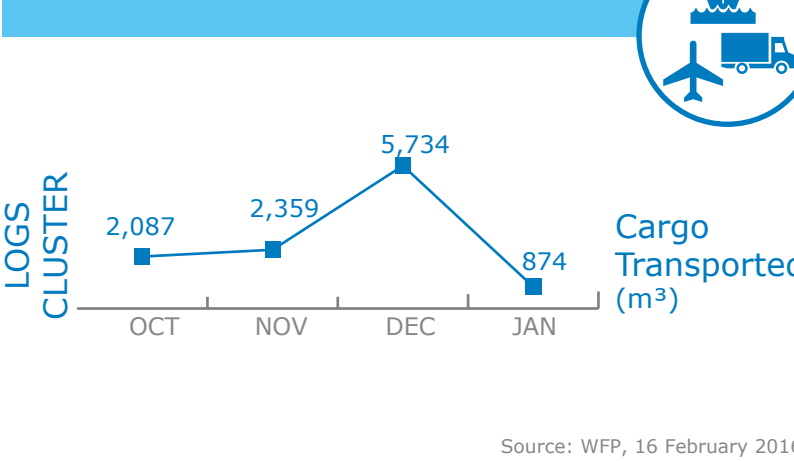
FUNDING



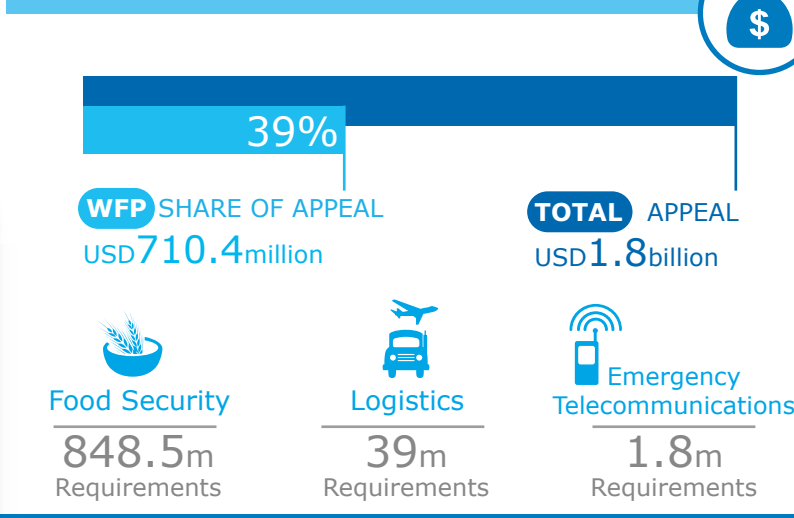
OPERATIONAL CHALLENGES



COMMON SERVICES



2016 YEMEN HUMANITARIAN RESPONSE PLAN REQUIREMENTS



WFP LEVEL 3 EMERGENCY

SINCE 03 JULY 2015
IASC LEVEL 3 (SINCE 01 JULY 2015)

Check the **COUNTRY BRIEF** <https://www.wfp.org/countries/yemen>

Produced by the WFP Operations Centre (OPSCEN)
This dashboard is based on best available information at the time of production. Future updates may vary as new information becomes available.

- Country Office
- Warehouse
- UNHAS Connection
- Road Open
- National Capital
- International Boundary
- Sub Office
- IDP Camp
- UNHAS Connection
- Road With Restricted Access
- Major Town
- Governorate Boundary
- Field Office
- Refugee Camp
- Port Operational
- Closed Road
- Intermediate Town
- Small Town
- Transit Camp
- Port with Restricted Access
- Supply Road Open

Sources: WFP, UNGIWG, GAUL, GLCSC, OCHA, UNHCR, mVAM
The designations employed and the presentation of material in the map(s) do not imply the expression of any opinion on the part of WFP concerning the legal or constitutional status of any country, territory, city or sea, or concerning the delimitation of its frontiers or boundaries. © World Food Programme 2016



Source: WFP, 01 March 2016
Source: OCHA FTS, 18 February 2016