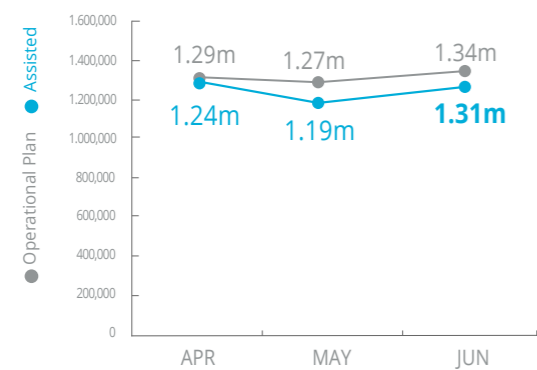


# Nigeria

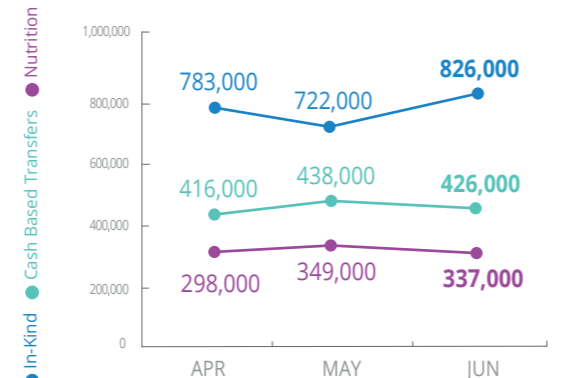
## PEOPLE ASSISTED

Regional Emergency Operation 200777



## OPERATIONAL PROFILE

by Activity



Note: Figures should not be added to avoid double-counting

## FUNDING

Nigeria component of Regional Emergency Operation 200777

Aug 2018 – Jan 2019  
Net funding requirement **USD55.3m**

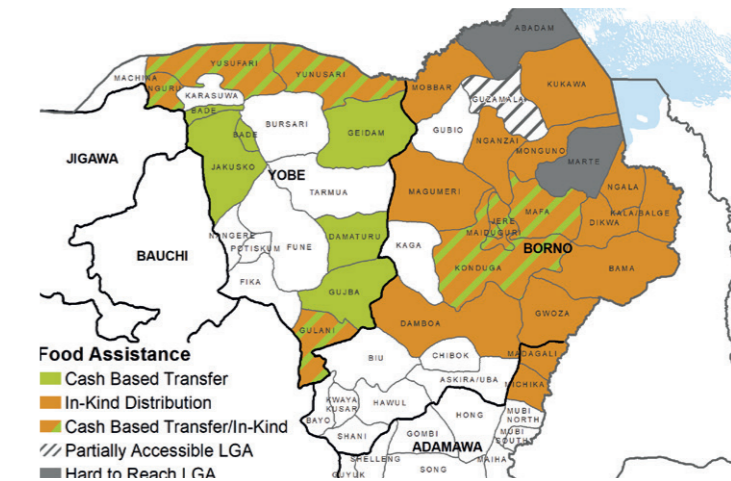
**2018 LEVEL 3 RESPONSE**  
39% Received: US\$125.3m  
Requirement: US\$318.7m

**Regional Special Operation 200834**  
UN Humanitarian Air Services (UNHAS) Nigeria  
53% Received: US\$14.3m  
2018 Requirement: US\$27m

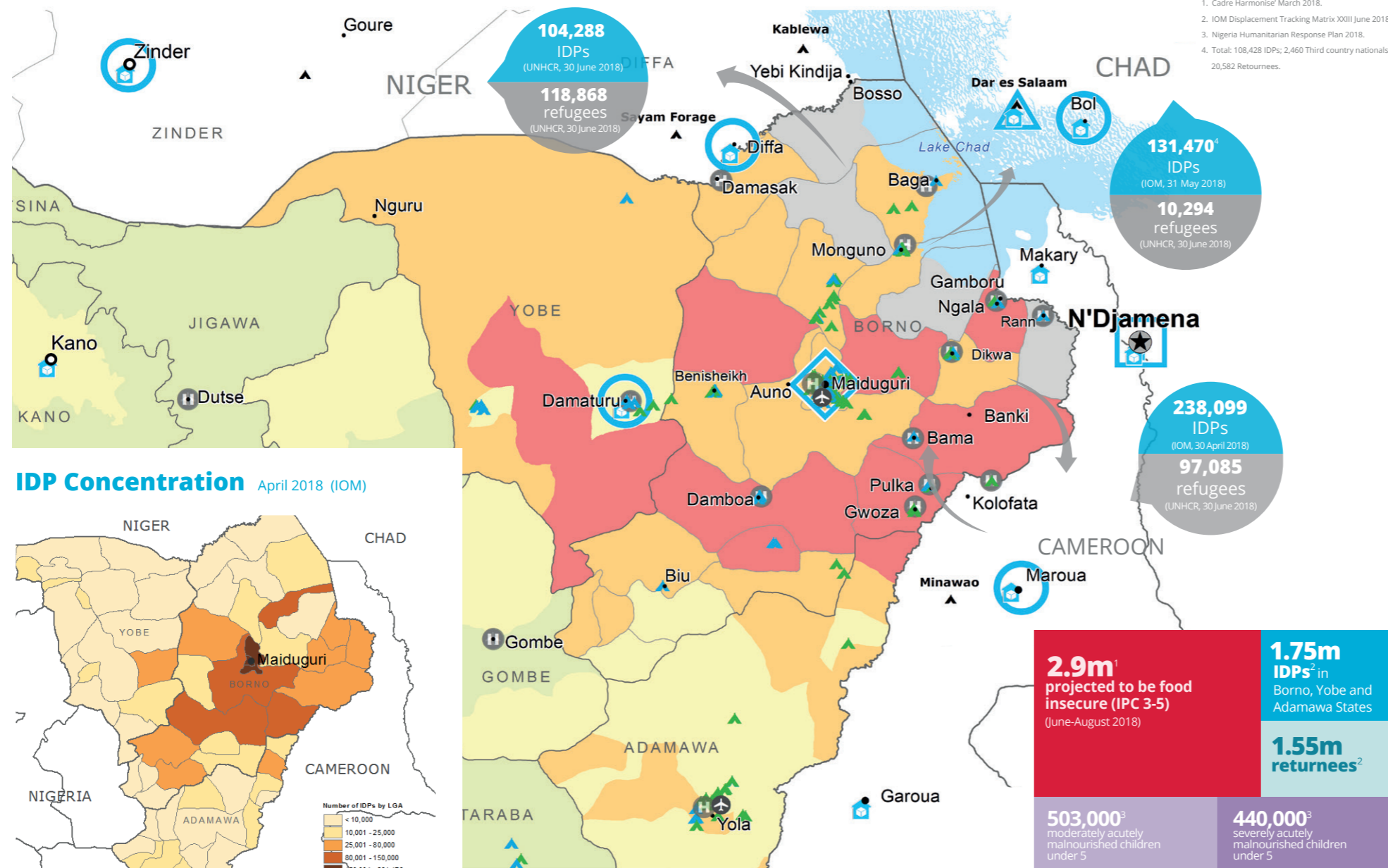
**Special Operation 201032**  
Logistics and Emergency Telecommunications Sectors  
15% Received: US\$1.6m  
2018 Requirement: US\$10.6m

SOURCE: WFP, 19 JULY 2018

## WFP OPERATIONAL PRESENCE AND FOOD ASSISTANCE MODALITIES



Source: WFP, 10 MAY 2018

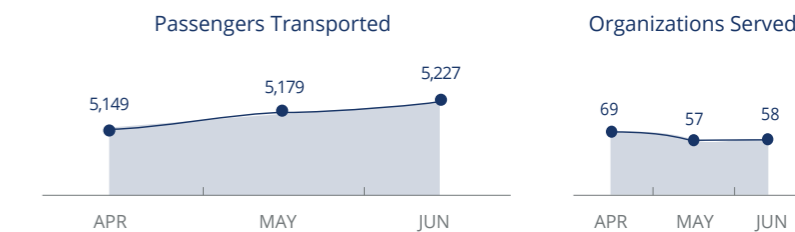


1. Cadre Harmonise<sup>1</sup> March 2018.  
2. IOM Displacement Tracking Matrix XXIII June 2018.  
3. Nigeria Humanitarian Response Plan 2018.  
4. Total: 108,428 IDPs; 2,460 Third country nationals; 20,582 Returnees.

## WFP LED & SUPPORTED SECTORS



## UN Humanitarian Air Service (UNHAS)



Sources: OCHA FTS, 20 July 2018; Clusters 20 July 2018

**WFP LEVEL 3 EMERGENCY**  
SINCE 11 AUGUST 2016

For more information, see the SITUATION REPORT and COUNTRY BRIEF  
[www.wfp.org/countries/nigeria](http://www.wfp.org/countries/nigeria)

**2A Regional Emergency Operation 200777**  
<http://documents.wfp.org/stellent/groups/public/documents/ep/WFP284303.pdf>

Produced by the WFP Operations Centre (OPSCEN) jointly with Country Office and Regional Bureau Dakar. This dashboard is based on best available information at the time of production. Future updates may vary as new information becomes available.

- CH Classification** (projected June-August 2018)
- No data
  - Minimal (Phase 1)
  - Stressed (Phase 2)
  - Crisis (Phase 3)
  - Emergency (Phase 4)
  - Famine (Phase 5)
- Operational Presence**
- Country Office
  - Area Office
  - Sub Office
  - Field Office
  - Warehouse
- Facilities**
- Refugee Camp
  - IDP Camp
  - IDP Collective Center
  - UNHAS Connection
  - Ad-Hoc Rotary-Wing Destination
- Geography**
- National Capital
  - Major Town
  - Intermediate Town
  - International Boundary
  - Region Boundary

Sources: WFP, UNGIWG, GAUL, GLCSC, OCHA, UNHCR.

The designations employed and the presentation of material in the map(s) do not imply the expression of any opinion on the part of WFP concerning the legal or constitutional status of any country, territory, city or sea, or concerning the delimitation of its frontiers or boundaries.  
© World Food Programme 2018.