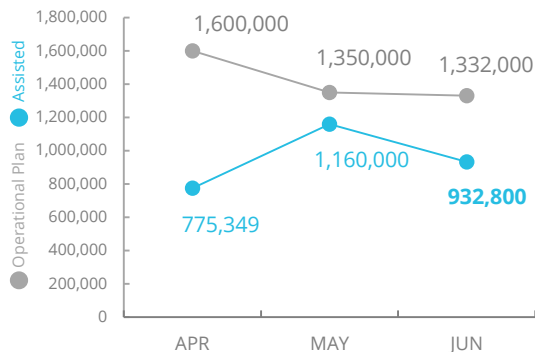


Democratic Republic of Congo

PEOPLE ASSISTED

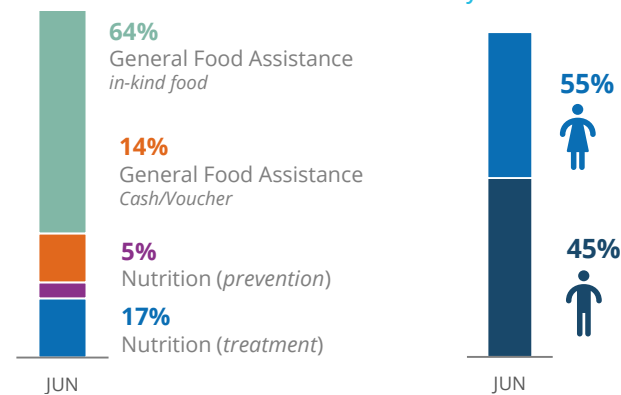
DR Congo Interim Country Strategic Plan (ICSP)
(Activities covered by WFP L3 Emergency Response)



SOURCE: WFP, 25 JUL 2019

*estimates

OPERATIONAL PROFILE



FUNDING

DR Congo Interim Country Strategic Plan (ICSP)

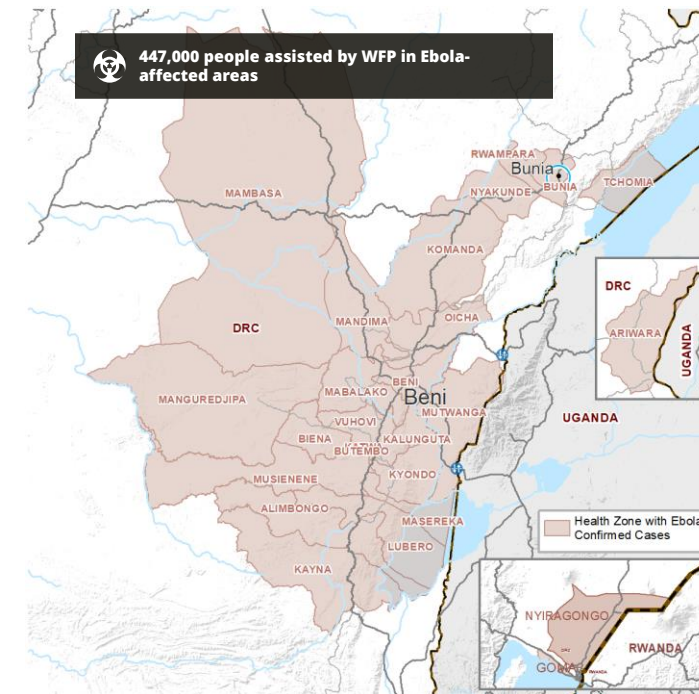
August 2019- January 2020
Net funding requirements

us\$162.1m

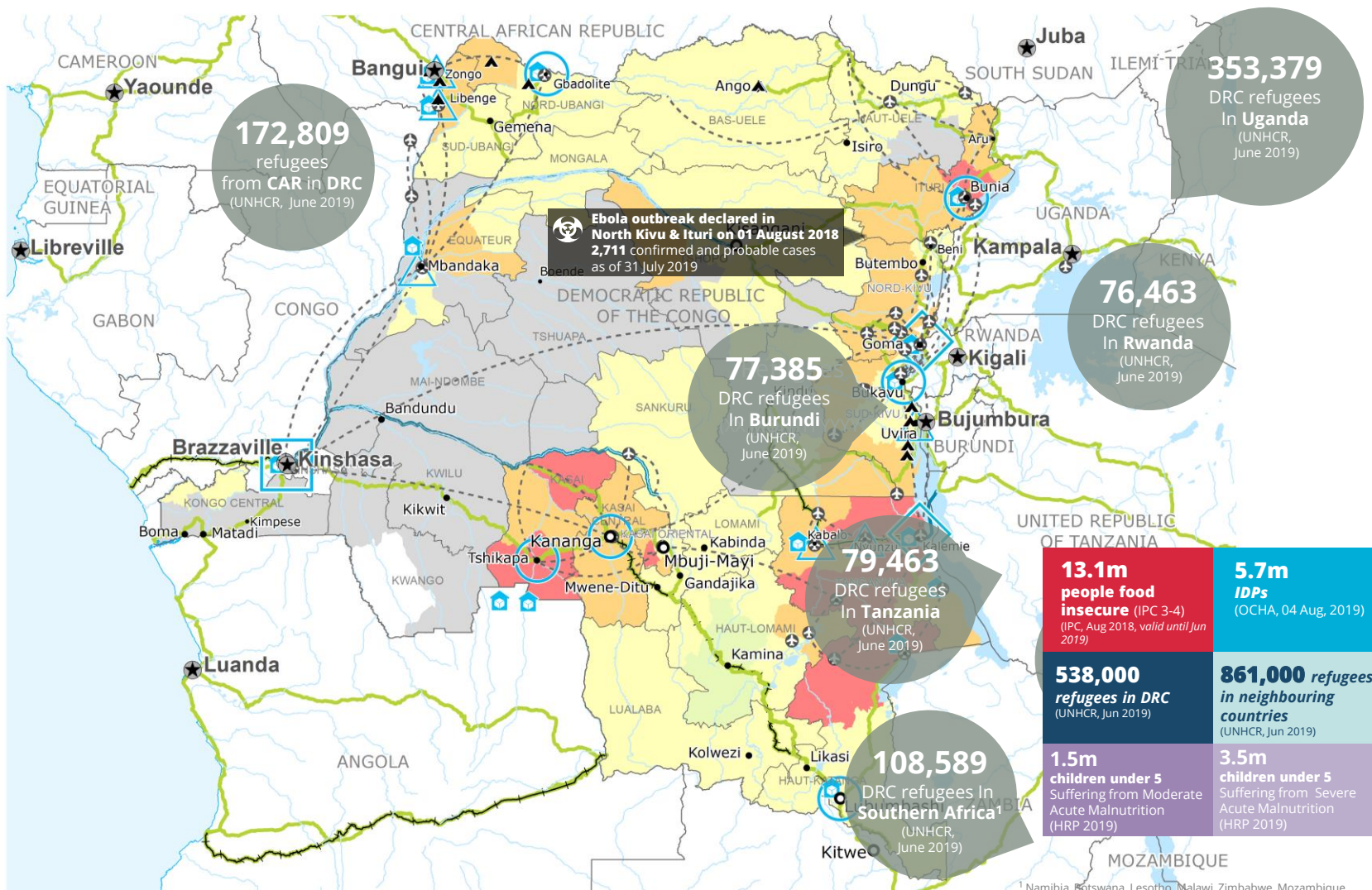
2019 LEVEL 3 RESPONSE REQUIREMENTS: US\$452.8m

SOURCE: WFP, 02 AUG 2019

EBOLA AFFECTED HEALTH ZONES



SOURCE: MOH, 31 JUL 2019

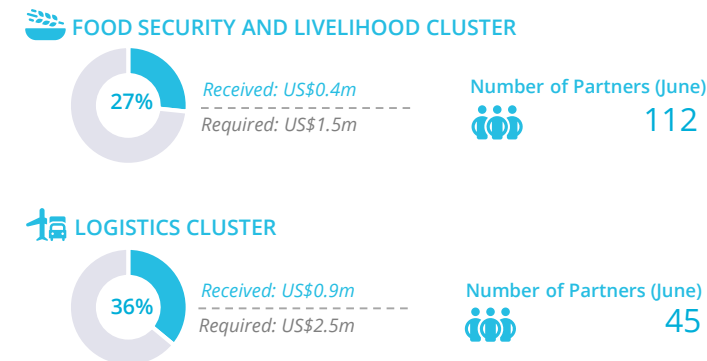


¹ Namibia, Botswana, Lesotho, Malawi, Zimbabwe, Mozambique, Madagascar, RSA and the Kingdom of Eswatini (UNHCR, 31 Jan. 2019)

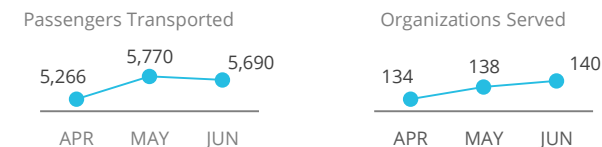
Sources: WFP, UNGIWG, GAUL, GLCSC, OCHA, UNHCR, IPC.

The designations employed and the presentation of material in the map(s) do not imply the expression of any opinion on the part of WFP concerning the legal or constitutional status of any country, territory, city or sea, or concerning the delimitation of its frontiers or boundaries. © World Food Programme 2019.

WFP-LED AND SUPPORTED CLUSTERS



UN HUMANITARIAN AIR SERVICES (UNHAS)



SOURCE: WFP, 25 JUL 2019

WFP LEVEL 3 EMERGENCY

SINCE 06 OCTOBER 2017
(LEVEL 2 EMERGENCY SINCE 12 DECEMBER 2013)

For more information, see the [SITUATION REPORT](#) and [COUNTRY BRIEF](#)
www.wfp.org/countries/congo-democratic-republic

DR Congo Interim Country Strategic Plan
https://documents.wfp.org/stellent/groups/public/documents/eb/wfp293190.pdf_ga=2.236369666.2010349590.1564781252.134077222.1558363545

Produced by the WFP Operations Centre (OPSCEN) jointly with Country Office and Regional Bureau Johannesburg. This dashboard is based on best available information at the time of production. Future updates may vary as new information becomes available.

- Country Office
- △ Field Office
- Road Supply Route
- ★ National Capital
- International Boundary
- ◇ Area Office
- 🏠 Warehouse
- Railway Supply Route
- Major Town
- Province boundary
- Sub Office
- ▲ Refugee Camp
- Water Supply Route
- Intermediate Town
- River
- Small town
- Surface Waterbody