



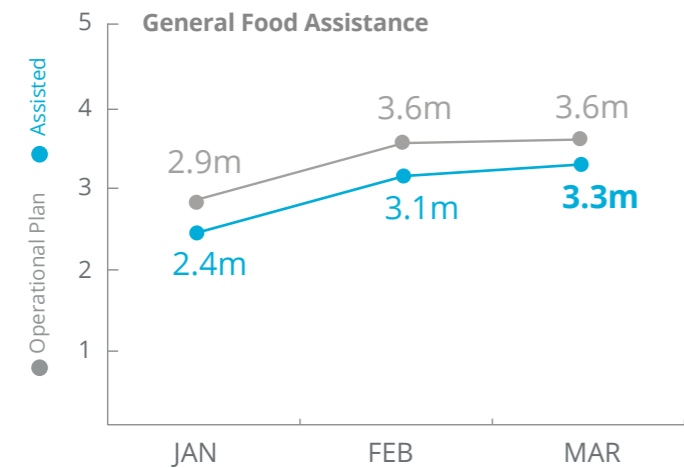
World Food Programme

# Syria



## PEOPLE ASSISTED

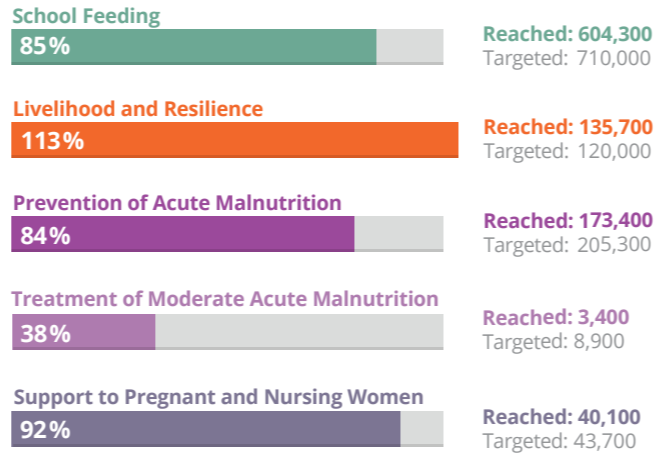
Syria Interim Country Strategic Plan (ICSP)



SOURCE: WFP, 25 APRIL 2019

## OTHER ACTIVITIES

March 2019



## FUNDING

Syria Interim Country-Strategic Plan (ICSP)

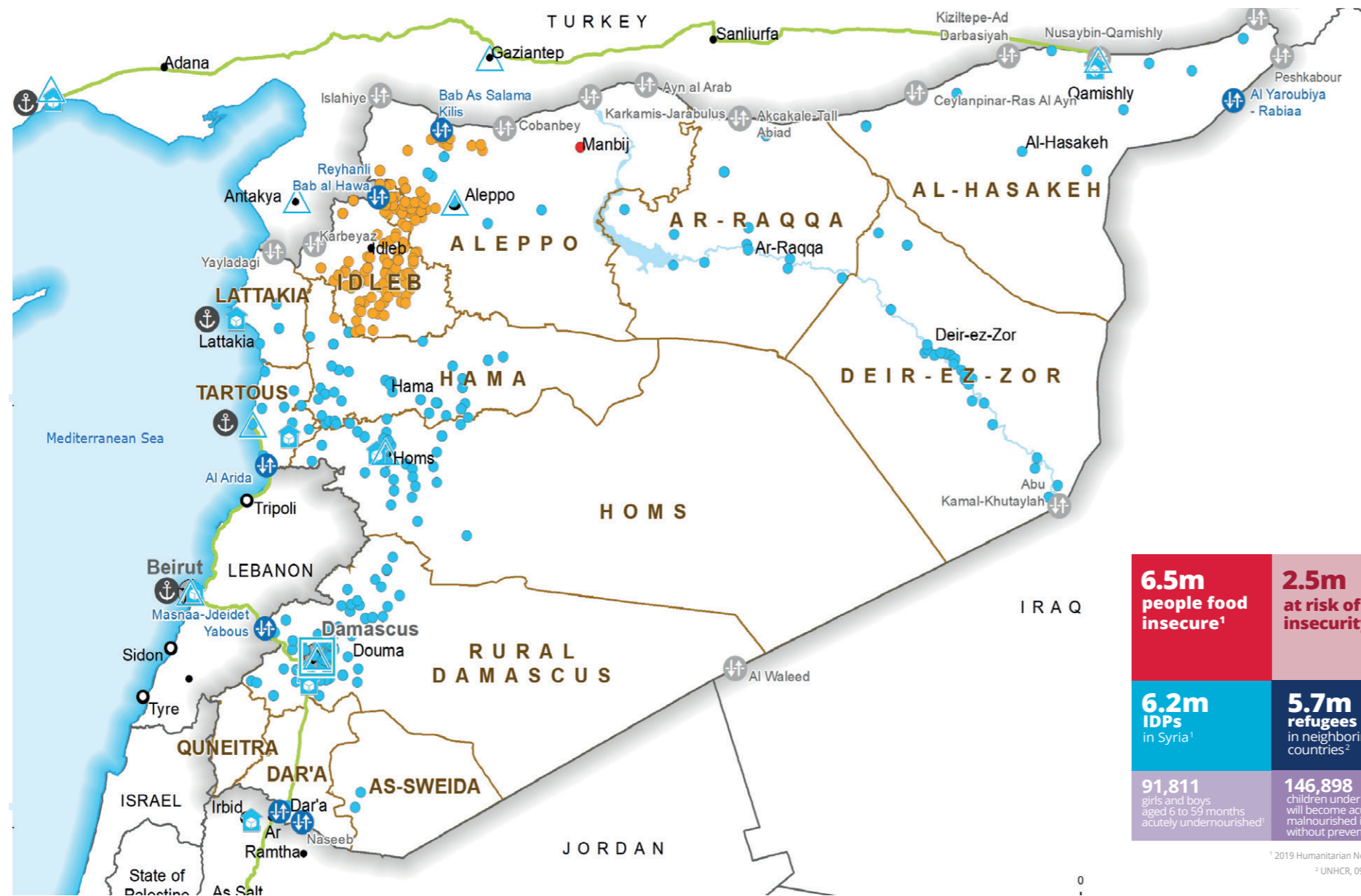
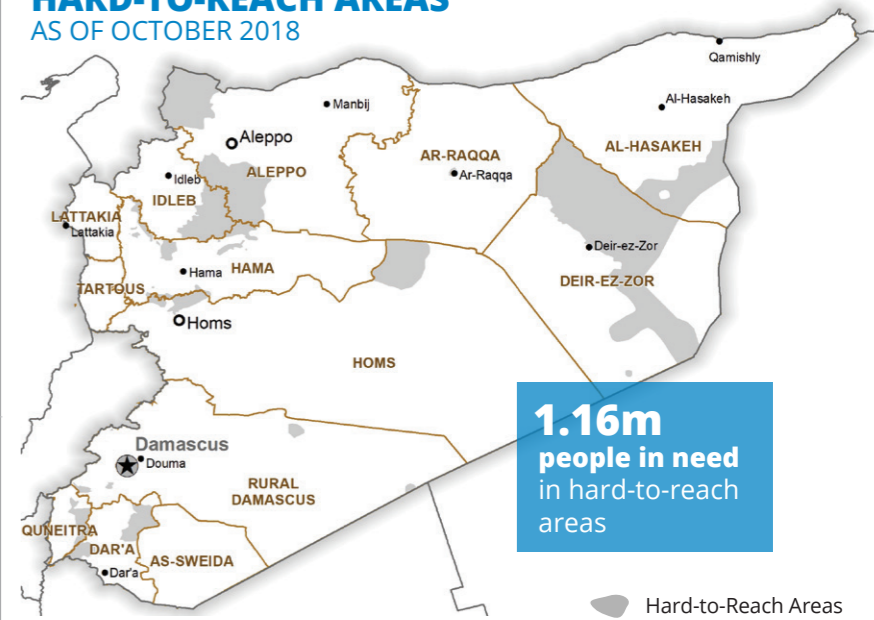
May - October 2019

# Net funding requirement US\$178.6m

2019 LEVEL 3 RESPONSE REQUIREMENTS: US\$737.8m

SOURCE: WFP, 26 APRIL 2019

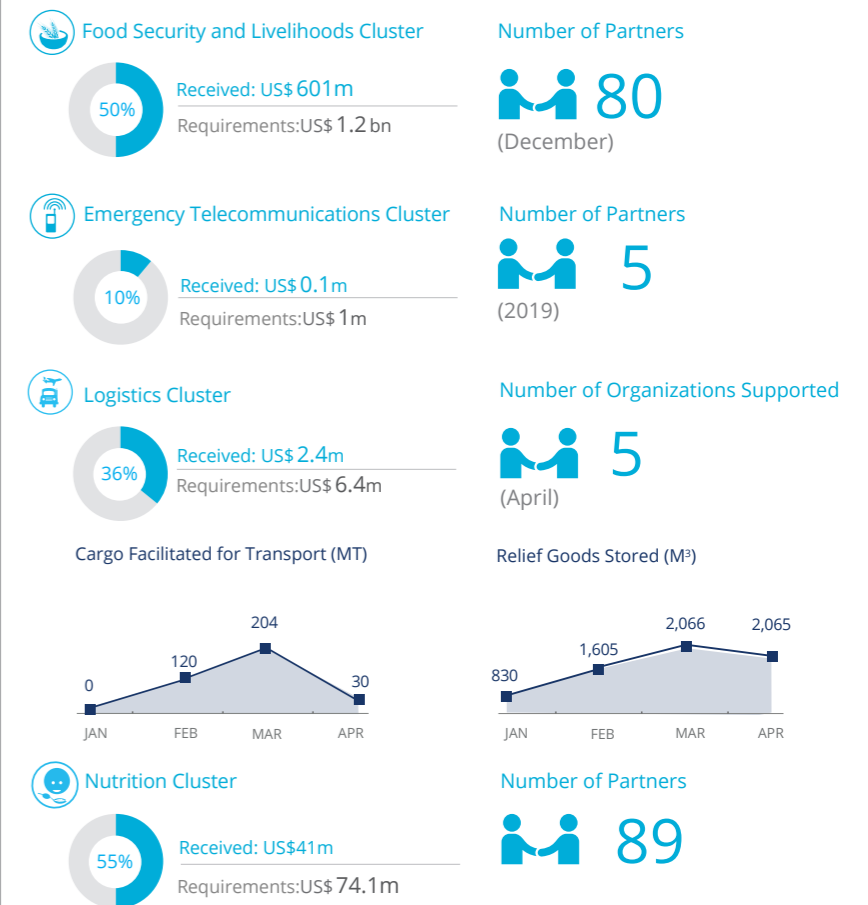
## HARD-TO-REACH AREAS AS OF OCTOBER 2018



<b>6.5m</b> people food insecure <sup>1</sup>	<b>2.5m</b> at risk of food insecurity <sup>1</sup>
<b>6.2m</b> IDPs in Syria <sup>1</sup>	<b>5.7m</b> refugees in neighboring countries <sup>2</sup>
<b>91,811</b> girls and boys aged 6 to 59 months acutely undernourished <sup>1</sup>	<b>146,898</b> children under 5 will become acutely malnourished in 2019 without prevention <sup>1</sup>

<sup>1</sup> 2019 Humanitarian Needs Overview  
<sup>2</sup> UNHCR, 09 April 2019

## WFP-LED AND SUPPORTED CLUSTERS



SOURCES: OCHA FTS, 26 APRIL 2019; CLUSTERS, 26 APRIL 2019

## WFP LEVEL 3 EMERGENCY SINCE 14 DECEMBER 2012

IASC LEVEL 3 EMERGENCY SINCE 15 JANUARY 2013

For more information, see the SITUATION REPORT and COUNTRY BRIEF [www.wfp.org/countries/syria](http://www.wfp.org/countries/syria)

**Syria Interim Country Strategic Plan**  
[www1.wfp.org/operations/sy02-syrian-arab-republic-interim-country-strategic-plan-2019-2020](http://www1.wfp.org/operations/sy02-syrian-arab-republic-interim-country-strategic-plan-2019-2020)

Produced by the WFP Operations Centre (OPSCEN) jointly with Country Office and Regional Bureau Cairo. This dashboard is based on best available information at the time of production. Future updates may vary as new information becomes available.

- |                                       |                               |                  |   |                     |                          |
|---------------------------------------|-------------------------------|------------------|---|---------------------|--------------------------|
| <b>Food Distribution Points (FDP)</b> | ● FDP Regular Deliveries      | □ Country Office | — Road Supply Route                       | ★ National Capital  | — International Boundary |
|                                       | ● FDP Cross-line Deliveries   | ○ Sub Office     | ⚡ Open Border Crossing Point              | ○ Major Town        | — Governor Boundary      |
|                                       | ● FDP Cross-border Deliveries | △ Field Office   | ⚡ Sporadically Open Border Crossing Point | ● Intermediate Town | — River                  |
|                                       |                               | 🏠 Warehouse      | ⚓ Port                                    |                     | — Surface Waterbody      |

Sources: OCHA, WFP, GLCS, UNGIWG, UNHCR, Geonames.

The designations employed and the presentation of material in the map(s) do not imply the expression of any opinion on the part of WFP concerning the legal or constitutional status of any country, territory, city or sea, or concerning the delimitation of its frontiers or boundaries. © World Food Programme 2019.